

It's St. Patty's Day!

Hunt Chrysler Jeep

ALL NEW 2007 DODGE CALIBER SXT

- 158 hp 2.0L DOHC WT 4 cylinder
- Continuously Variable Automatic Transmission
- AM/FM/CD stereo with 4 speakers
- Illuminated Cupholders • Side-curtain airbags

PURCHASE FOR
\$18,895*

OR LEASE FOR **\$350** ‡ PER MONTHS FOR 39 MONTHS
LEASE APR **4.8%**



\$0 Down Payment!

2006 DODGE GR. CARAVAN "Canadian Edition"



OTHER 39 MONTH LEASES OFFERED

MONTHLY	DOWN PAYMENT
\$337†	\$1,000
\$285†	\$3,000
\$246†	\$4,495

OR LEASE FOR **\$353** † PER MONTHS FOR 39 MONTHS WITH \$399 DOWN PAYMENT

LEASE APR **0.8%**

- **STOW 'N' GO** The only minivan with available two rows of seats that fold flat into the floor • Quad seats • Keyless entry • Anti-lock braking system
- Roof rack • 6" Extended wheelbase with 23.3 cu.ft. additional cargo capacity
- Fuel Consumption • City: 12.9L/100 km (22 mpg)Δ • Hwy: 8.5L/100 kms (33 mpg)Δ

The Dodge Grand Caravan offers the Stow 'n' Go™ Seating and Storage system, an innovation in convenience that's redefining the category. It also carries a price that is an innovation in thrift

★★★★★ NHTSA 5 STAR Front & side impact crash test rating

0% Purchase Financing
∞ For 36 months on ALL 2006 Dodge Caravan Models!

ONLY 2 WEEKS LEFT TO DEAL!
THE CHRYSLER GROUP IS ON A ROLL....SALE ENDS MARCH 31ST



OTHER 27 MONTH LEASES OFFERED

MONTHLY	DOWN PAYMENT
\$276††	\$1,000
\$200††	\$3,000
\$143††	\$4,495

Or Step Up To A Caravan Canadian Edition For **\$5** PER MONTHS FOR 27 MONTHS WITH \$0 SECURITY DEPOSIT

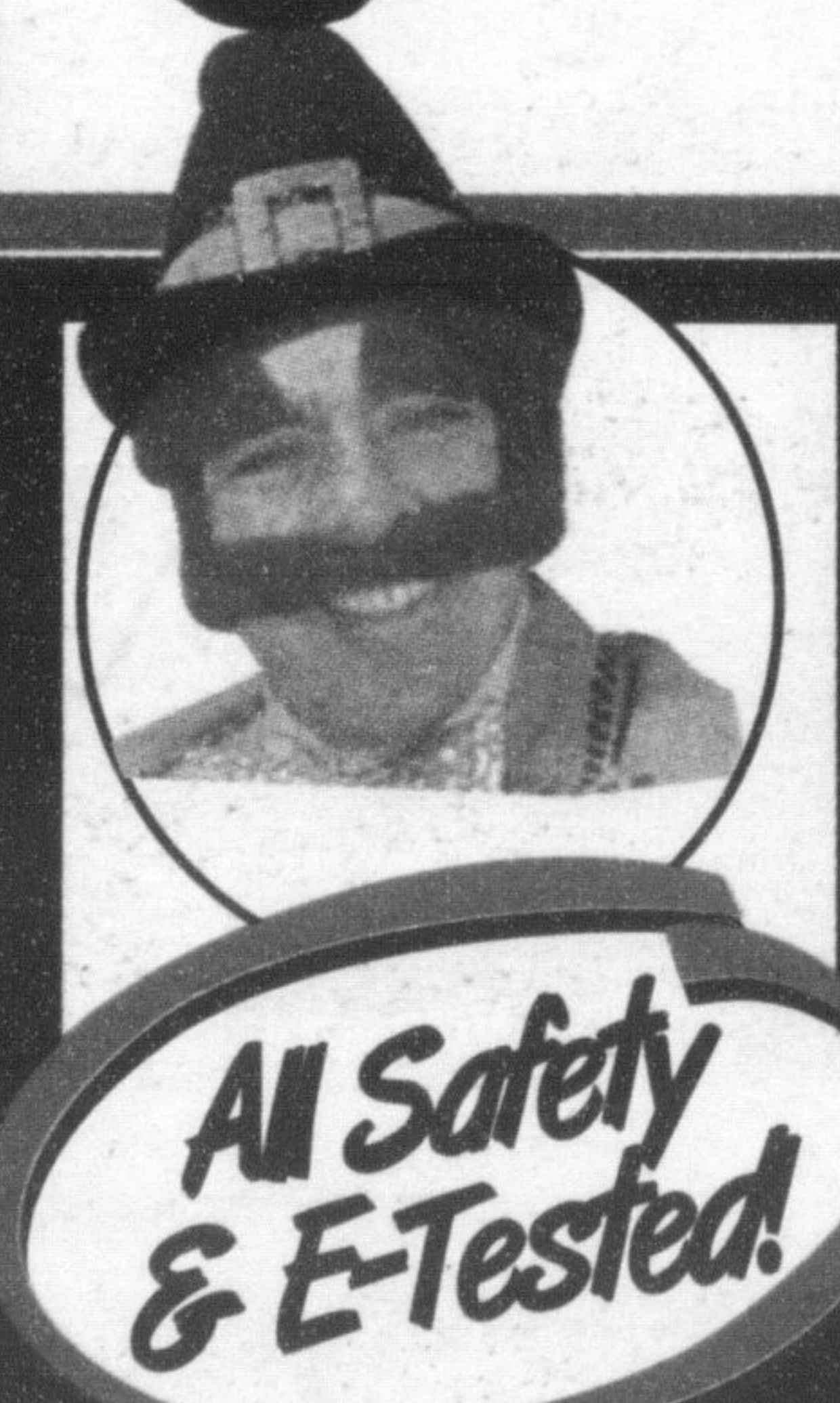
PURCHASE FOR **\$19,495*** OR LEASE FOR **\$290** †† PER MONTHS FOR 27 MONTHS WITH \$399 DOWN PAYMENT
LEASE APR **2.8%**

2006 DODGE CARAVAN

★★★★★ NHTSA 5 STAR Front impact crash test rating

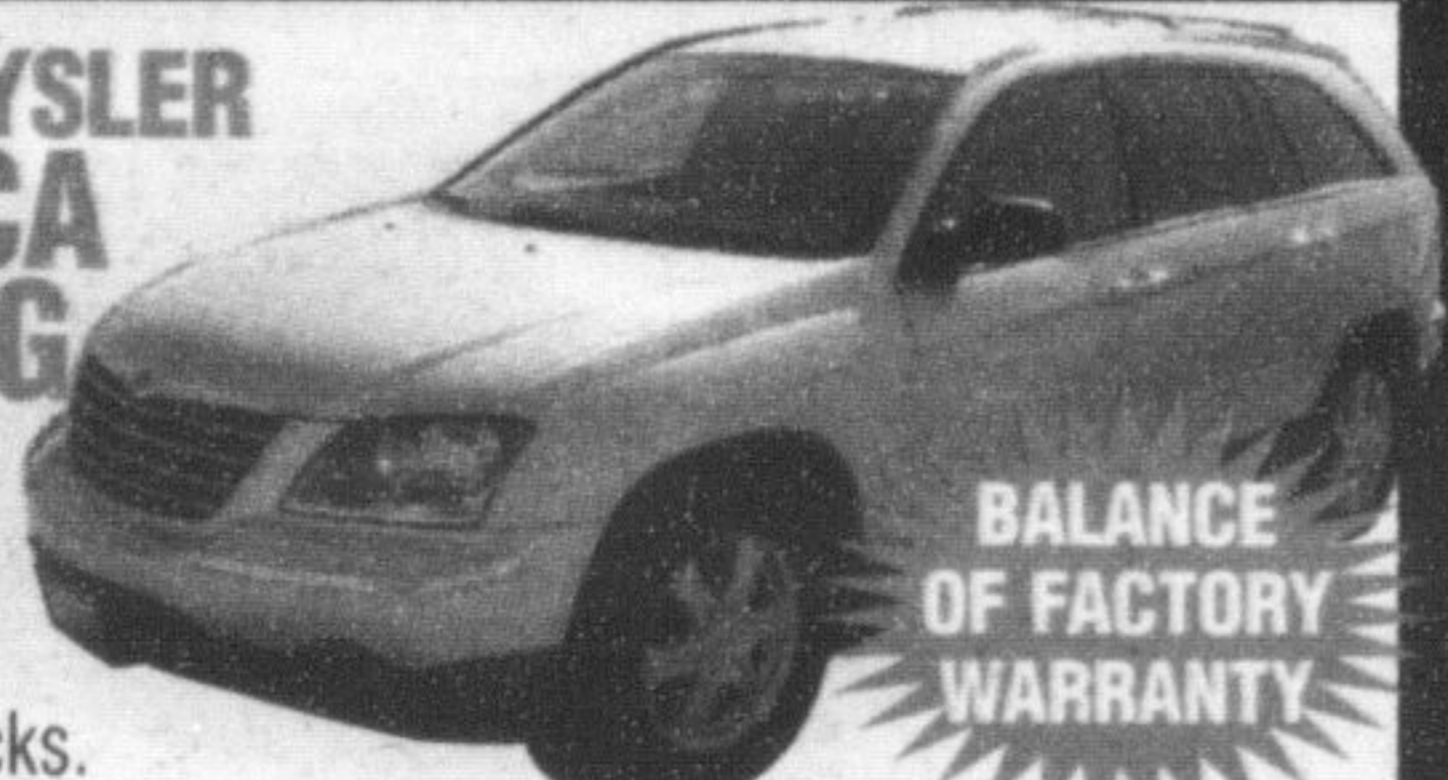
- 3.3L 180 hp V6 engine • Automatic transmission • p.windows, mirrors & locks • Air • PLUS MORE
- Fuel Consumption: • City: 12.2L/100 km (23 mpg) • Hwy: 8.2L/100 kms (34 mpg)
- CANADIAN EDITON CARAVAN'S FEATURES:**
 - Power rear quarter vents • Door trim with map pocket
 - Body coloured fascia and handles • Deluxe insulation
 - One touch down power driver window

*** LITTLE GARY'S LUCKY CHARMERS ***



2005 CHRYSLER PACIFICA TOURING

Equip 3.5L 6 cyl., leather trim, p.seats, p.window & locks.



\$25,788*

2005 CHRYSLER 300

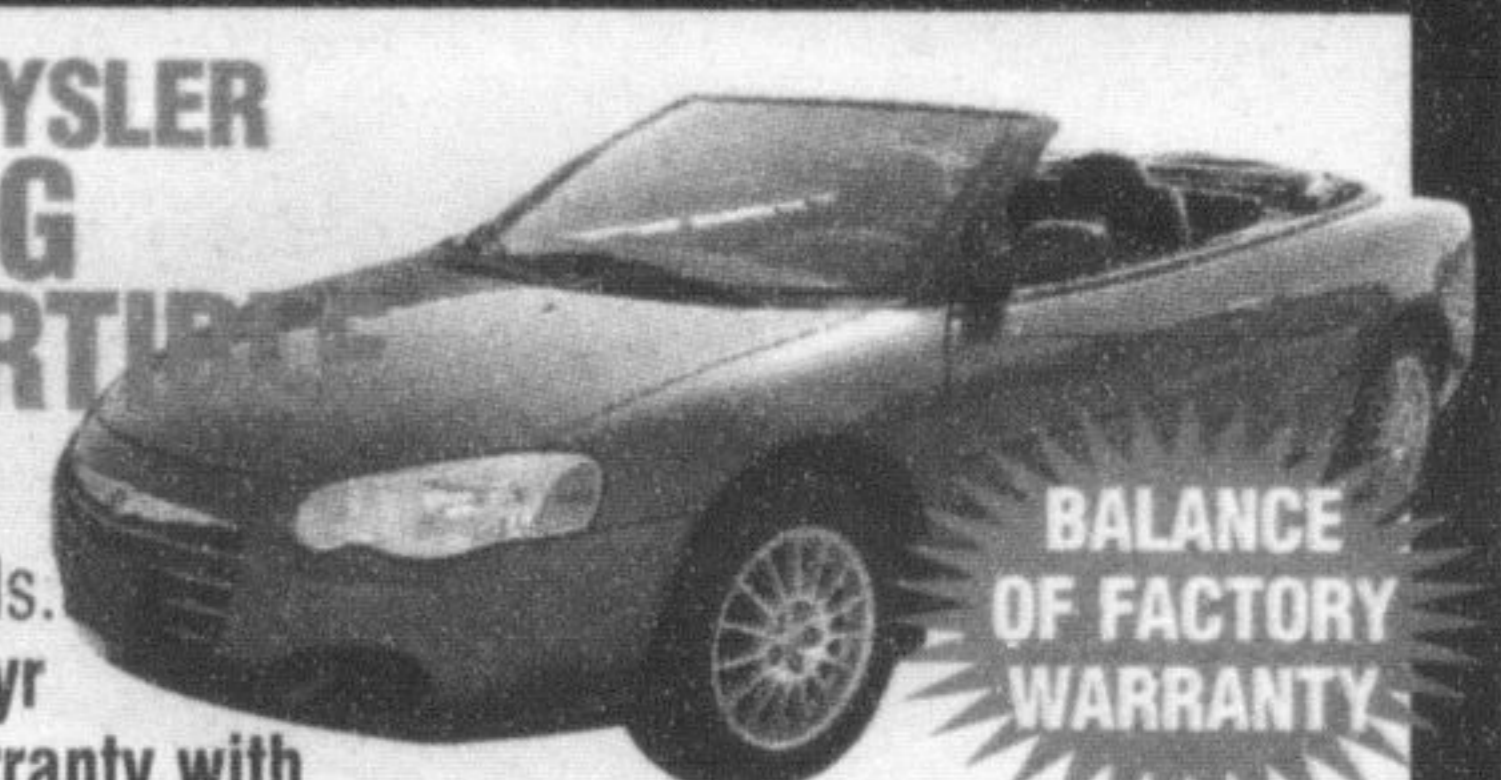
6 cyl with p.moonroof, alum wheels, p.seat.



\$23,888*

2005 CHRYSLER SEBRING CONVERTIBLE

6 cyl, pw, pd, CD, alum wheels. Bal. of Fact. 5 yr or 100,000 warranty with only 13,000kms



\$23,988*

Hunt Chrysler Jeep
Your **FIVE STAR** Dealership

ONLY IN A Jeep

500 BRONTE ST. S.

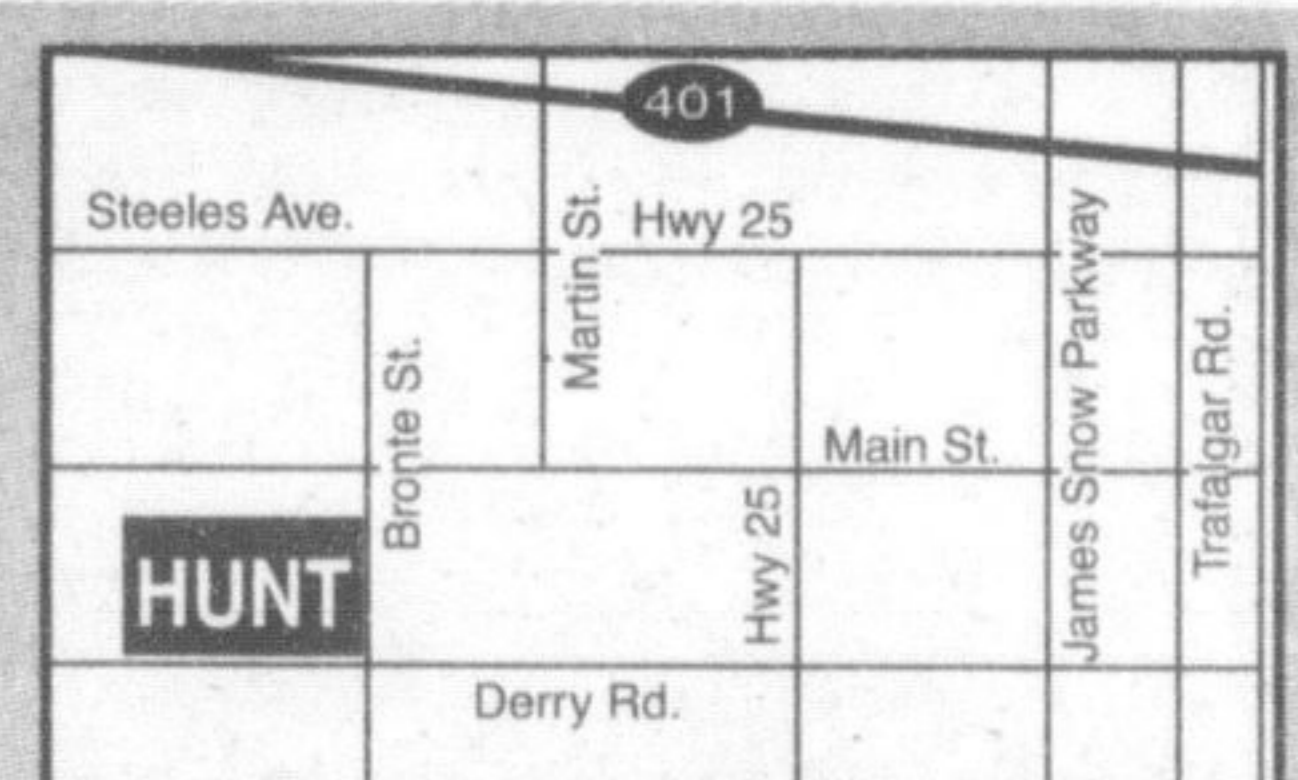
www.huntchrysler.ca

SERVICE/PARTS: www.huntchrysler.com

Milton: Toll Free: Email:

(905) 876-2580
1-866-848-8816
sales@huntchrysler.com

SALES: Mon-Thurs 9-9, Fri. 9-6, Sat. 9-5
SERVICE: Mon-Fri 8-5, Tues. 8-8, Sat. 8-12



FINANCING PROVIDED BY
Chrysler Financial

*Limited time offers apply to retail deliveries only. Exclude freight (\$1,200 for caravan, Grand Caravan), license, insurance, registration, \$50 PPSA, any retailer administration fees and applicable taxes. Retailer order/trade may be necessary. Financing and leasing are subject to approval by Chrysler Financial. See retailer for specific pricing details and conditions. Retailers are free to set individual prices * Purchase price applies only to 2006 Dodge Caravan (28C) models. Leases based on 39 month terms for 2006 Grand Caravan Canadian edition, total lease obligations are \$14,143 with \$1,000 down, \$14,115 with \$3,000 down and \$14,089 with \$4,495 down @ 0.8% lease APR. Leases based 27 month terms for 2006 Caravan (28C) total lease obligations are \$8,229 with \$399 down payment, \$8,452 with \$1,000 down, \$8,400 with \$3,000 and \$8,356 with \$4,495 down @2.8% lease APR. kilometers limited to 45,900 for 27 month terms and 66,300 for 39 month terms; charge of \$0.15/km for excess kilometers. † Lease payment & purchase price is base on Caliber SXT 240 pkg. Destination charge (\$1,050) plus all taxes & lic fee & admin fees extra. Lease obligation is \$10,725 @ 4.8% lease APR with 0 down. 66,300 kms allowed for 39 month lease term. Charge of \$.15/km for excess.