

Residents pleased with news about towers

from REGION on page A1
decided to instead upgrade the current phone-based system it uses for the water monitoring network.

"It (an upgraded phone system) turned out to be beneficial," he said.

When asked if it was residents' feedback that swayed the Region's position on the towers, he said it partially impacted the final decision.

"There's no question the residents' input was part of our evaluation process," he said, but noted further discussion with the NEC and a technical evaluation also played into the verdict.

For the residents who were against the towers, like David Franklin — who started a petition and garnered over 90 signatures of those also opposed to the concept — the Region's change of heart on the proposal came as welcome news.

"We are delighted at the decision for

the Region to withdraw its application," he said. "The democratic process did appear to work."

The Milton Rural Residents Association — which had called on Halton to stop the whole concept in its tracks and put it through a public consultation process — also applauded the Region's move.

"It's great news. We're really pleased," said association president Mike Grimwood. "Certainly we don't want to minimize the necessity of having safe water, but I think there are other better ways to do that."

Among local residents' concerns

were what the towers would look like, the precedent they would set for allowing other communication towers on the escarpment and the potential impact they would have on property values.

Dennis said the Region will inform the residents who received initial notification of the proposed towers that those plans are no longer proceeding.

Two other sites in Milton — the water tower on Steeles Avenue and the landfill on Regional Road 25 — were also proposed to be locations for towers. But, that idea has also been called off.

Upgrades to the communication system are required to enable the Region to effectively monitor and control the local water facilities, and also to meet Ministry of the Environment requirements regarding data acquisition.

Dennis said the necessary improvements to all of the north Halton monitoring sites, which are expected to be complete this year, are anticipated to cost \$1.4 million.

Melanie Hennessey can be reached at mhennessey@miltoncanadianchampion.com.

Q: Why did the chicken cross the road?



A: To live longer.

By walking across the road, the chicken gained a healthier heart and lungs... and a positive attitude.



Proposal doesn't go with plan

from TOWN on page A1
Hwy. 407.

It also identifies the most appropriate long-term land uses for the properties surrounding the transit line.

In the study, Major's property is designated for things like residential or office uses.

Major also applied to the Town for approval of a temporary use bylaw that would permit outdoor storage of passenger and recreational vehicles for a three-year period at the same property.

But council turned this down as well, again following staff's recommendation.

A staff report notes that the outdoor storage concept doesn't conform with the Region's Official Plan, isn't compatible with adjacent land uses and doesn't fulfill reasonable planning standards.

THUMBS UP!
Whatever you're after, just thumb through the Classifieds and you'll be good to go! That's all there is to it!

The Canadian Champion
905-878-2341
875 Main Street, Milton
Classified@miltoncanadianchampion.com

WANTED

B & W COINS
WE BUY AND SELL MOST COINS, BILLS & TOKENS
Willard Burton & Robert Beaton

Located at Crawford's in Norval
We will travel to do appraisals or collections

Tel: (416) 254-6569 Fax: (905) 456-9625
E-mail: b_and_w@sympatico.ca

B & W COINS
209-Bowaird Rd. W. (Hwy. 7)

CNA LM350-ONA Member

NORTH END NISSAN

LET'S SEAL THE DEAL ON ALL IN-STOCK NISSAN'S

2006 MURANO'S



3.8% FINANCING AVAILABLE

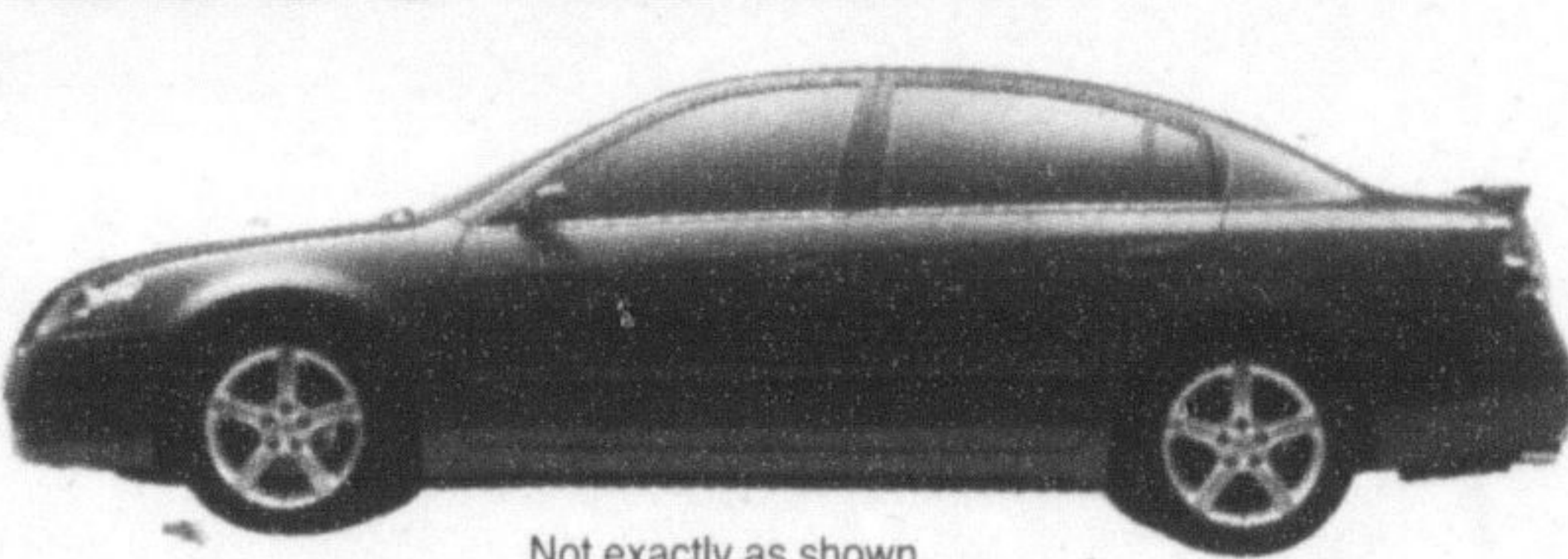
\$3000 CUSTOMER CASH (ON ALL MURANO'S)

LEASE FOR **\$519** /MONTH FOR 48 MONTHS
\$5000 Down tax-incl.
- 3000 Cash back.
\$2000 Down (cash or trade)

BUY FOR **\$725** /MONTH FOR 72 MONTHS

- 3.5L DOHC 24-valve V6 engine (245 HP) • Xtronic CVT Transmission
- 3,500lb towing capacity • ABS • 18" alloy wheels (6-spoke) • Fog lights (front) • Roof Rails • Cruise control • Power heated outside mirrors • Power outdoor locks • Power windows with Auto up/down • Power adjustable pedals • Rearview camera • Outside temp display • AM/FM/Cassette audio system w/ 6-disc in dash CD changer • BOSE Audio system (250 watts)

2006 ALTIMA'S



1.8% FINANCING AVAILABLE

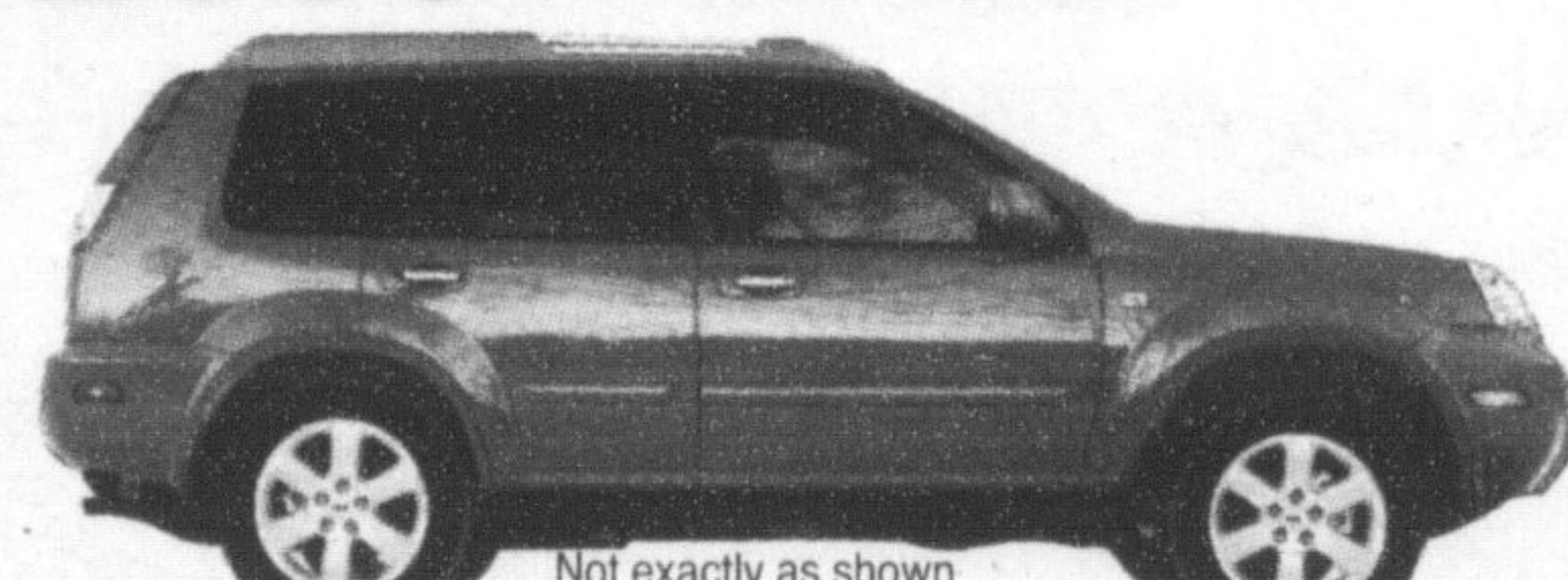
\$3000 CUSTOMER CASH (ON ALL ALTIMA'S)

LEASE FOR **\$319** /MONTH FOR 48 MONTHS
\$5000 Down tax-incl.
- 3000 Cash back.
\$2000 Down (cash or trade)

BUY FOR **\$435** /MONTH FOR 72 MONTHS

- 2.5L, 16 Valve, DOHC Engine (175HP) • 4 Wheel Disc Brakes • Mudguards (Front & Rear) • Auto On/Off Headlights • Heated Outside Mirrors (Colour Keyed) • 8 Way Manual Driver's Seat • 60/40 Split Rear Seat w/Lock • Variable Intermittent Wipers • Remote Fuel Lid Release • Power Trunk Release • Cruise Control • Tilt & Telescope Steering Column (Manual) • Power Heated Outside Mirrors • Power Door Locks • Power Windows w/Driver's Side Auto "Up/Down" • AM/FM/CD Audio System (100 Watt) • 6 Speakers • Immobilizer Key System • Automatic Transmission • ABS.

2006 X-TRAIL'S



1.8% FINANCING AVAILABLE

\$3000 CUSTOMER CASH (ON ALL X TRAIL)

LEASE FOR **\$329** /MONTH FOR 48 MONTHS
\$5000 Down tax-incl.
- 3000 Cash back.
\$2000 Down (cash or trade)

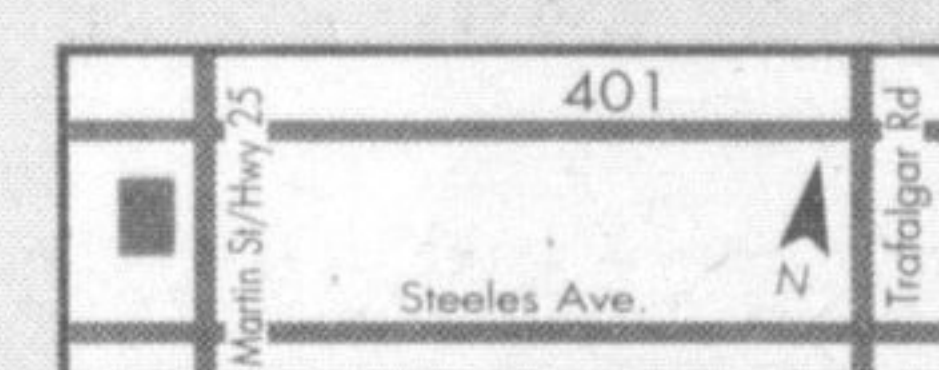
BUY FOR **\$444** /MONTH FOR 72 MONTHS

- 2.5L, 16 Valve, DOHC Engine (165HP)
- 4 Wheel Disc Brakes • ABS • air conditioning
- power windows • power locks • AM/FM/CD
- cruise control • remote entry • power heated mirrors • tilt steering column • 6 way adjustable driver seat.

Milton's
NORTH END NISSAN LTD.

610 MARTIN STREET, MILTON
905-878-4137

SALES DEPT. HOURS:
Mon.-Thurs. 9:00 - 9:00
Fri. 9:00 - 6:00
Sat. 9:00 - 5:00



www.nissan.ca

*2006 Murano-L6TG16 AA00 48 mth lease, 24,000 km per year, 4.5% APR, \$18,505 optional residual, 72 mth buy @ 5.8%. 2006 Altima-T4RG76 AE00 48 mth lease, 24,000 km per year, 5.8% APR, \$11,665 optional residual, 72 mth buy @ 5.8%. 2006 Xtrail-W6R676 AA00 48 mth lease 24,000 km per year, 5.8% APR, \$11,867 optional residual, 72 mth buy @ 5.8% APR. Excess km charge on all models is 10c per km over 96,000 km.