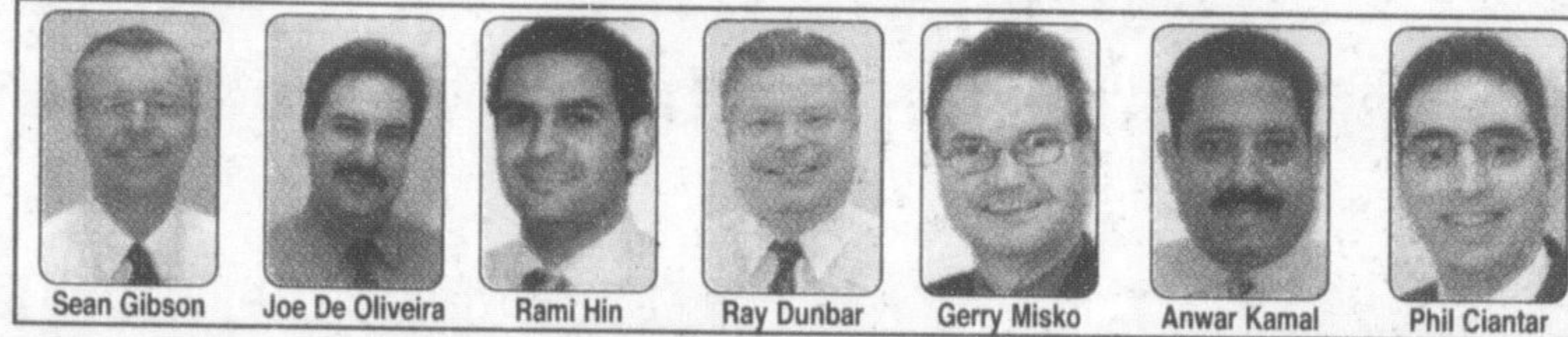


Visit us on the web at [www.miltonchrysler.com](http://www.miltonchrysler.com)

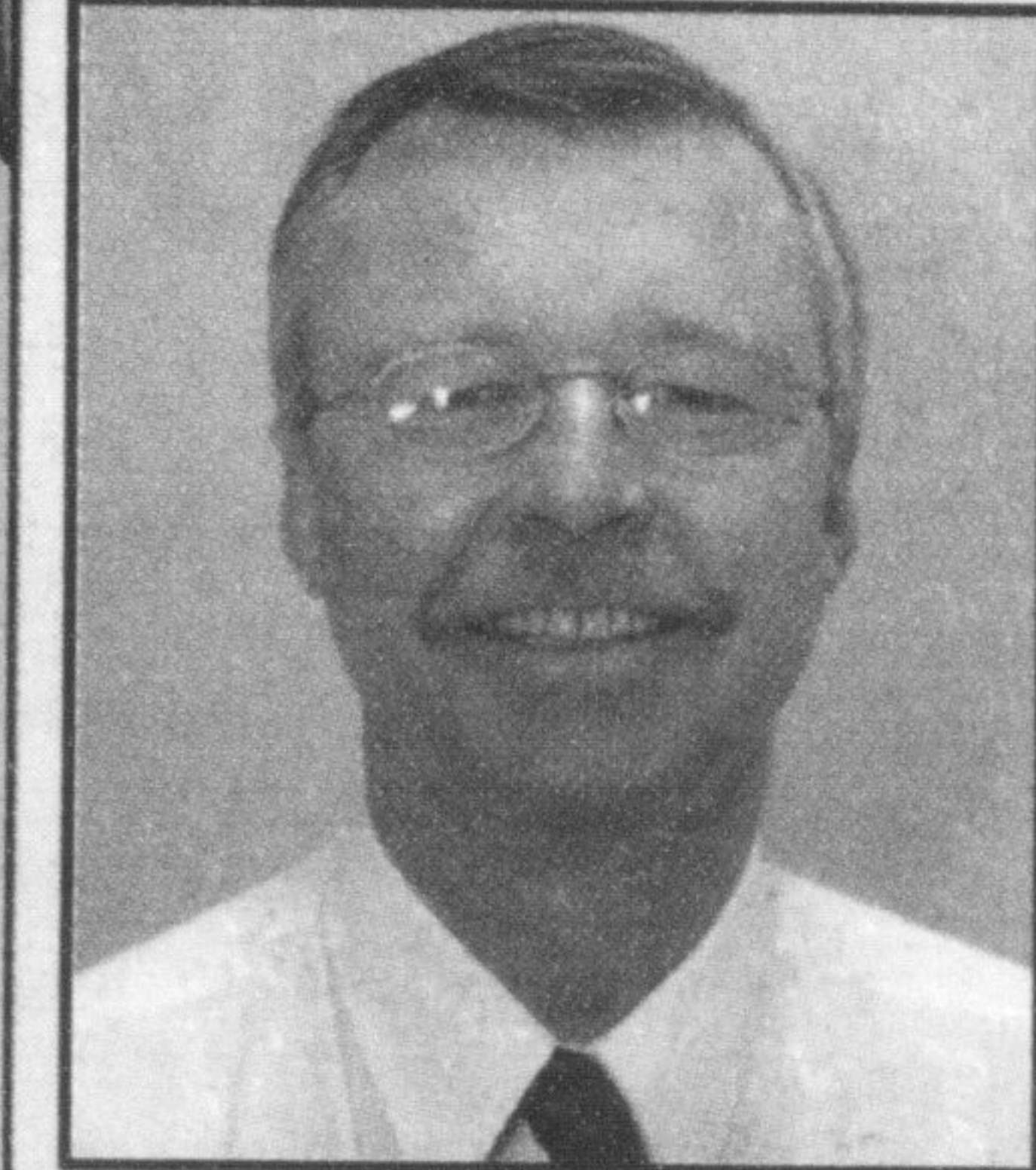
# the momentum continues



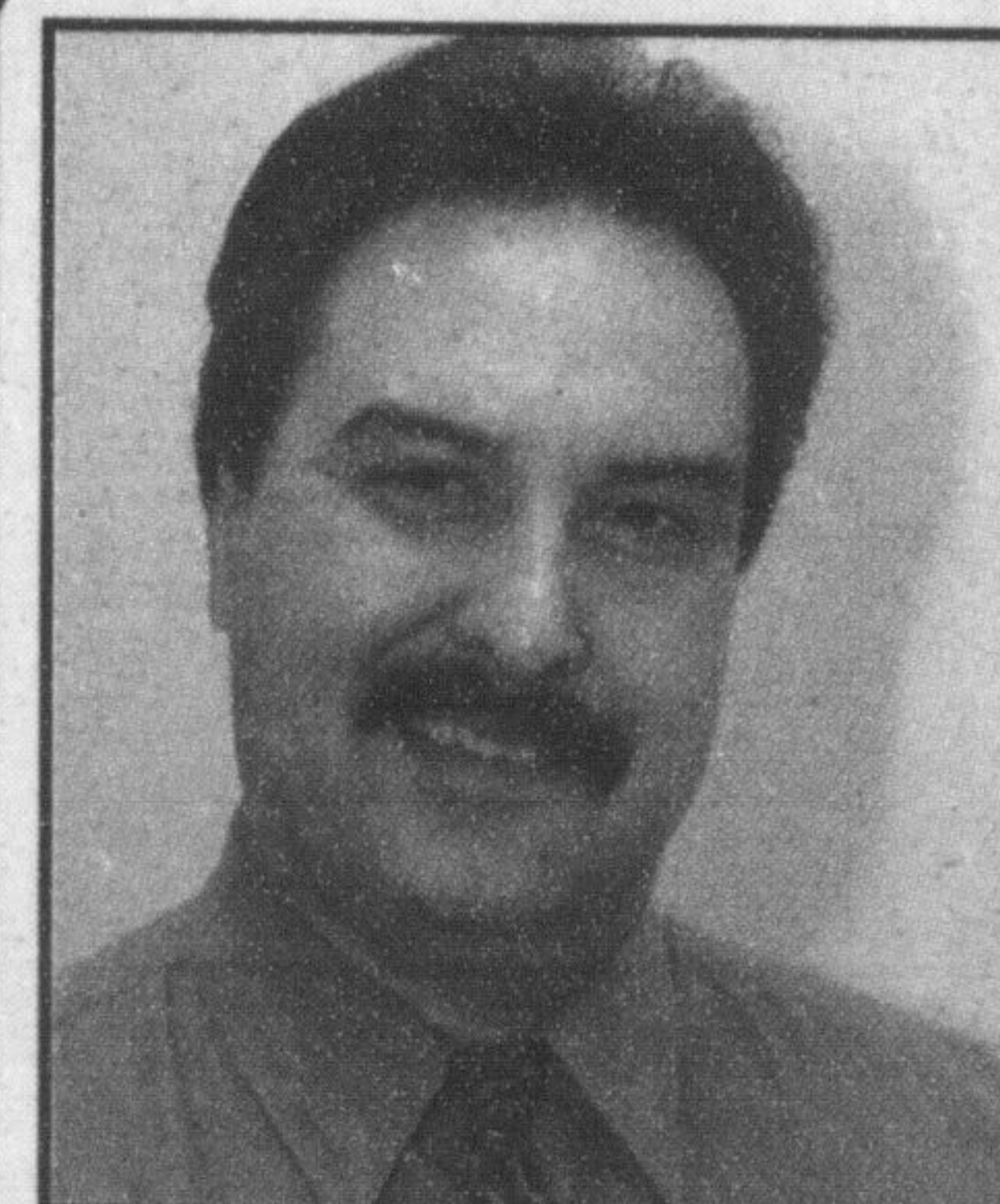
**5/100**  
CHRYSLER  
DODGE • JEEP  
WARRANTY

3 yr/60,000 km. comprehensive warranty coverage  
5 yr/100,000 km. powertrain warranty coverage  
5 yr/100,000 km. Roadside Assistance  
5 yr/160,000 km. Outer Body Rust Through  
Corrosion Warranty

## CONGRATULATIONS!



**SEAN GIBSON**  
DAIMLER CHRYSLER  
CANADA 2005  
SALES GUILD  
PLATINUM MEMBER



**JOE De OLIVEIRA**  
DAIMLER CHRYSLER  
CANADA 2005  
SALES GUILD  
PLATINUM MEMBER  
AND SENATE  
COUNCIL MEMBER

**"SUPER DEAL"** HURRY THEY WON'T LAST LONG



**BRAND NEW 2005 DODGE SX 2.0**  
AUTO • AIR • AM/FM/CD • AND MUCH MORE!  
**\$12,999\***

**"NOW IN STOCK"**



**FROM \$15,995\***  
SPECIAL LEASE OFFER ZERO DOWN PAYMENT STARTING AT **\$233** Per Month

**2007 DODGE CALIBER**

**THE LAST OF OUR 2005 MUST BE SOLD!**

**2005 CHRYSLER PACIFICA TOURING**  
ALL WHEEL DRIVE  
V6, LEATHER, LOADED STK. #669563

MSRP \$51,245 **FINAL CASH PRICE \$40,758**

**2005 CHRYSLER CROSSFIRE SRT-6**  
LEATHER, 330 HP, SUPERCHARGED ENGINE,  
LOADED STK. #040433

MSRP \$64,025 **FINAL CASH PRICE \$51,899**

**2005 DODGE MAGNUM R/T**  
LEATHER, GPS, LOADED, 2 LEFT STK. #606519

MSRP \$45,195 **FINAL CASH PRICE \$37,334**

**2005 DODGE DAKOTA QUAD CAB**  
SLT 4X4  
V8, AUTOMATIC, LOADED STK. #136577

MSRP \$40,005 **FINAL CASH PRICE \$31,363**

**2005 DODGE GRAND CARAVAN**  
STOW 'N' GO  
V6, 7 PASS, ABS, AUTO, AIR, LOADED STK. #357413

MSRP \$33,025 **FINAL CASH PRICE \$22,994**

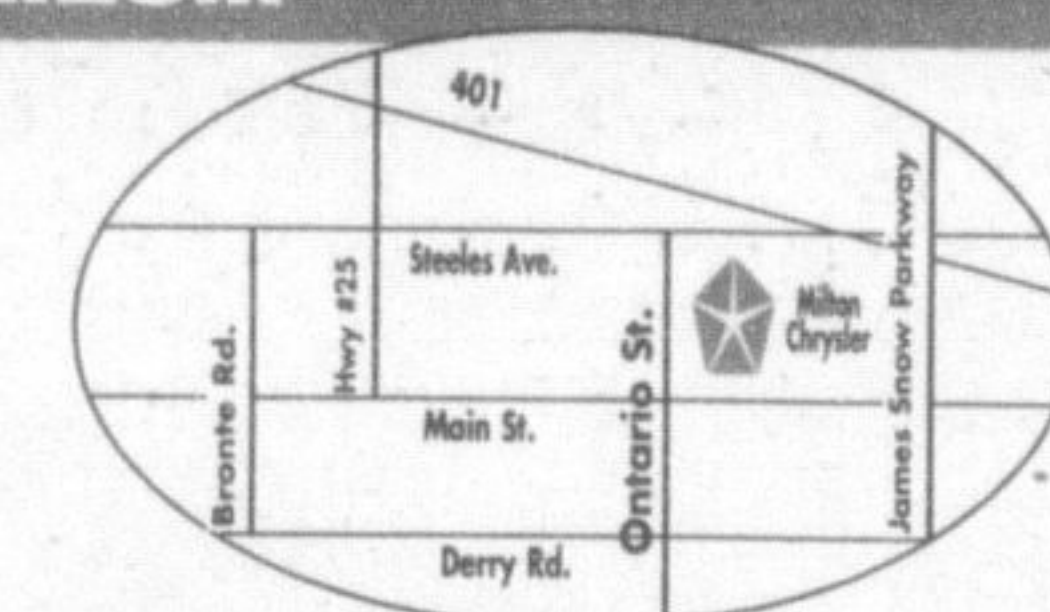
**2005 CHRYSLER SEBRING TOURING**  
DEMO  
V6, AUTO, AIR, LOADED STK. #539961

MSRP \$26,195 **FINAL CASH PRICE \$19,555**  
NO CHARGE FREIGHT A/C + FUEL & TAX

FINANCING PROVIDED BY...Chrysler Financial...VISIT US FOR MORE DETAILS!!!

**878-8877**

**81 ONTARIO ST. N., MILTON**  
Visit us at [www.miltonchrysler.com](http://www.miltonchrysler.com)  
**1-800-303-3257**



**ONE  
BLOCK  
NORTH OF  
ZELLERS**

\*Based on 2004 year end SSI results for our dealer group, verified by Daimler-Chrysler Canada. \*Cash sale price includes DA(dealer allowance), add for applicable freight, admin. fee, taxes and licence fee (demos no charge freight, a/c tax and fuel tax). Special finance and lease rates vary by model. See dealer for details. OAC please payment terms as shown. Due at signing applicable down payment, first payment, applicable freight, admin fee, taxes and licence fee. 20,400 km annual mileage allowance. Excess kilometre charge 15¢ per km. Closed end, walk away lease, OAC. † See dealer for details. All offers expire March 31, 2006. See dealer for details.