

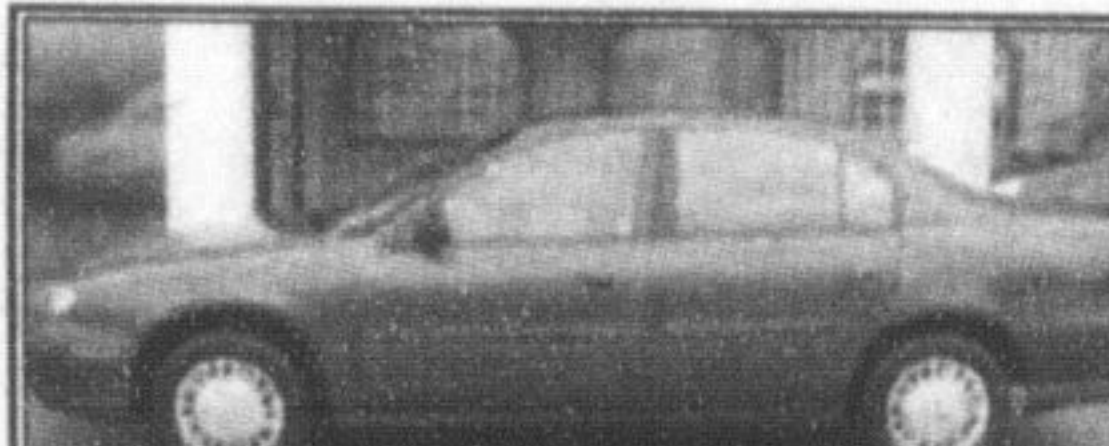
Some dealers like to talk about anything other than warranties.

We'd rather talk about our warranties than anything else.

Here's just a sample of over 250 vehicles we have in stock.



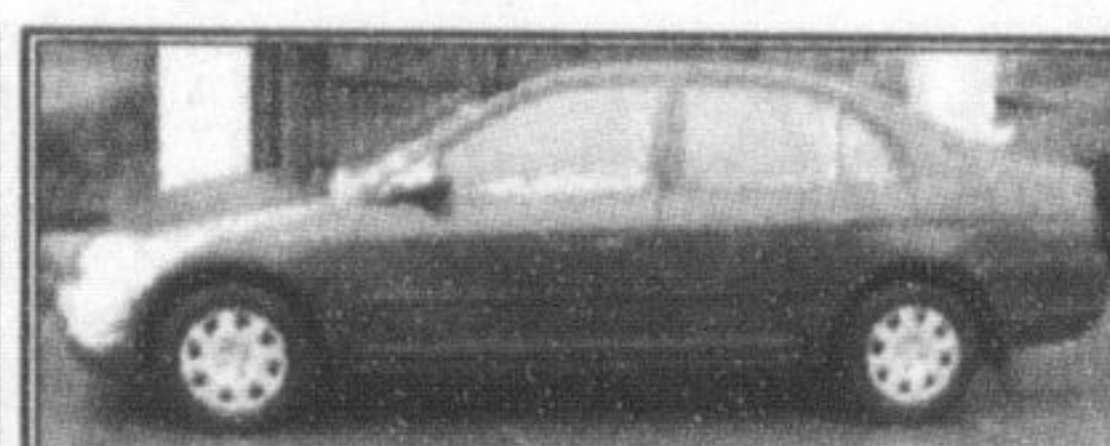
2004 CHEVROLET AVALANCHE Z66 1500
 FWD, Dual Air Bag, Automatic, Alumi. Wheels, AM/FM CD, Cloth, Dual Climate, Windows, Locks, Mirrors, Steering, Brakes, ABS, Traction Control, Driver Seat, Info. Centre, Delay Wipers, Illuminated Vanity, Keyless Entry, Cruise, Outside Temp., Compass, Electrochromatic Mirror, Wheel Audio, Tilt Steering, Overdrive, Roof Rack, Fog Lights.
\$23,995



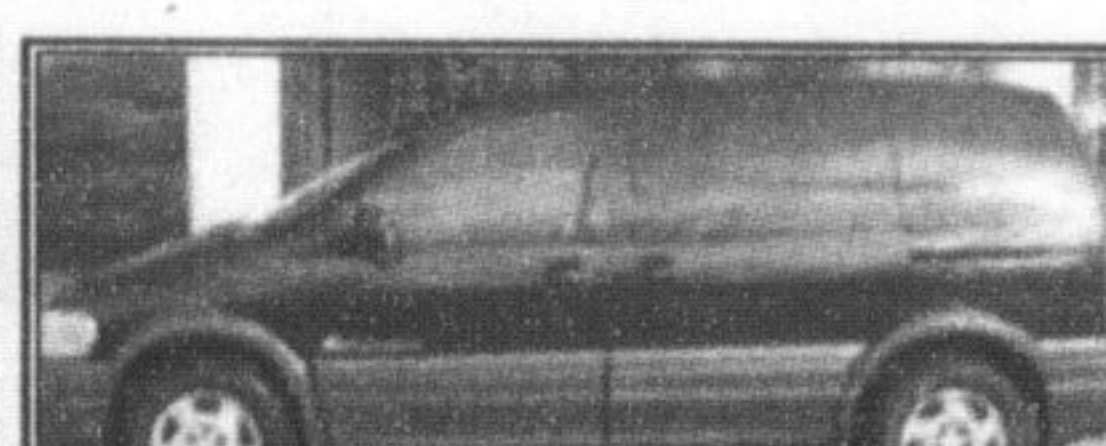
2002 SATURN SC1
 FWD, Dual Air Bag, Manual, Aluminum Wheels, AM/FM CD, Cloth, Air Conditioning, Locks, Trunk, Steering, Brakes, Delay Wipers, Keyless Entry, Tilt Steering, Bucket Seats, Rear Split Seat, Rear Fold Seat, Console.
\$6,995



2002 HYUNDAI ELANTRA VE
 FWD, Dual Air Bag, Manual, Hubcap Wheels, AM/FM/CD, Cloth, Air Conditioning, Windows, Locks, Mirrors, Steering, Brakes, Delay Wipers, Tilt Steering, Memory Seats, Rear Split Seat, Console, Child Lock.
\$8,995



2003 CHEVROLET MALIBU
 FWD, Dual Air Bag, Automatic, Hubcap Wheels, AM/FM CD, Cloth, Air Conditioning, W/Power, Windows, Mirrors, Locks, Steering, Brakes, Delay Wipers, Tinted Glass, Keyless Entry, Cruise, Tilt Steering, Overdrive, Front Split Seat, Rear Fold Seat, Trailer Hitch, Theft Lock.
\$12,785



2002 PONTIAC MONTANA
 FWD, Front and Side Air Bag, Automatic, Hubcap Wheels, AM/FM/CD, Cloth, Air Conditioning, Windows, Locks, Mirrors, Steering, Brakes, ABS, Delay Wipers, Rear Wiper, Tinted Glass, Tilt Steering, Overdrive, Fog Lights, Light Group, Child Lock, Theft Lock.
\$10,995

YEAR	MAKE / MODEL	KMS	SALE PRICE
ACURA			
2002	Acura EL 1.7 Limited Premium	96,620	\$16,950
BMW			
2000	BMW 323ci	133,353	\$19,995
BUICK			
2003	Buick Regal LS	73,122	\$14,995
2002	Buick Century Limited	92,139	\$11,995
2002	Buick Century Special Edition	116,879	\$10,995
2001	Buick Regal LS	87,565	\$11,995
CADILLAC			
2003	Cadillac CTS	63,143	\$27,995
2003	Cadillac CTS	73,090	\$25,995
2003	Cadillac CTS	46,189	\$28,995
CHEVROLET			
2005	Chevrolet Impala LS	41,486	\$20,995
2004	Chevrolet Avalanche Z66 1500	54,508	\$23,995
2004	Chevrolet Avalanche Z71 4x4	74,301	\$27,950
2004	Chevrolet Impala	62,433	\$13,990
2004	Chevrolet Impala	64,691	\$14,995
2004	Chevrolet Silverado LX X-Cab Z71	48,241	\$28,950
2004	Chevrolet Venture	55,742	\$12,995
2003	Chevrolet Tahoe LT	85,614	\$25,995
2003	Chevrolet Avalanche Z71	60,281	\$24,990
2003	Chevrolet Malibu	46,473	\$12,785
2003	Chevrolet S10 X-Cab LS Stepside	68,897	\$16,995
2003	Chevrolet Suburban LT 4x4	115,084	\$23,995
2003	Chevrolet Venture LS Extended	95,645	\$12,995
2002	Chevrolet Impala	54,642	\$14,995
2002	Chevrolet Monte Carlo	42,667	\$17,995
2002	Chevrolet Venture LS	70,996	\$11,995
2002	Chevrolet Venture LS	71,588	\$12,950
1999	Chevrolet Silverado Iton	234,100	\$14,950
DODGE			
2006	Dodge Magnum SXT	38,298	\$23,995
2006	Dodge Magnum SXT	38,380	\$23,995
2006	Dodge Magnum SXT	38,016	\$23,995
2003	Dodge Ram SLT Crew Cab 4x4	56,676	\$24,950
2002	Dodge Caravan SE	57,902	\$12,995
2002	Dodge Caravan SE	78,234	\$11,995
2002	Dodge Grand Caravan Sport	78,099	\$14,995
2002	Dodge Grand Caravan Sport	77,977	\$13,995
FORD			
2005	Ford Escape XLT 4x4	36,167	\$22,895
2005	Ford Freestar SE	35,532	\$16,995
2005	Ford Freestar SE	51,561	\$15,995
2004	Ford Escape XLT	65,689	\$21,995
2004	Ford F150 Lariat Crewcab 4x4	72,689	\$28,995
2004	Ford F250 S.D. XLT Ext Cab	83,605	\$29,950
2003	Ford Escape XLT 4x4	50,000	\$19,995
2003	Ford Windstar Sport	59,000	\$14,995
2003	Ford Windstar SEL	48,000	\$16,995
2003	Ford Windstar Limited	63,937	\$17,995
2003	Ford Windstar Sport	74,272	\$14,995
2003	Ford Explorer XLT 4x4	49,000	\$18,995
2003	Ford Explorer XLT	56,000	\$20,995
2003	Ford Focus LTS	47,000	\$13,995
2003	Ford Escape XLT 4x4	82,166	\$17,995
2003	Ford F150 Crew Cab 4x4 Off Road	72,590	\$23,995
2003	Ford F150 Super Crew 4x4 Off Road	63,781	\$23,995
2003	Ford Windstar Sport TV/VCR	74,272	\$13,995

YEAR	MAKE / MODEL	KMS	SALE PRICE
2003	Ford Windstar Sport Entertainment Package	29,923	\$15,995
2002	Ford E-350 Cube Van	116,000	\$21,995
2002	Ford Explorer Eddie Bauer 4x4	66,180	\$18,995
2002	Ford F150 XLT 4x4 Super Crew	72,637	\$21,995
GMC			
2005	GMC Savana Cargo 2500	21,825	\$24,950
2004	GMC Sierra SL	57,163	\$15,995
2004	GMC Sierra SLE X-Cab Stepside	61,627	\$22,950
2004	GMC Yukon XL Denali	90,604	\$33,995
2004	GMC Yukon Denali	45,158	\$39,995
2003	GMC Sierra SLE 2WD X-Cab	42,349	\$20,995
2003	GMC Sierra SLE Crew Cab H.D. 4x4	44,119	\$26,995
2003	GMC Yukon SLT	86,160	\$29,995
2003	GMC Yukon SLT	81,161	\$25,995
2003	GMC Yukon Denali XL	36,518	\$37,995
2002	GMC Sierra SL Ext Cab	134,413	\$14,995
2000	GMC Jimmy SLE 4x4	120,245	\$11,950
2000	GMC Yukon SLT 4x4	116,386	\$18,995
HONDA			
2003	Honda Accord EXL Coupe	51,117	\$21,995
2003	Honda Odyssey EX	49,999	\$25,995
2002	Honda Civic DX-G	74,011	\$12,995
HYUNDAI			
2004	Hyundai Santa FE GL AWD	63,579	\$19,995
2003	Hyundai Tiburon SE Hatchback	68,087	\$15,950
2003	Hyundai Sonata GL	83,886	\$10,995
2002	Hyundai Elantra VE	55,171	\$10,950
2002	Hyundai Sonata GLX	68,241	\$13,995
2002	Hyundai Sonata GL	95,893	\$10,995
2002	Hyundai Sonata GL	78,389	\$10,995
2002	Hyundai Sonata GL	75,861	\$10,995
2002	Hyundai Santa FE GL	81,611	\$13,995
2002	Hyundai Santa FE GLS	77,052	\$18,995
2002	Hyundai Santa FE GLS	95,893	\$17,995
2001	Hyundai XG300	65,352	\$13,995
NISSAN			
2005	Nissan Altima 2.5S	64,154	\$18,995
2003	Nissan Maxima SE	69,089	\$20,995
2002	Nissan Altima 2.5S	69,652	\$15,950
2002	Nissan Maxima GLE	95,486	\$16,995
2002	Nissan Pathfinder Chilkoot	91,534	\$15,990
2002	Nissan Sentra GXE	69,077	\$10,995
2002	Nissan Sentra XE	36,985	\$11,995
OLDSMOBILE			
2002	Oldsmobile Alero GL V6	54,409	\$10,995
PONTIAC			
2004	Pontiac Grand Prix GT2	57,679	\$16,995
2003	Pontiac Grand AM SE	62,519	\$12,995
2003	Pontiac Grand AM GT	70,147	\$13,950
2003	Pontiac Grand Prix GT	36,026	\$14,995
2003	Pontiac Grand Prix GT	72,575	\$13,995
2003	Pontiac Montana Sport	72,272	\$13,995
2003	Pontiac Montana EXT	38,005	\$16,950
2003	Pontiac Montana EXT	75,918	\$14,950
2003	Pontiac Montana	67,404	\$13,995
2002	Pontiac Grand AM SE	65,626	\$10,995
2002	Pontiac Grand AM SE	82,219	\$10,495
2002	Pontiac Grand AM SE	58,629	\$10,995
2002	Pontiac Grand AM SE	49,636	\$11,595

YEAR	MAKE / MODEL	KMS	SALE PRICE
2002	Pontiac Grand Prix GT	45,536	\$12,995
2002	Pontiac Grand Prix GT	77,915	\$13,595
2002	Pontiac Grand Prix GT	87,760	\$12,990
2002	Pontiac Montana	75,194	\$10,995
2002	Pontiac Montana	75,024	\$10,995
2002	Pontiac Montana	72,078	\$11,995
2002	Pontiac Montana	33,411	\$13,995
2002	Pontiac Montana	75,583	\$11,995
2002	Pontiac Montana	71,906	\$10,995
2002	Pontiac Montana EXT	59,233	\$13,995
SUBARU			
2002	Subaru Impreza WRX AWD	96,156	\$18,995
TOYOTA			
2006	Toyota 4Runner LTD	5,671	\$51,600
2006	Toyota Camry	8,567	\$26,995
2006	Toyota Camry LE "B" Package	8,200	\$27,950
2006	Toyota Corolla CE	3,450	\$19,500
2006	Toyota Corolla S	3,690	\$22,500
2006	Toyota Matrix	2,792	\$20,300
2006	Toyota Sienna LE	11,200	\$36,500
2006	Toyota Sienna XLE AWD	100	\$52,875
2006	Toyota Solara SLE Convertible	1,352	\$38,990
2006	Toyota Solara SLE Coupe	11,767	\$35,500
2006	Toyota Tacoma 4x4 Double Cab	3,800	\$39,500
2006	Toyota Tundra 4x4 Double Cab	5,060	\$51,100
2005	Toyota 4Runner V8 4x4 LTD	14,293	\$45,600
2005	Toyota 4Runner SR5 4x4	48,981	\$33,995
2005	Toyota Camry LE V6	40,497	\$22,950
2005	Toyota Corolla CE "C" Package	23,381	\$17,495
2005	Toyota Corolla CE "B" Package	23,865	\$16,990
2005	Toyota Corolla CE "B" Package	23,627	\$16,999
2005	Toyota Echo "B" Package	23,666	\$15,950
2005	Toyota Matrix XR	18,239	\$20,950
2005	Toyota Matrix	49,889	\$18,995
2005	Toyota Sienna XLE Limited	13,993	\$43,800
2005	Toyota Tacoma SR5 Double Cab 4x4	22,000	\$33,990
2005	Toyota Tacoma 4x4	1,577	\$34,300
2005	Toyota Tundra Double Cab 4x4 TRD Pkg	30,016	\$38,995
2004	Toyota Corolla CE "C" Package	42,450	\$15,995
2004	Toyota Sienna CE	31,959	\$24,783
2003	Toyota 4Runner LTD 4x4 V8	72,033	\$34,995
2003	Toyota 4Runner LTD 4x4	84,875	\$32,995
2003	Toyota Camry LE	80,206	\$17,495
2003	Toyota Echo Sedan	47,327	\$13,995
2003	Toyota Echo Sedan	30,675	\$13,983
2003	Toyota Matrix XRS	27,440	\$21,995
2003	Toyota Matrix XRS	77,221	\$19,995
2003	Toyota Sienna LE	67,155	\$21,995
2003	Toyota Tacoma X-Cab Pre Runner 2WD	38,488	\$24,995
2002	Toyota Camry SE V6	48,329	\$21,995
2002	Toyota Celica GT	105,892	\$16,995
2002	Toyota Echo	75,531	\$10,995
2002	Toyota Highlander AWD "B" Package	106,793	\$22,995
2002	Toyota Highlander AWD "B" Package	116,091	\$22,995
2001	Toyota 4Runner LTD 4x4	86,350	\$23,995
2000	Toyota Rav4 AWD	142,366	\$12,995
2000	Toyota Sienna XLE	108,076	\$16,873

OPEN SUNDAYS
 11:00 AM TO 4:00 PM

HERE ARE SOME GREAT VEHICLES FOR UNDER \$10,000

YEAR	MAKE	MODEL	KMS	SALE PRICE
2003	Chevrolet	Impala	122,611	\$9,990
2002	Chevrolet	Cavalier LS	70,506	\$8,595
2001	Dodge	Caravan SE	117,074	\$9,595
2000	Dodge	Grand Caravan	69,917	\$9,995
1999	Dodge	Caravan	128,084	\$6,995
1999	Dodge	Caravan	117,601	\$7,995
2000	Ford	Escort ZX3	130,594	\$6,895
2002	Hyundai	Elantra VE	77,422	\$9,995
2002	Hyundai	Elantra VE	55,696	\$8,995
2002	Hyundai	Elantra VE	77,422	\$9,950

YEAR	MAKE	MODEL	KMS	SALE PRICE
2002	Oldsmobile	Alero GL	72,466	\$9,995
2001	Oldsmobile	Alero	127,906	\$7,950
2001	Oldsmobile	Intrigue GL	134,653	\$8,995
2002	Pontiac	Grand AM SE	62,483	\$9,995
2002	Pontiac	Sunfire 4 Dr.	40,937	\$9,495
2002	Pontiac	Sunfire SLX	45,716	\$9,550
2002	Pontiac	Sunfire SLX	71,276	\$8,950
2002	Pontiac	Sunfire SLX	72,769	\$8,550
2001	Pontiac	Grand AM SE V6	53,247	\$9,895
2001	Pontiac	Sunfire SLX	73,033	\$7,995

YEAR	MAKE	MODEL	KMS	SALE PRICE
2000	Pontiac	Sunfire SE	61,989	\$7,995
2002	Saturn	SC1	65,001	\$6,995
2002	Saturn	SC1	77,429	\$6,995
2002	Saturn	SL1	51,729	\$8,995
2002	Saturn	SL1	92,118	\$7,995
2002	Saturn	SL1	75,368	\$8,495
2002	Saturn	SL2	97,985	\$6,995
2001	Saturn	SL1	56,467	\$7,995
2000	Toyota	Camry LE	177,599	\$8,590
1998	Toyota	Corolla		