



# THE TEST-DRIVE THAT'LL LEAVE YOU PUMPED.

Get into a Mazda6 and get \$200 in free gas... even if you buy a competitor's model.\*

## 2006 MAZDA6 SEDAN GS-I4

5-SPEED AUTOMATIC TRANSMISSION

Bold styling that matches its performance...the kind that's garnered more than 100 international awards.

LEASE FROM  
**\$239\*** -AT- **0%** APR

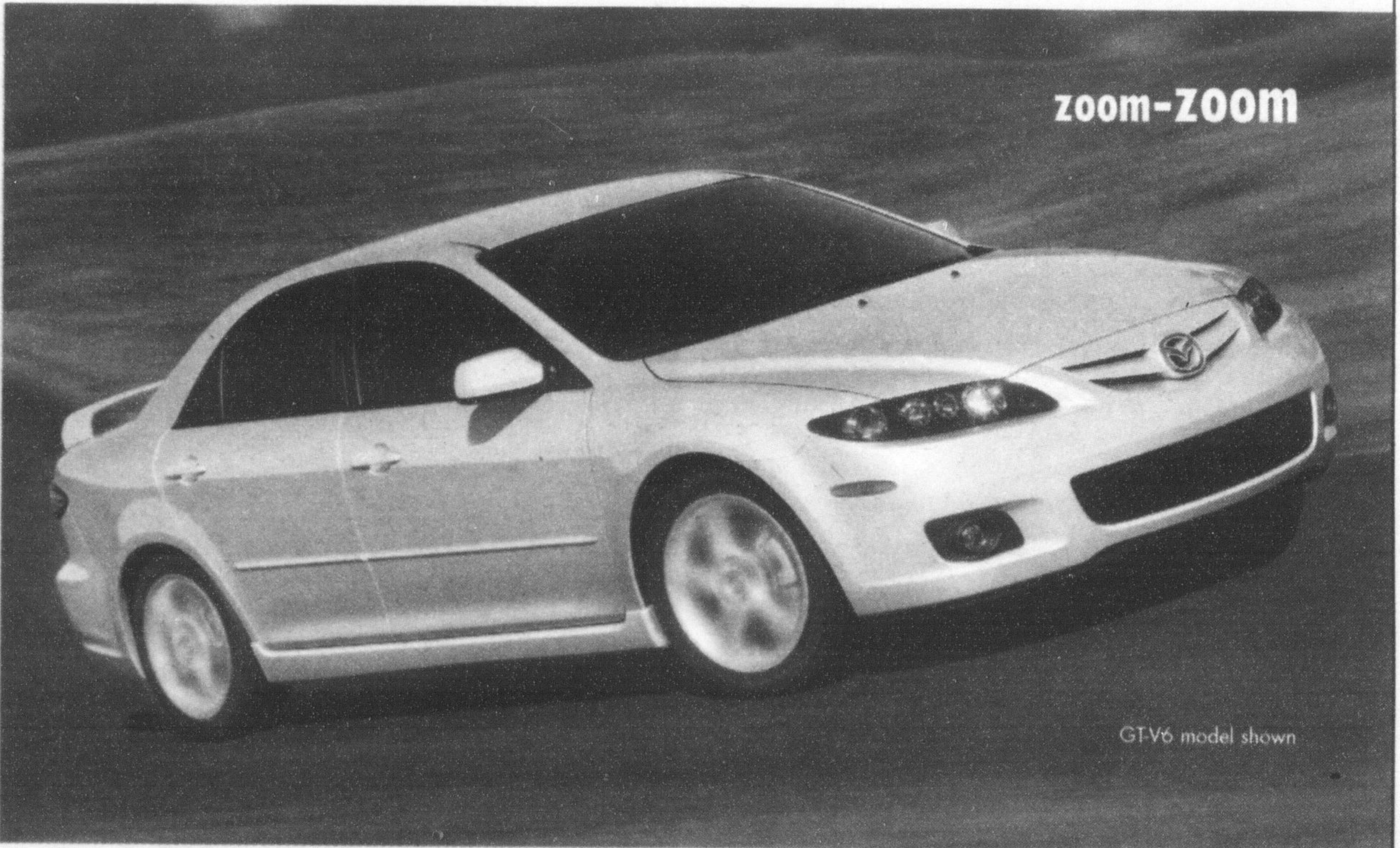
PER MONTH/24 MONTHS WITH \$3,695 DOWN PAYMENT

NO SECURITY DEPOSIT  
LEASE PAYMENT INCLUDES FREIGHT AND P.D.E.

-OR-

**2.9%**

PURCHASE FINANCING FOR 60 MONTHS†



zoom-ZOOM

GT-V6 model shown

Test-drive any new Mazda6 now through February 28. You'll then get a free \$200 Gas Card when you buy...even if you buy a Camry, Accord, or Altima. See your dealer for details.



GT-V6 model shown

### 2006 MAZDA6 SPORT HATCHBACK GS-I4

5-SPEED AUTOMATIC TRANSMISSION

The performance and style of the award-winning Mazda6 sedan, enhanced with the versatility of a fifth door.

LEASE FROM

**\$269\*** -AT- **0%** APR -OR- **2.9%**

PER MONTH/24 MONTHS WITH \$3,695 DOWN PAYMENT

PURCHASE FINANCING FOR 60 MONTHS†

NO SECURITY DEPOSIT  
LEASE PAYMENT INCLUDES FREIGHT AND P.D.E.



GT-V6 with Performance package model shown

### 2006 MAZDA6 SPORT WAGON GS-V6

6-SPEED AUTOMATIC TRANSMISSION

Get all the power, performance, and handling of the Mazda6 family, plus space and cargo capability that even rivals some SUVs.

LEASE FROM

**\$279\*** -AT- **0%** APR -OR- **2.9%**

PER MONTH/24 MONTHS WITH \$3,795 DOWN PAYMENT

PURCHASE FINANCING FOR 60 MONTHS†

NO SECURITY DEPOSIT  
LEASE PAYMENT INCLUDES FREIGHT AND P.D.E.



### 2006 MAZDASPEED6

A turbocharged, direct-injected 274-hp engine and AWD drive-train make MAZDASPEED6 simply the most powerful, best handling sedan we've ever built.

STARTING FROM

**\$35,995\*\*** -OR- **\$419\*** -AT- **4.9%** APR

PER MONTH/48 MONTHS WITH \$4,995 DOWN PAYMENT

NO SECURITY DEPOSIT  
LEASE PAYMENT INCLUDES FREIGHT AND P.D.E.



**mazda**

EXPERIENCE **EMOTION IN MOTION** AT YOUR LOCAL MAZDA DEALER.

To locate a dealer near you, visit [www.mazda.ca](http://www.mazda.ca) or call 1-800-263-4680.

**READY TO ROLL** 52 POINT PRE-DELIVERY INSPECTION • ROADSIDE ASSISTANCE PROGRAM • MAZDA LEADERSHIP WARRANTY • ASK ABOUT OUR OUTSTANDING COMPREHENSIVE AND POWERTRAIN WARRANTY COVERAGE  
ASK ABOUT OUR LOYALTY OFFERS FOR EXISTING MAZDA CUSTOMERS. GRADUATES GET AN ADDITIONAL CASH AWARD OF UP TO \$1,000 TOWARDS A PURCHASE OR LEASE.

† 2.9% Purchase Financing 60 months is available on all new 2006 Mazda6. Based on a representative agreement using an MSRP of \$24,895 for the 2006 Mazda6 GS-I4 AT with a financed amount of \$20,000 the C.O.B. for a 60 month term is \$1,509.14, using an MSRP of \$26,595 for the 2006 Mazda6 Sport hatchback with a financed amount of \$25,000 the C.O.B. for a 60 month term is \$1,886.43, using an MSRP of \$28,195 for the 2006 Mazda6 Sport Wagon with a financed amount of \$25,000 the C.O.B. for a 60 month term is \$1,886.43. A \$65 PPSA registration fee is applied to all Purchase Financing transactions. \*Offers available on retail leases of new 2006 Mazda6 Sedan GS-I4 Automatic Transmission, 2006 Mazda6 Sport hatchback GS-I4 Automatic Transmission, 2006 Mazda6 Sport Wagon GS-V6 Automatic Transmission, and 2006 MAZDASPEED6. Total lease obligation for the 2006 Mazda6 Sedan GS-I4 Automatic Transmission (G4SD86AA00) is \$9,431 including down payment of \$3,695. Total lease obligation for the 2006 MAZDASPEED6 (G4MS568C00) is \$25,093 including down payment of \$4,995. For other models see your dealer for details. Lease payment includes freight and P.D.E. of \$1,195 for cars, PPSA registration fee of \$34.19 for a 24 month term and \$51.31 for a 48 month term extra. \*\*Starting MSRP available on new 2006 MAZDASPEED6 (G4MS568C00). Excludes freight and P.D.E. of \$1,195. Don't even think about a security deposit. It'd just mean more paperwork for us. And besides: we like you. 20,000 km per year mileage allowance applies; if exceeded, additional 8¢ per km applies. 25,000 km leases also available. Licence, insurance, taxes and other dealer charges extra. Dealer may sell/lease for less. Limited quantities available. Dealer order or trade may be necessary on certain vehicles. Offers available from February 1, 2006 for a limited time only. Lease and Finance D.A.C. for qualified customers only. See your dealer for details. \*Offer only available February 11, 2006 - February 28, 2006 at participating Mazda dealers. \$200 worth of free gas applies to the retail purchase or lease of any new 2006 Mazda6 from a participating Mazda dealer between Feb. 11, 2006 - Feb. 28, 2006. Offer also valid with test-drive of any new 2006 Mazda6 and retail purchase or lease of any new 2006 Toyota Camry/Honda Accord/Nissan Altima. Customers who purchase or lease a Camry/Altima must: 1) Test-drive a 2006 Mazda6 at a participating Mazda dealer prior to purchase or lease of Camry/Altima. 2) Submit an original completed 2006 Mazda6 test-drive form (no photocopies), along with a copy of a valid signed 2006 Camry/Altima unconditional purchase or lease contract. Camry/Altima purchase or lease contract must be dated between Feb. 11, 2006 - Feb. 28, 2006. All submissions must be postmarked no later than March 17, 2006. Eligible consumers will receive a Petro-Canada gas card containing \$200 worth of credits that can be used at participating stations. Gas card expires approximately 24 months from vehicle purchase. Offer does not apply to vehicle orders or trades and is not available to commercial fleets. See your local Mazda dealer for specific offer details.

