



**2006 Corolla CE**

LEASE FOR **\$229\*** @ **4.9%** APR | **\$17,725 MSRP**  
PER MONTH FOR 48 MONTHS WITH \$2,222 DOWN. FREIGHT AND P.D.E. INCLUDED

- 1.8 L, 126 hp engine • 5-speed manual transmission
- A/C • AM/FM stereo CD • Power locks and mirrors
- Keyless entry & more

FUEL CONSUMPTION:  
 HWY 5.3L/100 KM (53 MPG) †  
 CITY 7.1L/100 KM (40 MPG) †

MILTON  TOYOTA

**START SMART**

EINSTEIN MAY HAVE SPLIT  
**THE ATOM.**  
 BUT YOU NEVER SAW HIM  
*get* **53 MPG.**  
(5.3L/100 KM)†



**2006 Yaris CE**

LEASE FOR **\$189\*** @ **6.2%** APR | **\$13,580 MSRP**  
PER MONTH FOR 60 MONTHS WITH \$923 DOWN. FREIGHT AND P.D.E. INCLUDED

- 1.5 L, 106 hp engine • 5-speed manual transmission • Power assisted brakes • Driver and passenger airbag supplemental restraint system (SRS) • AM/FM stereo CD & more

FUEL CONSUMPTION: HWY 5.5L/100 KM (51 MPG) † CITY 6.9L/100 KM (41 MPG) †

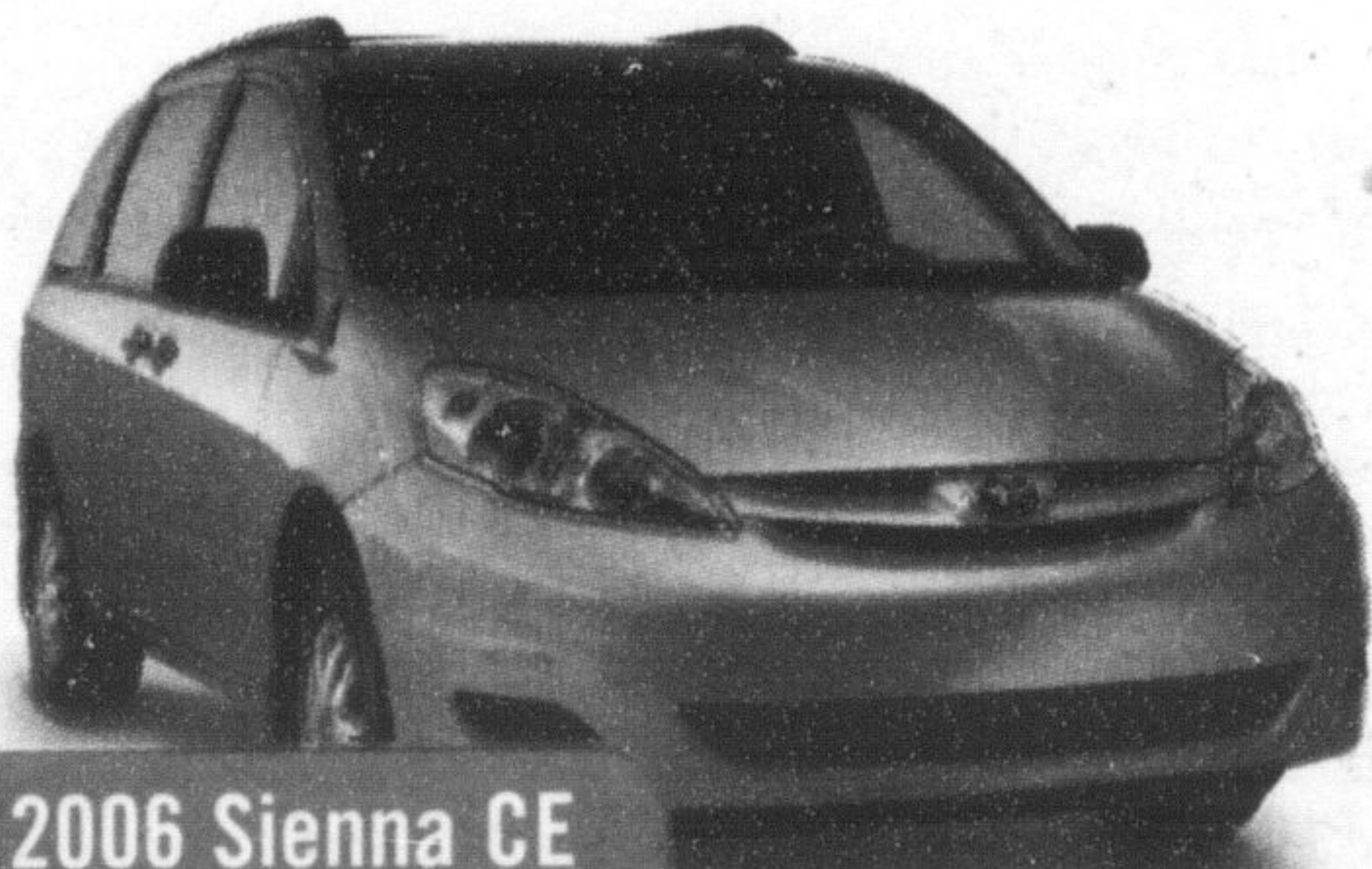


**2006 Camry LE**

LEASE FOR **\$319\*** @ **4.9%** APR | **\$24,990 MSRP**  
PER MONTH FOR 48 MONTHS WITH \$2,550 DOWN. FREIGHT AND P.D.E. INCLUDED

- 2.4 L, 154 hp engine • 5-speed automatic transmission • A/C • Power windows, locks and mirrors • Keyless entry with trunk release • AM/FM stereo CD & more

FUEL CONSUMPTION: HWY 6.4L/100 KM (44 MPG) † CITY 10.0L/100 KM (28 MPG) †

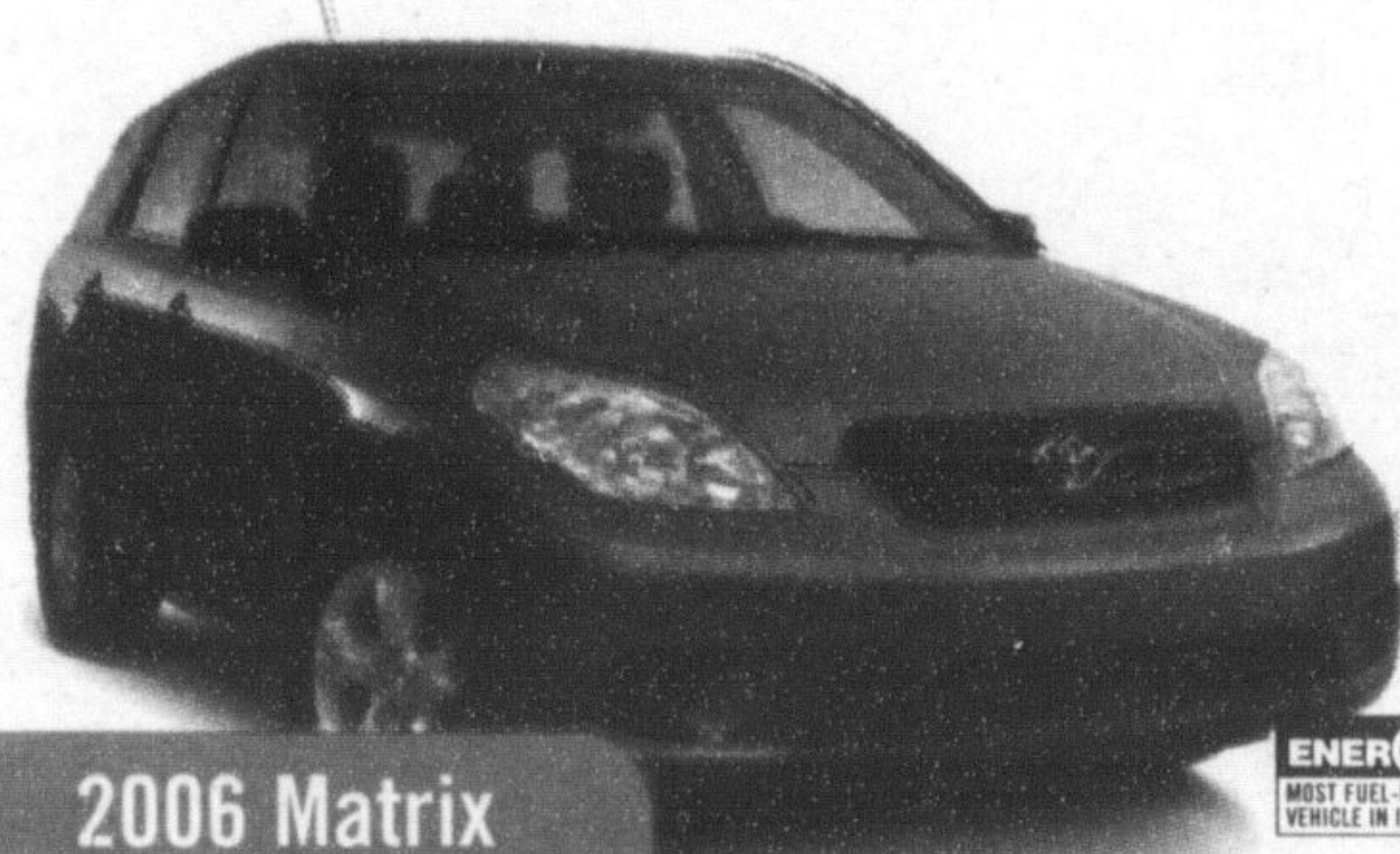


**2006 Sienna CE**

LEASE FOR **\$399\*** @ **5.2%** APR | **\$30,800 MSRP**  
PER MONTH FOR 48 MONTHS WITH \$3,515 DOWN. FREIGHT AND P.D.E. INCLUDED

- 3.3 L, 215 hp engine • 5-speed automatic transmission • ABS • A/C • Power windows, locks and mirrors • Dual sliding doors • Front seat, side and curtain airbags • Keyless entry & more

FUEL CONSUMPTION: HWY 8.2L/100 KM (34 MPG) † CITY 12.4L/100 KM (23 MPG) †

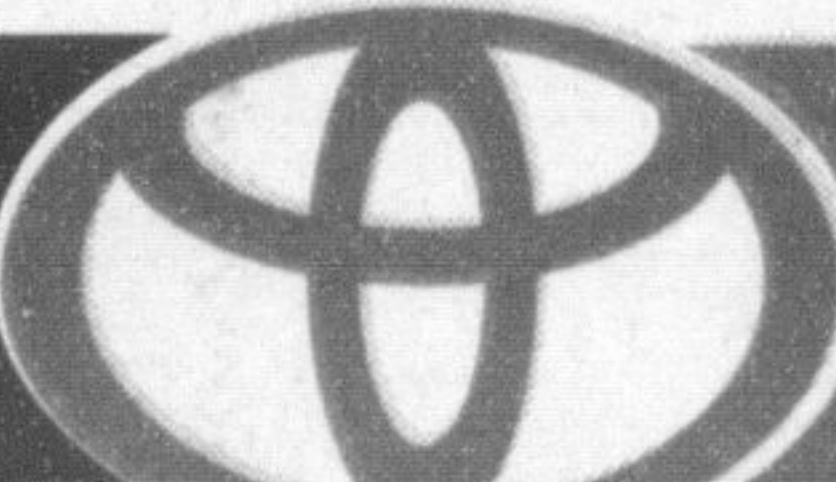


**2006 Matrix**

LEASE FOR **\$259\*** @ **5.5%** APR | **\$19,905 MSRP**  
PER MONTH FOR 48 MONTHS WITH \$2,425 DOWN. FREIGHT AND P.D.E. INCLUDED

- 1.8 L, 126 hp engine • 5-speed manual transmission • A/C • Keyless entry with hatch release • AM/FM stereo CD • 16" aluminum alloy wheels & more

FUEL CONSUMPTION: HWY 5.9L/100 KM (48 MPG) † CITY 7.9L/100 KM (36 MPG) †

MILTON  TOYOTA

**400 Steeles Avenue**

**1-800-617-4025**

[www.milontoyota.com](http://www.milontoyota.com)

**We've got a new look**

*Check out your redesigned community newspaper*

After much consultation and anticipation, The Champion's long-awaited revamp is finally here.

In your hands you're holding the new and improved Champion, designed to make its reading easier and more enjoyable. We're hoping readers will be pleasantly surprised with the changes, some of which are obvious, some more subtle.

With a circulation now up to 21,261, it's important that The Champion evolve along with the burgeoning community it serves.

"As the community expands, we need to expand our coverage," said associate publisher Neil Oliver.

He added a paper should be fluid, not static.

"I think we're constantly looking to evolve to give a better product to our readers," he said.

Included in the changes are a new banner — the paper's logo on the front page — and a condensed font, leaving more white space and giving your eyes a break.

Photos will now be separated from unrelated stories by a thinner line, and the opinion page will have a more eye-pleasing campaign.

The cartoon will be smaller, and new features will include the 'Faces of Milton' photo spread.

Also, to update the style of our stories, the traditional Mr. and Ms will be eliminated.

"We hope they'll (readers) be as pleased as we are with the new look," Mr. Oliver said, adding readers' input is valued.

The Champion has a rich history as one of Canada's oldest community newspapers, and we'll continue to respect its roots. But we also need to embrace the future, and that's what these changes are meant to accomplish.

**We're unlocking the secrets of heart disease one door at a time.**



**February is Heart Month.**

Please give.

Finding answers. For life.

**THUMBS UP!**



Whatever you're after, just thumb through the Classifieds and you'll be good to go! That's all there is to it!

The Canadian **Champion**

905-878-2341  
 875 Main Street, Milton

Classified@miltoncanadianchampion.com

\*Leasing plans from Toyota Financial Services. O.A.C. Offers valid on 2006 Corolla (Model BK233M), 2006 Yaris (Model J1923M), 2006 Camry (Model BK233M), 2006 Sienna (Model BK233M) and 2006 Matrix (Model BK233M). Freight, and P.D.E. not included in MSRP. Based on 60 mos. lease rate 6.2% APR on 2006 Yaris. Based on 48 mos. lease rate of 4.9% APR on 2006 Corolla. 2006 Camry 5.2% APR on 2006 Sienna and 5.5% APR on 2006 Matrix. License, registration fees, insurance and taxes extra. Lease includes freight and P.D.E. cost of \$1,060/\$1,010/\$1,160/\$1,310/\$1,050. Down payment or trade equivalent of \$2,222/\$2,550/\$3,515/\$2,425. First payment and security deposit of \$2,725/\$2,975/\$4,750/\$3,000 due at lease inception. Total lease obligation of \$13,213.65/\$12,262.87/\$17,868.03/\$22,666.80/\$14,857.53 and purchase option price of \$7,976.25/\$5,796.20/\$11,745.30/\$11,862.45/\$9,156.30 based on a maximum of 96,000 kms. Additional km charge of \$0.07/0.10/0.07 if applicable. MSRP valid on Corolla (Model BK233M), 2006 Yaris (Model J1923M), 2006 Camry (Model BK233M) and 2006 Matrix (Model BK233M) of \$17,725/\$11,580/\$24,990/\$19,905. Freight and P.D.E. cost of \$1,060/\$1,010/\$1,160/\$1,310/\$1,050. License, registration fees, insurance and taxes extra. †† Based on 2006 Fuel Consumption Guide ratings published by Natural Resources Canada. † These estimates are based on the Government of Canada's approved criteria and testing methods. Use for comparison purposes only. The actual fuel consumption of these vehicles may vary based on usage and accessories. Refer to the Government of Canada publication FuelGuide - Fuel Consumption Guide. These are locked lease offers. Please see your participating Toyota Dealer for complete details. Dealer may sell/lease for less.