



Attention ALL Vehicle Buyers!

Hunt

Chrysler Jeep



WE WILL GET YOU OUT OF YOUR LEASE

TIME IS RUNNING OUT!

Right NOW!

IF YOUR CHRYSLER FINANCIAL LEASE EXPIRES BEFORE SEPTEMBER 30, 2006

WE WILL WAIVE ALL REMAINING PAYMENTS

NO MATTER WHERE YOU LEASED FROM WITH NO PENALTY.

WE WANT THEM ALL

REGARDLESS OF OVER MILEAGE, BODY DAMAGE, BUMPS OR SCRATCHES.

SEE US TODAY!

WANTED

Good People With Bad Credit.

Let Hunt Chrysler Help Reestablish Your Credit!

• Bankruptcy • Divorce • Poor Credit • Disability/Pension

WE CAN HELP!!

You Could Be Driving ... A New Vehicle TODAY!

*Some downpayment required, depending on credit history. Interest rate may vary from 0% to up to 29.9%.

CHECK OUT THESE PRE-OWNED VEHICLES

'05 CHRYSLER P.T. CRUISER



4dr, almond, 25,000 km. StkP3083 **\$15,495**

'05 CHRYSLER 300



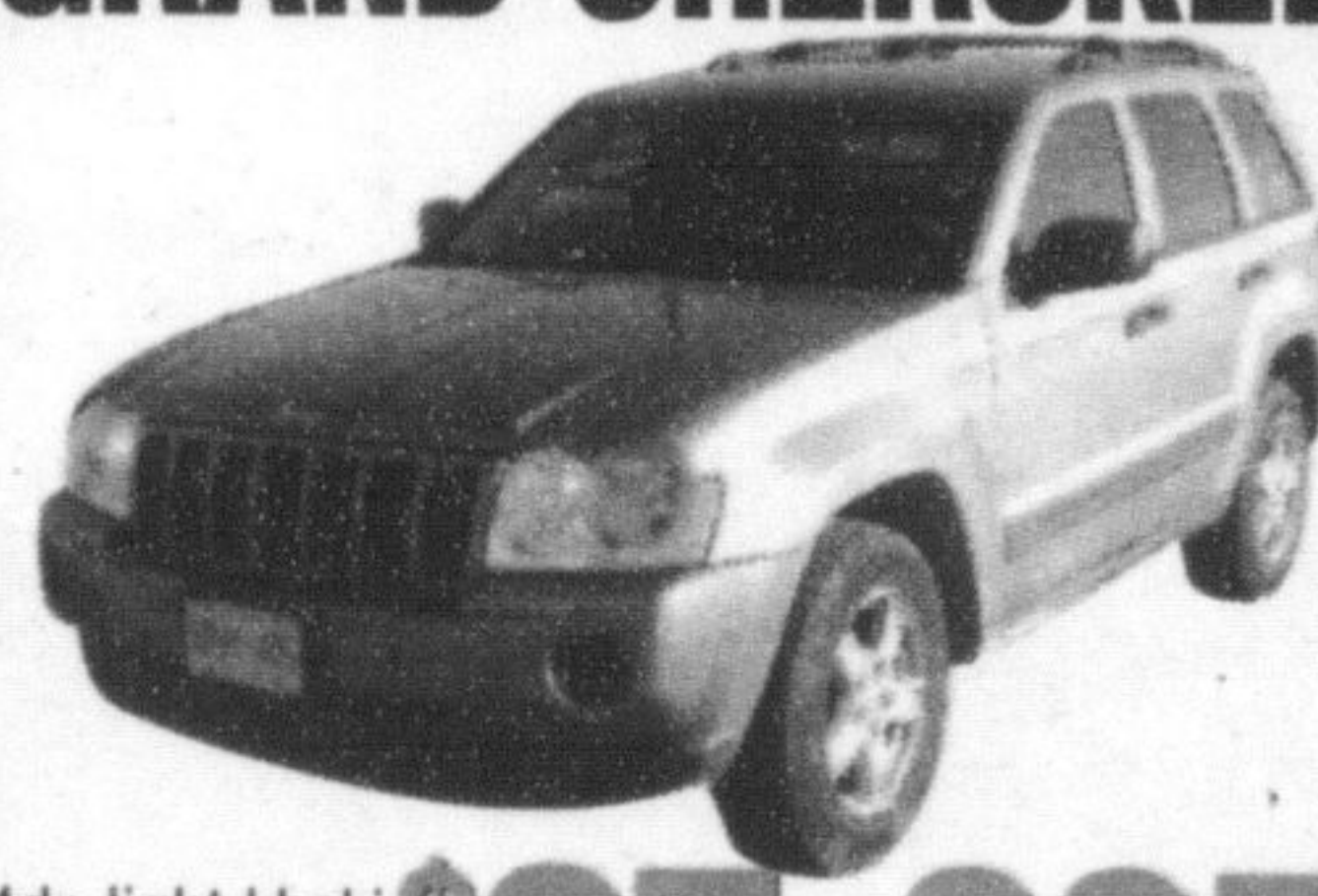
4dr, blue, 26,000 kms. StkP3143 **\$23,995**

'05 CHRYSLER PACIFICA



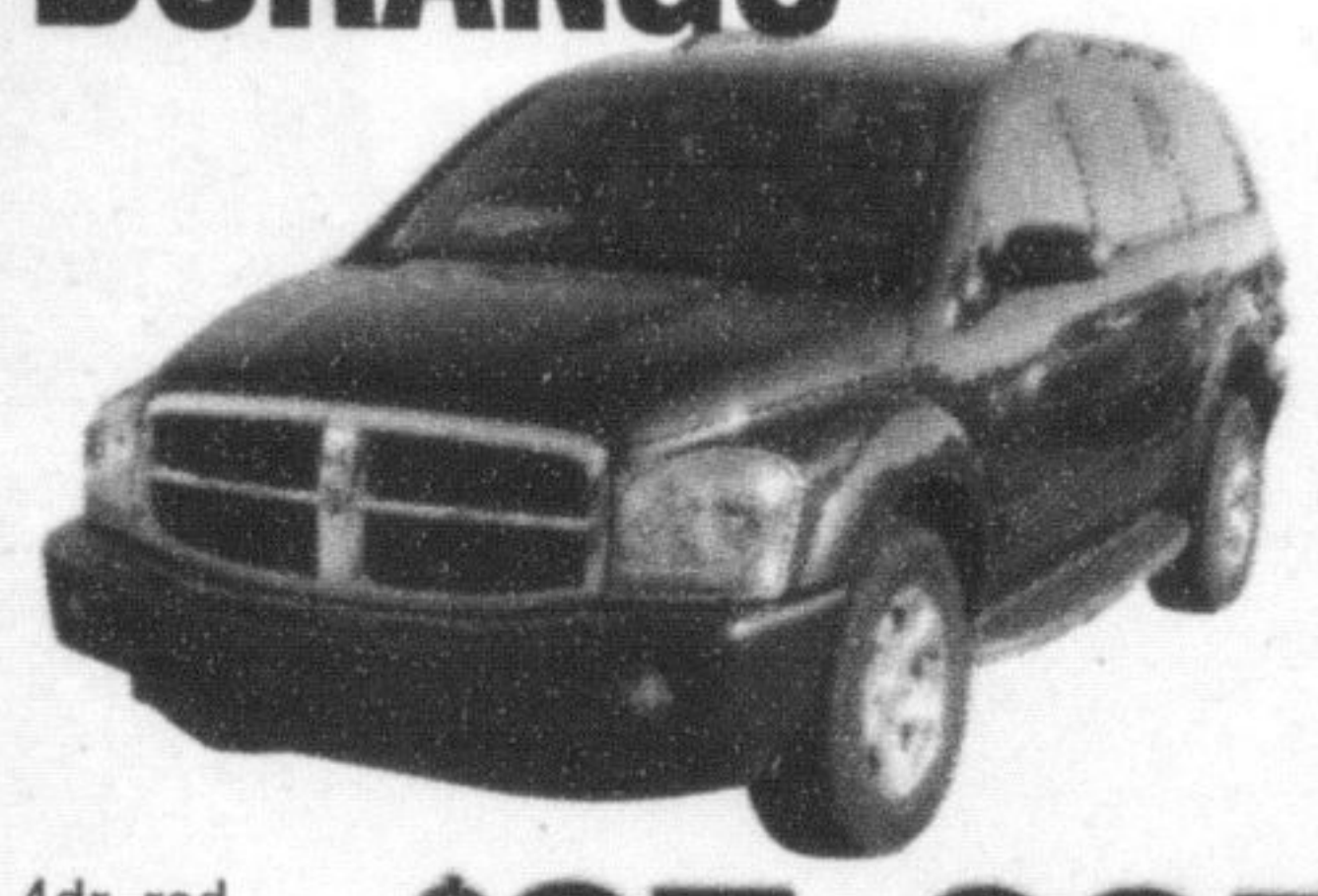
Wagon, green, 17,700 km. StkP3148 **\$26,995**

'05 JEEP GRAND CHEROKEE



4dr, light khaki, 24,600 km. StkP3151 **\$27,995**

'05 DODGE DURANGO



4dr, red, 27,400 km. StkP3154 **\$27,995**

'05 CHRYSLER SEBRING



4dr, grey, 23,000 km. StkP3163 **\$16,995**

'04 CHRYSLER P.T. CRUISER



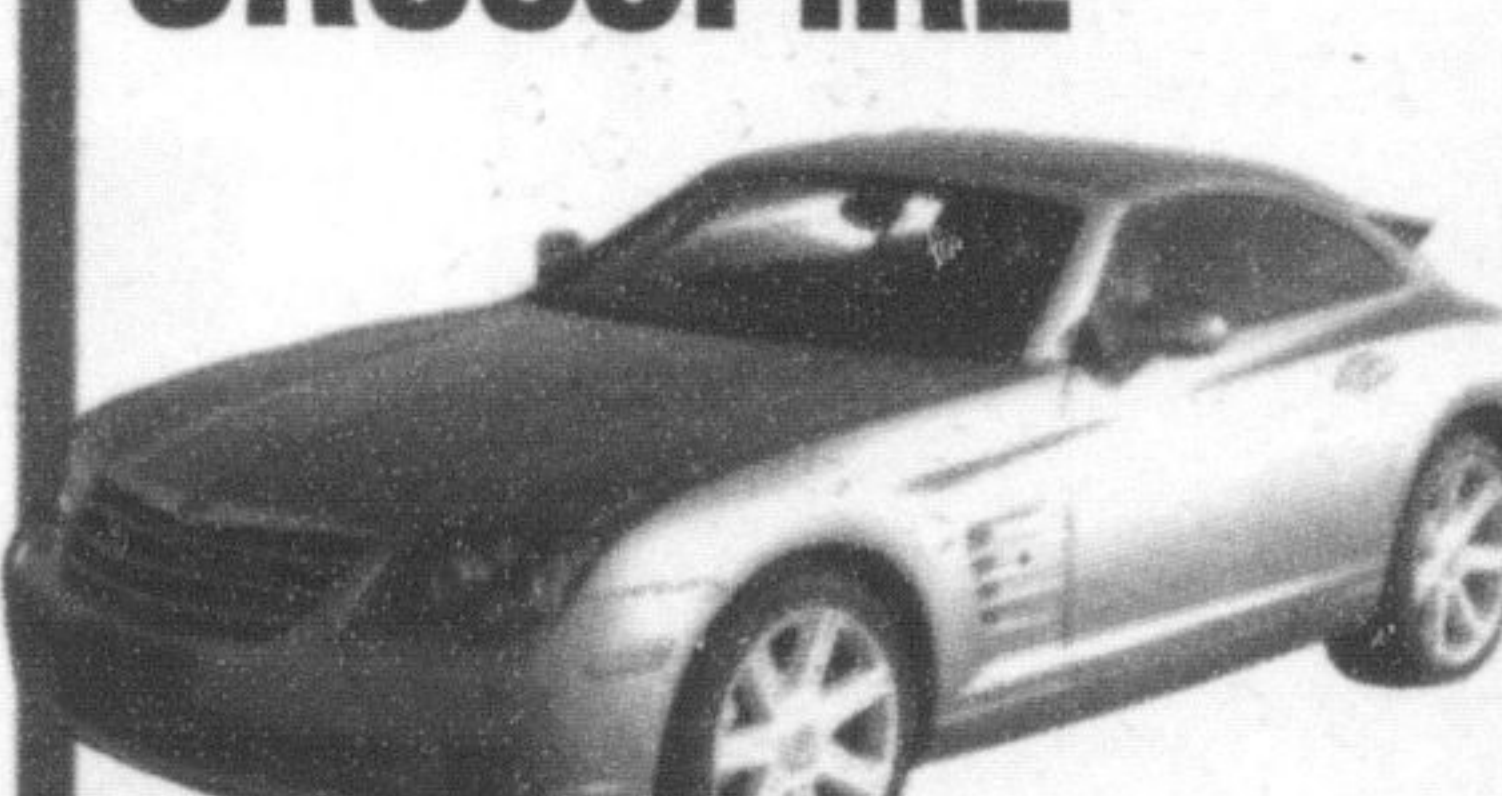
4dr, silver, 36,000 km. StkP3043 **\$13,995**

'04 CHRYSLER JEEP LIBERTY



Wagon, silver, 33,000 km. StkUG19-1 **\$18,995**

'04 CHRYSLER CROSSFIRE



2dr, silver blue, Stk. P3146

'03 DODGE DAKOTA CLUB



Pick-up, blue, 113,000 km. StkUT157-1 **\$12,995**

Hunt

Chrysler Jeep

Your **RIVE STAR** Dealership



500 BRONTE ST. S.

www.huntchrysler.ca

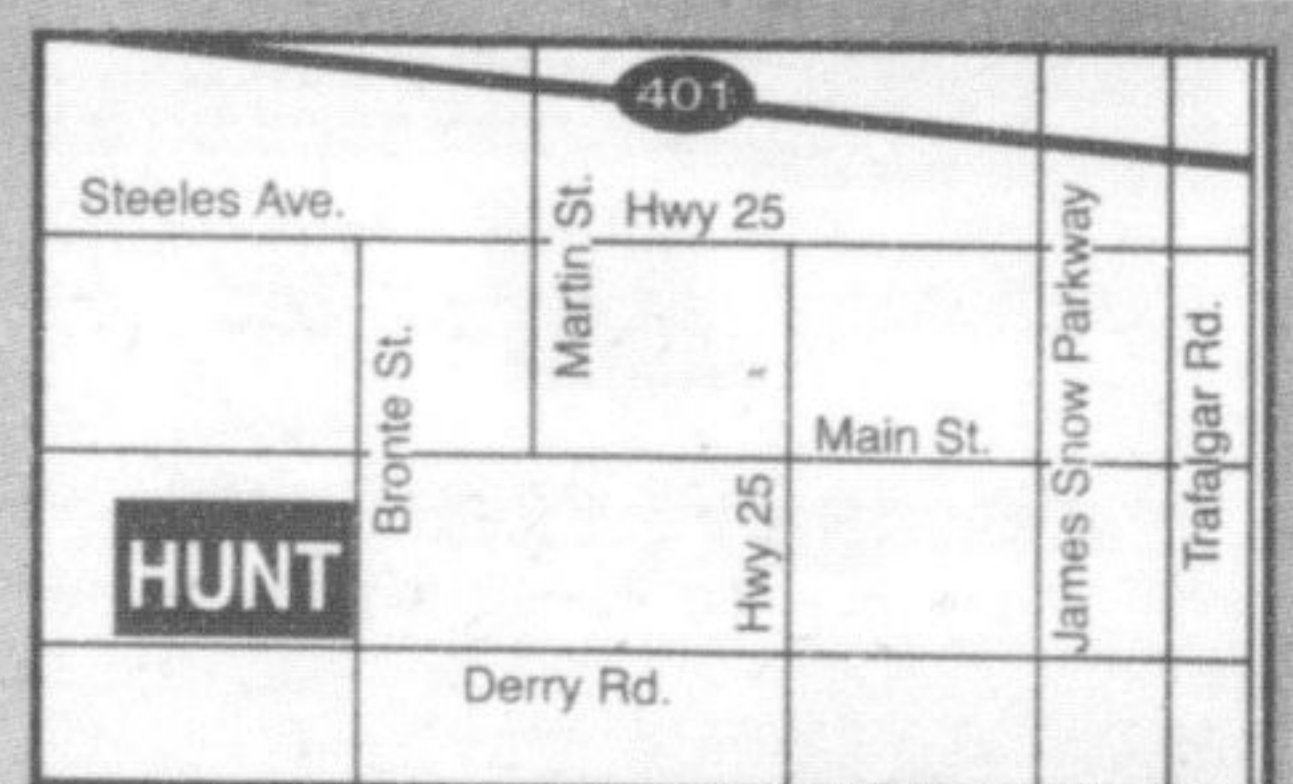
SERVICE/PARTS: www.huntchrysler.com

Milton:
Toll Free:
Email:

(905) 876-2580
1-866-848-8816

sales@huntchrysler.com

SALES: Mon-Thurs 9-9, Fri. 9-6, Sat. 9-5
SERVICE: Mon-Fri 8-5, Tues. 8-8, Sat. 8-12



Daimler Chrysler will waive all your payments on your new lease from Chrysler Financial up to September 30, 2006. Conditions: You must lease or finance a new 2005 or 2006 model Chrysler Jeep Dodge Jeep vehicle with Chrysler Financial. Customer to honour all contractual lease obligations including past due payments, excess, wear and tear charges and pro rated excess km obligations. This limited time offer deal is conditional to qualifying for the lease pull ahead program. See dealer for details.

FINANCING PROVIDED BY
Chrysler Financial