

Federal help centre now open

Newly-elected Halton MP Garth Turner opened a help centre last week that'll assist residents with everything from passports to pension cheques.

The new facility, located in the downtown core, will aid area citizens in accessing federal government services.

The MP Help Centre is located at 86 Main St.

The initial office hours are 11 a.m. to 9 p.m. Monday through Friday and 11 a.m. to 6 p.m. Saturday.

Hours may change as new staff is brought in to assist constituents.

The centre's services are also being provided by phone and over the Internet.

The centre can be reached at (905) 875-0769, and service resources are also available at www.garth.ca.

"As most homes in this riding have high-speed Internet access, it just makes sense to provide as much as possible through that channel," Mr. Turner said.

"Halton residents will see a steady roll-out of on-line features over the next few weeks and months, including the ability to vote on important issues, right along with their member of Parliament. I look forward to giving people here a strong, strong voice in their government."

Single car crash claims driver

A Friday morning collision on Lower Base Line has claimed the life of a 59-year-old Etobicoke man.

Just before noon, a vehicle was traveling westbound on Lower Base Line between Trafalgar Road and Sixth Line when, for unknown reasons, the vehicle crossed the centre line, police said. It landed in the south ditch and collided with a tree.

Police and Halton EMS found the victim, the only person in the vehicle, with no vital signs. He was extricated from the car and EMS unsuccessfully attempted to revive him.

The identity of the man hasn't been released pending notification of next of kin.

Halton Regional Police is continuing to investigate the incident and is asking any motorists in the area who saw the collision to call (905) 825-4777, (905) 878-5511, ext. 2405, or Crime Stoppers at 1-800-222-TIPS (8477).

Neo Centrix Salon and Spa

FULL HAIR & ESTHETIC SERVICES

February's Specials

10% OFF
All Waxing

Pedicure only
\$38.00

Mini Yonka FACIAL w/blow dry
\$55.00

NEW CLIENTS! Colour/Cut & Style

\$69.00 With Shannon or Jane

17 Wilson Drive • Main & Wilson, Milton
(905) 693-0878

Tues 9-7, Wed 9-8, Thurs 9-9, Fri 9-7, Sat 9-3, Sun & Mon Closed

Wallace

PONTIAC • BUICK • CADILLAC

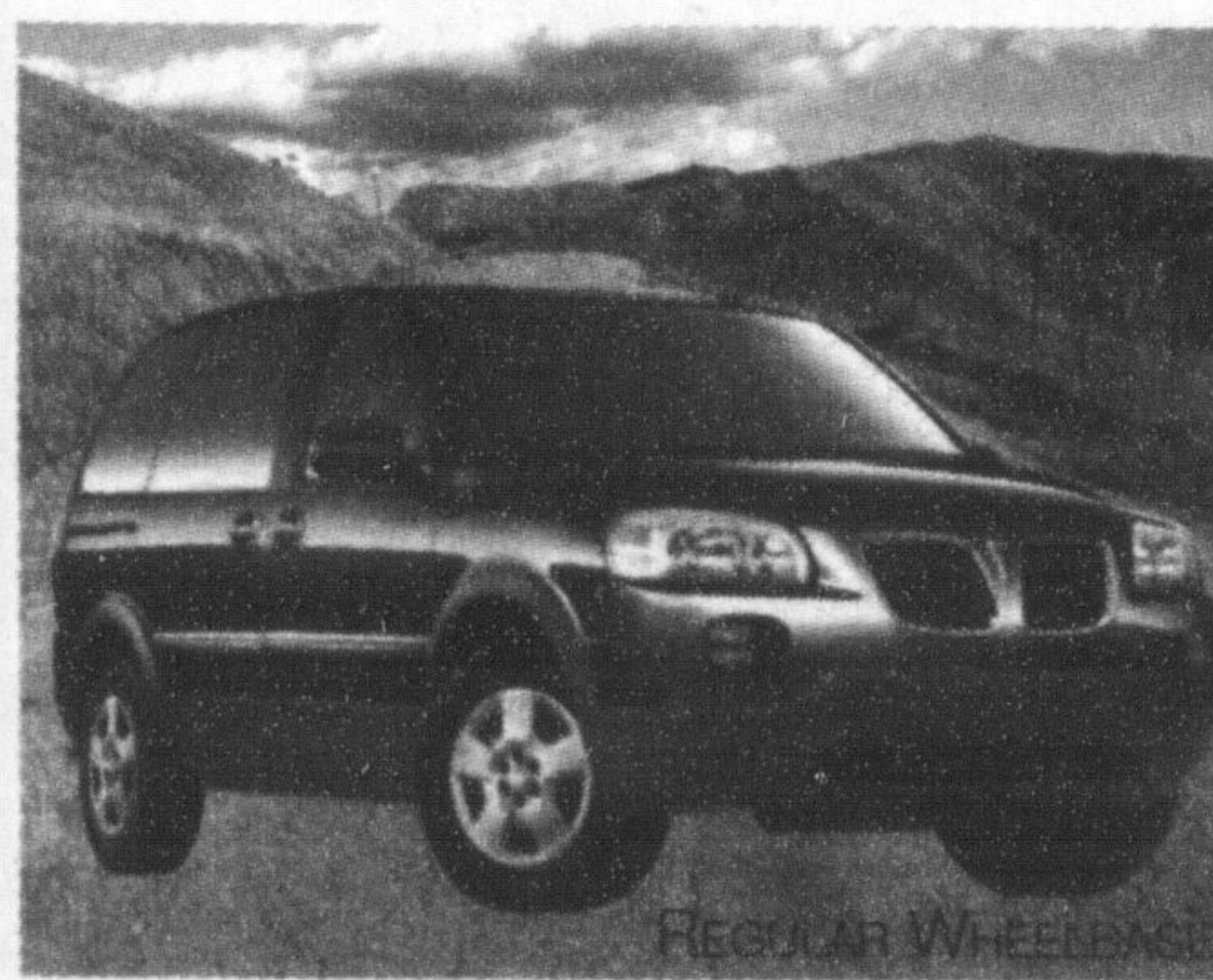
2006 Pontiac Torrent



- 3.4L 185 hp V6 Engine
- 5-Speed Automatic Transmission
- Air Conditioning • 6-Speaker CD Stereo
- 16" Aluminum Wheels
- Remote Keyless Entry
- Multi-flex™ Seating - 60/40 Split Folding, Reclining and Sliding Bench (with 8" of travel)
- Fold Flat Front Passenger Seat
- Multi-level Cargo Area with
- Removable Panels
- Fog Lamps

\$278*
SMARTLEASE PER MONTH

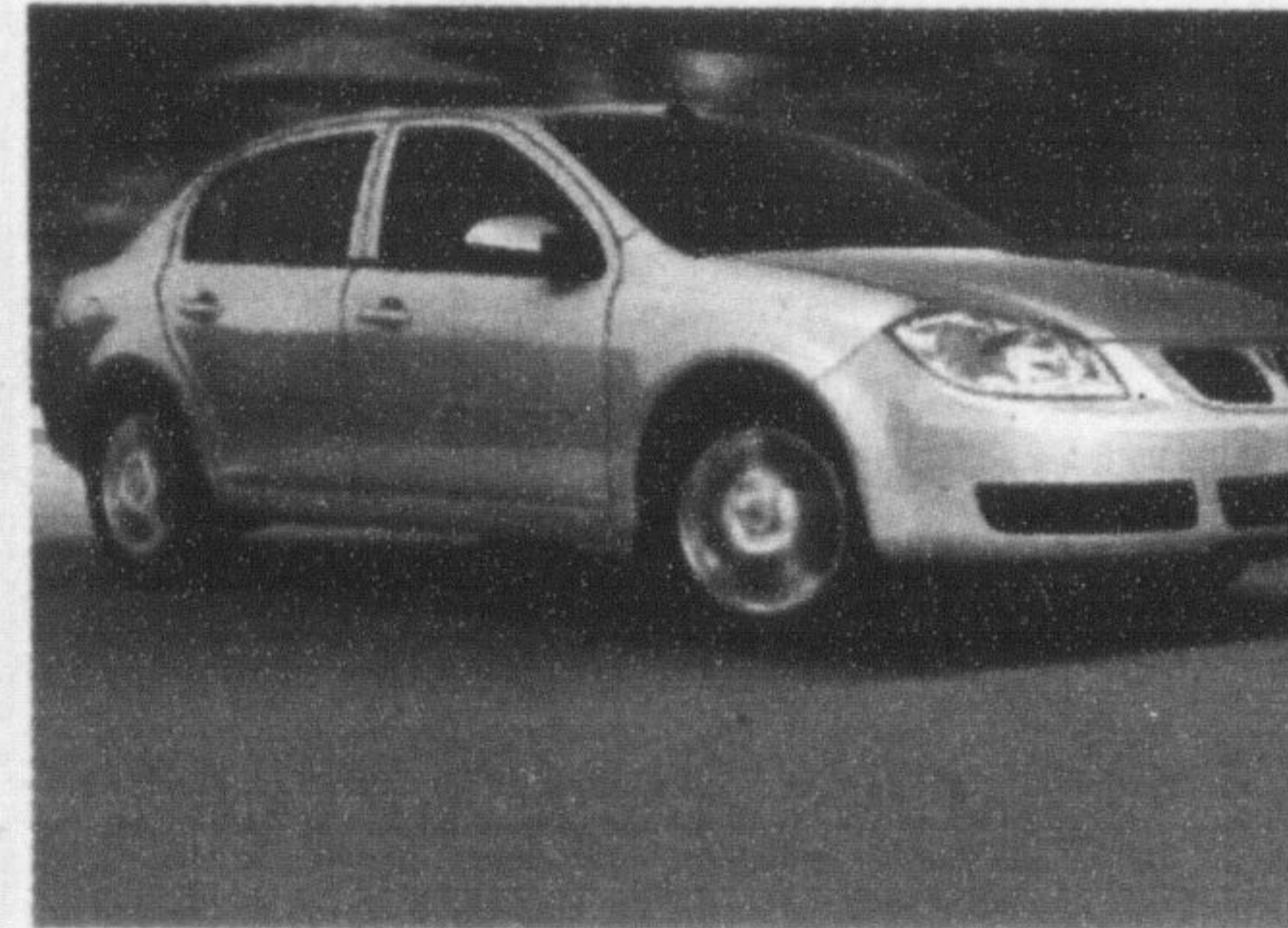
2006 Pontiac Montana SV6



- 3.5L 201HP SFI engine
- 4-wheel disc brakes with ABS
- OnStar™ with 1-year Safe & Sound Plan
- A/C • CD/MP2 player
- 17" wheels • Remote keyless entry
- Power windows/locks/mirrors
- Deep tint glass
- Front row captain's chairs
- 50/50 split, fold flat, removable 3rd row seats
- 5-year/100,000km GM Powertrain Warranty with \$0 deductible

\$198*
SMARTLEASE PER MONTH

2006 Pontiac Pursuit Sedan



- 2.2L 145-HP ECOTEC Engine
- 5-speed Getrag manual transmission
- CD stereo
- 15" wheels
- Spoiler
- 60/40 split folding rear seat
- 5-year/100,000km GM Powertrain Warranty with \$0 deductible

\$164*
SMARTLEASE PER MONTH

2006 Pontiac Grand Prix



- 3.8L 200 HP V6 engine
- 16" polished aluminum wheels
- Dual exhaust
- 6-way power driver's seat
- Remote vehicle start
- Leather wrapped steering wheel with radio controls
- Fog Lamps

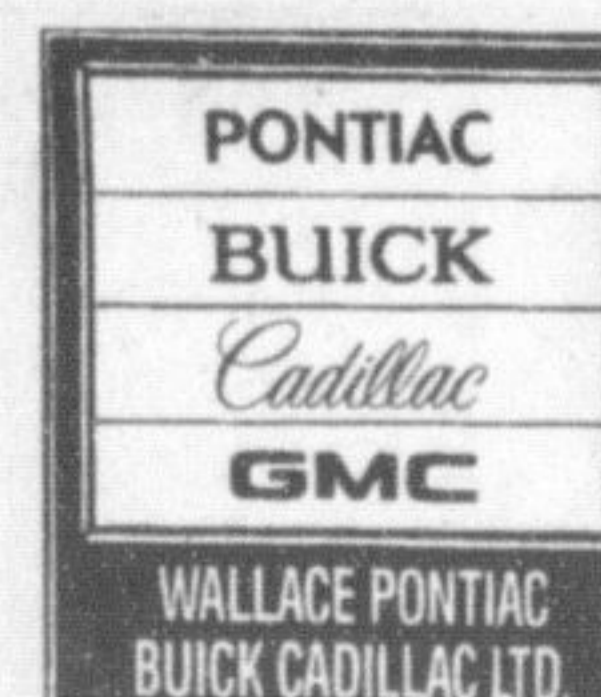
\$265*
SMARTLEASE PER MONTH

2006 GMC Sierra Wrangler Crew Cab



- Vortec 4800 285 HP V8 Engine
- Automatic transmission with overdrive
- 4-wheel ABS
- 17" wheels
- Dual zone air conditioning
- CD stereo
- 40/20/40 split front bench

\$285*
SMARTLEASE PER MONTH



Wallace
PONTIAC • BUICK • CADILLAC

905-878-2355

801 MAIN ST. E. MILTON

MON. - THURS. 9:00 AM - 8:00 PM
FRI. & SAT. 9:00 AM - 6:00 PM

TOLL FREE 1-888-878-2354

Smartlease are based on 48 mths and include 80,000 km with \$0.12 over and are plus freight, down payment (Torrent 2.9%-\$3635 down-total due \$5852; Montana SV6 4.0%-\$5175 down-total due \$7617; Pursuit MSRP \$17,185-1.5%-\$2455 down-total due \$4299; Grand Prix 1.25%-\$3530 down-total due \$5831; Sierra Wrangler 30 month term 0.5%-\$4575 down-total due \$6969) license and applicable taxes down on approved credit. Cash prices are plus freight, taxes and license. All rebates assigned to dealer. See dealer for complete details. Some conditions and restrictions apply. Full details available from your dealer and at gmcna.com.

La Rose

Fresh Bread and Buns Baked daily 7 days a week!

Italian Bakery and Delicatessen



Weekly Bakery Specials

SAVE! 30¢

Vienna Stick Bread **69¢** ea

Fresh Produce No. 1 Grade

Product of USA
Jumbo Head Lettuce **99¢** ea

Product of USA
Blueberries **\$1.99** Container

Product of USA
Field Tomatoes **99¢** lb

Delicatessen

SUPER SPECIAL

Brandt's Honey Ham **\$3.99** lb OR \$0.88/100g

Vera Mortadella **\$3.99** lb OR \$0.88/100g

Balderson Mild Cheddar Cheese **\$4.99** lb OR \$1.10/100g

Brandt's Kolbassa Coil Extra Lean Ham or Turkey **\$2.99** lb OR \$0.66/100g

SPECIALS IN EFFECT FROM TUESDAY, JANUARY 31ST TO MONDAY, FEBRUARY 6TH, 2006. WHILE QUANTITIES LAST.
327 Bronte Street S. • White Oaks Plaza
905-875-0303

REGULAR STORE HOURS
Mon.-Thurs. 8:30 am - 7 pm
Friday 8:30 am - 8 pm
Saturday 8:30 am - 6 pm
Sunday 9:00 am - 5 pm

Bronte St.
Derry Rd. X Main St.