

# TURN THE CORNER ON WINTER.

Spring ahead. Experience a Mazda test-drive now.

## 2006 MAZDA6 SEDAN GS-I4

5-SPEED AUTOMATIC TRANSMISSION

Bold styling that matches its performance...the kind that's garnered more than 100 international awards.

LEASE FROM  
**\$239\*** - AT - **0%** APR

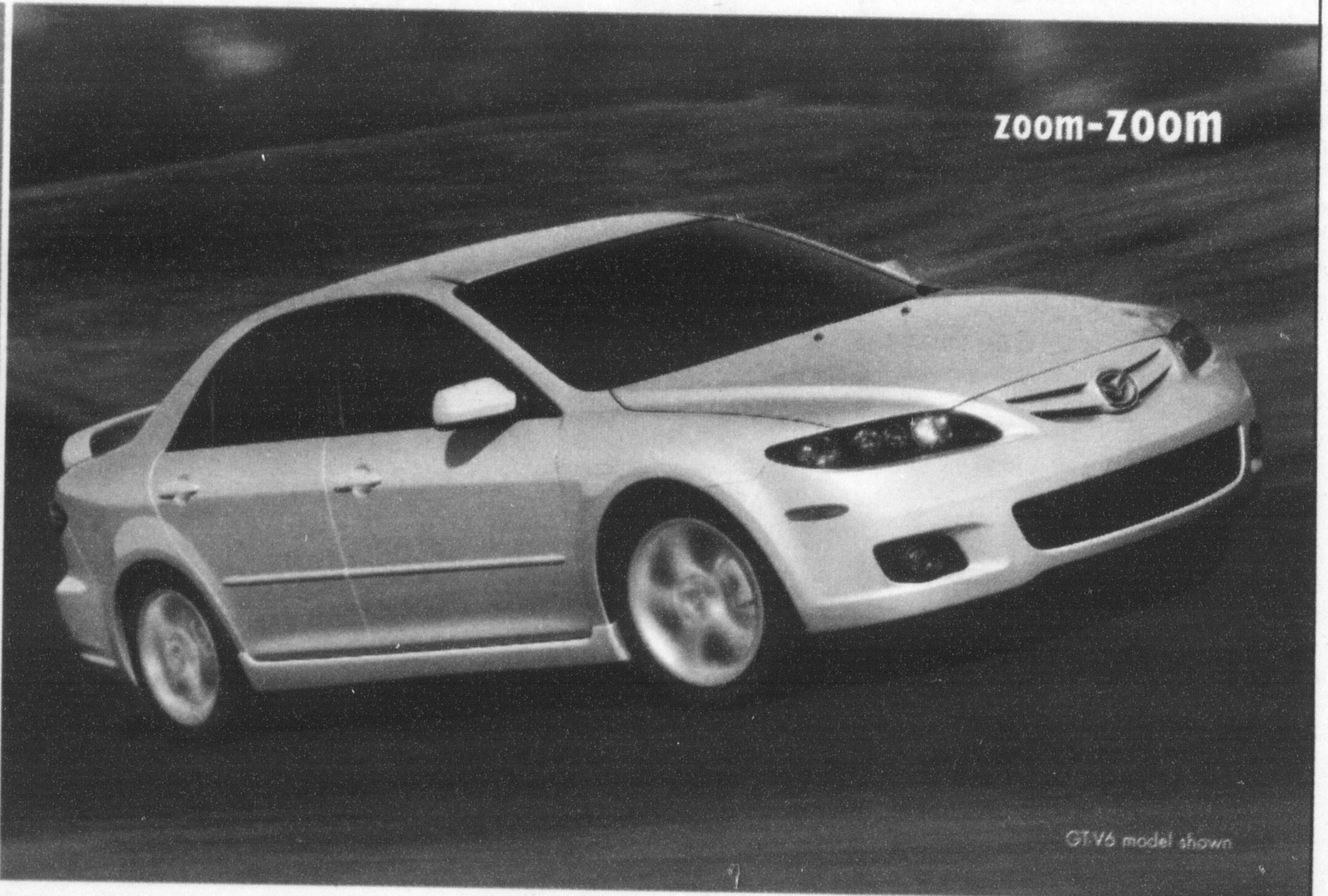
PER MONTH/24 MONTHS  
WITH \$3,695 DOWN PAYMENT

NO SECURITY DEPOSIT  
LEASE PAYMENT INCLUDES FREIGHT AND P.D.E.

- OR -

**2.9%**

PURCHASE FINANCING  
FOR 60 MONTHS†



zoom-ZOOM

GT-V6 model shown



GT-V6 model shown

### 2006 MAZDA6 SPORT HATCHBACK GS-I4

5-SPEED AUTOMATIC TRANSMISSION

The performance and style of the award-winning Mazda6 sedan, enhanced with the versatility of a fifth door.

LEASE FROM  
**\$269\*** - AT - **0%** APR - OR - **2.9%**

PER MONTH/24 MONTHS  
WITH \$3,695 DOWN PAYMENT

PURCHASE FINANCING  
FOR 60 MONTHS†

NO SECURITY DEPOSIT  
LEASE PAYMENT INCLUDES FREIGHT AND P.D.E.



GT-V6 with Performance package model shown

### 2006 MAZDA6 SPORT WAGON GS-V6

AUTOMATIC TRANSMISSION

Get all the power, performance, and handling of the Mazda6 family, plus space and cargo capability that even rivals some SUVs.

LEASE FROM  
**\$279\*** - AT - **0%** APR - OR - **2.9%**

PER MONTH/24 MONTHS  
WITH \$3,795 DOWN PAYMENT

PURCHASE FINANCING  
FOR 60 MONTHS†

NO SECURITY DEPOSIT  
LEASE PAYMENT INCLUDES FREIGHT AND P.D.E.



### 2006 MAZDASPEED6

A turbocharged, fuel-injected 274-hp engine and AWD drive-train make MAZDASPEED6 simply the fastest, best handling sedan we've ever built.

STARTING FROM  
**\$35,995\*\*** - OR - LEASE FROM  
**\$479\*** - AT - **5.9%** APR

PER MONTH/48 MONTHS  
WITH \$4,995 DOWN PAYMENT

NO SECURITY DEPOSIT  
LEASE PAYMENT INCLUDES FREIGHT AND P.D.E.



**mazda**

EXPERIENCE **EMOTION IN MOTION** AT YOUR LOCAL MAZDA DEALER.

To locate a dealer near you, visit [www.mazda.ca](http://www.mazda.ca) or call 1-800-263-4680.

**READY TO ROLL**

52 POINT PRE-DELIVERY INSPECTION • ROADSIDE ASSISTANCE PROGRAM • MAZDA LEADERSHIP WARRANTY • ASK ABOUT OUR OUTSTANDING COMPREHENSIVE AND POWERTRAIN WARRANTY COVERAGE

ASK ABOUT OUR LOYALTY OFFERS FOR EXISTING MAZDA CUSTOMERS. GRADUATES GET AN ADDITIONAL CASH AWARD OF UP TO \$1,000 TOWARDS A PURCHASE OR LEASE.

† 2.9% Purchase Financing 60 months is available on all new 2006 Mazda6 except MAZDASPEED6 - Based on a representative agreement using an MSRP of \$24,895 for the 2006 Mazda6 GS-I4 AT with a financed amount of \$24,895 for a 60 month term is \$1,509.14, using an MSRP of \$26,595 for the 2006 Mazda6 Sport hatchback with a financed amount of \$25,000 the C.O.B. for a 60 month term is \$1,886.43, using an MSRP of \$28,195 for the 2006 Mazda6 Sport Wagon with a financed amount of \$25,000 the C.O.B. for a 60 month term is \$1,886.43. A \$65 PPSA registration fee is applied to all Purchase Financing transactions.  
\*Offers available on retail leases of new 2006 Mazda6 Sedan GS-I4 Automatic Transmission, 2006 Mazda6 Sport hatchback GS-I4 Automatic Transmission, 2006 Mazda6 Sport Wagon GS-V6 Automatic Transmission, and 2006 MAZDASPEED6 with Leather package and moonroof. Total lease obligation for the 2006 Mazda6 Sedan GS-I4 Automatic Transmission (G4SD06AA00) is \$9,431 including down payment of \$3,695. Total lease obligation for the 2006 Mazda6 Sport hatchback GS-I4 Automatic Transmission (G4MS56B1D0) is \$10,151 including down payment of \$3,695. Total lease obligation for the 2006 Mazda6 Sport Wagon GS-V6 Automatic Transmission (G5SD06AA00) is \$10,151 including down payment of \$3,695. Total lease obligation for the 2006 MAZDASPEED6 (G4MS56B1D0) is \$27,987 including down payment of \$4,995. For other models see your dealer for details. Lease payment includes freight and P.D.E. of \$1,195 for cars. PPSA registration fee of \$34.19 for a 24 month term and \$51.31 for a 48 month term extra. \*\*Starting MSRP available on new 2006 MAZDASPEED6 (G4MS56B1D0). Excludes freight and P.D.E. of \$1,195. Don't even think about a security deposit. It'd just mean more paperwork for us. And besides: we like you. 20,000 km per year mileage allowance applies; if exceeded, additional 8¢ per km applies. 25,000 km leases also available. Licence, insurance, taxes and other dealer charges extra. Dealer may sell/lease for less. Limited quantities available. Dealer order or trade may be necessary on certain vehicles. Offers available from January 4, 2006 for a limited time only. Lease and Finance O.A.C. for qualified customers only. See your dealer for details.

