

Local boxer humbled by honour

• from LAFLEUR on page A14

Hawley, Toronto Argos' linebacker Mike O'Shea and former NHLer Kris King, Tuesday's event included special recognition for a couple of local sports figures — former referee Bruce Hood and up-and-coming boxer Matt Hart.

By far the most outspoken and charismatic celebrity of the bunch, Mr. Hood took jabs at the two players he once officiated and couldn't resist breaking out his trusty whistle while Mayor Gord Krantz auctioned off one of his zebra sweaters.

A welterweight with three professional victories under his belt, Mr. Hart was much more reserved — perhaps humbled by being in the presence of one of Canadian boxing's biggest names.

"To meet George Chuvalo and be honoured in this way is great," remarked the 28-year-old, who's set to undergo shoulder surgery sometime next month and hopes to be back in the ring by April or May.

As always, the auction portion of the night featured some spirited bidding, with a pair of framed Lafleur jerseys topping things off at a whopping \$2,000 apiece.

An estimated \$14,000 was raised for the Chamber's Scholarship Fund.

Business without advertising is like winking in the dark ~ You know what you're doing ~ but nobody else does!

OPEN HOUSES

SATURDAY JANUARY 21th

- 2-4 pm, 201 Harvest, \$282,900
Paul Jackson, Royal LePage Meadowtowne Realty, 905-878-8101
- 2-4 pm, 613 Elliott Cres., \$327,900
Kim Scott, Royal LePage Meadowtowne Realty, 905-878-8101
- 2-4 pm, 649 Bennett Blvd., \$345,900
Matthew Clapperton, Royal LePage Meadowtowne Realty, 905-878-8101
- 2-4 pm, 535 Trudeau Dr., \$319,900
Jack Vanderbreggen, Royal LePage Meadowtowne Realty, 905-878-8101
- 2-4 pm, 1530 Evans Terrace, \$279,900
Clayton Hackenbrook, ReMax Real Estate Centre 905-878-7777

SATURDAY JANUARY 22th

- 2-4 pm, 535 Trudeau Dr., \$319,900
Jack Vanderbreggen, Royal LePage Meadowtowne Realty, 905-878-8101
- 2-4 pm, 128 Wilson Dr.
Betty Ingle, ReMax Real Estate Centre 905-878-7777
- 2-4 pm, 1626 Clarke Blvd.
Sandi Kinsale, Royal LePage Meadowtowne Realty, 905-878-8101
- 2-4 pm, 464 Woodlawn Cres., \$265,000
Clayton Hackenbrook, ReMax Real Estate Centre 905-878-7777
- 2-4 pm, 377 Wilson Dr., \$319,900
Joan Hollings, Prudential Town Centre 905-878-9100
- 2-4 pm, 633 Porterr Way
Michelle Penman, Royal LePage Meadowtowne Realty, 905-878-9101

Visit an Open House this Weekend!
Also check the **Weekend Spotlight on Homes & the Regional Page** showcasing more Open Houses and New Listings!

Visit us on the web at www.miltonchrysler.com

THANK YOU
FOR A GREAT 2005 AND ALL THE BEST IN 2006

ALL NEW 2006 JEEP COMMANDER

2.8% FIN 48M



PLUS \$1,000-\$1500 CASH BACK

ALL NEW 2006 DODGE RAM MEGA CAB

0% FIN 48M



PLUS \$1,000 CASH BACK † On Gas Models

ALL NEW 2006 JEEP LIBERTY

NOW IN STOCK WITH TURBO COMMON RAIL DIESEL ENGINE - POWER WITH ECONOMY



UP TO \$3,500 †† CHRYSLER EMPLOYEE E-BONUS

CHRYSLER'S FAMOUS **PULL AHEAD LEASE PROGRAM** IS BACK FOR A LIMITED TIME ONLY!

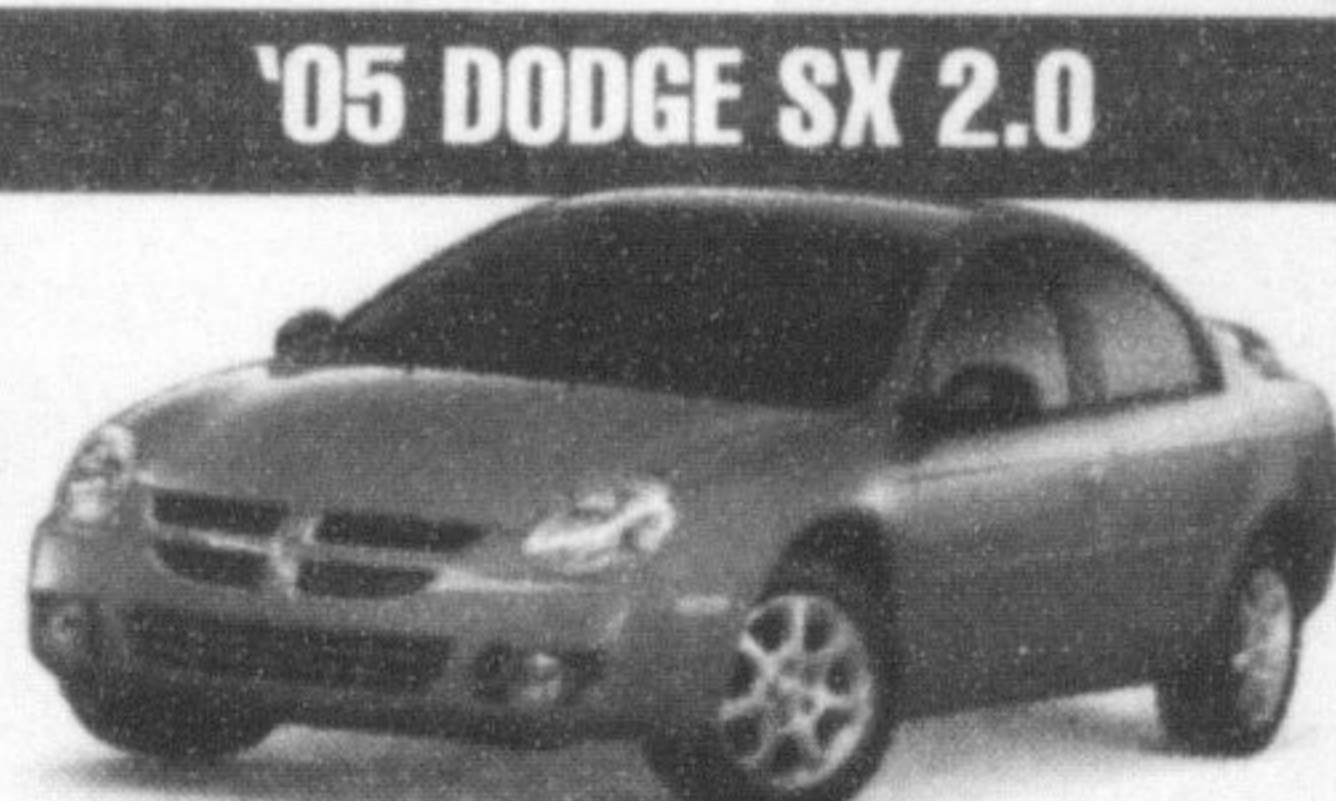


JANUARY 4TH - FEBRUARY 28TH, 2006

NO MATTER where you purchased your last Lease from Milton Chrysler can get you out of your current vehicle and into a **NEW CHRYSLER, DODGE OR JEEP TODAY - with... NO PENALTY!**

If your current lease expires between February 1st and September 30th, 2006, we'll waive all of your remaining payments!

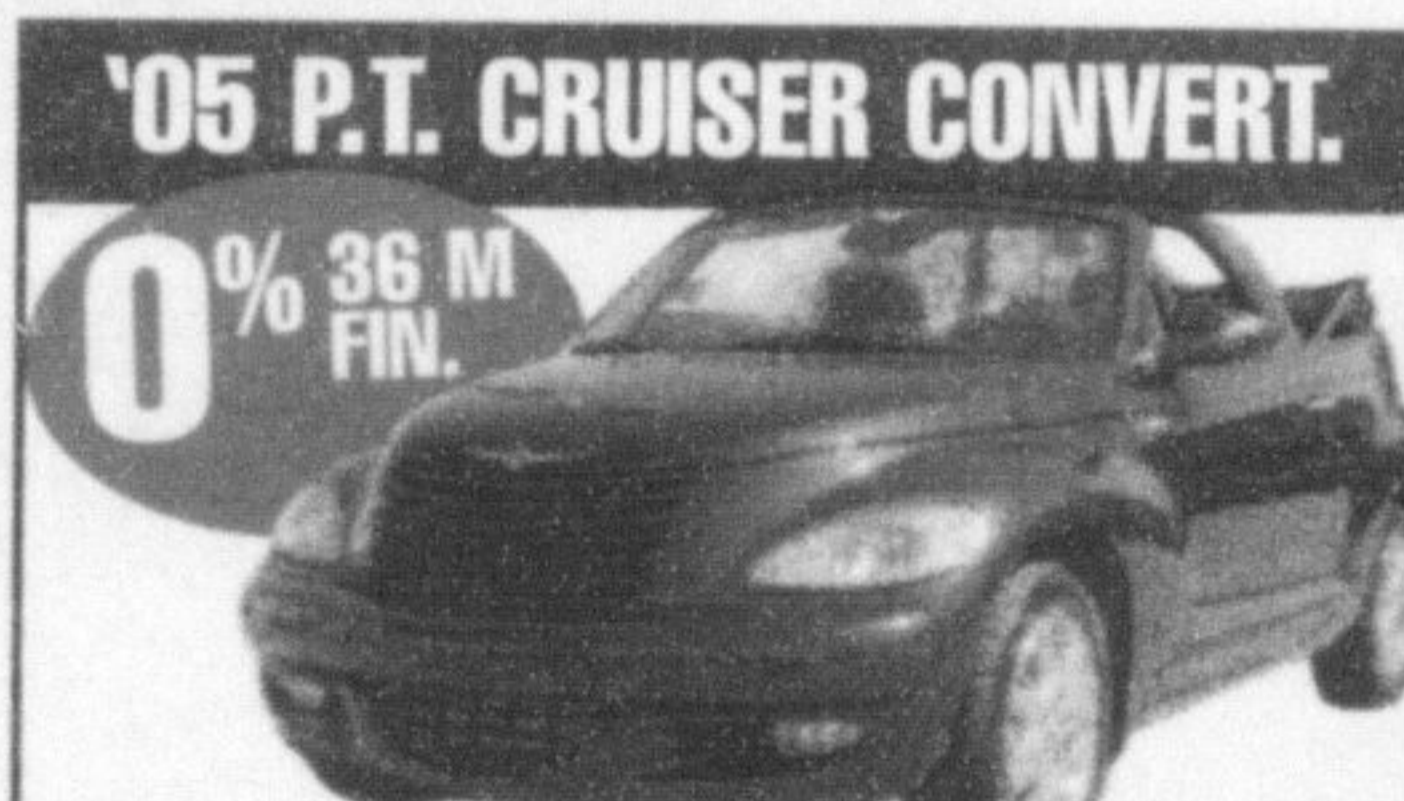
How would you like **LOWER PAYMENTS?** WE CAN DO IT, JUST GIVE US A CALL! **905-878-8877***



'05 DODGE SX 2.0

Auto, air, AM/FM/CD + much more. Stk#270216

CASH PRICE **\$13,999***



'05 P.T. CRUISER CONVERT.

0% 36 M FIN.

2.4 Turbo engine 220 hp, auto, air, leather, AM/FM/CD, chrome wheels, loaded. Stk#248000

\$27,333* CASH PRICE
\$379 PER MTH \$0 DOWN 39M LEASE



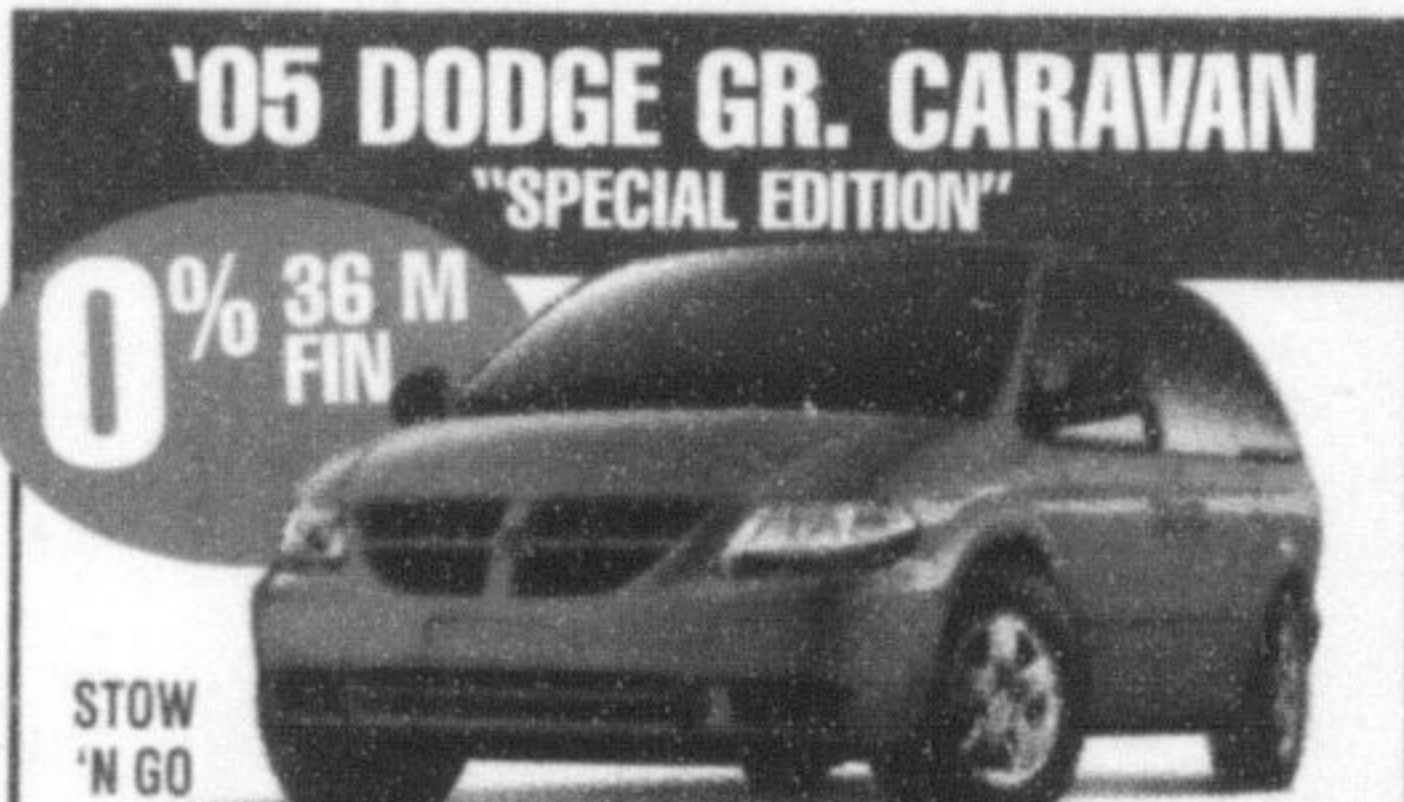
'05 CHRYSLER CROSSFIRE SRT-6

0% 36 M FIN.

1 ONLY!

330 HP Supercharged engine, auto stick, leather, loaded, very exclusive, ultimate sports car. Stk#040433

\$55,661* CASH PRICE
\$775 PER MTH \$0 DOWN 39M LEASE



'05 DODGE GR. CARAVAN "SPECIAL EDITION"

0% 36 M FIN.

STOW 'N GO

28S pkg: Air, 7 pass, V6, ABS, quadseats, sunscreen glass, tilt, cruise, full pwracc, special edition group. Stk#357413

\$24,485* CASH PRICE
\$258 PER MTH \$3,500 DOWN 27M LEASE



'05 DODGE RAM QUAD CAB "HEMI SPORT"

0% 60 M FIN.

21 ONLY!

26G pkg: Hemi-auto, air, custom accessories that you just have to see for yourself.

\$36,599* CASH PRICE
\$458 PER MTH \$0 DOWN 48M LEASE



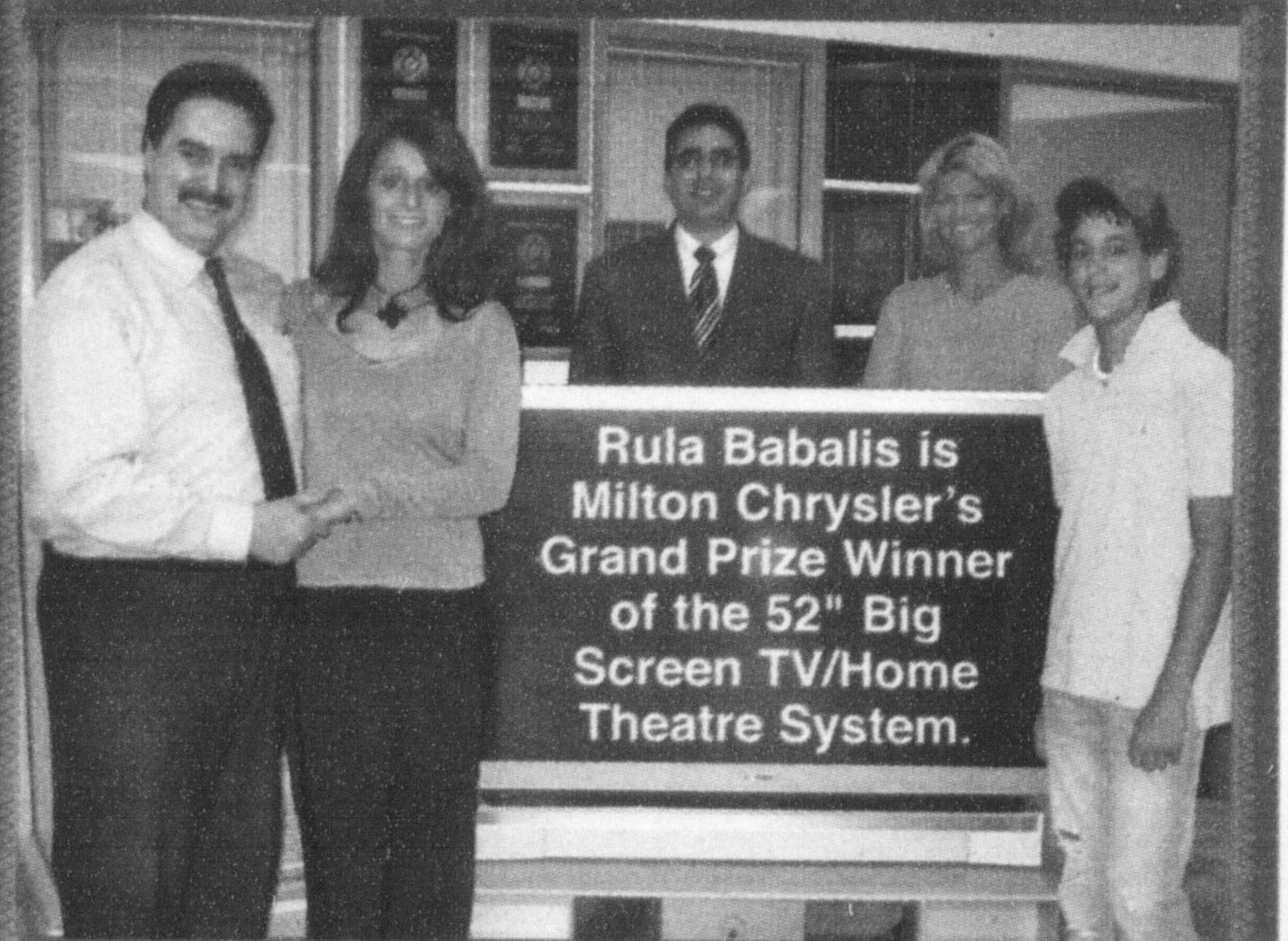
DEMO SALE • DEMO SALE '05 DODGE MAGNUM SXT

0% 60 M FIN.

26G pkg: 3.5LV6, auto, air, loaded, sun-roof, prem sound system. Stk#536853 MRSP \$34,500

\$28,888*
NO CHARGE, FREIGHT & A/C TAX

To Our **Winners...** Congratulations!



Rula Babalis is Milton Chrysler's Grand Prize Winner of the 52" Big Screen TV/Home Theatre System.

Rula was one of the many customers who automatically qualified to win during the November/December promotion. Pictures are Milton Chrysler's Joe De Oliveira (left), winner Rula Babalis and son Tony. At back are Phil Ciantar, General Sales Manager and Lisa Belanger, Secretary Treasurer.

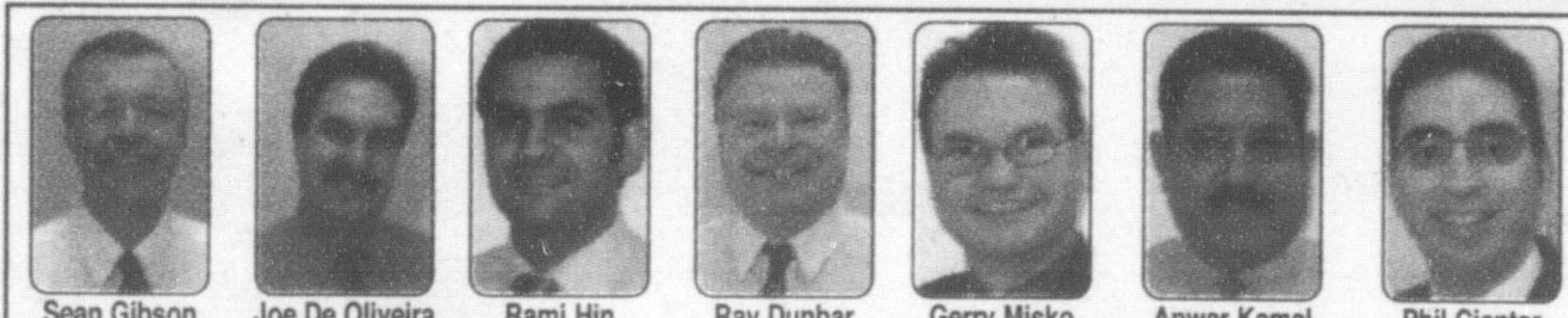
FINANCING PROVIDED BY...Chrysler Financial...VISIT US FOR MORE DETAILS!!!



"WE SELL SATISFACTION"

81 ONTARIO ST. N., MILTON
Visit us at www.miltonchrysler.com

THERE IS ONLY ONE MILTON CHRYSLER



ONE BLOCK NORTH OF ZELLERS

905-878-8877 • 1-800-303-3257

*Based on 2004 year end SSI results for our dealer group, verified by Daimler-Chrysler Canada. *Cash sale price includes DA (dealer allowance), add for applicable freight, admin. fee, taxes and licence fee (demos no charge freight, a/c tax and fuel tax). Special finance and lease rates vary by model. See dealer for details. OAC (lease payment terms as shown). Due at signing applicable down payment, first payment, applicable freight, admin fee, taxes and licence fee. 20,400 km annual mileage allowance. Excess kilometre charge 15¢ per km. Closed end, walk away lease, OAC. †† See dealer for details. All offers expire January 31, 2006. See dealer for details.