

Dateline

• from DATELINE on page A14

Hopedale Mall at Rebecca Street and Third Line in Oakville, holds its **Peer Counselling** by phone or in person for women facing abuse, grief/loss and relationship issues from 10 a.m. to 3 p.m. No appointment is necessary. To register or for more information, call (905) 847-5520.

The Centre for Skills Development and Training holds an **information session** from 9:30 to noon at the Milton Employment Partners Centre, 550 Ont. St. S., suite 203, for its free, five-day program for unemployed adults called Career Explorations Express. For more information, call (905) 333-3499, ext. 103 or visit www.thecentre.on.ca.

Wednesday Jan. 11

The **Close and Over Sixty bridge group** meets from 1 to 4:30 p.m. at St. John's Church, Guelph Line and No. 10 Sideroad. The cost is \$2. For more information, call (905) 854-2254 or (519) 821-8630.

A **cancer support group** for sufferers and caregivers is held at Martindale Gardens, 45 Martin St., at 7 p.m. For more information, call Elizabeth Kiddle at (905) 878-4952.

Milton District Hospital holds a one-on-one **breastfeeding clinic** with a certified lactation consultant from 1:30 to 3 p.m. For more information or to make an appointment, call Jean Gallen at (905) 878-2383, ext. 7030.

The Milton Seniors' Activity Centre, 500 Childs Dr., holds **contract bridge** at 9:30 a.m. and **shuffleboard** at 1:30 p.m. The cost for each is \$2 for members and \$4 for

non-members. Its **Weekly Lunch Counter** features a hot meal for \$6. Sign up in advance at the reception desk or phone in your order. And **Evening Euchre** takes place at 7:30 p.m. The cost is \$2.50. For more information on any of these activities, call (905) 875-1681.

Thursday Jan. 12

The Burlington chapter of the Schizophrenia Society of Ontario holds a **support group** for friends and families of people with schizophrenia at 7 p.m. in the library of Port Nelson United Church, 3132 South Dr., Burlington. For more information, call (905) 634-6797.

The **Deck youth centre**, 200 Main St. (rear entrance), invites high school students looking to play a game of pool to drop by between 7 and 10 p.m.

The Fine Arts Society of Milton's **Evening Group of Artists** meets from 7 to 10 p.m. The informal environment provides artists with an opportunity to exercise their drawing skills. For more information, call Janis at (905) 854-5753.

Milton District Hospital holds a one-on-one **breastfeeding clinic** with a certified lactation consultant from 7 to 9 p.m. For more information or to make an appointment, call Jean Gallen at (905) 878-2383, ext. 7030.

"The business that considers itself immune to the necessity for advertising sooner or later finds itself immune to business."

Derby Brown

Neo Centrix Salon and Spa

FULL HAIR & ESTHETIC SERVICES

January Special

2006 has our New Reduced Price Structure in Esthetics!

Pedicure only

\$35.00

Manicure only

\$20.00

Colour Cut/Blowdry

\$74.00

NEW CLIENTS!

Cut/Blowdry **\$35.00**

With Shannon or Jane

We carry:

• I.C.O.N. • A/G • WELLA • YON-KA • O.P.I. • CREATIVE • MATRIX • ZOYA

17 Wilson Drive • Main & Wilson, Milton

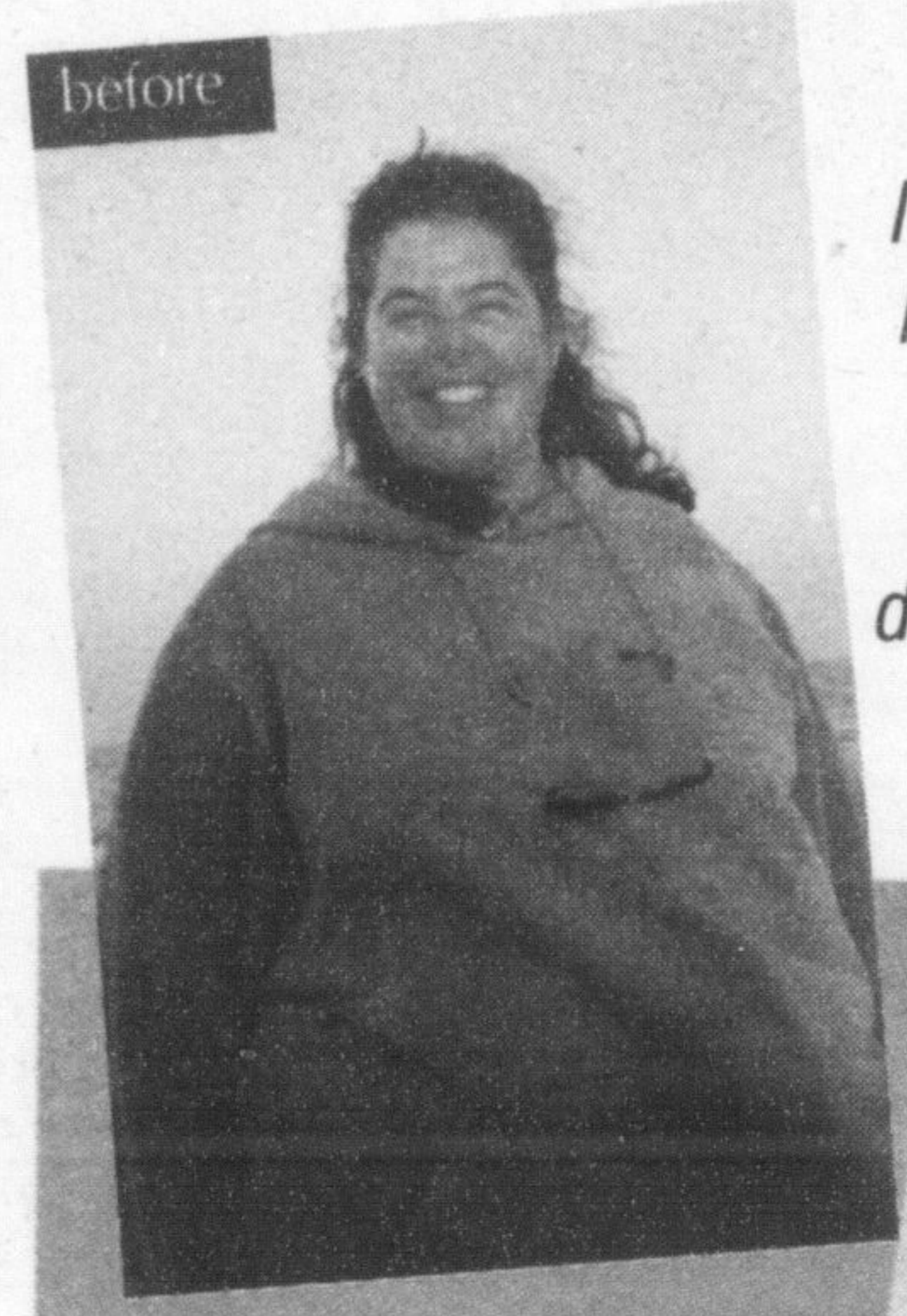
(905) 693-0878

Tues 9-7, Wed 9-8, Thurs 9-9, Fri 9-7, Sat 9-3, Sun & Mon Closed

You're an individual why isn't your diet?

"SureSlim corrected my metabolism and I lost over 100lbs!"

SureSlim did to me what Michelangelo did to marble. It took my body and carved it into a beautiful shape.



Now, I run, I jump, I stand on my head, I dance and I swim.

For fifteen years I missed out on doing these things."

Lesley



- Correct your metabolism - Lose 15-22 lbs per month
- Personalized eating plan based on your blood test results
- Eat normal foods - no pills, shakes, or packaged foods

Call now to attend the free information session

Free information session

• All your questions will be answered. www.sureslim.ca

SureSlim Mississauga
3035 Argentia Rd.

(SW Corner of Hwy 401 & Winston Churchill)
905-286-4949 • www.sureslim.ca

SureSlim®
WELLNESS CLINIC

CORRECT YOUR METABOLISM!

Install Smoke Alarms It's The Law.



The Ontario Fire Code requires that every home have working smoke alarms. Install them in your home or cottage today!



Bergsma's Home Decor

PAINT • WALLPAPER & BORDERS • LIGHTING • WINDOW COVERINGS • HOME DECORATOR ACCESSORIES & SUPPLIES

37th Annual January PAINT & HOME DECORATING SALE

Ulti-Matte WASHABLE FLAT

\$41.99 /3.79 liters

\$51.99 MSRP

- Durable Flat Finish

Benjamin Moore
The Colour Experts

Pearl LATEX

\$41.99 /3.79 liters

\$51.99 MSRP

- Especially suited for kitchens, bathrooms and children's rooms

Eggshell LATEX

\$39.99 /3.79 liters

\$49.99 MSRP

- Versatile paint for walls and trim

Semi-Gloss LATEX

\$41.99 /3.79 liters

\$51.99 MSRP

- Beautiful semi-gloss finish for trim, doors, Furniture & Walls.

SALE ENDS FEBRUARY 4TH

Define your space with colour in the comfort of your own home. Call today to schedule an in-home decorating consultation. - Sara Bergsma

20-50% off all wallpaper book orders

largest selection in Milton!

HunterDouglas ON SALE

194 Main Street East, Downtown Milton (905) 876-4922

www.bergsmahomedecor.com