

Visit us on the web at www.miltonchrysler.com

IT'S BACK!

CHRYSLER'S FAMOUS
PULL AHEAD LEASE PROGRAM
IS BACK FOR A LIMITED TIME ONLY!

JANUARY 4TH - FEBRUARY 28TH, 2006



2006 Dodge Grand Caravan



2006 Jeep Liberty



2006 Chrysler 300



2005 Chrysler Pacifica

NO MATTER
where you purchased your last
Lease from - Milton Chrysler can
get you out of your current vehicle
and into a **NEW CHRYSLER,
DODGE OR JEEP TODAY -**
with **NO PENALTY.**

If your current lease expires between
February 1st and September 30th,
2006, we'll waive all of your
remaining payments!

How would you like
LOWER PAYMENTS?
WE CAN DO IT, JUST GIVE US A CALL!
905-878-8877*



2005 Dodge SX 2.0



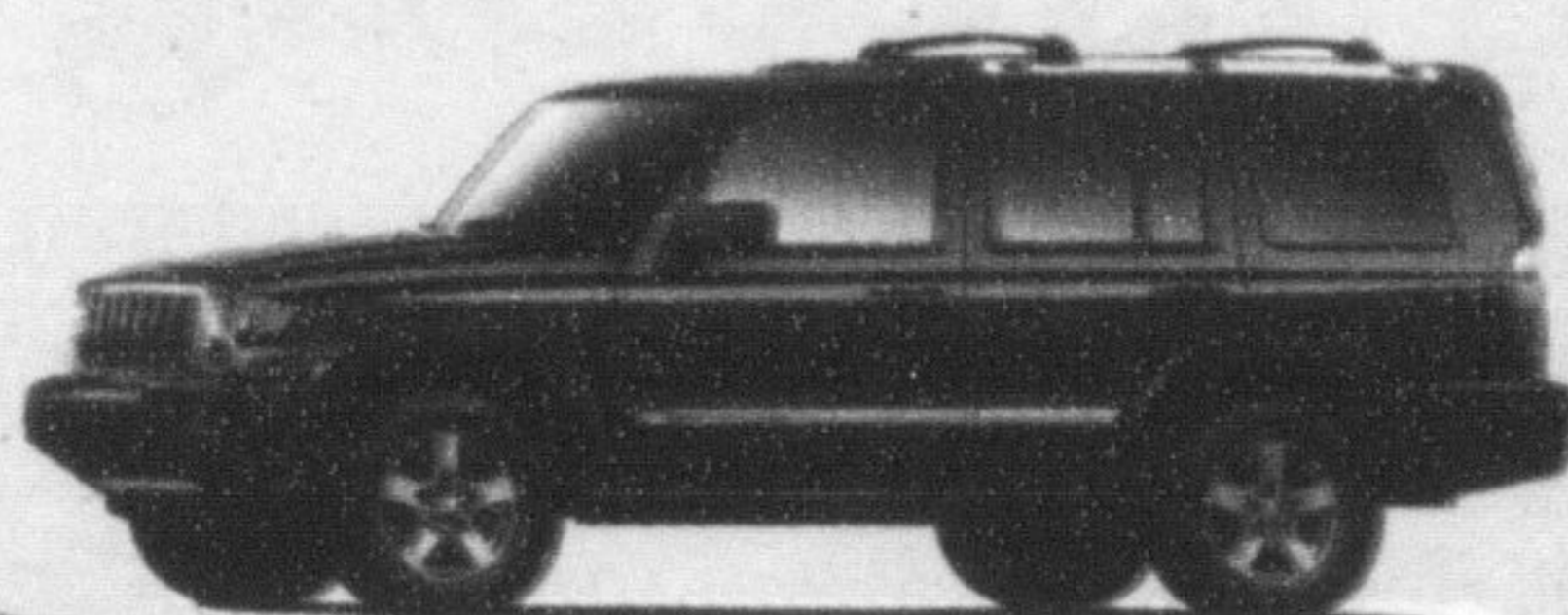
2006 PT Cruiser



2006 Chrysler Crossfire



2005 Dodge Ram



2006 Jeep Commander



2005 Dodge Magnum

**ATTENTION
BARGAIN
HUNTERS!**

Get **\$ a SUPER** on our
DEAL \$ remaining
2005
Models

MILTON CHRYSLER #1
Is Rated... In



FOR CUSTOMER SATISFACTION[®]
Experience the Difference

WE WANT YOUR BUSINESS



FINANCING PROVIDED BY...Chrysler Financial...VISIT US FOR MORE DETAILS!!!

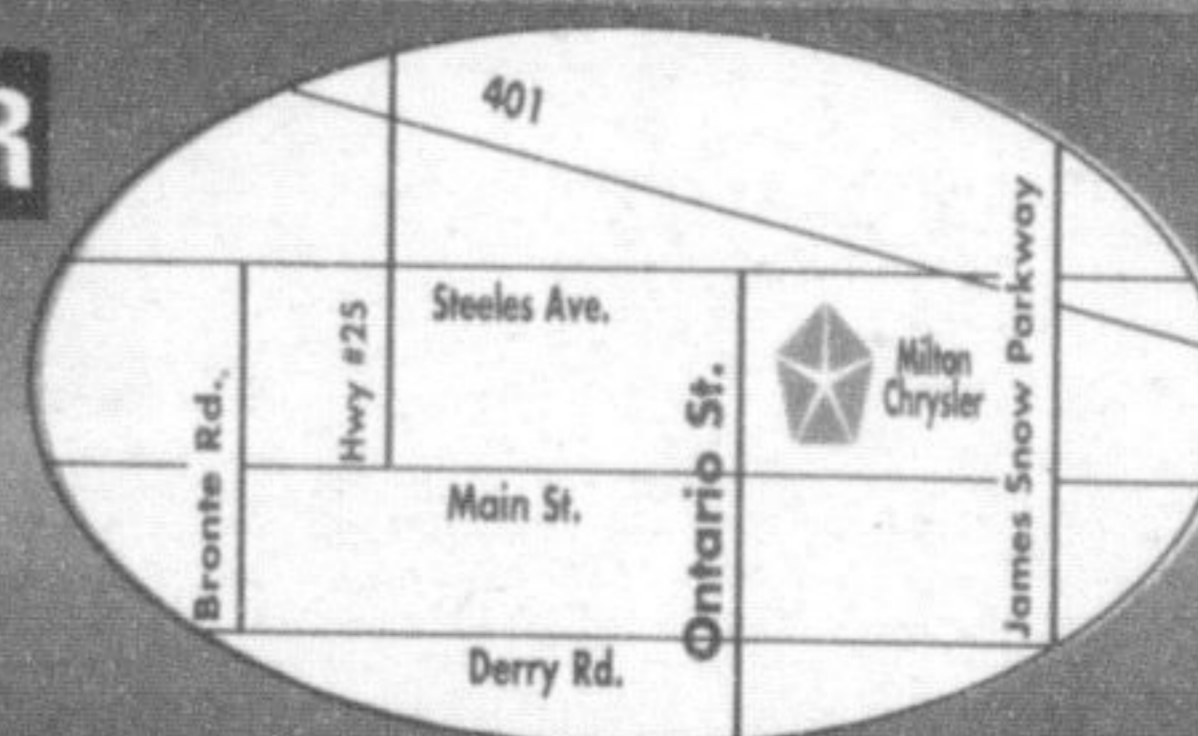


THERE IS ONLY ONE MILTON CHRYSLER

905-878-8877 • 1-800-303-3257

81 ONTARIO ST. N., MILTON

Visit us at www.miltonchrysler.com



Suspect returns to court April 21

A Brampton man charged with attempted murder in connection with the shooting of a Milton resident will return to Oakville court April 21 for another pre-trial meeting.

Basil Martin, 32, appeared at Ontario Court of Justice in Oakville December 9 for a pre-trial when the return date was set.

A pre-trial is held to hammer out legal issues before trial.

Mr. Martin has also been charged with possession of firearms.

A Milton man was shot several times in his torso in November of 2004 at his Houston Drive home. A man turned himself in to police the next day.

Mr. Martin was released on bail into the care of his father and wife.

X-mas tree collection set to start

It's time to kick those Christmas trees to the curb.

The Region will be collecting the trees starting next week and continuing to the week of January 23 on the same day residents' Blue Boxes are picked up.

When placing the Christmas trees out for collection, residents are reminded to remove all tinsel, decorations and plastic bags and also ensure they aren't frozen or stuck in the snow.

Collected trees will be turned into mulch to be used for regional landscape projects as part of Halton's continued efforts in waste diversion and recycling.

OPEN HOUSES

SATURDAY JANUARY 7th

2-4 pm, 613 Elliott. \$334,900
Verge Cabral, Royal LePage Meadowtowne Realty, 905-878-8101

SUNDAY JANUARY 8th

2-4 pm, 650 Childs Dr. #28. \$204,900
Sandy Del Papa, Royal LePage Meadowtowne Realty, 905-878-8101

2-4 pm, 613 Elliott. \$334,900
Kim Scott, Royal LePage Meadowtowne Realty, 905-878-8101

1:30-4:00 pm, 1593 Cartwright Cres. \$252,900
Adina Noris, Royal LePage Meadowtowne Realty, 905-878-8101

2-4 pm, 649 Bennett. \$345,900
Matthew Clapperton, Royal LePage Meadowtowne Realty, 905-878-8101

2-4 pm, 880 Ferguson Drive. \$369,000
Michelle Penman, Royal LePage Meadowtowne Realty, 905-878-8101

1-4 pm, 377 Wilson Drive.
Joan Hollings, Prudential Town Centre Realty, 905-878-9100

*Visit an Open House &
Open Your Door To Your Future.*

Check out the front page of this issue of the Friday Champion to find the Weekend Spotlight on Homes Section showcasing more open houses and new listings

Your life is in your hands. **MADD**
Please Don't **MADD**
Drink & Drive **MADD**
Volunteers always needed.
Halton/Peel Chapter **905-844-0096**
e-mail: maddhalton@sprint.ca

#Based on 2004 year end SSI results for our dealer group, verified by Daimler-Chrysler Canada. *See dealer for details.