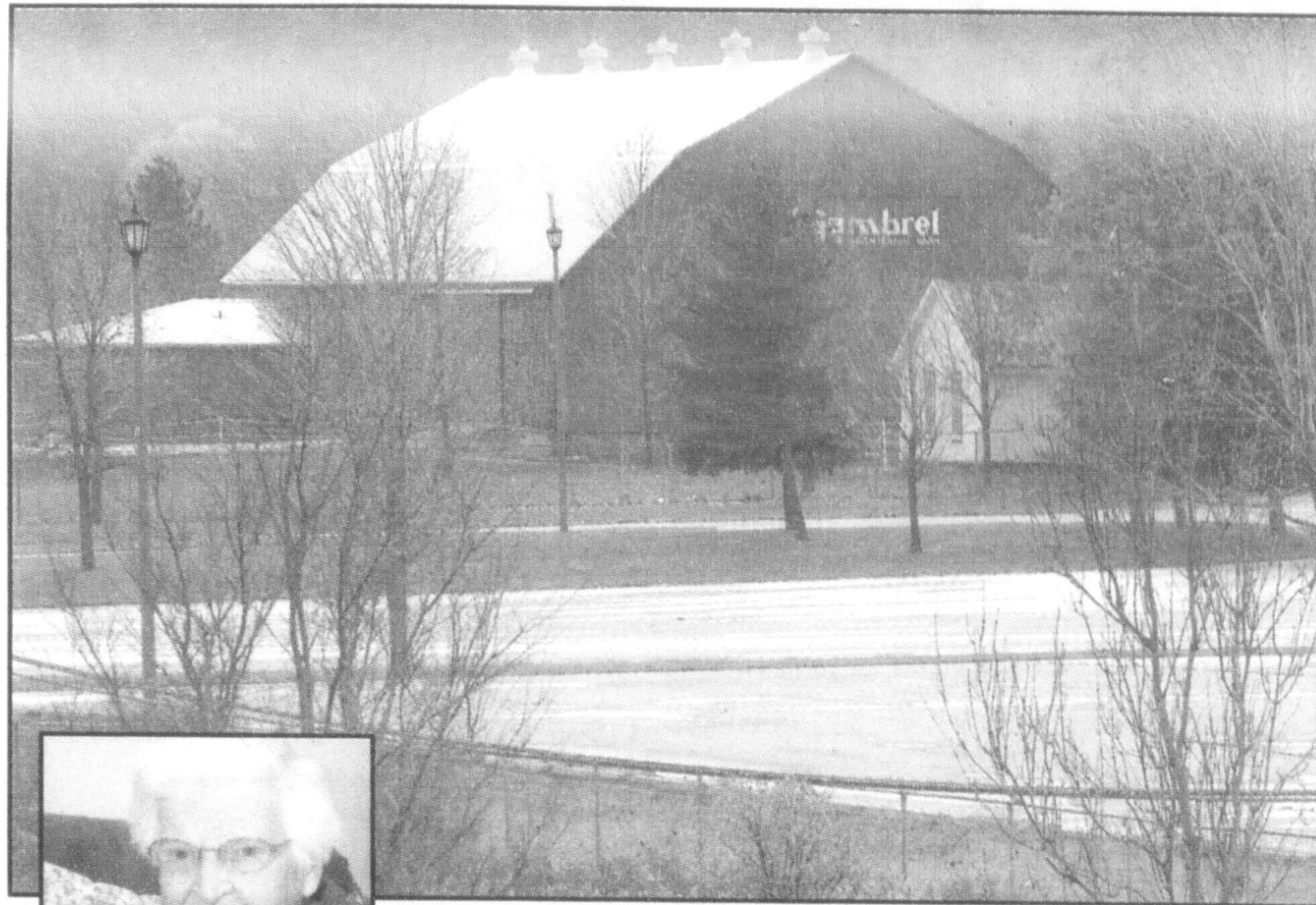
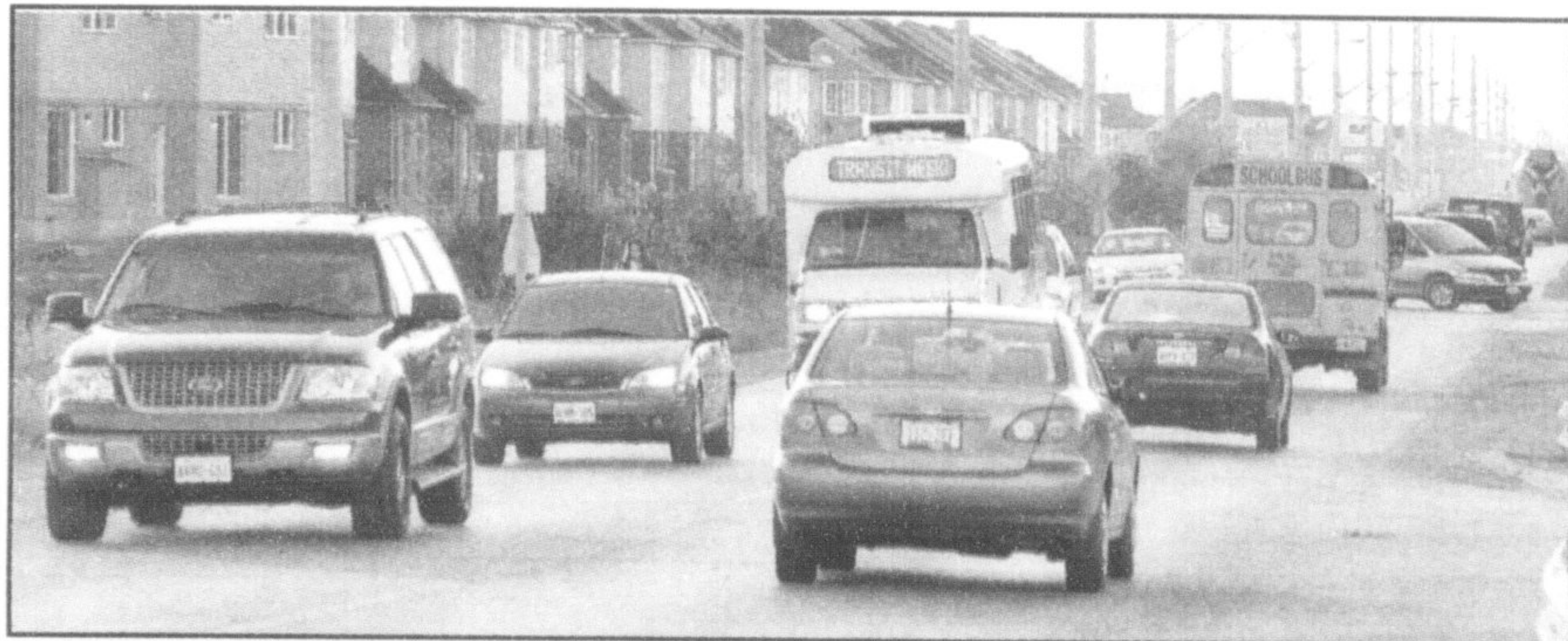


# Traffic and dogs made headlines over past year



Above, Country Heritage Park faced financial uncertainty following a decision by the Niagara Escarpment Commission denying it the right to park cars from the Toronto Auto Auction during the winter. At left, terrier Ringo was credited with saving elderly owner Elizabeth Spinks. Below, traffic congestion on Thompson Road was a major source of frustration for motorists.



• from 2005 on page A9  
Municipal Board and Environmental Review Tribunal — that spanned over 10 months. The decision was appealed by local environmental groups CONE (Coalition On the Niagara Escarpment) and POWER (Protect Our Water and Environment Resources), putting Dufferin's addition on hold.

### Traffic congestion on the rise

With Milton's ongoing growth came related problems with traffic, due in no small part to the closing of Fourth Line. In addition to causing wide-spread debate, the closure forced traffic onto nearby Thompson Road, causing lengthy morning and evening waits for area motorists — who regularly voiced their frustrations over the Town of Milton and Region of Halton's failure to upgrade roads as fast as developers are building.

### Man's best friend makes headlines

Dogs made their fair share of news this past year — both from a heroic standpoint and an unfortunate one. A Jack Russel terrier was credited with saving the life of an elderly woman found unconscious in a wooded area in winter and a Great Dane died shortly after alerting his sleeping master to fire in their McNabb Crescent home. Meanwhile, two serious dog bite incidents — one

involving a bichon frise being attacked by a German shepherd and the other seeing a pit bull bite the hand of an eight-year-old boy — led to bylaw hearings.

### NEC ruling met with outrage

Sparked by a single complaint, the Niagara Escarpment Commission (NEC) denied Country Heritage Park the right to store vehicles from the Toronto Auto Auction on its property during the winter — something that had been going on for several years. The ruling meant a loss of roughly \$60,000 of crucial funding for the park and ignited plenty of criticism against the NEC. CHP is currently appealing the decision.

### Opposition over development

Not all development was welcomed in 2005. A condo proposal for the northwest corner of Maple Avenue and Main Street was turned down by council — in the wake of major opposition to the bid by area residents — while concerns were raised over other proposed subdivisions, including two on the west end of town.

### Controversy mars school board

The Halton District School Board suffered through seemingly endless controversy this past year, with the resignation of

Dusty Papke at the centre of the turmoil. Stating that he could no longer lead the board given recent policy changes, the former director of education received a \$600,000 severance package that resulted in a flood of criticism. Both new education director Wayne Joudrie and board Chair Paul Tate also came under fire when The Champion's sister paper, The Burlington Post, obtained confidential documents related to legal fees billed to the board and an e-mail from Mr. Joudrie to trustees cautioning them against comment on the matter to the media.

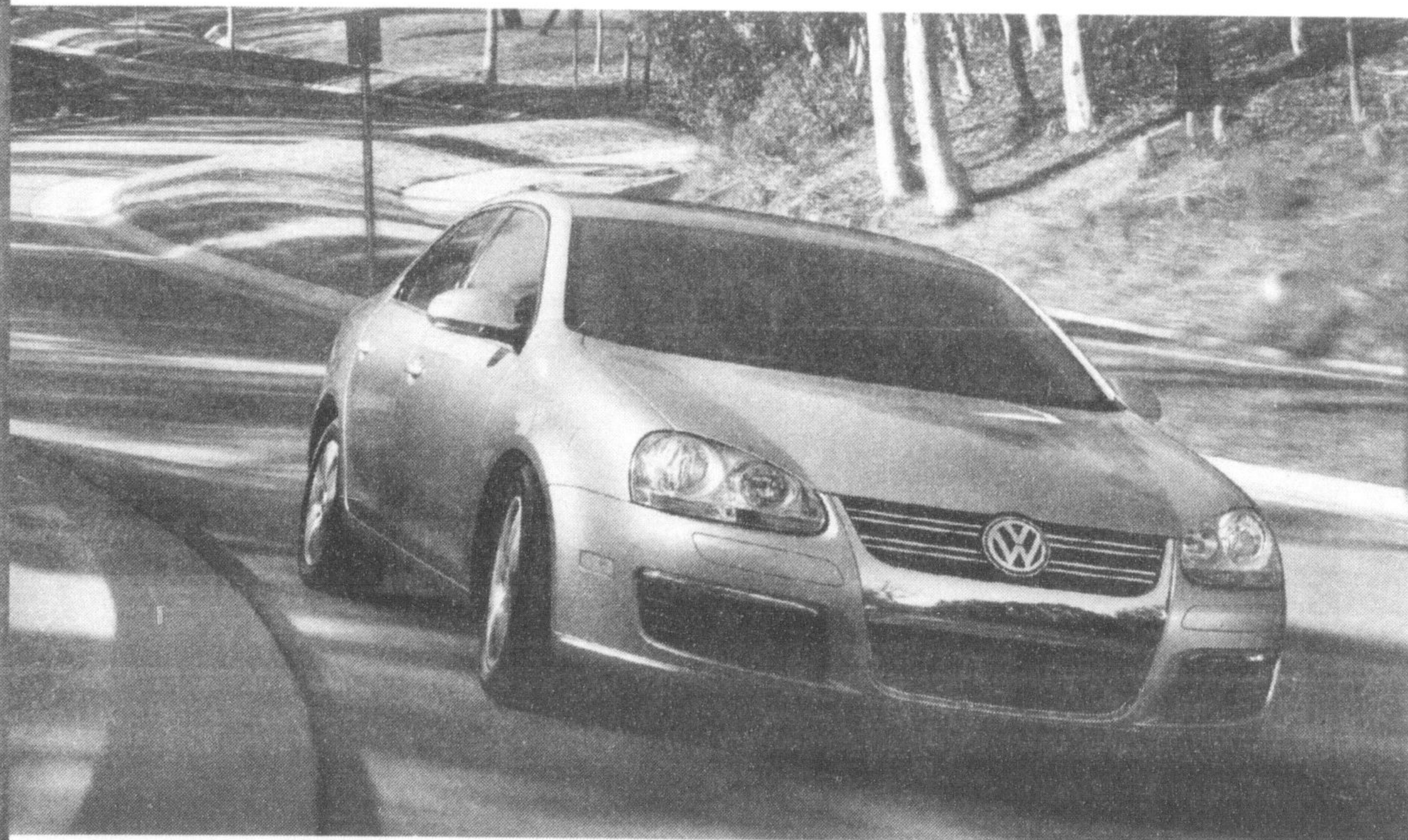
### Town Hall design deemed 'too modern'

Local residents sent a loud and clear message to the Town that the proposed design for the Town Hall expansion is too modern and doesn't fit into the neighbourhood. The design features a two-storey stone building with many windows. The updated look displeased numerous residents at an open house.

### Concern raised over tax hike

Milton's 2006 budget passed with a three per cent tax increase, amounting to an \$18 jump for the average urban homeowner and \$15 hike for rural residents. Despite a call from the Milton Ratepayers Association to reconsider the budget, town council refused to do so.

## The New Jetta. Naughty and Nice.



### Boxing Week Feature

Well-equipped from

**\$24,975\***

Or lease for

**\$269/month, 4.3% APR,**

**\$0 first monthly payment**

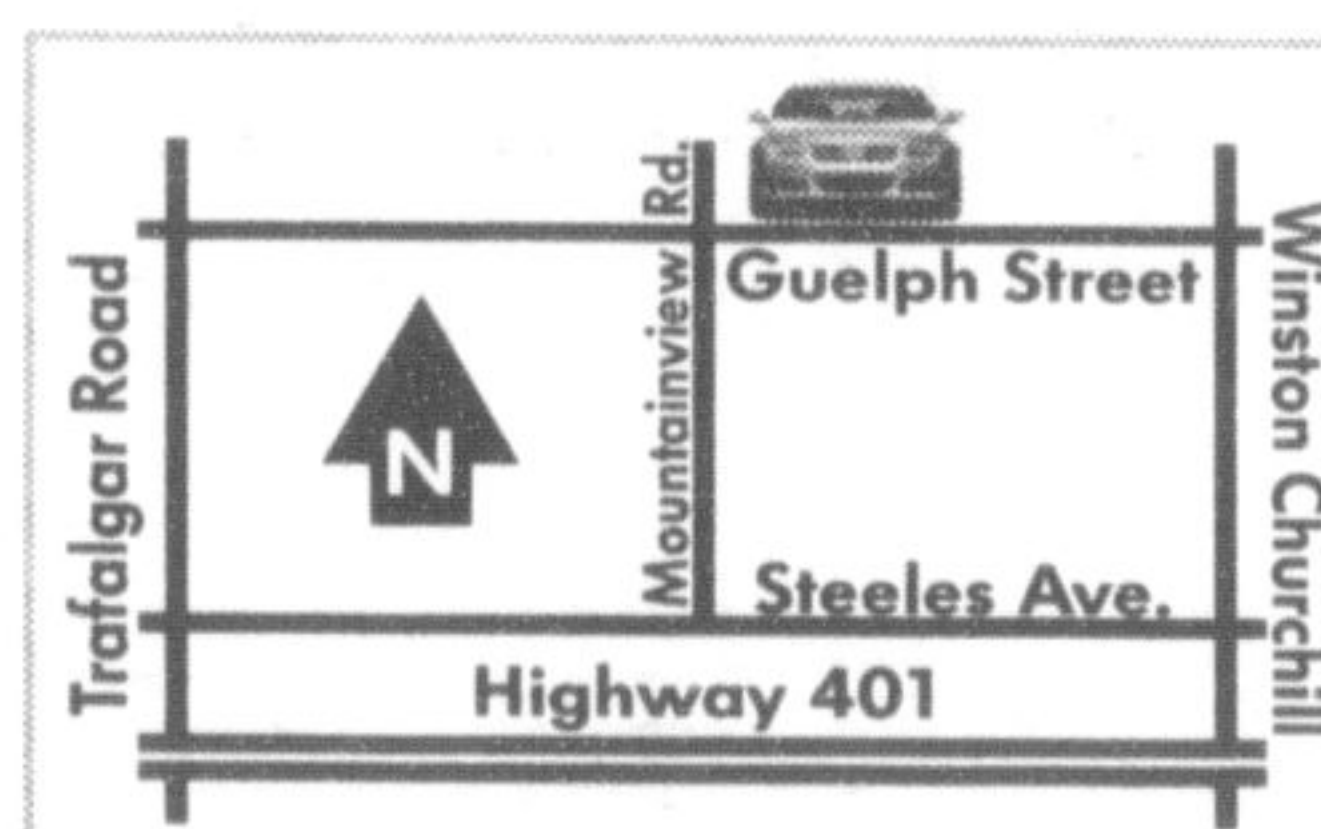
**\$0 security deposit**

48-month lease

Best side impact crash performance score ever given to a car in its class, and more bells and whistles than we can list.

# Georgetown Volkswagen

203 Guelph Street, Georgetown



905.877.5285

Drivers wanted.®



georgetownvw.com

\*IIHS rating as of April 2005. Crash-performance based on U.S. equipped vehicle. Some features may be optional in Canada. www.iihs.org. MSRP \$24,975 for 2006 Jetta 2.5-litre gas engine with manual transmission. Price excludes options, freight, PDI, license, title, dealer charges and applicable taxes. Supplies are limited. See Georgetown Volkswagen for details. \*\*Offer applies to a 48-month lease for a 2006 Jetta, 2.5-litre gas engine, 5-speed manual transmission and includes freight, \$3,375.20 down payment, no first monthly payment (up to \$500 - no cash value) and no security deposit required at time of transaction. PDI, insurance, license, administration fees, PPSA and applicable taxes extra. Monthly payments total \$12,643. At lease end, lessee responsible for \$0.12/km over 80,000 km, and damage and excessive wear. Requires Volkswagen Finance approval and dealer participation. See Georgetown Volkswagen for full details. Offers end December 31, 2005. Vehicle may not be exactly as shown. Supplies are limited.