

Marsha



**NEWS**

The Champion takes a look at the biggest news in 2005  
Page A9

**SPORTS**

Former juniors strut stuff at alumni game  
Page A15

**ARTS & ENTERTAINMENT**

Artist's latest project to adorn chapel  
Page A11



**ZAK'S PHARMACY**  
Milton's Independent Pharmacy

- Free Delivery
- 10% Seniors Discount
- All Drug Plans Accepted
- Written Drug Info. Available

**"At Zak's We Care About Your Health"**  
70 Main St. E. 875-2424

# Weekend Champion

**KAREN'S FLOWER SHOP**

487 Laurier Ave. 878-2881  
www.karensflowershop.com

A METROLAND COMMUNITY NEWSPAPER VOL. 146 NO. 84 THURSDAY, DECEMBER 29, 2005 \$1.00 (GST included) 28 PAGES "Using Communication to Build Better Communities"



## Holiday giving

Cheyenne Rosenboom, 8, and brother Gerry, 9, show their excitement as they greet firefighters, from left, Jim Finn, Gord Hurley and Greg Ollerenshaw, who were loaded with presents. The trio made special Christmas Eve visits to two deserving families — the Rosenbooms and the Robertsons (inset) on behalf of the Milton Firefighters Club.

Photos by GRAHAM PAINE



## Lots more changes coming to town

*Mayor Krantz discusses what residents can expect for their town in 2006*

By MELANIE HENNESSEY

The Champion

As 2006 rolls in, Milton Mayor Gord Krantz anticipates that the huge residential growth the town has seen is going to start shifting to the west side of town.

In an interview with The Champion Tuesday, Mr. Krantz went over what he sees happening around Milton over the next 12 months.

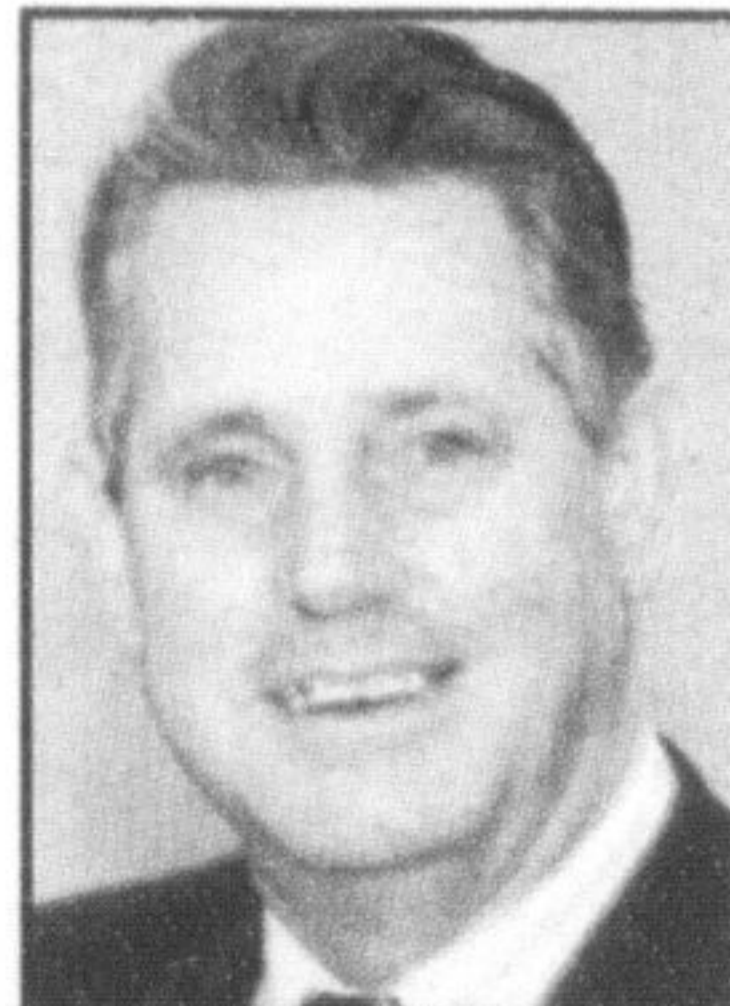
On the housing front, he said development might go down slightly in 2006 because the east end of town is "more or less building out."

"Things may slow down a bit," he remarked.

But with a slew of proposed subdivisions coming forward for west Milton, Mr. Krantz predicted the growth will transfer to that end of the municipality.

But for the mayor, things aren't just all about housing subdivisions. Maintaining that balance between residential and industrial/commercial growth is something he also deemed to be important.

He noted ensuring the industrial and commercial well-being of the town is something that tops his



Gord Krantz

agenda for next year.

"It means job creation and economic viability for this community," he said. "You have to make these things happen... tell people why they should bring their business here."

And while taxes may be going up by three per cent in 2006, or around \$18 for the average urban homeowner and \$15 for those in the rural area, Mr. Krantz said he's happy to have kept the jump around the rate of inflation.

"I'm definitely opposed to huge increases," he said, noting that's what a municipality would be faced with in the long run if it ignores necessary expenditures and tries to maintain zero per cent tax increases.

When it comes to roads, Mr. Krantz acknowledged that there's been "a bit of a backlash" from the community regarding the timing of upgrades

• see KRANTZ on page A4

**Inside**

Comment .....A6-A7  
Dateline .....A14  
Real Estate .....A18  
Classified .....A24-A25

---

**MILTON TOYOTA**  
www.milontoyota.com

**GORRUD'S AUTO**  
GROUP  
www.gorrudsautogroup.com

**National Car Rental**

Come & Experience Good Food, Great Service At One Of Our 3 Locations...

**Ste. Antonio's MARKET PLACE**

- Hot Table (Mon. - Fri.)
- Salad Bar
- Fresh Meats
- Deli Meats & Cheeses
- Fresh Bread & Rolls

875 Main St. Milton • 905-864-4443  
Mon. 11am-8pm, Tues. - Sat. 11am-8pm

**San Antonio BISTRO**

Quality In Our Business!

24 Crawford Cres., Campbellville  
905-854-1234  
Tues.-Sun. 11am-9pm, Monday CLOSED

**TLJ'S STATION Bar & Grill**

Come Taste The Difference!

43 Main St. South., Campbellville  
905-854-3111  
Mon., Fri. Sat. 8am-9pm, Wed-Thurs 11am-9pm  
Sunday 8am-5pm, Tuesday CLOSED

**LAMINATE FLOORING SALE**

**50¢ OFF\*** per square foot  
\*Cash & Carry.

Armstrong PERGO CASA ROMA

**tielemans interiors**

340 Main Street Milton 878-3435  
www.floorsfirst.com/tielemansinteriors/

HOURS: 8:30-8:00 Mon - Wed • Saturday 9:00-4:00