

Antiques & Fine Arts Auction

Thursday December 29th at 10:30 a.m.



Carved Alabaster Statue

Preview Dec. 28th 6 - 9:00 p.m. and day of sale from 9:00 a.m.

**At the Agricultural Hall
Milton Fairgrounds, Robert St. Milton**

Featuring: Quality Georgian, Victorian and early 20th c. period furnishings, vintage lighting,

original paintings

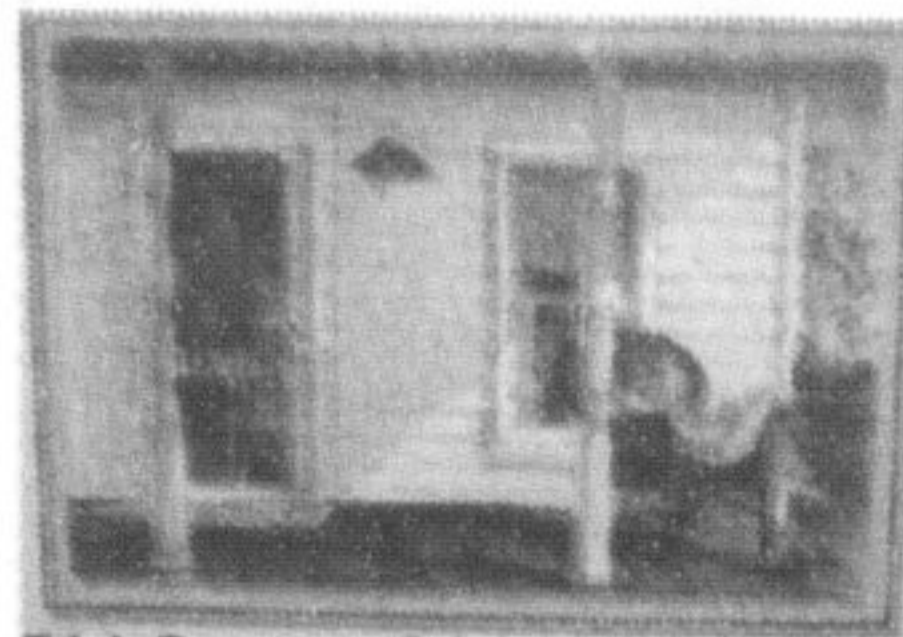
by Trish Romance, George Chavignaud, George Upper, T. Mower Martin, et al.,

fine china and porcelain incl. Shelley, Royal Crown Derby, Royal Doulton, Belleek, Dresden, etc., Moorcroft, Victorian cranberry, Georg Jensen and fine English silver, clocks, samplers from 1741 to 1872, jewelry, and many more rare and sought after items.

For full listing & photos go to www.medleyauctions.com

Terms: Cash, Cheque, Visa, M/C, Interac. **No Reserves, No Buyer's Premium**

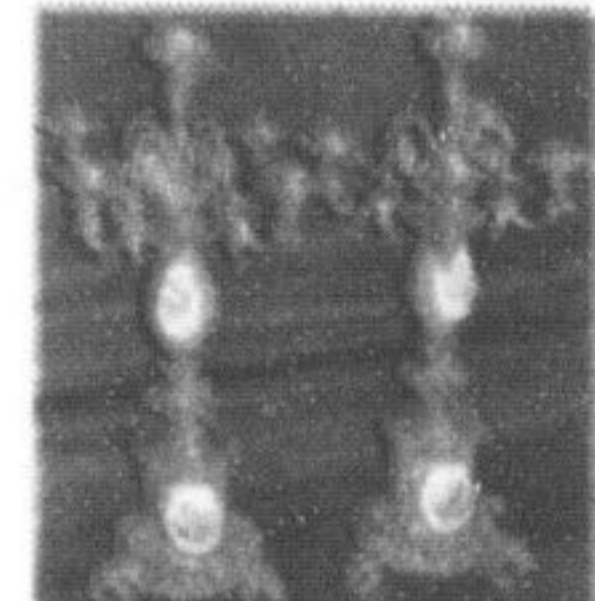
Jon Medley Auctioneer 905-878-2647



Trish Romance Original Watercolour



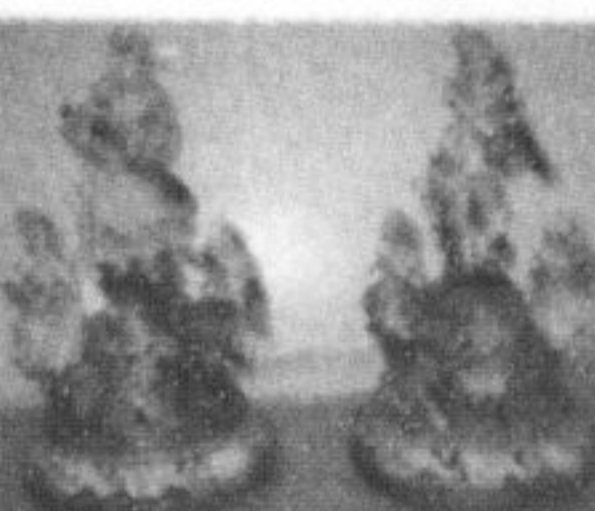
Reed & Barton Figural Inkstand



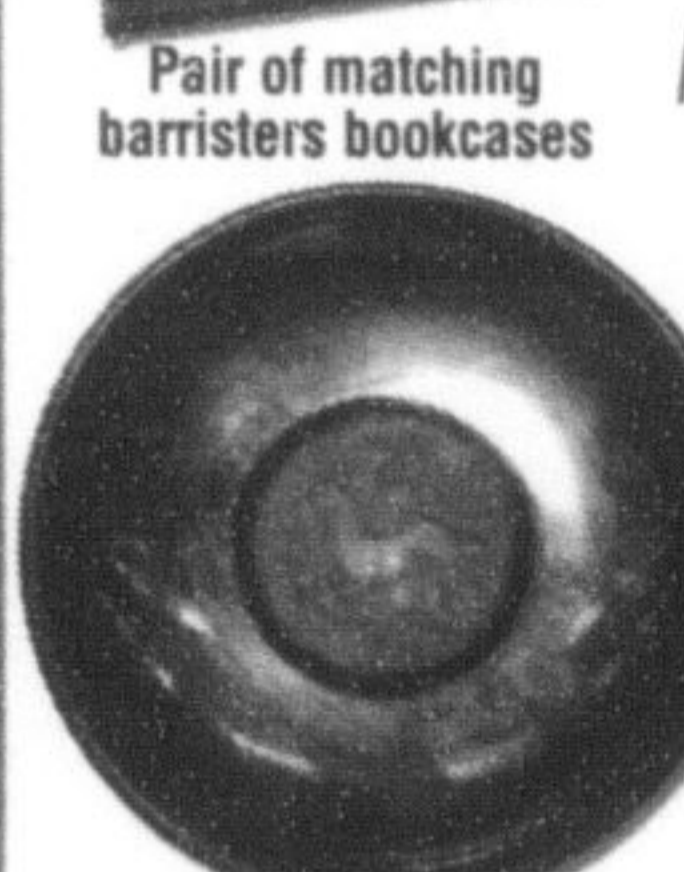
French Bronze with Sevres Porcelain Candlebrass



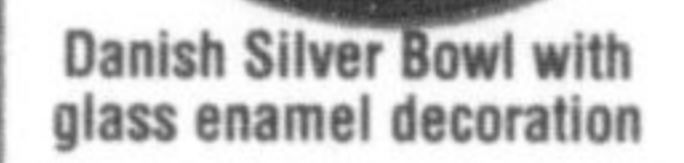
Moorcroft Claremont Vase C. 1920's



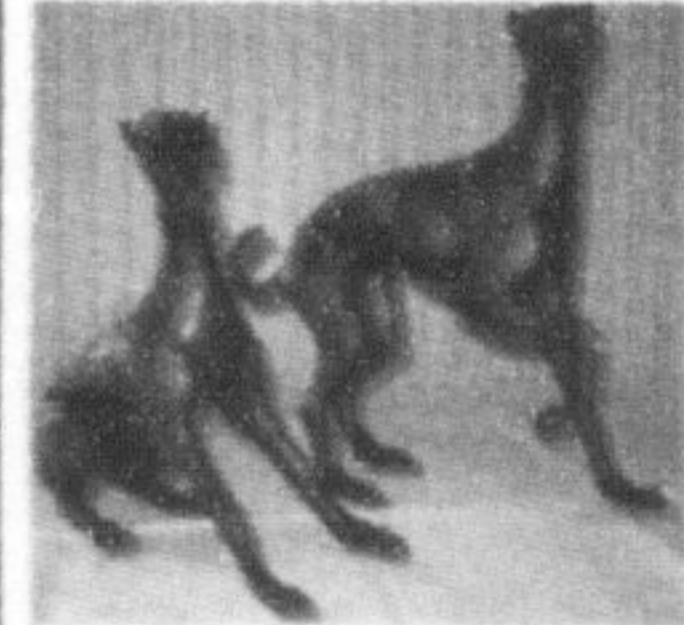
Pair 15" Dresden Porcelain Figures



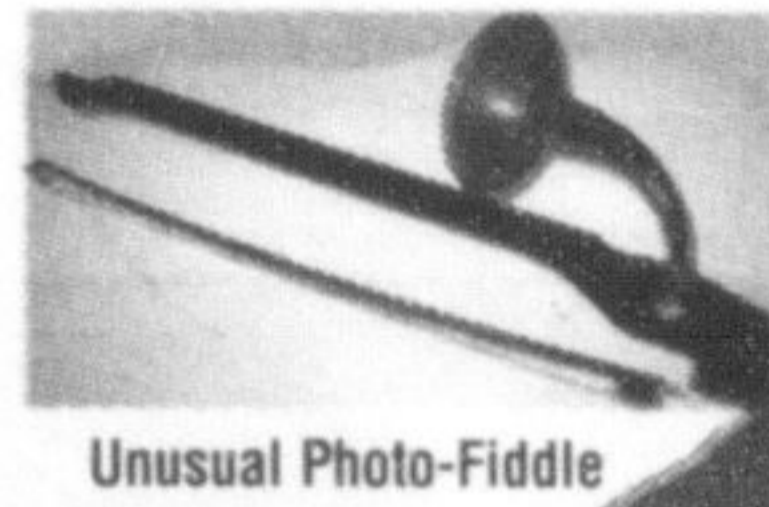
Pair of matching barristers bookcases



Danish Silver Bowl with glass enamel decoration



Pair of Bronze Dogs



Unusual Photo-Fiddle



Early 19th Century Rosewood Inlaid Table



Early 19th Century Games Table



Late 18th Century Welsh Open Dish Dresser

Industrial subdivision proposed for north end

By **MELANIE HENNESSEY**
The Champion

A large industrial subdivision has been proposed for Milton's north end.

Plans for the land framed by Regional Road 25, Dublin Line, Campbellville Road and Hwy. 401 went before town council last Monday evening. The subdivision is proposed to have 55 acres designated for business park development and 100 acres for industrial.

The proposal was the subject of a public meeting at council's session, where two residents raised concerns about the development.

Milton resident Mike Grimwood speculated if construction of the proposed Tremaine Road Hwy. 401 interchange is delayed, traffic heading to the industrial park may exit onto Guelph Line and take back roads there.

He asked how the Town would mitigate the danger to the public caused by increased traffic going

across the narrow Guelph Line overpass.

But Director of Planning and Development Mel Iovio said he suspects the industrial subdivision would be accessed from the Regional Road 25 Hwy. 401 interchange. Local resident Paul Mongelli, whose family lives near the subject property, also listed worries about the potential development for council.

He said he's concerned with the possible placement and orientation of the industrial buildings in respect to Campbellville Road.

Town Senior Planner Barbara Koopmans told him that's addressed in Milton's zoning bylaw, and issues like building placement will be resolved more finitely through a site plan for the land, which also has to be approved by the Town.

Mr. Mongelli also said he's wondering if the Town has any provisions in place to ensure the well

water supply of existing residents around the industrial land is protected from potential contamination from proposed water collector basins.

"It may even be a possibility that these pond collectors will house contaminated surface run-off that would then infiltrate into the fresh water aquifer where our well water feeds from," he said.

Ms Koopmans told The Champion that staff is looking into Mr. Mongelli's concerns and will be addressing them.

Council received a report on the issue for information purposes. Once a subwatershed impact study has been completed and approved and after the Town has received and reviewed all comments, a report with a recommendation on the proposal will be brought back for council consideration.

Melanie Hennessey can be reached at mhennessey@milton-canadianchampion.com.

Fund getting closer to goal

We're nearly there, Milton.

As of our press time late Thursday afternoon, The Champion's Christmas Bureau Fund was getting closer to its \$25,000 goal — with \$20,323 collected.

The fund was originally set to wrap up Thursday, however it has been extended just over a week — until this Friday — in a last ditch effort to reach the goal.

This is possible because the money collected is actu-

ally used the following year.

The Salvation Army fundraiser helps ensure that all local families enjoy a nice holiday, complete with all the trimmings like toys for the kids and Christmas dinner.

To contribute, please make cheques payable to the Christmas Bureau Fund and drop them off at The Champion, 875 Main St. E.



Come See Our New Look
Boxing Week Sale Starts Dec. 26th

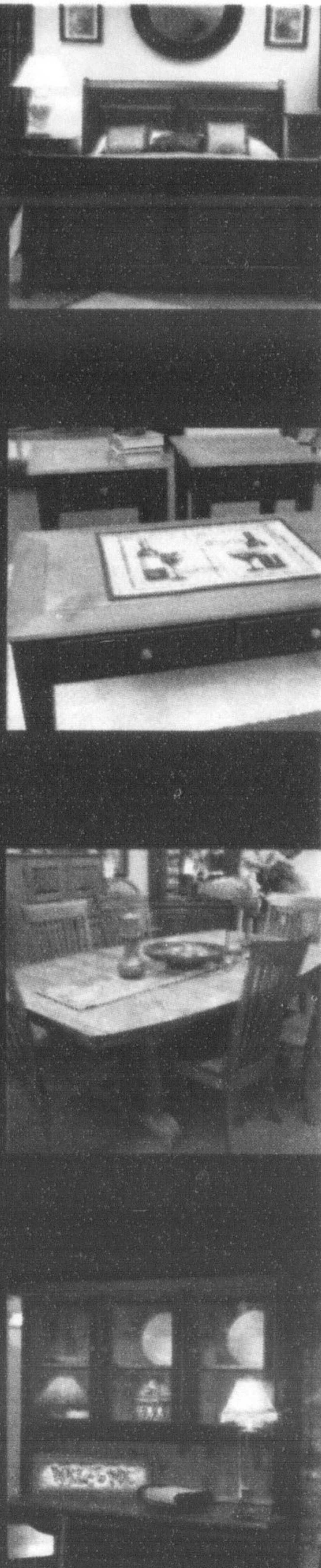


bedrooms

living rooms

dining rooms

kitchens



Fine Oak Things
Quality Oak, Pine & Maple Furniture
Open 7 Days a Week, 10am to 5pm. Est. 1989

Guelph Line South of 401, Campbellville
fineoakthings.com
905.854.0649