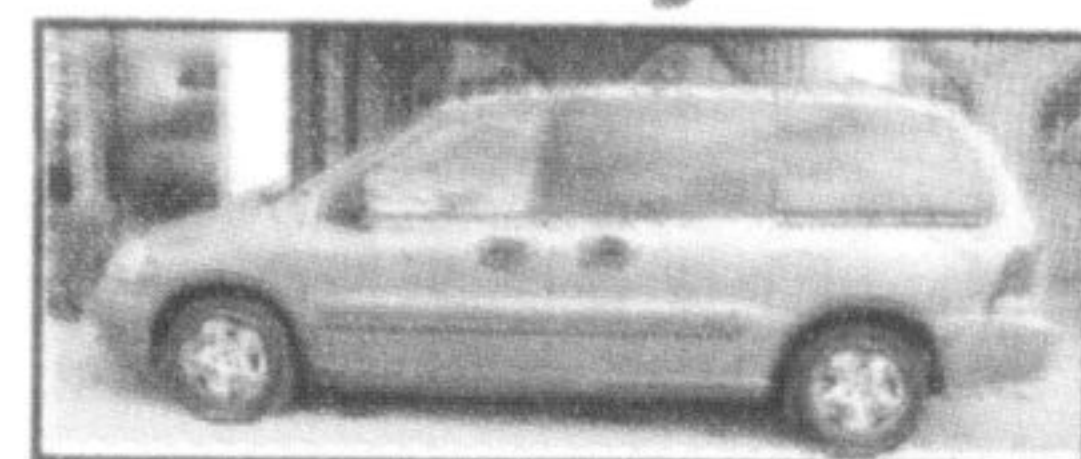


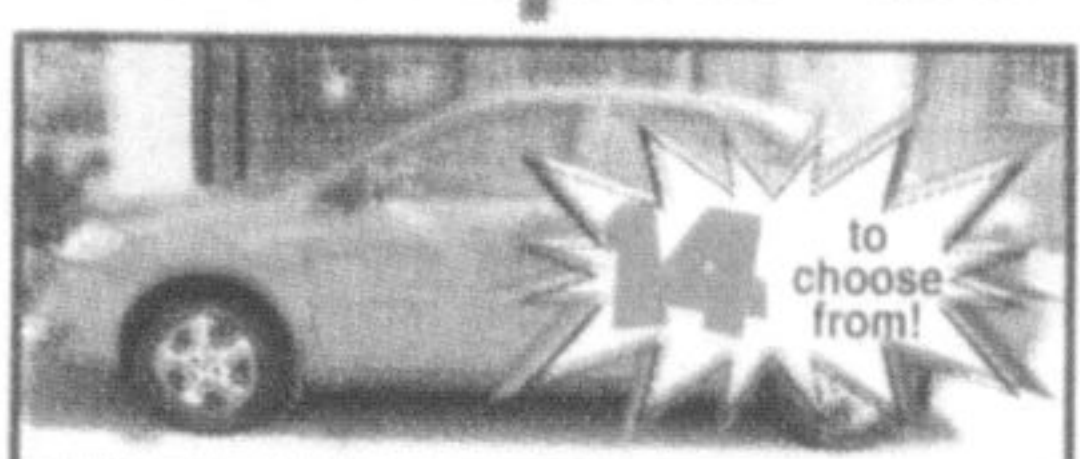
ONE BIG SALE A YEAR

MAKES CHANGING THE PRICES EASY.

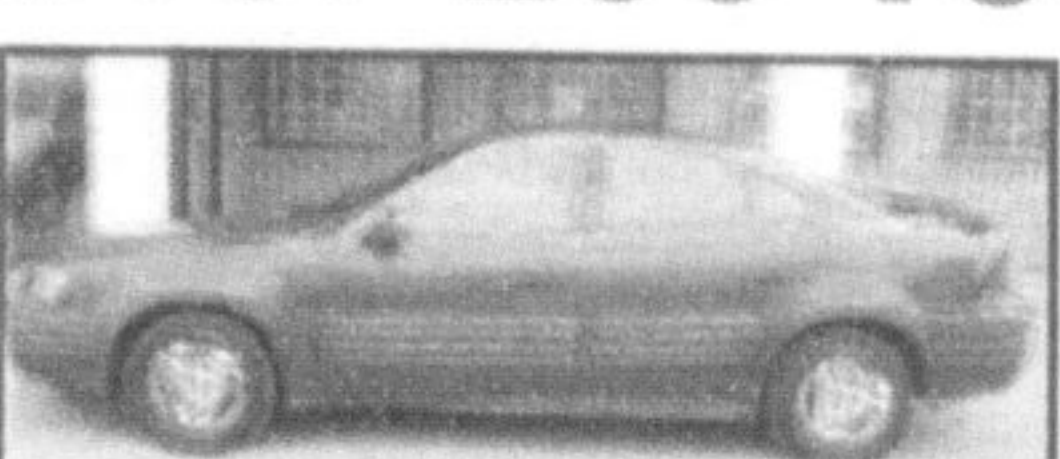
Here's just a sample of over 250 vehicles we have in stock.



2004 FORD FREESTAR 4.2 ADVANCE TRAC
Only 70,000 km!! Quad setas & more. Stk. #A20740
Was \$14,995. Now \$13,995!



2005 TOYOTA COROLLA CE B PKG.
Only 38,000 km!!
Auto, air, pl, CD, keyless.
Stk. #878334
Starting at \$15,990!



2002 PONTIAC GRAND AM SE
Only 62,000 km!!
Auto, air, pl, tilt, Delay wipers, CD.
Stk. #256189
Was \$10,995. Now 9,895!



2004 CHEV IMPALA
Only 62,000 km!!
Aluminum rims & much more.
Stk. #164083
Was \$14,995. Now \$13,990!



2002 HYUNDAI ELANTRA VE
Only 70,000 km!!
Auto, air, pq, pl, cruise & tilt.
Stk. #243068
Was \$10,995. Now \$9,988!

YEAR	MAKE	MODEL	OLD PRICE	SALE PRICE	YEAR	MAKE	MODEL	OLD PRICE	SALE PRICE					
BUICK														
2003	Buick	Regal LS	\$16,995	\$15,995	NISSAN									
2001	Buick	Regal LS	\$13,995	\$12,950	2003	Nissan	Altima SL 2.5	\$19,995	\$17,990					
CADILLAC														
2003	Cadillac	CTS	\$25,995	\$25,495	2002	Nissan	Pathfinder LE 4x4	\$22,950	\$21,850					
2001	Cadillac	Seville SLS	\$18,995	\$15,995	2002	Nissan	Pathfinder Chilkoot 4x4	\$18,995	\$17,995					
CHEVROLET														
2005	Chev	Impala LS	\$20,995	\$19,960	1999	Nissan	Maxima SE	\$11,995	\$10,950					
2004	Chev	Impala	\$14,995	\$13,990	OLDSMOBILE									
2003	Chev	Avalance	\$21,995	\$20,995	2002	Oldsmobile	Alero GL1	\$11,995	\$10,995					
2003	Chev	Impala	\$11,995	\$10,995	2002	Oldsmobile	Alero GL2	\$12,995	\$12,495					
2003	Chev	S10 Extended Cab 4x4	\$16,995	\$16,450	PONTIAC									
2003	Chev	Silverado LS Ext. Cab 4x4	\$24,995	\$21,995	2004	Pontiac	Grand Prix GT1	\$16,995	\$15,995					
2003	Chev	Venture LS Extended	\$12,995	\$12,499	2004	Pontiac	Montana	\$15,995	\$15,495					
2002	Chev	Avalance Z-71	\$20,995	\$19,995	2003	Pontiac	Grand AM GT2	\$15,995	\$14,950					
2002	Chev	Impala	\$11,995	\$10,895	2003	Pontiac	Grand Prix GTP	\$12,995	\$12,495					
2002	Chev	Malibu	\$10,995	\$10,795	2003	Pontiac	Montana	\$12,995	\$12,495					
2001	Chev	Blazer LS 4x4	\$13,995	\$12,675	2002	Pontiac	Grand AM SE	\$11,995	\$10,495					
DODGE														
2003	Dodge	Ram SLT Laramie Crew Cab 4x4	\$22,995	\$21,995	2002	Pontiac	Grand Prix GT	\$14,995	\$13,850					
2003	Dodge	Ram SLT Crew Cab 4x4	\$23,995	\$20,995	2002	Pontiac	Grand Prix GT	\$12,995	\$11,950					
2002	Dodge	Caravan SE	\$11,995	\$11,775	TOYOTA									
FORD														
2004	Ford	Freestar 4.2	\$14,995	\$13,995	2005	Toyota	4Runner SR5 Sport	\$34,995	\$33,880					
2003	Ford	Escape XLS	\$14,995	\$14,395	2005	Toyota	4Runner Limited 4x4	\$49,995	\$45,995					
2003	Ford	Escape XLT 4x4	\$19,495	\$18,495	2005	Toyota	Camry LE V6	\$23,995	\$23,490					
2003	Ford	Expedition XLT 4x4	\$22,995	\$21,890	2005	Toyota	Camry LE	\$22,995	\$20,990					
2003	Ford	F150 Extended Cab XLT XTR	\$19,995	\$17,990	2005	Toyota	Corolla CE	\$17,890	\$17,690					
2003	Ford	F150 Crew Cab XLT 4x4	\$24,995	\$22,850	2005	Toyota	Corolla	\$16,799	\$15,990					
2003	Ford	Focus ZTS	\$14,995	\$13,995	2005	Toyota	Echo	\$14,995	\$13,990					
2003	Ford	Focus SE	\$12,950	\$10,999	2005	Toyota	Matrix	\$18,995	\$18,495					
2003	Ford	Focus Wagon ZTW	\$14,995	\$12,995	2005	Toyota	Matrix	\$19,995	\$18,990					
2003	Ford	Windstar Sport TV/VCR	\$13,995	\$13,495	2005	Toyota	Matrix	\$20,995	\$19,890					
2003	Ford	Windstar Limited TV/VCR	\$18,995	\$17,995	2005	Toyota	Matrix	\$19,995	\$18,990					
2002	Ford	Explorer Eddie Bauer 4x4	\$19,890	\$18,995	2005	Toyota	Matrix	\$19,995	\$18,990					
2002	Ford	Explorer Limited AWD	\$19,995	\$18,695	2005	Toyota	Matrix	\$20,495	\$18,695					
2002	Ford	Explorer XLT 4x4	\$18,995	\$17,995	2005	Toyota	Sienna XLE Limited	\$46,995	\$43,995					
2002	Ford	F150 XLT Extended Cab 4x4	\$18,995	\$18,595	2005	Toyota	Sienna CE	\$28,995	\$27,695					
2002	Ford	F150 XLT Crew Cab 4x4	\$18,990	\$17,995	2005	Toyota	Sienna CE	\$28,995	\$27,950					
2002	Ford	Focus SE	\$12,995	\$10,950	2005	Toyota	Sienna CE	\$28,995	\$27,695					
2002	Ford	Windstar Sport	\$11,995	\$11,695	2005	Toyota	Tundra Access Cab 4x4 TRD	\$34,995	\$33,592					
GMC														
2004	GMC	Yukon Denali AWD	\$42,995	\$41,995	2004	Toyota	Corolla CE C Pkg	\$16,995	\$16,495					
2003	GMC	Sierra SLE 3/4 Ton Ext. Cab 4x4	\$28,995	\$23,950	2004	Toyota	Sienna XLE Limited AWD	\$39,990	\$37,950					
2003	GMC	Sierra SL	\$21,995	\$19,950	2004	Toyota	Sienna CE	\$24,995	\$23,950					
2002	GMC	Sierra SLE Ext. Cab 4x4	\$22,995	\$20,995	2004	Toyota	Corolla	\$16,799	\$15,990					
2002	GMC	Yukon SLT 4x4	\$22,995	\$21,950	2003	Toyota	Echo	\$12,995	\$11,995					
HONDA														
2002	Honda	Civic LX-G	\$14,995	\$13,695	2003	Toyota	Matrix XRS	\$19,895	\$18,995					
2000	Honda	CR-V LE AWD	\$15,995	\$15,395	2003	Toyota	Matrix XRS	\$21,995	\$20,995					
2000	Honda	Odyssey EX	\$16,995	\$15,950	2003	Toyota	Sienna LE	\$24,995	\$22,795					
HYUNDAI														
2001	Hyundai	XG300	\$13,995	\$13,495	2002	Toyota	Celica GT	\$16,995	\$16,495					

HERE ARE SOME GREAT VEHICLES FOR UNDER \$10,000

OPEN SUNDAYS
11:00 AM TO 4:00 PM

2002	Chevrolet	Cavalier LS	\$10,995	\$9,895	2001	Saturn	L300	\$10,995	\$9,950
2002	Ford	Taurus SE	\$9,995	\$9,895	2001	Saturn	LW200	\$11,995	\$9,950
2001	Ford	Focus Wagon SE	\$9,995	\$8,950	2001	Saturn	SL1	\$9,995	\$8,950
2000	Ford	Taurus SE	\$6,995	\$6,495	2000	Saturn	SL1	\$6,995	\$5,950
2001	Hyundai	Sonata GL	\$8,995	\$8,695	2000	Saturn	Camry CE	\$9,995	\$8,950
2002	Oldsmobile	Alero GX	\$8,995	\$8,795	2002	Pontiac	Grand AM SE	\$10,995	\$9,895
2000	Oldsmobile	Alero GL	\$7,495	\$6,950	2002	Pontiac	Sunfire SLX	\$10,995	\$9,995
2002	Saturn	SC1	\$7,995	\$7,395	2002	Pontiac	Sunfire SLX	\$9,995	\$8,950
2002	Saturn	SC1	\$9,995	\$8,595	2001	Pontiac	Sunfire SE	\$8,995	\$7,695
2002	Saturn	SL1	\$9,995	\$8,950	2001	Pontiac	Sunfire SE	\$9,995	\$8,650
2002	Saturn	SL2	\$8,995	\$7,950					

Every one of our cars is carefully selected and must pass our 110-point mechanical, appearance and detail inspection before it ever goes on the lot. If it fails, we won't sell it. We back that up with a 30-day or 2500 km exchange policy, a 6-month or 10,000 km powertrain warranty and a 30-day mechanical warranty. And we put it in writing. Few used car dealerships can offer you that kind of peace of mind. But then again, you would expect a company established in the 60's to be big on peace.

GORRUD'S AUTO PLUS

410 STEELES AVE. IN MILTON 1-800-731-6580 GORRUDSAUTOGROUP.COM

OUR 22ND ANNUAL SALE IS ON NOW!

Halton may say enough is enough

By MELANIE HENNESSEY
The Champion

Regional council will soon decide if it's going to cut back the amount of money Halton dishes out to help Toronto pay for its social services each year.

Better known as GTA pooling, the system was introduced by the Province in 1998 to support the city's social assistance and social housing requirements — something that costs the average Halton taxpayer about \$170 a year.

At council's session last week, Halton Hills Mayor Rick Bonnetto introduced a motion that would cap Halton's 2005 pooling payments at a three per cent increase over the \$35.1 million it paid last year. This would be done through adjustments to the planned December pooling payments and reconciliations. Almost \$37 million was approved in the Region's 2005 budget for pooling.

"I feel that this is the time," Mr. Bonnetto said. "I think this is where we can make a difference."

While the motion was referred to the administration and finance committee to allow staff to provide a report on the ramifications of such an action, the concept still garnered support from Mr. Bonnetto's fellow regional councillors.

"It's time we make the stance," said Oakville Mayor Ann Mulvale. "This is an example of standing up and saying, 'We need you to understand the inappropriateness of this.'"

While Oakville Councillor Allan Elgar noted he thinks council has to get all of the details before making its decision, he pointed out, "These are big dollars and I think it should be funded somewhere else."

Earlier this year, Richmond Hill council approved a resolution to withhold its share of the pooling costs, estimated to be about \$15 million in York Region's levy.

Shortly after that, York Region passed a resolution to cap its 2005 pooling payments at a three per cent increase over its 2004 payments.

Regional Chairman Joyce Savoline has written to the Province in the past to voice Halton's opposition to GTA pooling.

Some of the issues the Region has with the system include its lack of accountability and predictability and lack of independent audit verification.

Melanie Hennessey can be reached at mhennessey@miltoncanadianchampion.com.

Funds needed

Donations are slowly trickling in for The Champion's Christmas Bureau Fund.

To date, \$2,284.68 has been collected for the annual Salvation Army fundraiser, which ensures all local families have a nice Christmas — complete with toys for the kids and Christmas dinner.

The top individual contribution so far is \$500.

A lot more help is need over the next month if this year's goal of \$25,000 is to be reached.

Donations of any amount are greatly needed. To contribute please make cheques payable to the Christmas Bureau Fund and drop them off at The Champion, 875 Main St. E.