

✓ OP change to protect land to be considered tomorrow

A Regional Official Plan amendment that would protect land along the Ninth Line for the future development of an inter-regional transit line will go before Halton council tomorrow.

The amendment that the Region's planning and public works committee supported Wednesday would safeguard the property base needed to create the transit line, which could be a road designated for buses and emergency vehicles running parallel to Hwy. 407.

It's designed to reflect recommendations of the Ninth Line Corridor Protection and Land Use Study, which sets out land use options in the 876-acre study area framed by highways 401, 403, 407 and the Ninth Line, abutting the City of Mississauga.

The study also identifies proposed transit stations through the

corridor — at Britannia Road, with 400 parking spots and six bus bays, and Derry Road, with 800 parking spots and five bus bays.

The intermodal/GO Rail station at highways 401 and 407 would have 2,000 parking spots and five bus bays.

The committee held a public meeting on the topic during its session Wednesday.

It heard from Ninth Line Owners' Association chair Peter Skira, who said the group unanimously passed a motion to support the Official Plan amendment at its recent meeting.

Damian Szybalski, a planner with the City of Mississauga, also came forward to voice the municipality's concerns with the plan amendment — more specifically the designation it would put on lands at the southwest corner of Ninth Line and the current railroad

tracks allowing for high-density development.

"At present, these lands are designated for 'transit-related and supportive' uses. Because of low-density development in the Lisgar district, east of Ninth Line in Mississauga, this designation is inappropriate," he said.

"A 'corridor complementary' land use designation which does not allow high-density development is more appropriate for this area."

Part of the staff recommendation the committee supported dealt with this issue, saying the City's request will be addressed during the preparation of the Town's Official Plan amendment.

Town staff has estimated the local amendment on the Ninth Line corridor will be completed by the end of next year.

Evaluation strategy also proposed

• from REGION on page A2

be taken for problematic owners/operators during the phasing period," the report explains.

It also proposes the creation of an evaluation strategy to determine whether the bylaw should be expanded to include all food premises in Halton, like food retailers and processors.

Staff is expected to report back to council with recommendations on whether this should happen at a later date.

Dinewise began in 2003 and now has about 550 voluntary participants. Those taking part post a certificate of inspection in a highly visible location in their restaurant, and customers can then ask to see the latest inspection reports.

A list of these restaurants is available at www.region.halton.on.ca/health.

The issue will go before regional council tomorrow. *Melanie Hennessey can be reached at mhennessey@miltoncanadianchampion.com.*

Wallace

PONTIAC • BUICK • CADILLAC

2006 CADILLAC CTS



- 2.8L SFI V6 ENGINE
- 6 SPD AISIN MANUAL TRANSMISSION
- 5 SPD AUTOMATIC TRANSMISSION W/ SHIFT CONTROL (OPTIONAL)
- ANTILOCK BRAKING SYSTEM
- TRACTION CONTROL
- FOG LAMPS
- DRIVER 8 WAY POWER SEAT
- DRIVER INFORMATION CENTRE
- ONSTAR COMMUNICATION SYSTEM
- DUAL ZONE AIR CONDITIONING
- REMOTE KEYLESS ENTRY
- POWER WINDOWS / LOCKS / DOORS
- CRUISE CONTROL
- HEATED FRONT SEATS.
- 4 YEAR / 80,000KM GM TOTAL WARRANTY AND ROADSIDE ASSISTANCE

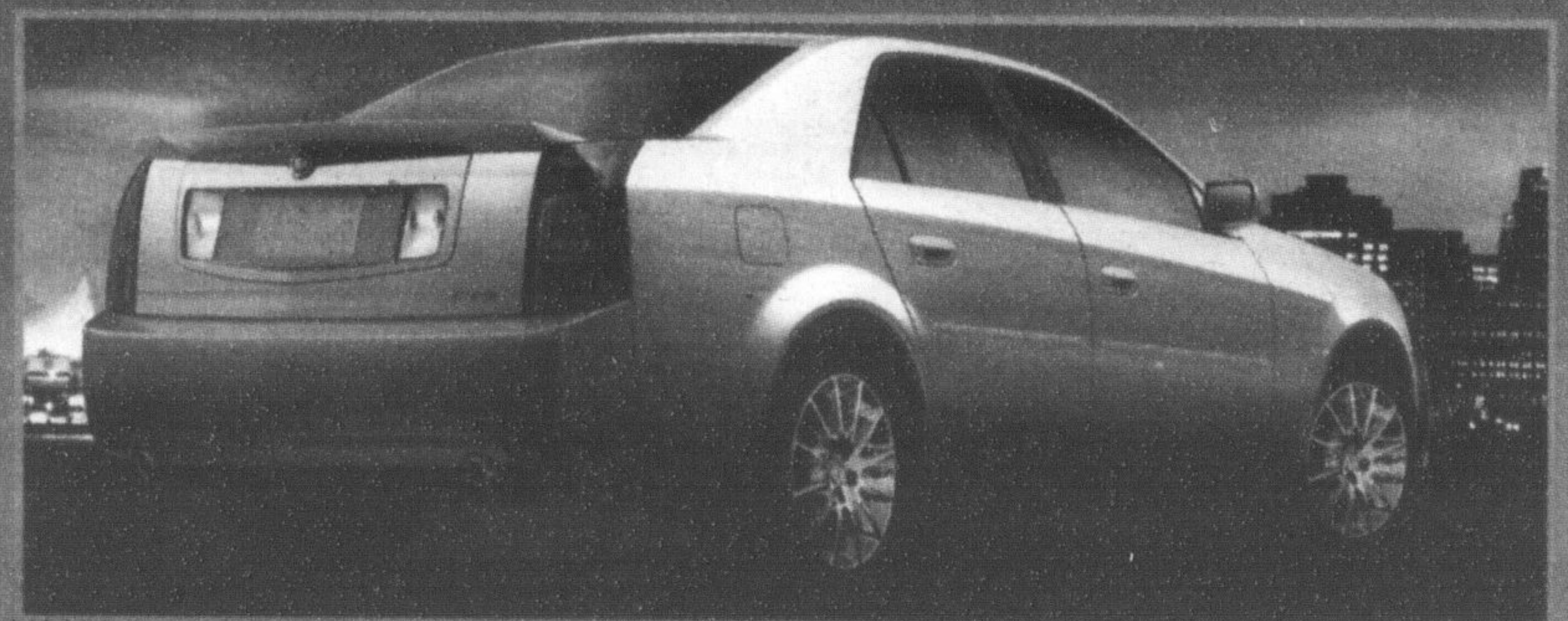
SALE PRICE FROM

\$34,998

1.75% LEASE RATE.

*\$349^{MO.} + TAX
DOWN PAYMENT \$4,550

ADD SUNROOF & AUTOMATIC FOR ONLY \$39 / month



Vehicle not exactly as shown. ** Sale Price plus freight, administration and all taxes. *** Lease based on 36 months/ 80,000km @ 1.75% down payment \$4,550. Freight \$1,350 plus applicable taxes, license and administration fees due on delivery. \$0 Security Deposit. Other leasing and financing options available. See dealer for details.

PONTIAC
BUICK
Cadillac
GMC
WALLACE PONTIAC
BUICK CADILLAC LTD.

Wallace

PONTIAC • BUICK • CADILLAC

905-878-2355

801 MAIN ST. E. MILTON
MON. - THURS.
9:00 AM - 8:00 PM
FRI. & SAT.
9:00 AM - 6:00 PM

TOLL FREE 1-888-878-2354

La Rose

Italian Bakery and Delicatessen



Fresh Bread and Buns Baked daily 7 days a week!

Weekly Bakery Specials

White Bread **59¢** ea

Pastery Special

7" Caramel Explosion **\$12.99** Reg. \$19.00

Fresh Produce No. 1 Grade

New Crop
Product of Morocco or Spain
Clementine Oranges \$4.99 2.3 kg Box ea

Product of Chile
Bananas 29¢ ea

Product of USA
Broccoli 79¢ bunch

Delicatessen

Schneider's Blue Ribbon Bologna **\$3.99** lb OR .88/100g

Brandt's Cooked Beef, Corned Beef, Pastrami & Montreal Smoked Meat **\$3.99** lb OR .88/100g

SPECIALS IN EFFECT FROM TUES. NOVEMBER 15TH TO MONDAY NOVEMBER 21ST, 2005. WHILE QUANTITIES LAST.
327 Bronte Street S. • White Oaks Plaza
905-875-0303

REGULAR STORE HOURS
Mon.-Thurs. 8:30 am - 7 pm
Friday 8:30 am - 8 pm
Saturday 8:30 am - 6 pm
Sunday 9:00 am - 5 pm

Bronte St.	
Derry Rd	X
Main St.	