

J.D. POWER AND ASSOCIATES

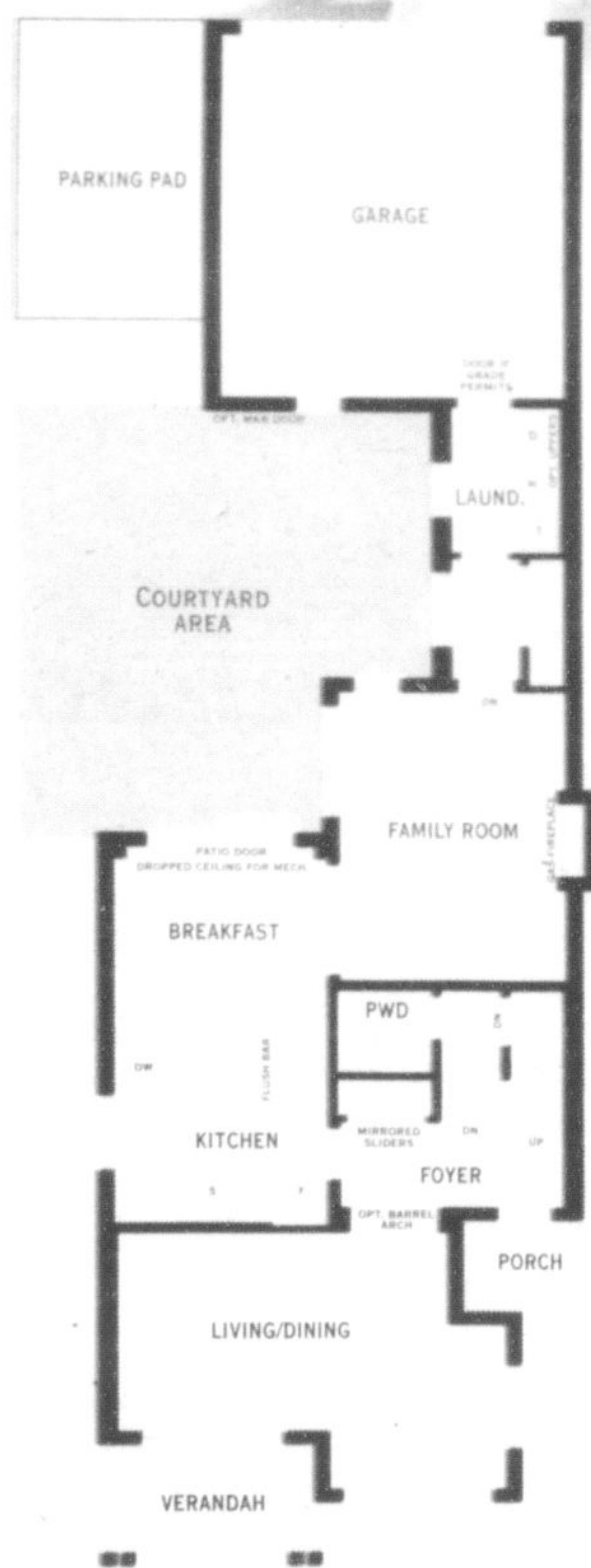


TOP 3 IN CUSTOMER SATISFACTION

WITH NEW HOME BUILDERS IN THE GREATER TORONTO AREA

MILTON *∞* HAWTHORNE VILLAGE

Introducing Outdoor Living Room. Coming Soon Courtyard Homes.



Courtyard Home, The Berrybrook 'B',
2,045 Sq.Ft.

Starting From
\$379,990



Soon the master planned community of Hawthorne Village will add a unique selection of Courtyard Homes to the neighbourhood. These stylish homes feature a secluded side courtyard that will expand your living space during spring, summer and fall (winter too if your family and friends are adventuresome). This exclusive street of Courtyard Homes also features rear garages attached to the house with access through a rear laneway. Many Courtyard Homes front onto parkland: You simply open your front door and you're in the park. With a Courtyard at the side and a park at the front, these distinctive homes offer 2 ways to enjoy more of the great outdoors, western style.

www.mattamyhomes.com

Presentation Centre Hours:
Monday to Thursday 1pm-8pm;
Friday 1pm-6pm;
Saturday, Sunday and Holidays 11am-6pm

All illustrations are artist's concept. All dimensions are approximate. Prices, specifications, terms and conditions subject to change without notice. E.&O.E.



J.D. POWER AND ASSOCIATES

J.D. Power and Associates 2005 Canadian New Home Builder Customer Satisfaction Study™. Study based on responses from 4,822 buyers of newly constructed single-family detached, semi-detached and townhomes in the Greater Toronto Area who were surveyed in March-May 2005.
www.jdpower.com