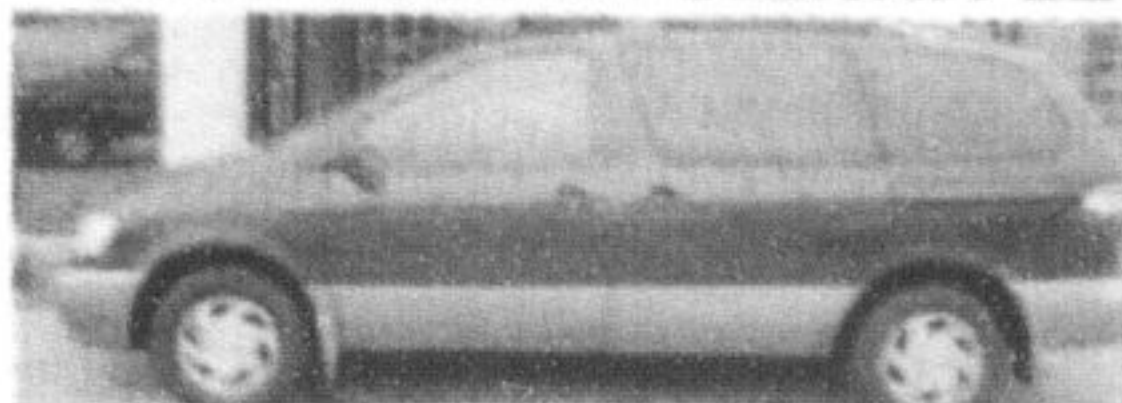


# After 44 years, picking the best used cars becomes second nature.

Here's just a sample of over 250 vehicles we have in stock.

### 2002 TOYOTA SIENNA LE



Only 74,000 km!! Rear air & quad seats, balance of Toyota Warranty. Stk #436927 **\$18,995**

### 2002 PONTIAC MONTANA



Only 99,000 km!! Quad seats, air, pw, pl, cruise & tilt. Stk# 309766 **\$9,995**

### 2001 SATURN LW200



Only 93,000 km!! Leather interior, auto, air, pw, pl, cruise & tilt, balance of Saturn Warranty. Stk #532523 **\$10,995**

### 2003 CHEV SILERADO LS X-CAB 4X4 Z-71



Only 68,000 km!! V8 (5.3L), auto, air, pl, pw, cruise, tilt & more. Stk #152318 **\$21,995**

YEAR	MAKE	MODEL	MILEAGE	PRICE	YEAR	MAKE	MODEL	MILEAGE	PRICE
<b>BUICK</b>					<b>PONTIAC</b>				
2003	Buick	Regal LS, Leather & Moonroof	73,000	\$16,995	2004	Pontiac	Grand Prix GTI	66,000	\$16,995
2002	Buick	Century Special Edition	64,000	\$13,995	2004	Pontiac	Montana SE	45,000	\$15,995
2001	Buick	Regal LS, Leather & Moonroof	54,000	\$14,995	2003	Pontiac	Montana Extended	76,000	\$14,995
<b>CHEVROLET</b>					2003	Pontiac	Grand AM GTI, Leather, Moonroof	70,000	\$15,995
2004	Chev	Impala	64,000	\$14,995	2002	Pontiac	Grand AM SE	53,000	\$11,995
2003	Chev	Avalanche Z-71 4x4	113,000	\$22,995	2002	Pontiac	Grand Prix GT, Leather, Moonroof	54,000	\$14,995
2003	Chev	Impala	122,000	\$10,995	2002	Pontiac	Montana Extended	67,000	\$12,995
2003	Chev	S-10 LS X-Cab Stepside	68,000	\$16,995	2002	Pontiac	Montana	99,000	\$9,995
2003	Chev	Silverado LS X-Cab 4x4 Z-71	83,000	\$22,995	2002	Pontiac	Sunfire SL	45,000	\$9,995
2003	Chev	Venture LS Extended	95,000	\$12,995	2002	Pontiac	Grand AM SE	53,000	\$10,995
2002	Chev	Avalanche Z-71 4x4	57,000	\$22,995	2002	Pontiac	Grand Prix GT	87,000	\$12,995
2002	Chev	Avalanche Z-71 4x4	123,000	\$20,995	2001	Pontiac	Pontiac Grand AM SEI, V6	53,000	\$10,995
2002	Chev	Trailblazer LS 4x4	109,000	\$16,995	2001	Pontiac	Pontiac Sunfire GT	62,000	\$9,992
2002	Chev	Trailblazer LS 4x4	75,000	\$18,995	2000	Pontiac	Sunfire SE	61,000	\$8,595
2002	Chev	Venture Extended	53,000	\$11,995	<b>SATURN</b>				
2001	Chev	Blazer LS 4x4	82,000	\$12,990	2002	Saturn	SC1	77,429	\$9,995
<b>DODGE</b>					2002	Saturn	SL1	85,588	\$8,995
2003	Dodge	Ram Crew Cab SLT 4x4	86,000	\$21,995	2002	Saturn	SL1	51,729	\$10,995
2003	Dodge	Ram Crew Cab SLT 4x4	56,000	\$25,995	2002	Saturn	SL1	92,118	\$9,995
2002	Dodge	Caravan SE	71,000	\$12,995	2002	Saturn	SL1	75,368	\$9,995
2002	Dodge	Caravan SE Quad Seats	80,000	\$10,995	2002	Saturn	SL1	90,803	\$9,995
2002	Dodge	Caravan SE	69,000	\$11,995	2002	Saturn	SL2	97,985	\$8,995
<b>FORD</b>					2002	Saturn	VUE	89,171	\$13,995
2004	Ford	Ranger XLT X-Cab Flareside 4x4	63,000	\$19,995	2002	Saturn	SCI	65,000	\$7,995
2003	Ford	Escape XLS	93,000	\$14,995	2001	Saturn	LW200	93,100	\$10,995
2003	Ford	Expedition XLT 4x4, Leather, Moonroof, 3rd Seat	82,000	\$21,995	2001	Saturn	SL1	56,467	\$8,995
2003	Ford	F-150 XLT Super Crew 4x4	60,000	\$24,995	2001	Saturn	SL2	40,579	\$10,995
2003	Ford	Focus SE	54,000	\$11,995	2000	Saturn	SL1	92,408	\$6,995
2003	Ford	Focus ZTW Wagon, Leather, Moonroof	66,000	\$13,995	<b>TOYOTA</b>				
2003	Ford	Windstar SEL, TV/VCR	57,000	\$16,995	2005	Toyota	4Runner LTD	12,100	\$45,995
2003	Ford	Explorer XLT 4x4, Moonroof	63,000	\$17,995	2005	Toyota	Camry LE V6	40,497	\$23,995
2002	Ford	F-150 XLT X-Cab 4x4 XTR	91,000	\$18,995	2005	Toyota	Camry SE V6	17,800	\$29,995
2002	Ford	F-150 XLT Crew Cab 4x4	113,000	\$18,990	2005	Toyota	Camry LE B Pkg.	34,338	\$24,995
2002	Ford	F-150 XLT X-Cab 4x4	79,000	\$18,990	2005	Toyota	Corolla CE C Pkg.	13,611	\$18,590
2002	Ford	Focus SE	58,000	\$11,995	2005	Toyota	Corolla CE C Pkg.	33,764	\$17,495
2002	Ford	Windstar Sport	96,000	\$11,995	2005	Toyota	Corolla CE B Pkg.	29,398	\$16,799
2002	Ford	Taurus SE	94,000	\$9,995	2005	Toyota	Corolla CE B Pkg.	31,832	\$16,799
2001	Ford	Focus SE Wagon	88,000	\$9,995	2005	Toyota	Corolla CE B Pkg.	15,202	\$17,890
2000	Ford	F-350 Super Duty Lariat Crew 4x4 Diesel	69,000	\$31,950	2005	Toyota	Corolla CE B Pkg.	11,479	\$17,890
<b>GMC</b>					2005	Toyota	Corolla CE B Pkg.	29,549	\$16,799
2004	GMC	Yukon Denali AWD	42,000	\$42,995	2005	Toyota	Corolla CE B Pkg.	29,341	\$16,799
2003	GMC	Sierra SLE2500 X-Cab 4x4	72,000	\$24,950	2005	Toyota	Corolla CE B Pkg.	34,900	\$16,790
2003	GMC	Yukon XL Denali AWD	79,000	\$33,995	2005	Toyota	Echo	43,045	\$14,995
2002	GMC	Sierra SLT X-Cab 4x4	88,000	\$21,995	2005	Toyota	Echo	38,230	\$12,995
2002	GMC	Sierra Crew Cab SLE 1/2 H.D.	72,000	\$22,995	2005	Toyota	Matrix	30,370	\$20,495
2000	GMC	Yukon SLT 4x4	116,000	\$20,995	2005	Toyota	Matrix	15,100	\$20,995
<b>HONDA</b>					2005	Toyota	Sienna CE	24,568	\$27,995
2002	Honda	Civic DX	52,000	\$13,995	2005	Toyota	Sienna CE	17,078	\$27,995
2000	Honda	CRV LE AWD	100,000	\$15,995	2005	Toyota	Sienna CE	19,000	\$27,995
2000	Honda	Odyssey EX	99,000	\$16,995	2005	Toyota	Sienna CE	21,000	\$27,995
<b>HYUNDAI</b>					2005	Toyota	Sienna XLE Limited	15,000	\$43,995
2001	Hyundai	Sante FE GL 4x4	77,000	\$13,995	2005	Toyota	Sienna CE	20,000	\$27,995
2001	Hyundai	Sonata GL	80,000	\$8,995	2005	Toyota	Tundra Double Cab 4x4	16,785	\$38,995
<b>JEEP</b>					2004	Toyota	Corolla CE C Pkg.	42,450	\$16,995
2004	Jeep	Grand Cherokee Larado 4x4	56,000	\$22,995	2004	Toyota	Sienna CE	64,663	\$16,995
<b>MAZDA</b>					2003	Toyota	Echo	58,527	\$12,995
2003	Mazda	Tribute LX	90,000	\$16,995	2003	Toyota	Matrix XR	49,533	\$17,995
2002	Mazda	Tribute ES, Moonroof, Leather	108,000	\$18,995	2003	Toyota	Matrix XRS	27,440	\$21,995
<b>NISSAN</b>					2003	Toyota	Sienna LE	67,155	\$22,995
2003	Nissan	Altima SL, Leather, Moonroof	91,000	\$18,995	2002	Toyota	Celica GT	105,892	\$16,995
2002	Nissan	Pathfinder LE, Leather, Moonroof	87,000	\$22,950	2002	Toyota	Corolla	91,365	\$11,995
2002	Nissan	Pathfinder Chilkoot	91,000	\$18,995	2002	Toyota	Highlander V6 B Pkg.	106,793	\$23,995
2002	Nissan	Sentra XE	33,000	\$12,995	2002	Toyota	Highlander V6 B Pkg.	116,091	\$24,995
2001	Nissan	Maxima GXE	78,000	\$13,995	2002	Toyota	Sienna	84,458	\$17,995
1999	Nissan	Maxima SE	112,000	Just Arrived	2002	Toyota	Sienna LE	74,733	\$18,995
<b>OLDSMOBILE</b>					2002	Toyota	Tundra X-Cab 4x4 Limited	80,414	\$27,995
2003	Olds	Alero GLS, V6, Leather Moonroof	59,000	\$15,995	2001	Toyota	4Runner	96,315	\$18,995
2002	Olds	Alero GX	114,000	\$8,995	2001	Toyota	4Runner LTD	86,350	\$25,995
2002	Olds	Alero GL2, Power Moonroof	72,000	\$11,995	2001	Toyota	Avalon XLS	79,232	\$22,995
2002	Olds	Alero GL2, V6, Power Moonroof	52,000	\$12,995	2001	Toyota	Highlander V6 AWD	93,701	\$21,950
2000	Olds	Alero GX	110,000	\$7,495	2001	Toyota	Highlander	135,779	\$21,950
					2000	Toyota	Highlander V6 AWD	73,120	\$21,950
							Camry	177,599	\$9,995

## New air monitoring program progresses

The next stage of the Halton Airshed Monitoring Project was given the go-ahead last week.

Regional council endorsed commencing phase two of the initiative that aims to create an air monitoring network in Halton to study the effects of local emissions on air quality.

Phase two involves establishing a partnership with key stakeholders who will fund the implementation and on-going operational costs of the network, a report from Halton Medical Officer of Health Dr. Bob Nosal explained.

The first phase entailed asking the Ministry of the Environment (MOE) for additional air quality monitoring stations, which it donated to the Region. The equipment is estimated to be valued at almost \$350,000. The MOE also offered staff support to help plan the network.

Phase three will include commissioning and operating the network, focusing on three key areas — the impacts of local urban growth, transportation and industry on air quality.

Dr. Nosal's report said the health department is suggesting two monitors be used in the Milton area — one in the urban section and the other outside town in the south — to observe the effects of the development Milton is seeing.

Halton Hills Councillor Clark Somerville noted he thinks the effects of development should be looked at in a place where growth hasn't happened, like the Niagara Escarpment.

The health department is also proposing placing a station around the Milton Industrial Park to document the effects of increasing industrial development.

To monitor the impacts of transportation, two stations would be used and moved around to various sites throughout Halton, such as at major intersections.

Currently, all of the Region's air quality monitoring is done in Burlington and Oakville.

## Train track tampering dangerous

Police are asking for the public's help after a section of railroad tracks was deliberately tampered with, presenting the possibility of a train derailment.

Sometime October 26, unknown suspects removed the joint bars from the north and south mainline track near Martin and Margaret streets, police said.

Fortunately, the damage was discovered by Canadian Pacific Railway personnel and repaired.

Det. Sgt. Don Cousens of Halton Regional Police said it isn't easy to remove the joint bars and would have taken considerable effort.

Halton Regional Police are asking for public assistance in identifying and apprehending the people responsible.

Anyone with information is asked to call police at (905) 825-4777 or Crime Stoppers at 1-800-222-TIPS (8477).

**NOW OPEN SUNDAY 11-4**

Every one of our cars is carefully selected and must pass our 110-point mechanical, appearance and detail inspection before it ever goes on the lot. If it fails, we won't sell it. We back that up with a 30-day or 2500 km exchange policy, a 6-month or 10,000 km powertrain warranty and a 30-day mechanical warranty. And we put it in writing. Few used car dealerships can offer you that kind of peace of mind. But then again, you would expect a company established in the 60's to be big on peace.

**GORRUD'S AUTO PLUS**