

Visit us on the web at [www.miltonchrysler.com](http://www.miltonchrysler.com)

**FINAL DAYS!**  
**2 DAYS!**

Ends **Oct 31st!**

# 2005 MODEL BLOWOUT

**We MUST Hit Our Sales Quota ALL PRICES REDUCED!**

**HELP US MAKE OUR SALES QUOTA!**

EVERY BRAND NEW 2005 CHRYSLER, DODGE AND JEEP IS BEING SOLD AT OUR LOWEST PRICES OF THE YEAR. HURRY IN, BECAUSE WHEN THEY'RE GONE THEY'RE SOLD OUT

**ATTENTION: CHRYSLER EMPLOYEES**  
"FREE" LIFETIME OIL CHANGES THIS MONTH ONLY WITH EVERY NEW VEHICLE PURCHASED OR LEASED ONLY HERE AT MILTON CHRYSLER\*\*††

**PLUS \$2000 E BONUS**

## 2005 DODGE SX 2.0

42 MPG HWY

24D pkg., 132 hp, 2.0L DOHC engine, auto o/d, air cond, AM/FM/CD, tilt steering, split rear bench seat, fog lamps, 4 wheel independent suspension, and much more!  
Stk #270217



ONLY 3 AVAILABLE

Not exactly as Shown

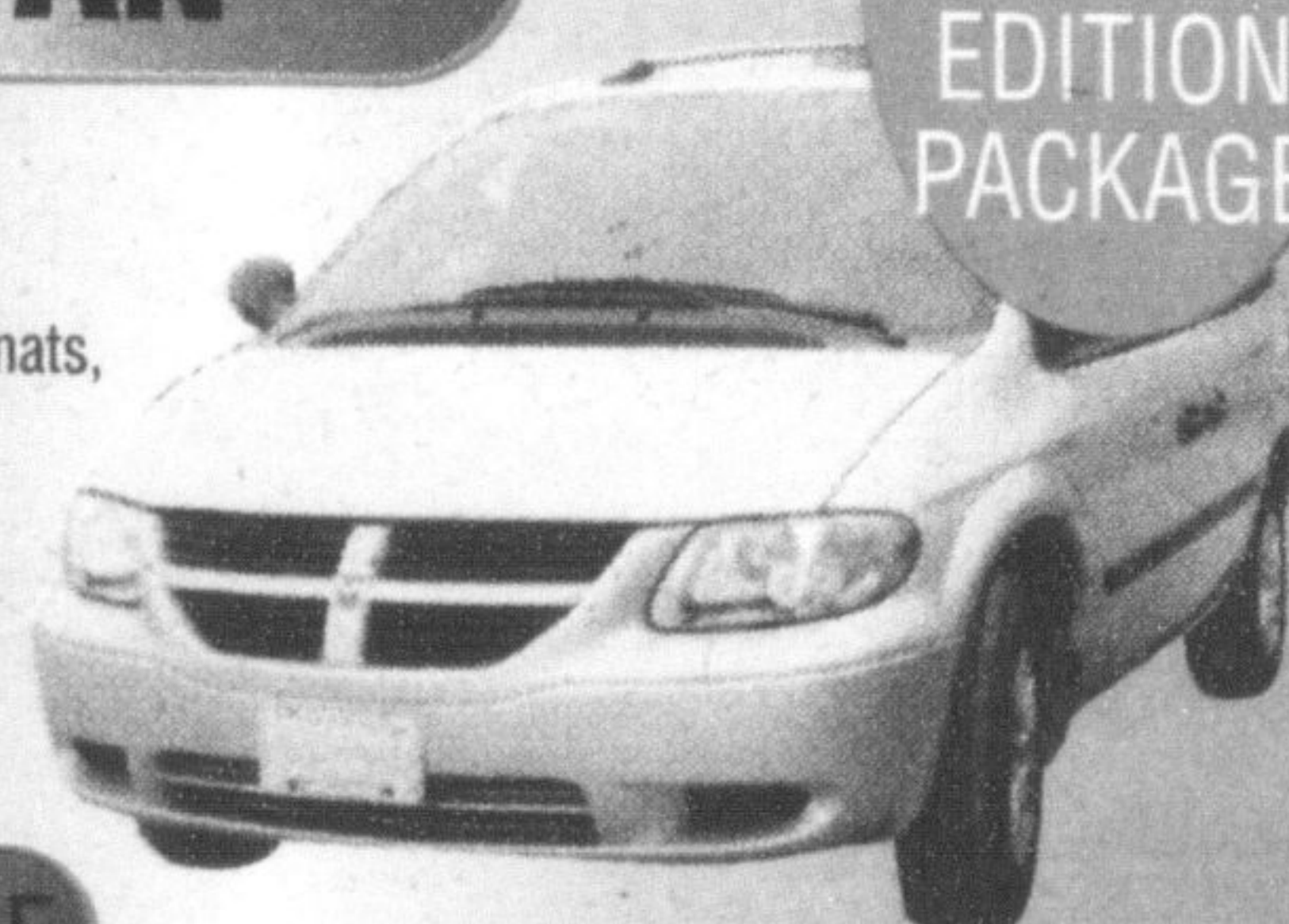
INCLUDES 5 YEAR/100,000KM POWERTRAIN WARRANTY

**CASH SALE PRICE** ~~\$14,888\*~~  
**PRICED REDUCED**

## 2005 DODGE CARAVAN

NOW INCLUDES SPECIAL EDITION PACKAGE

28S family value pkg 3.3L V6, auto o/d, air cond, AM/FM/CD, sunscreen glass, roof rack, floor mats, tilt steering, cruise, 7 passenger, dual sliding doors, power defrosting mirrors, windows & door locks & much more!  
Stk #412058



ONLY 3 AVAILABLE

Not exactly as Shown

**CASH SALE PRICE** ~~\$18,998\*~~ **NO MONEY DOWN GOLD KEY LEASE** ~~\$275\*~~

**WOW!** WE'VE GOT CASH DISCOUNTS UP TO ~~\$10,000\*~~

PLUS

**0% CHRYSLER PURCHASE FINANCING UP TO 60 MONTHS ( 5 YEARS)**

## 2005 DODGE RAM 4X4 1500 QUAD CAB HEMI

LOADED WITH OPTIONS ONE ONLY

26G pkg. 5.7L V8, 5 spd auto, air cond, AM/FM/CD, trailer tow pkg, bed liner, 4 wheel ABS, sl.r. window, antispin rear axle, electronic shift, transfer case, tilt, cruise, full power accessories & much much more.  
Stk #121084



LIMITED SUPPLY

Not exactly as Shown

**CASH SALE PRICE** ~~\$32,468\*~~  
**PRICED REDUCED**

**NO MONEY DOWN GOLD KEY LEASE** ~~\$349\*~~  
**PRICED REDUCED**

## 2006 JEEP LIBERTY SPORT

VERY LIMITED TIME OFFER

28B pkg, 4x4, 3.7L V6, auto o/d, air cond, Tilt, AM/FM/CD, sunscreen glass, alloy wheels, upgrade tires, power windows, door locks, mirrors, ABS, ESP, traction control, electronic roll mitigation, fog lamps & much more.  
Stk #21028



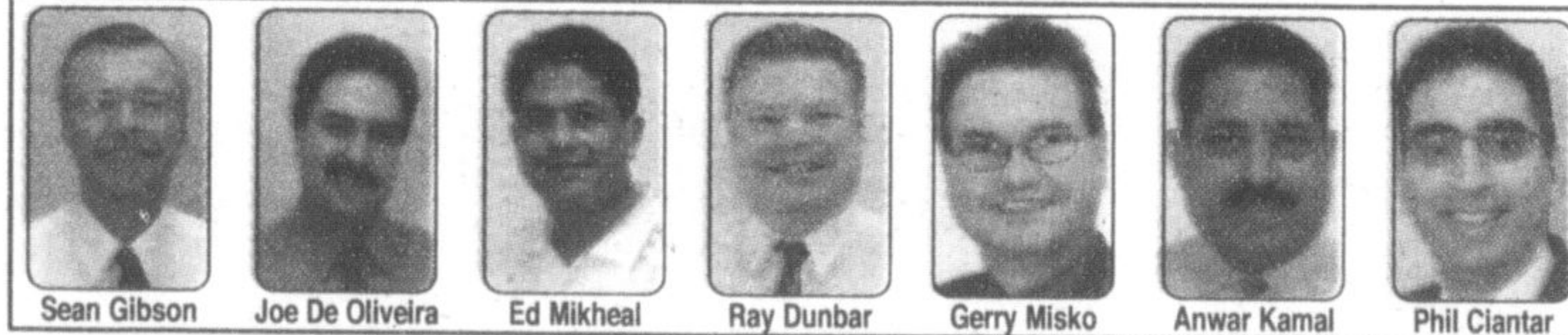
Not exactly as Shown

**NO MONEY DOWN GOLD KEY LEASE** ~~\$329\*~~  
**PRICED REDUCED**

**\$5,550 DOWN GOLD KEY LEASE** ~~\$99\*~~  
**PRICED REDUCED**

MILTON CHRYSLER #1 In Canada FOR CUSTOMER SATISFACTION Experience the Difference

**WE WANT YOUR BUSINESS**



FINANCING PROVIDED BY...Chrysler Financial...VISIT US FOR MORE DETAILS!!!

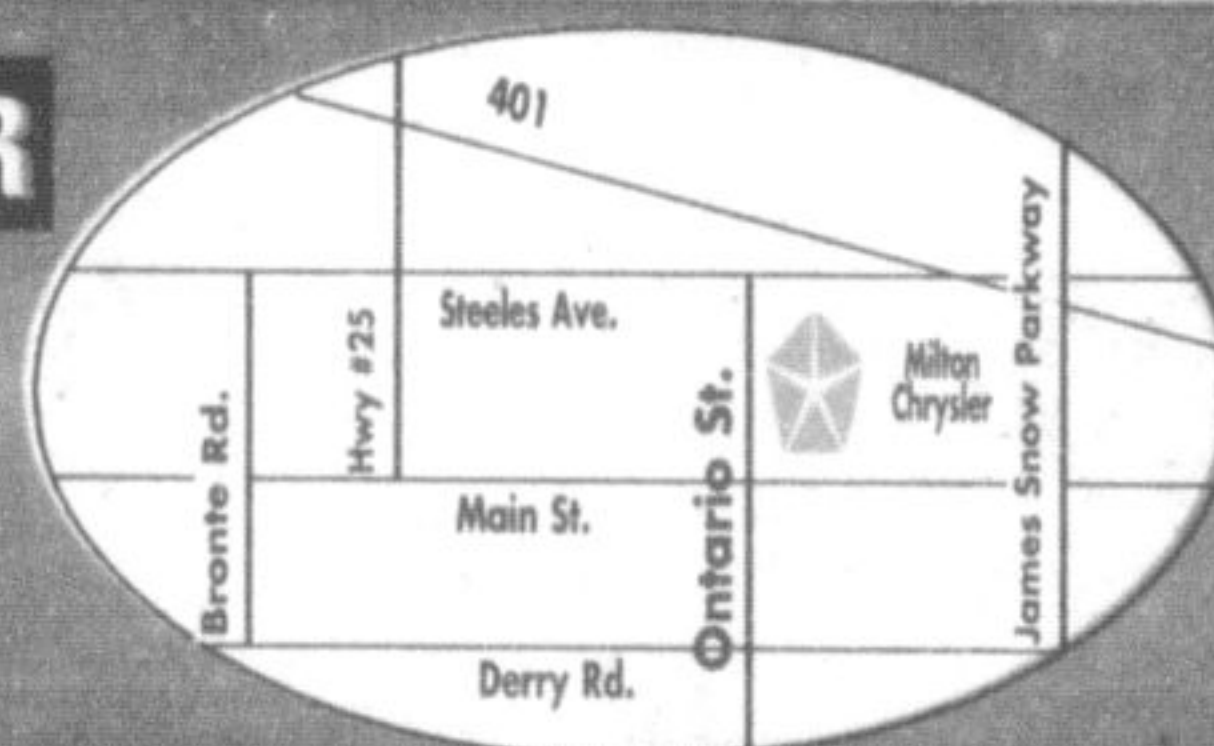
**Milton**  
CHRYSLER • DODGE • JEEP  
"WE SELL SATISFACTION"

THERE IS ONLY ONE MILTON CHRYSLER

905-878-8877 • 1-800-303-3257

81 ONTARIO ST. N., MILTON

Visit us at [www.miltonchrysler.com](http://www.miltonchrysler.com)



# Dateline

• from DATELINE on page A13

**Farmers' Market.** It's held on Main Street and features farmers, vendors, florists, artisans and musicians. For more information, call (905) 878-0581.

The Street Car Museum, 13629 Guelph Line, holds its **Halloween Spooktacular** event from 6:30 to 10:30 p.m. Admission costs \$8 per person and includes unlimited streetcar rides and trips through the haunted houses. For more information, call (905) 856-9802 or visit [www.hery.org](http://www.hery.org).

Boston Presbyterian Church, Third Line east of Regional Road 25, holds a **bazaar** from 10 a.m. to 1 p.m. featuring a hot lunch, a bake table, a silent auction, knitting, sewing and more. Everyone's welcome to attend.

**Saturday Oct. 29 - 30**

Kelso Conservation Area (Glen Eden) gives families a chance to look at the stunning fall colours with its **Fall Colours event** from 11 a.m. to 4 p.m. It features chairlift rides along the escarpment brow, plus a barbecue, games, pumpkin painting and more. The cost is \$7 for adults, \$5 for kids and free for pre-schoolers. For more information, call (905) 878-5011 or visit [www.conservationhalton.on.ca](http://www.conservationhalton.on.ca).

Mountsberg Conservation Area holds its **Autumn Wonders Season event** from 10 a.m. to 4 p.m. until November 6. It features a five-acre corn maze, wagon rides to the bison compound, apple cider press demonstrations, the PlayBarn and birds of prey demonstrations. For more information, call (905) 854-2276.

**Sunday Oct. 30**

The **Children's Hour** presents 'Cadence', an a cappella vocal group from Toronto, at 2:30 p.m. in the auditorium at 200 Main St. E. Tickets cost \$10 for adults, \$7.50 for each first child and \$5 for each next child. Tickets are available at the door or at Kymbits by calling (905) 878-9071.

Hilton Falls Conservation Area holds its **Spooks 'N Spokes Mountain Bike Challenge**, it's first ever time trial event. For more information or to download a registration form, visit [www.conservation-halton.on.ca](http://www.conservation-halton.on.ca) or call (905) 854-0262.

Mountsberg Conservation Area holds its annual **Halloween Pumpkin Carving Contest** from noon to 2 p.m., with judging and prizes for the best pumpkins. Pumpkins can be purchased on site or bring your own. General admission rates apply. For more information, call (905) 854-2276.

• see more DATELINE on page A15

### BEST BUY CORRECTION NOTICE

To our valued customers: We apologize for any inconvenience caused by an error in our flyer dated: October 21 - October 27.

Product: D-Link Xtreme G Wireless Router. This product is advertised for \$59.99 after a \$40 savings (\$30 Mail-In Rebate and \$10 Instant Savings) on p. 9 of our October 21st flyer. In fact, no savings apply. It is \$59.99 after a \$30 Mail-In Rebate. SKU: 10030147

### FUTURE SHOP CORRECTION NOTICE

Curtis MP1000 1GB MP3 Player 10058286. This product is advertised on p. 16 of our October 21st flyer with the wrong image of the red model. It is available only in black.

We sincerely apologize for any inconvenience this may have caused our valued customers.

**Discover the Music Business!**

**TMX**  
Toronto Music Expo

Seminars & Workshops  
Nov. 19, 20, 2005

sign up online [www.torontomusicexpo.com](http://www.torontomusicexpo.com)

\*Based on 2004 year end SSI results for our dealer group, verified by Daimler-Chrysler Canada. \*Cash sale price includes DA (dealer allowance), add for applicable freight, admin. fee, taxes and licence fee. Special finance and lease rates vary by model. See dealer for details. OAC †lease payment terms as shown. Due at signing applicable down payment, first payment, applicable freight, admin fee, taxes and licence fee. 20,400 km annual mileage allowance. Excess kilometre charge 15¢ per km. Closed end, walk away lease, OAC. †† Excludes diesel, synthetic and specialty oils. Offer valid October 19 to 31 2005. No exceptions. See dealer for details.