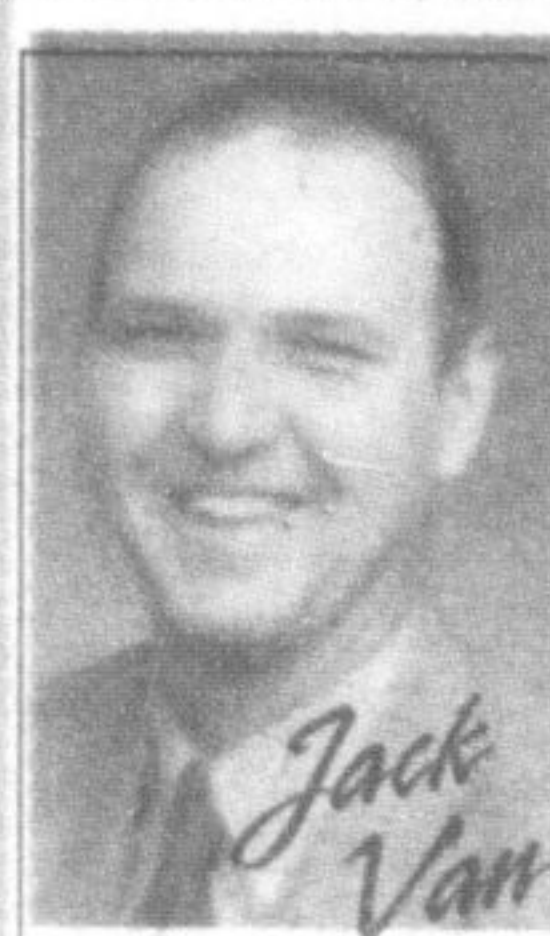


# Weekend SPOTLIGHT

To advertise, contact: Diane Wolstenholme  
 905-878-2341 Ext: 210, Fax: 905-876-2364  
 or e-mail at:  
 dianew@miltoncanadianchampion.com



**JACK VanderBreggen**  
 Sales Representative  
 905-878-8101  
 905-467-6444 (cell)  
 www.jackvan.com

CALL JACK VAN the REAL ESTATE MAN

ROYAL LEPAGE

Meadowtowne Realty, Broker  
 INDEPENDENTLY OWNED AND OPERATED



MEMBER



## OPEN HOUSE BLITZ • SUNDAY 2-4 PM

1670 CLARK BLVD.

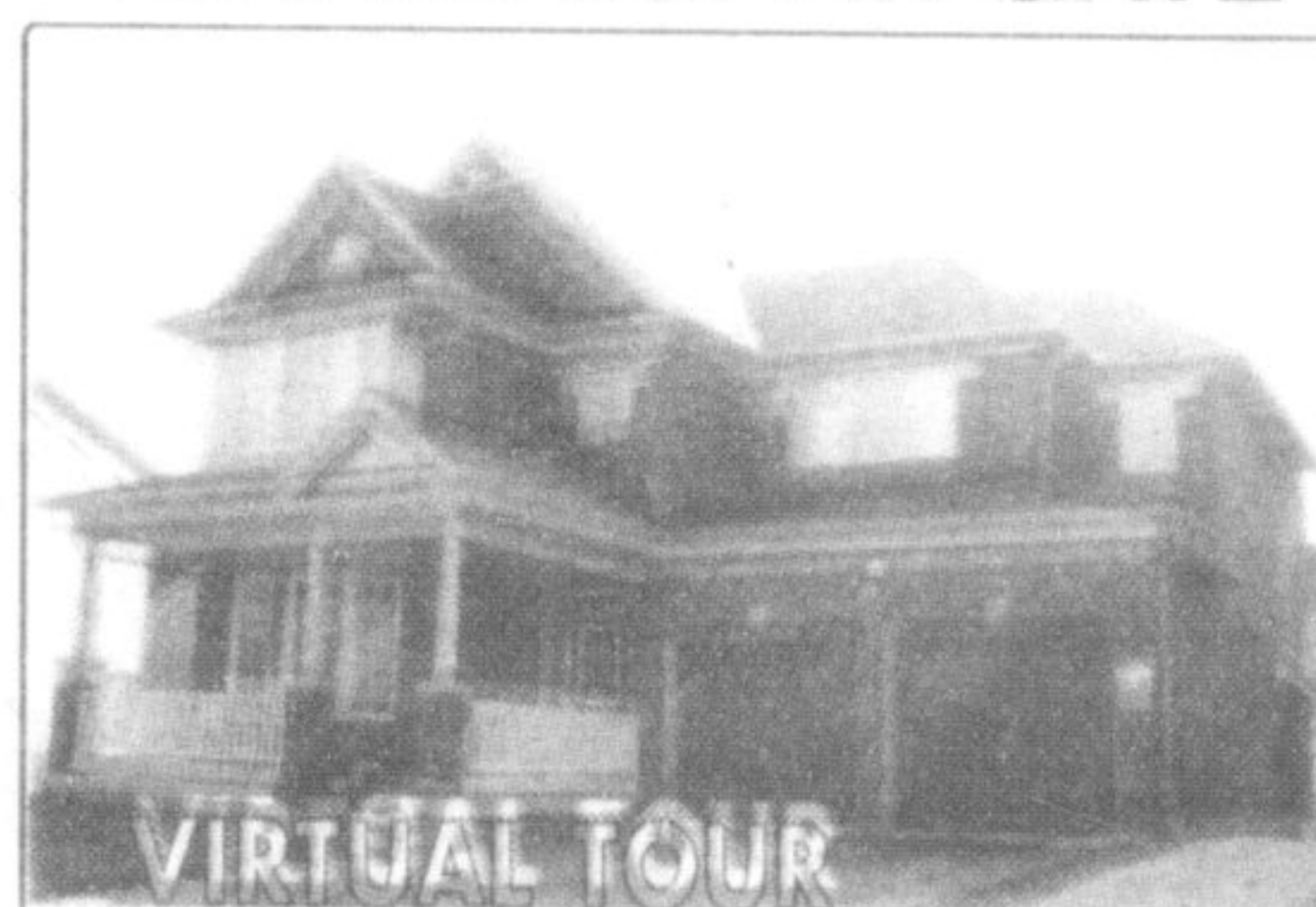


VIRTUAL TOUR

QUIET LOCATION

Spacious 3 bedroom Mattamy 'Powell' model approx. 1900 sq.ft. in Hawthorne Village. 3 baths, large kitchen & fam. rm. Access through garage. Many upgrades. \$334,900.

1360 MCGUFFIN GATE



VIRTUAL TOUR

PREMIUM PROPERTY

Large pie shaped lot in Hawthorne Village. Featuring Mattamy 'Sunderland' model with 9ft ceilings, spacious living rm & dining rm, 4 bedrooms & 5 pce master ensuite. Bright upgraded eat-in kitchen with stainless steel appliances, granite counter tops, walkout to backyard, main floor family rm with fireplace. \$429,900.

1323 CARTMER WAY

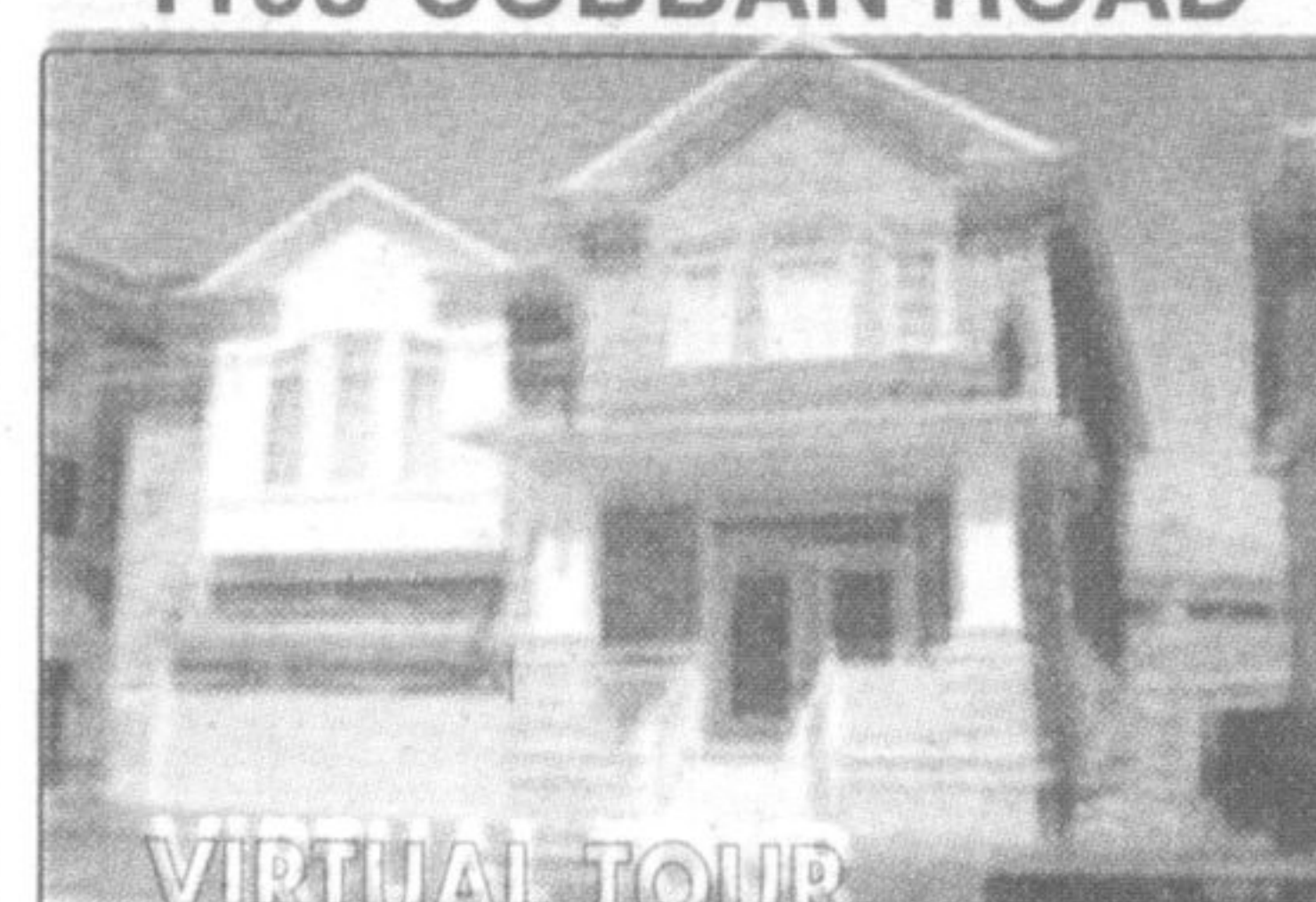


VIRTUAL TOUR

MOVE INTO THE RITZ

Fabulous "Ritz" model townhome featuring 1865 sq. ft. of finished living space on 3 levels. Bright eat-in kit with adj. breakfast area w/ patio doors to backyard. Large LR & adj. DR. Master bdrm ensuite & upper sitting/computer alcove + generous sized bedrooms. Finished lower level w/ FR. \$264,900.

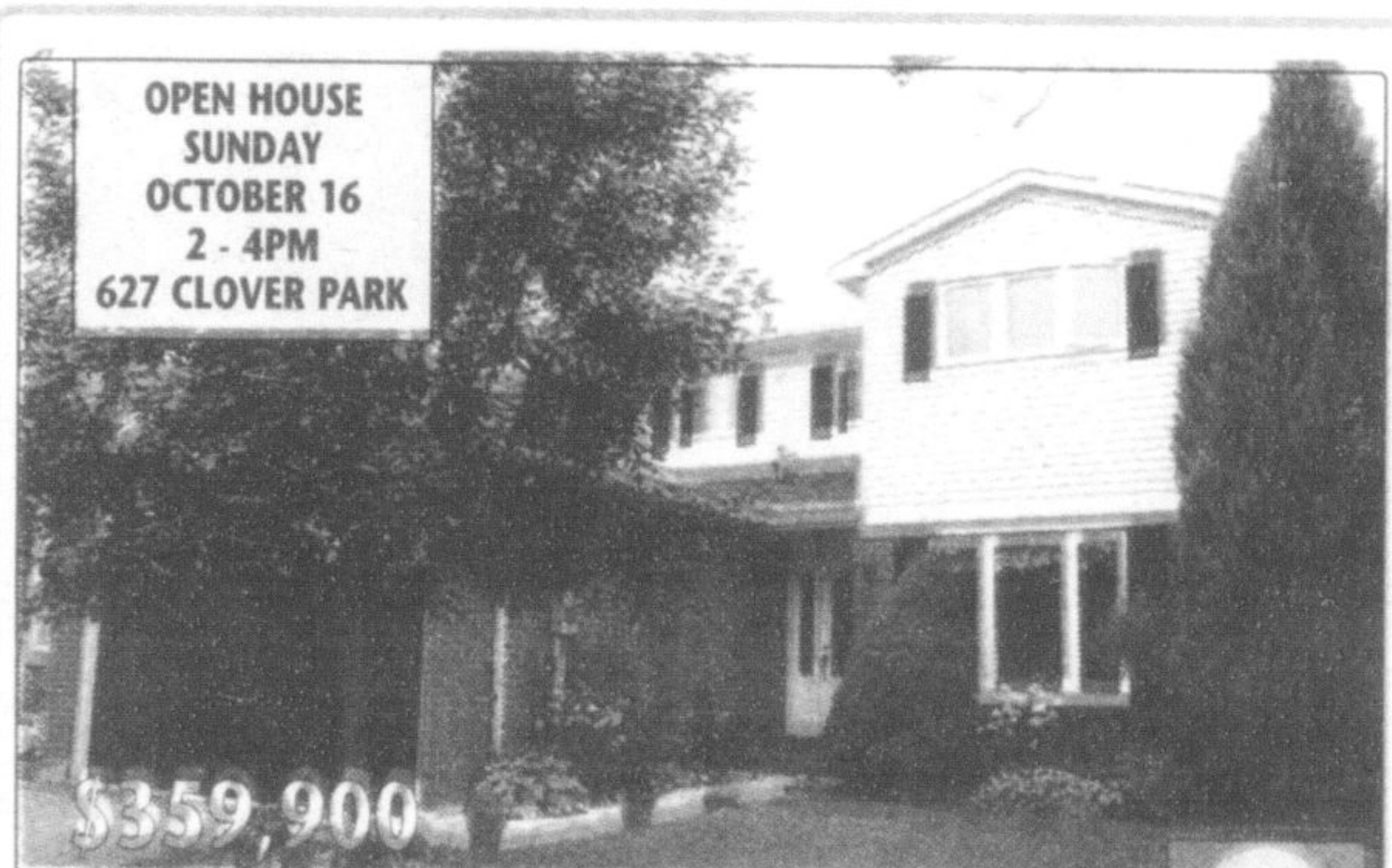
1193 COBBAN ROAD



VIRTUAL TOUR

TIFFANY DELIGHT

Absolutely stunning 4 bedroom brick home (2900 sq.ft.) Featuring double entrance doors, sunken foyer, upgraded hardwood floors, oak staircase, California shutters, 5 piece ensuite. Close to parks, schools, transit, shopping, quick possession. \$389,900.



OPEN HOUSE  
 SUNDAY  
 OCTOBER 16  
 2 - 4PM  
 627 CLOVER PARK

\$359,900

THIS ONE HAS IT ALL

Large 4 bdrm. Main floor family room & laundry, separate dining room, eat in kitchen with lots of windows. Large master bdrm with full ensuite. Many inclusions. Call...



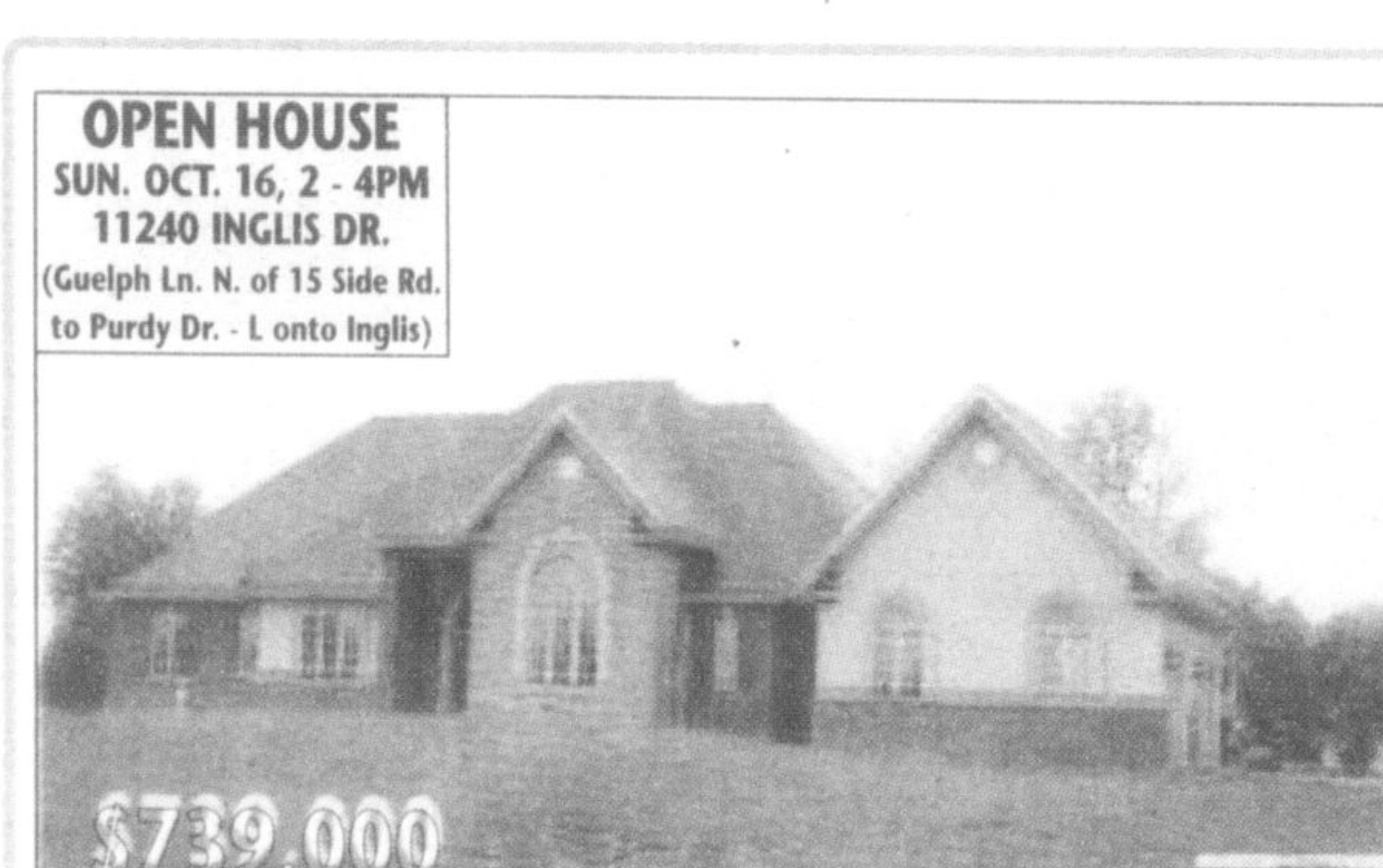
PRUDENTIAL TOWN CENTRE REALTY  
 Peter Fuller, Sales Associate 905-878-9100



\$174,900

WELCOME TO 328 WILSON DR., MILTON.

This comfortable end unit townhome is located in a safe neighbourhood close to schools & playground & includes 2 baths, 3 + 1 bedrooms, cozy rec. room & sliding glass doors to a deck. It will not last long priced to sell at \$174,900 To book your personal viewing, contact Theresa Keates or visit www.theresakeates.com today!



OPEN HOUSE  
 SUN. OCT. 16, 2 - 4PM  
 11240 INGLIS DR.  
 (Guelph Ln. N. of 15 Side Rd.  
 to Purdy Dr. - L onto Inglis)

\$739,000

\$739,000 This 2,650 sq. ft. bungalow has great curb appeal & offers 3 bedrooms, 3 baths. The open concept floorplan features high ceilings (9 ft. +), columns, a stunning kitchen with granite counters, built-in appliances & contrasting cabinetry in centre island. Oversized 2 car garage & unspoiled lower level with bright walk-up. Located on a 1.6 acre lot in desirable Churchill Estates, North Campbellville, this "boomers" bungalow is sure to please!



ROYAL LEPAGE MEADOWTOWNE REALTY, BROKER  
 Barb Laffche, Sales Representative 905-878-8101

ROYAL LEPAGE

Meadowtowne Realty, Broker  
 INDEPENDENTLY OWNED AND OPERATED



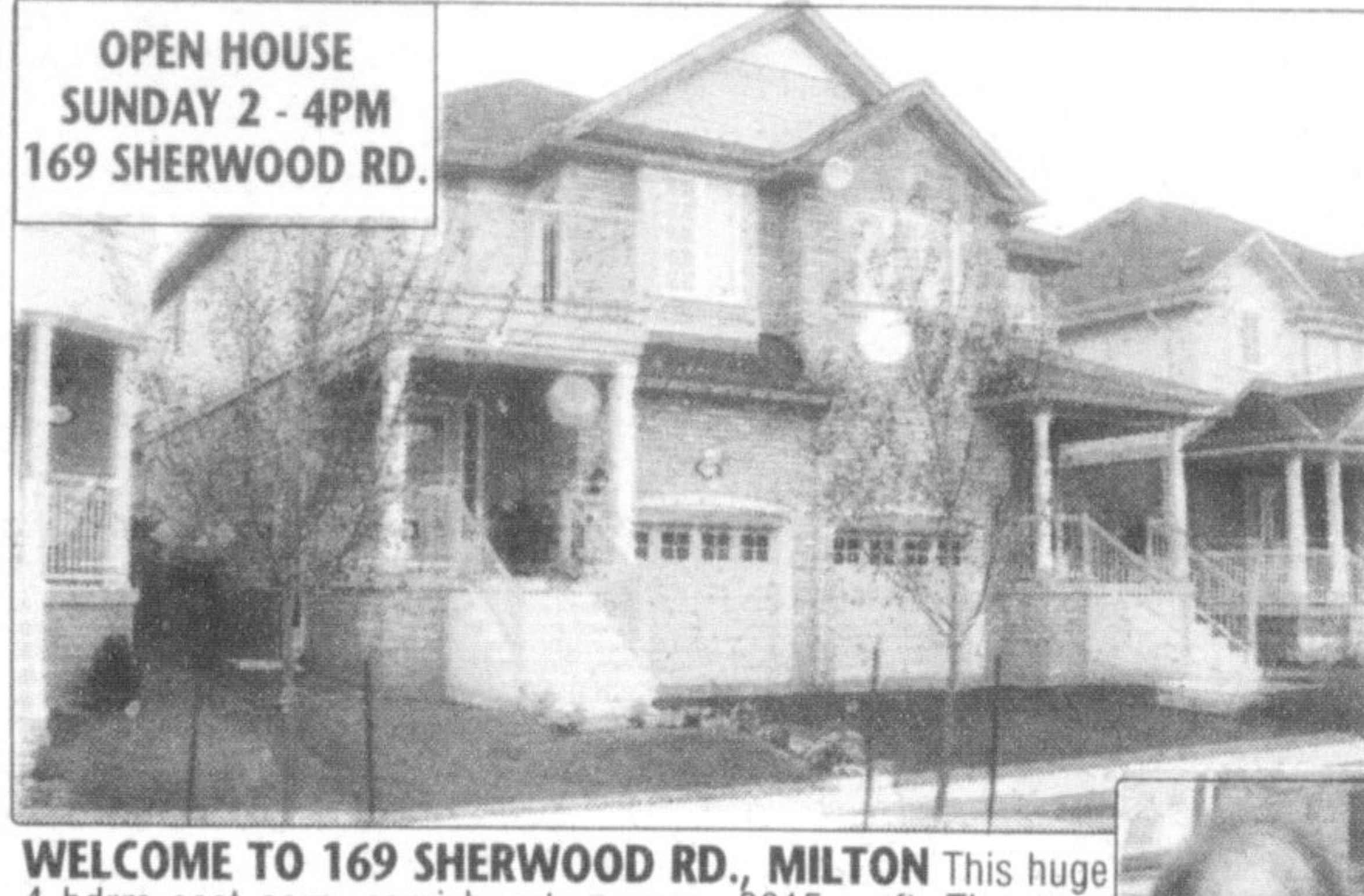
OPEN HOUSE  
 SUNDAY 2 - 4PM  
 169 SHERWOOD RD.

\$279,900

IMMACULATE SEMI Take a moment and visit this attractive three bedroom home, complete with gleaming hardwood floors. Upgraded kitchen with walkout to cedar deck and fenced yard. Large ensuite bath, central oak staircase and more. Priced to sell at \$279,900.00



RE/MAX REAL ESTATE CENTRE INC.  
 Wayne Casson, Sales Representative 905-878-7777



WELCOME TO 169 SHERWOOD RD., MILTON This huge 4 bdrm cost corp. semi boasts approx. 2015 sq.ft. The open concept design features convenient mn flr laundry rm, butlers pantry for extra storage, attractive decorative columns, upgraded ceramics in kitch & baths, his & her's walk in closets, 4 pc mstr ensuite with roman faucets & step up bath, romantic front balcony, central vac, CAC, door entry from garage, oak rails & spindles, alarm system & fully fenced back yard. To book your personal viewing, contact Theresa Keates or visit www.theresakeates.com today!



RE/MAX REAL ESTATE CENTRE INC.  
 Theresa Keates, Sales Representative 905-878-7777



OPEN HOUSE  
 SATURDAY & SUNDAY  
 2 - 4 PM  
 866 SHEPHERD PL.  
 (DERRY & TRUDEAU  
 TO CLARK)

\$274,900

BEAUTIFUL MATTAMY SEMI IN HAWTHORNE VILLAGE

1,500+ sq. ft., 3 bedrooms, hardwood floor on main floor, upgraded tiles throughout, large basement windows, deck, quick closing. Priced to sell at \$274,900. Call Cheryl at 416-570-9188.

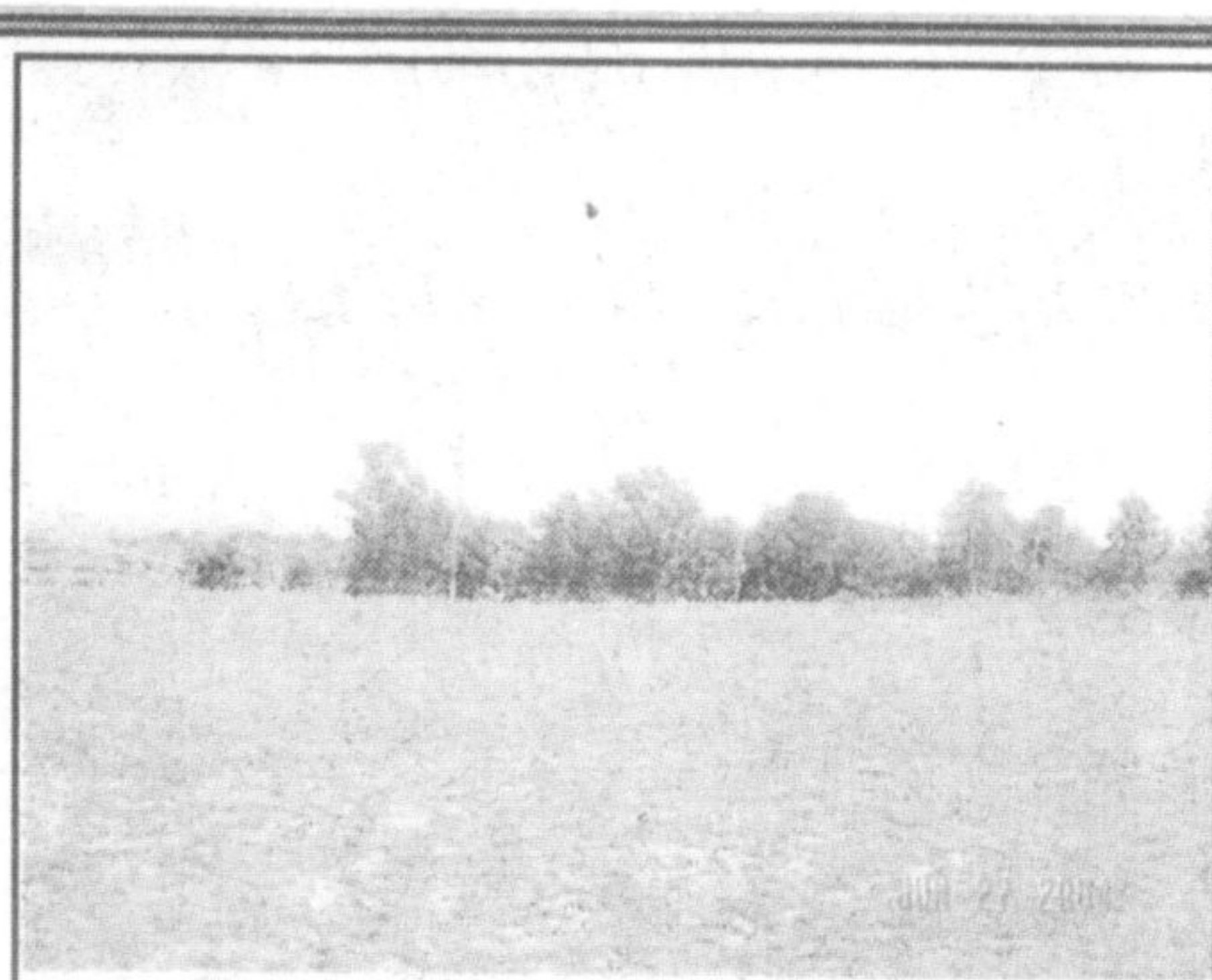
RE/MAX PERFORMANCE REALTY INC.  
 CHERYL BURNS, Sales Rep. 905-270-2000



EXCLUSIVE LISTING

GREAT INVESTMENT OPPORTUNITY!  
 25 acres of Flat & Clear Land, GREAT INVESTMENT OPPORTUNITY! Exclusive listing - call Effie Dimou for details. 38 stalls, 8 paddocks & indoor arena. 3 bdrm. home extensively renovated with addition that has sep. ent. This won't last! Call me direct at 416-991-4247. 12472 CHINGUACOUSY RD., CALEDON

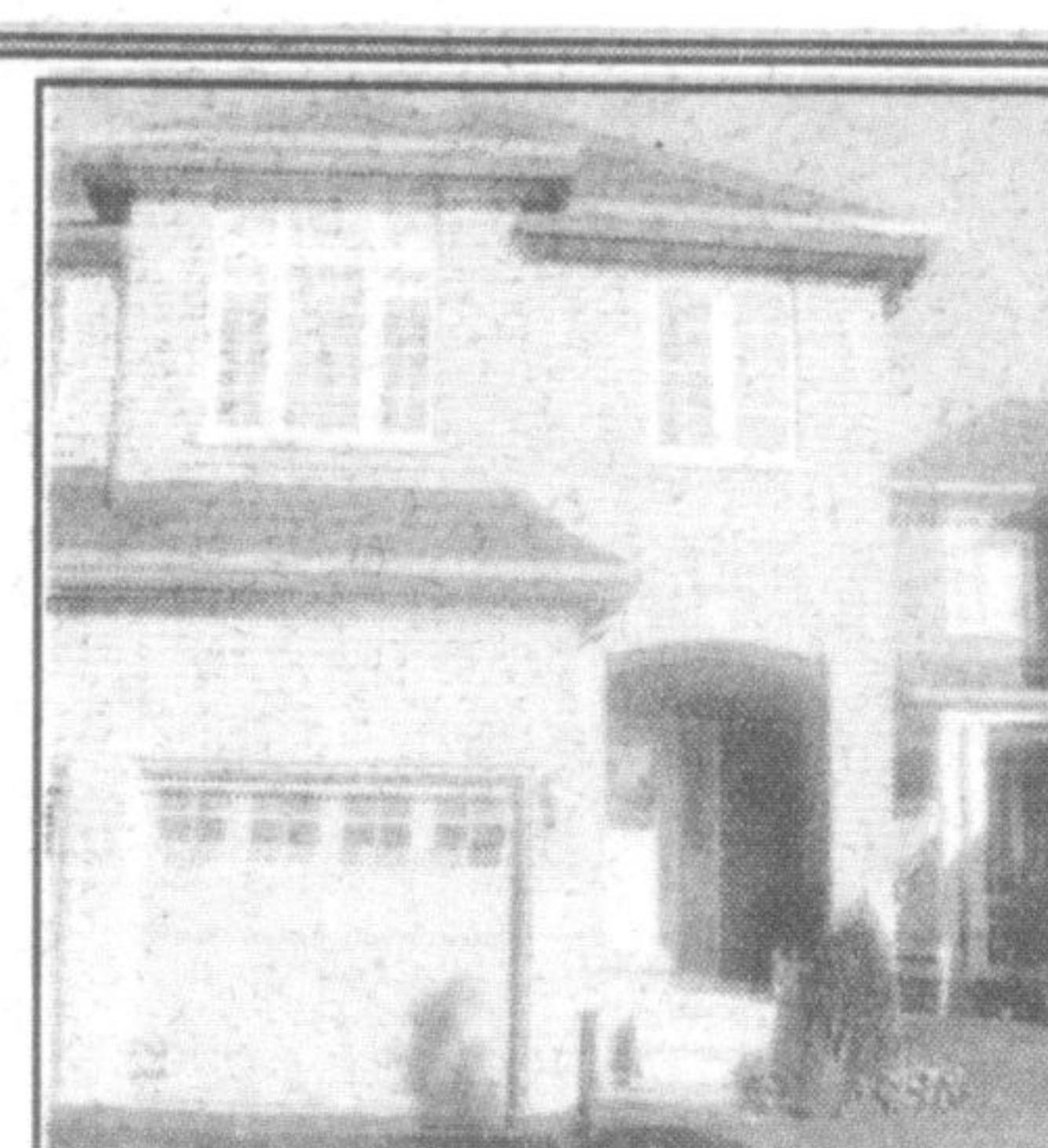
EFFIE DIMOU, SALES REP. 905-840-8400



1 ACRE DUNDAS STREET

Corner of Dundas/Brant - Burlington beauty overlooking Burlington.

RE/MAX PERFORMANCE REALTY INC.



3247 APRICOT ROAD

Semi detached sold in less than a week. 98% of list price. YOU COULD BE NEXT!



36 WEBSTER WAY

Sold in 1 day above list price - WHAT ARE YOU WAITING FOR? Call Effie Dimou to list your home.