



## Old-stars showdown

At left, Acton Neanderthals' Elmer Dunn battles Milton Moose Heads' Mike Braets for possession during 35-and-up championship play at last weekend's Milton Old Stars' Fall Harvest Hockey Classic at Milton Sports Centre. Above, a Moose Head player tries to hook onto Acton's Scott Brooks. Acton won 5-2. Among the tournament's other local teams, Tim Hortons lost 3-2 to Vinny's in the 40-and-up finals, while the M&G Wings fell to the Mississauga Old Bucks 7-1 in one of the 50-and-up finals.

Photos by GRAHAM PAINE

## AE atoms even record

Milton's AE major atoms evened their record to convincing fashion Wednesday night — thumping the host Orangeville Flyers 6-2.

Kyle Waters tallied twice, while also standing out with three assists apiece were Marcello Mule and call-up Mathew Bergman. Matthew Levins, Zach Wadham and AP Corey Macdonald contributed a goal and an assist each, while Robert Manning also lit the lamp.

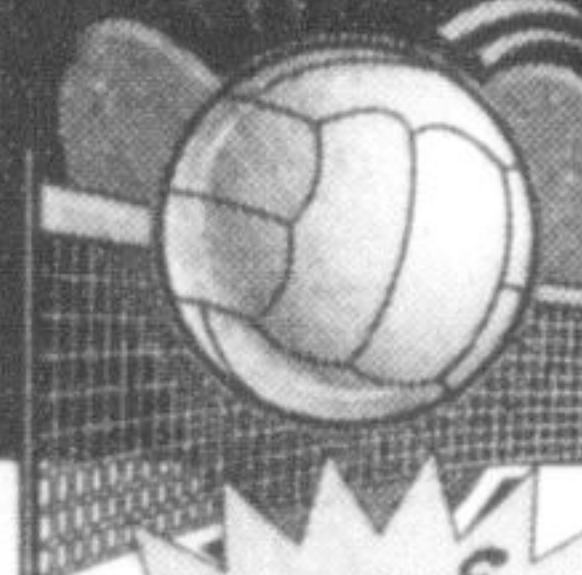


Backstopping the Winterhawks to victory was Tristan Kivac.

The decisive victory came on the heels of Saturday's 5-2 loss to Georgetown in home-opening play.

Bergman factored into both goals, scoring on himself and setting up Waters for the initial tally. Mack Mindenhall was solid between the pipes.

The AE atoms are back in action Tuesday evening in Ancaster.



**VOLLEYBALL ADULT LEAGUES  
URBAN SPORTS CLUB**

Teams & individuals of all levels welcome!  
Sign Up Today!

**CO-ED ADULT VOLLEYBALL LEAGUES  
Milton at E.W. Foster School**

Thursday nights between  
8 & 10 pm Oct 13 to Dec 15

**905.407.GAME • info@urbansports.ca  
www.urbansports.ca**

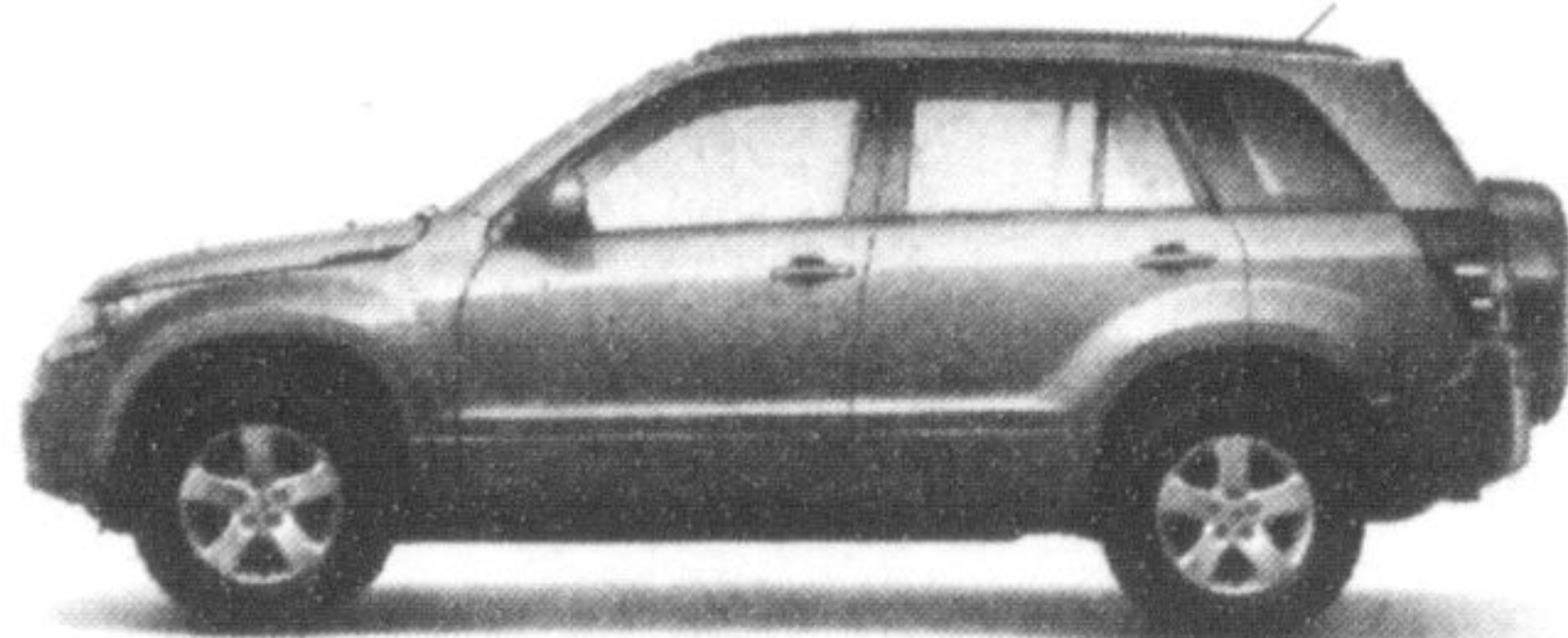
A car shouldn't put you into debt. That's what mortgages and tuitions are for.

**2006 GRAND VITARA**  
Four-wheel independent suspension.  
Full-time four-wheel drive system.  
185 horsepower V6 engine.  
Standard antilock braking system (ABS).

Lease from

**\$299\*\*/month for 48 months.**  
**2.8% APR**

Freight and P.D.E. included. \$0 security deposit. **MSRP: From \$24,495\***



DEALER NAME, ADDRESS, PHONE NUMBER AND WEBSITE GO HERE

**SUZUKI**  
Way of Life!

www.GrandVitara.ca

CONSUMERS SHOULD READ THE FOLLOWING: The illustrated vehicle may include certain optional equipment such as aluminum wheels and fog lamps subject to additional cost. Lease cost and M.S.R.P. of the vehicle shown may then be different from the ones indicated above. \*M.S.R.P. for the 2006 Grand Vitara JA with manual transmission (model LLN81NG). Freight and P.D.E. (\$995), registration fee, license, insurance, administration fees and applicable taxes are not included. \*\*Limited time offer to qualified retail customers on approved credit (O.A.C.) available through FinancialLinx to lease a new 2006 Grand Vitara JA with manual transmission (model LLN81NG). The lease payment is based on a 48-month term at \$299 per month (total lease obligation \$16,446.93 including down payment) with 80,000 km total mileage allowance (\$0.10/km for excess mileage). Annual lease rate is 2.8% with \$2,100 down payment or equivalent trade-in. First month's lease payment is required at lease inception. Lease payments include freight and P.D.E. (\$995). This offer does not include license, insurance, acquisition fees of \$350, administration fee, PPSA of \$48 + taxes and any applicable taxes. Certain dealers may lease or sell for less. See participating dealers for details.

**SUZUKI SUMMER RALLY DAYS**



†IIHS Highest Crash Test Rating

### 2005 SUZUKI AERIO SEDAN AT

ABS, Automatic Transmission, Power Windows/Locks/ Heated Mirrors, Driver and Front Passenger Advanced Airbags, Driver and Front Passenger Side Airbags, Climate Control Air Conditioning, Powerful 155 HP, Floor Mats, AM/FM/CD Player with 6 Speakers and Steering Wheel Mounted Audio Controls, Cruise Control, Remote Keyless Entry with Panic Function, Power Outlet, Seating for 5, Height Adjustable Driver's Seat, Tilt Steering, Full Tank of Gas Included.

Cash Purchase Price.

**\$15,995\***

\*Cash Purchase Price offer on all 2005 Suzuki Aerio Sedan AT vehicles includes discounts or other incentives available on cash purchases only and may not be combined with any other offers. Cash Purchase Price does not include freight and P.D.E. (\$995). Dealer may sell for less. Cash Purchase Price offer does not include, license, insurance, acquisition fees, administration fee, security registration fees and any applicable taxes. Recent university or college graduates may be eligible for an allowance of up to \$750 on certain models. These are limited time offers and cannot be combined with any other offer. See participating dealer for details. †Vehicle may not be exactly as shown. †The IIHS has awarded the 2005 Suzuki Aerio with the highest crash-test rating for the 64 km/h offset frontal impact test.

**SUZUKI of Oakville**

2219 Wyecroft Road, Oakville, ON, L67 5L7

905-469-2429 • 1-866-229-3897 • fax 905-469-4562

www.suzukioakville.com

LIMITED TIME OFFER.

