

"The business that considers itself immune to the necessity for advertising sooner or later finds itself immune to business."

Derby Brown

Dateline

• from DATELINE on page A16

The United Way of Milton holds its **Community Priorities Consultation** from 7 to 9 p.m. at Hugh Foster Hall, beside Town Hall Victoria Park. The purpose of these discussions is to determine the top issues of concern within the community. For more information, call Susan Lynch at (905) 875-2550.

The Ontario Early Years Centre holds its free **Adult and Child Drop-in** at Milton Mall near the food court from 10:30 a.m. to noon for kids up to six years old. For more information on the informal playtime, call (905) 876-1244, ext. 22.

The **Milton Choristers** invites singers of all ages to see what it's all about at its rehearsal at 7:30 p.m. at Knox Presbyterian Church, 170 Main St. E. For more information, call (905) 876-3203.

Milton District Hospital holds a **breast-feeding clinic** with a certified lactation consultant from 9:30 to 11:30 a.m. For more information or to make an appointment, call Jean Gallen at (905) 878-2383, ext. 7030.

Help for Parents, a Halton parent support group, meets in the evening in the basement of the church at 5720 New St. in Burlington. This non-denominational self-support group helps parents of children who are in trouble at home, at school or with the law or who are abusive or taking drugs. The group is a member of Association of Parent Support Groups in Ontario. For more information, call 1-800-488-5666 or visit www.apsgo.ca.

Calling New Parents, a free program for parents and babies aged 6 months and younger, meets with a public health nurse

to discuss parenting and infant care. The group meets at the Ontario Early Years Centre, 917 Nipissing Rd., from 1:30 to 3:30 p.m. For more information, call (905) 825-6000, ext. 7299.

Wellspring Halton-Peel, a support group for cancer patients and their families, holds its **Gentle Yoga program** from 1:30 to 3 p.m. at 2545 Sixth Line in Oakville. For more information, call (905) 257-1988.

Improve communication and leadership skills with the **Milton Toastmasters**. Everyone is welcome to attend the meeting at the Royal Canadian Legion, 21 Charles St. (upper level), at 7:30 p.m. For information, call Allan Lahue at (905) 877-3441.

The Women's Centre, suite 210 in Hopedale Mall at Rebecca Street and Third Line, in Oakville holds its free **Peer Counselling** by volunteers in person or

over the phone from 10 a.m. to 3 p.m. for women facing abuse, grief/loss and relationship issues. For more information or to register, call (905) 847-5520.

Community Living North Halton holds its 10th annual **Golf Tournament** at Eagle Ridge golf course in Georgetown. To participate as a golfer, sponsor or gift donor, call Carol at (905) 878-2337, ext. 22.

The Milton Seniors' Activity Centre, 500 Childs Dr., holds its **Evening Euchre Party** at 7:30 p.m. The cost is \$2.50. Its **Downsizers Weight Loss Club** is held at 10 a.m. The cost is \$2 for members and \$4 for non-members. For more information, call (905) 875-1681.

Ebenezer United Church, 12274 Guelph Line, north of Brookville, hosts its **Seniors and Wannabees soup and sandwich luncheon** followed by cards and games at 12:30 p.m. Everyone's welcome. For more information, call Willy at (519) 853-3043.

Wednesday Sept. 21

The United Way of Milton holds its **Community Priorities Consultation** from 7 to 9 p.m. at Milton Sports Centre, 605 Santa Maria Blvd. The purpose of these discussions is to determine the top issues of concern within the community. For more information, call Susan Lynch at (905) 875-2550.

Halton Healthcare Services hosts a free **seminar on prostate cancer** at Oakville-Trafalgar Memorial Hospital from 7 to 9 p.m. To reserve a seat, call (905) 338-4379 or e-mail elittle@haltonhealthcare.on.ca.

VON Alzheimer Services continues its free **Dementia Information Series for Family Caregivers** from 7 to 9 p.m. at VON Halton in Sheridan College, 1430 Trafalgar Rd., in Oakville (enter from Ceremonial Drive). To register, call (905) 847-9559.

Halton Community Legal Services — a not-for-profit legal office serving low income residents in Halton — holds its **annual general meeting** at 7 p.m. at 72 Mill St., in Georgetown. Everyone's welcome to attend. Volunteer board members are needed. For more information, call (905) 875-2069.

The Women's Centre, suite 210 in Hopedale Mall at Rebecca Street and Third Line, in Oakville holds its free **Abuse Support Group** from 6 to 8 p.m. To register or for more information, call (905) 847-5520.

Milton Meals on Wheels holds a **luncheon** at 11:30 a.m. at 80 Ontario St. N. The cost is \$5 for a hot meal. Transportation and assistance can be arranged for those who require it. For more information or to reserve a seat, call (905) 878-6699.

The Milton Seniors' Activity Centre, 500 Childs Dr., holds a **free seminar** entitled 'How Safe are You in Your Home?' in the centre's auditorium at 12:30 p.m. together with Seniors and Law Enforcement Together (SALT), a Halton Regional Police task force. **Contract bridge** takes place at 9:30 a.m. and **shuffleboard** is held from 1:30 to 3:30 p.m. The cost of each of these activities is \$2 for members and \$4 for non-members. Its **Wednesday Lunch Counter** includes a salad, entrée, dessert and beverage for \$6. Sign up at the reception desk or phone in your order in advance. For more information, call (905) 875-1681.

Thursday Sept. 22

The Halton branch of the Schizophrenia Society of Ontario holds its drop-in **family support group** for friends and family members affected by schizophrenia and other serious mental illnesses at 7 p.m. in

• see more DATELINE on page A33

HYUNDAI
OF OAKVILLE



THE ONLY KIND OF A DEAL WE BELIEVE IN
IS A **REAL ONE**

\$22,900*
OVER EQUIPPED

2.9%†

purchase financing up to 48 months

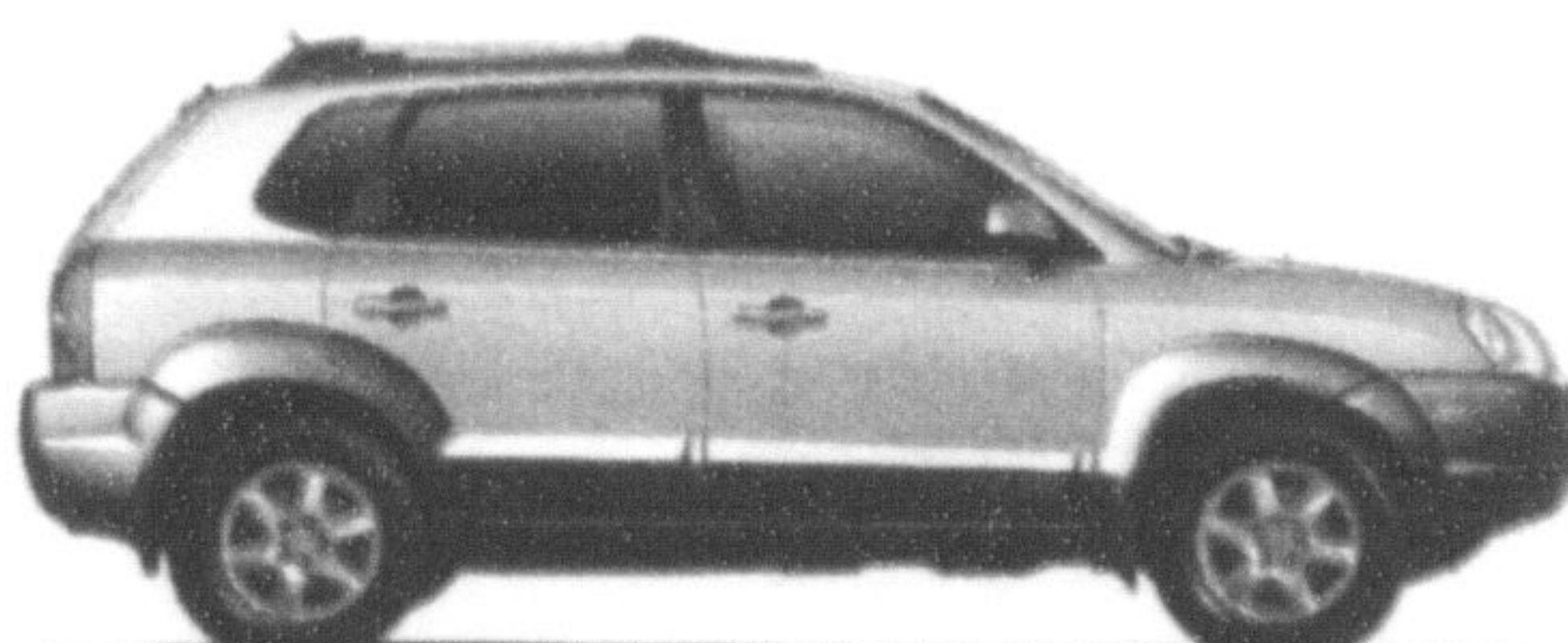


2006 SONATA GL 1.4 AUTO

LEASE FROM **\$189***
OR **0%†**

Per Mth. 60 Mth - \$2995 Down
\$0 Security Deposit

purchase financing up to 48 months



2005 TUCSON GL FWD
MSRP \$19,995*

5-5-5 WARRANTY
5 YEAR/100,000 KM
COMPREHENSIVE LIMITED* - ROADSIDE ASSISTANCE** - POWERTRAIN

ALL HYUNDAI WARRANTIES HAVE NO DEDUCTIBLE. †† Includes fuel delivery service, flat tire change, lock-out service, towing service and more. Just one toll-free call away, 24 hours a day.

HYUNDAI LICENCE TO GRIN
Drive your way

THE **REAL DEAL**

HYUNDAI
OF OAKVILLE



1071 Speers Road
905-845-7791
www.hyundaiioakville.com

*Some photos may not depict vehicle price featured. 2006 Sonata GL 1.4 Auto MSRP from \$22,900. MSRP price excludes freight (\$799) dealer administration fee, license, P.D.E. and all applicable taxes. Dealer admin and P.D.E. fees vary by dealer. Contact your Dealer for details. †2.9% purchase financing available on 2006 Sonata model O.A.C. for 48-month terms. Financing example: \$15,000 at 2.9% per annum equals \$331.35 per month for 48 months. C.O.B. is \$904.91 for a total obligation of \$15,904.91. Leasing offers available on approved credit from Hyundai Financial Services based on new 2005 Tucson GL 1.4 FWD MSRP from \$19,995 annual interest rate of 3.68%, \$189 per month for a 60 month walk-away lease. Total lease obligation of \$14,335 and optional purchase price of \$7,963. All applicable taxes, dealer administration fee, license, PPSA (\$50) and \$350 lease acquisition fee extra. Dealer admin fees vary by dealer. Contact your Dealer for details of their admin fees. Down payment of \$2,995 plus first monthly payment required. \$0 security deposit on all models. Freight (\$799) and P.D.E. excluded for Tucson. 20,000 km allowance per year applies. Additional charge of \$0.10/km. **2005 Tucson GL 1.4 FWD MSRP from \$19,995. MSRP price excludes freight (\$799) for Tucson, dealer administration fee, license, P.D.E. and all applicable taxes. Dealer admin and P.D.E. fees vary by dealer. Contact your Dealer for details of their admin and P.D.E. fees. Dealer order may be required on Tucson GL 1.4 FWD. †0% purchase financing available on Tucson GL models indicated O.A.C. for 48-month terms. Financing example: \$15,000 at 0% per annum equals \$312.50 per month for 48 months. C.O.B. is \$0.0 for a total obligation of \$15,000. Dealers are free to set individual prices, all offers are for a limited time - see Dealer for details. Offers expire August 31, 2005. Hyundai's Comprehensive Limited Warranty coverage covers most vehicle components against defects in workmanship under normal use and maintenance conditions effective for vehicles sold on or after March 22, 2004.