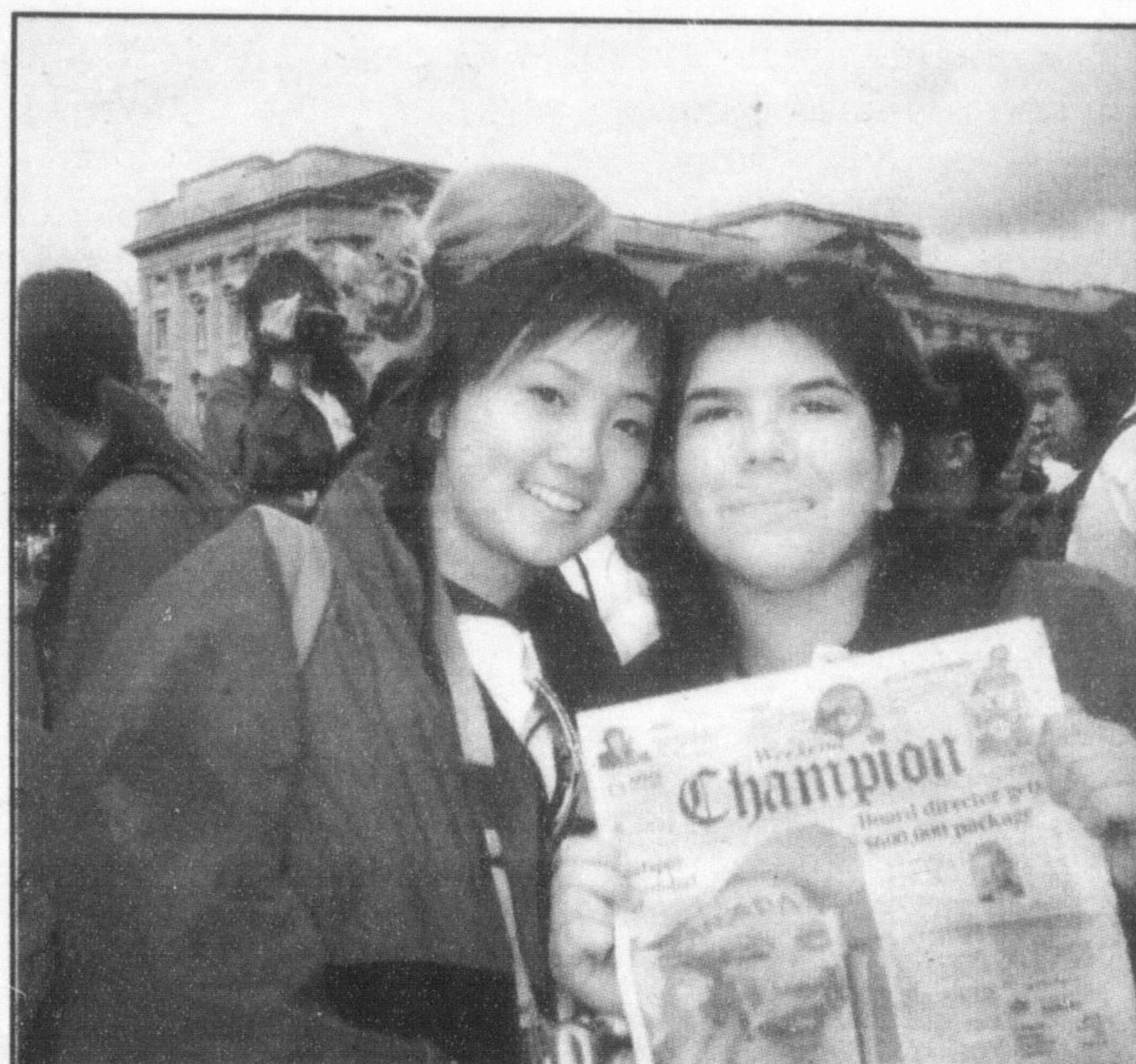


# Champion Tracks



Above, Sheila McBryde holds a copy of The Champion in front of the Sphinx in Egypt. At left, Miltonians (from left) Cody South, Barb Fuller, Brooklyn Ryder, Bryanna South and Carl Ryder visit Walt Disney World's Magic Kingdom in Florida. Below, Rebecca Bell (right) checks out Buckingham Palace in London, England with choir member friend Cleone Ye.



**Parents of children 2 to 14 yrs old with asthma are invited to join a six week asthma research study.**

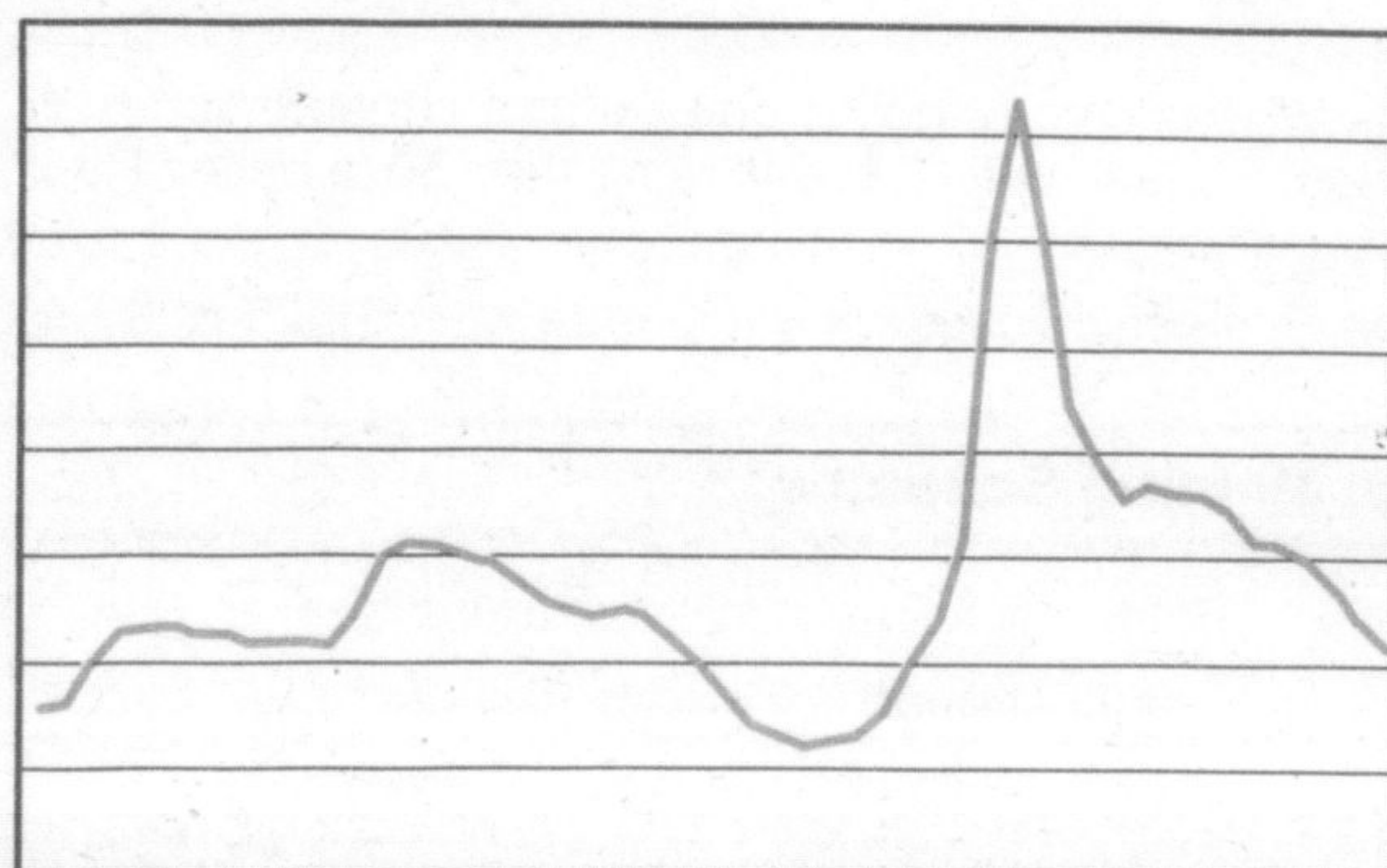


**Research Question:**

Will SINGULAIR® help reduce the number of asthma flare-ups in children in the fall?

**If your child is not taking Singulair**

CALL NOW for more information  
(905) 522-1155, ext. 5091 or 5228  
St. Joseph's Healthcare, Hamilton  
Toll Free: 1-888-748-4743



Peak shows flare-ups in September compared to other times of the year

## Healthcare Careers4Ontario HANDBOOK

Promoting Healthcare Careers & Career Training Opportunities in Ontario

**50,000 COPIES**

Targeted distribution in Ontario

**COMING the week of September 26, 2005!**

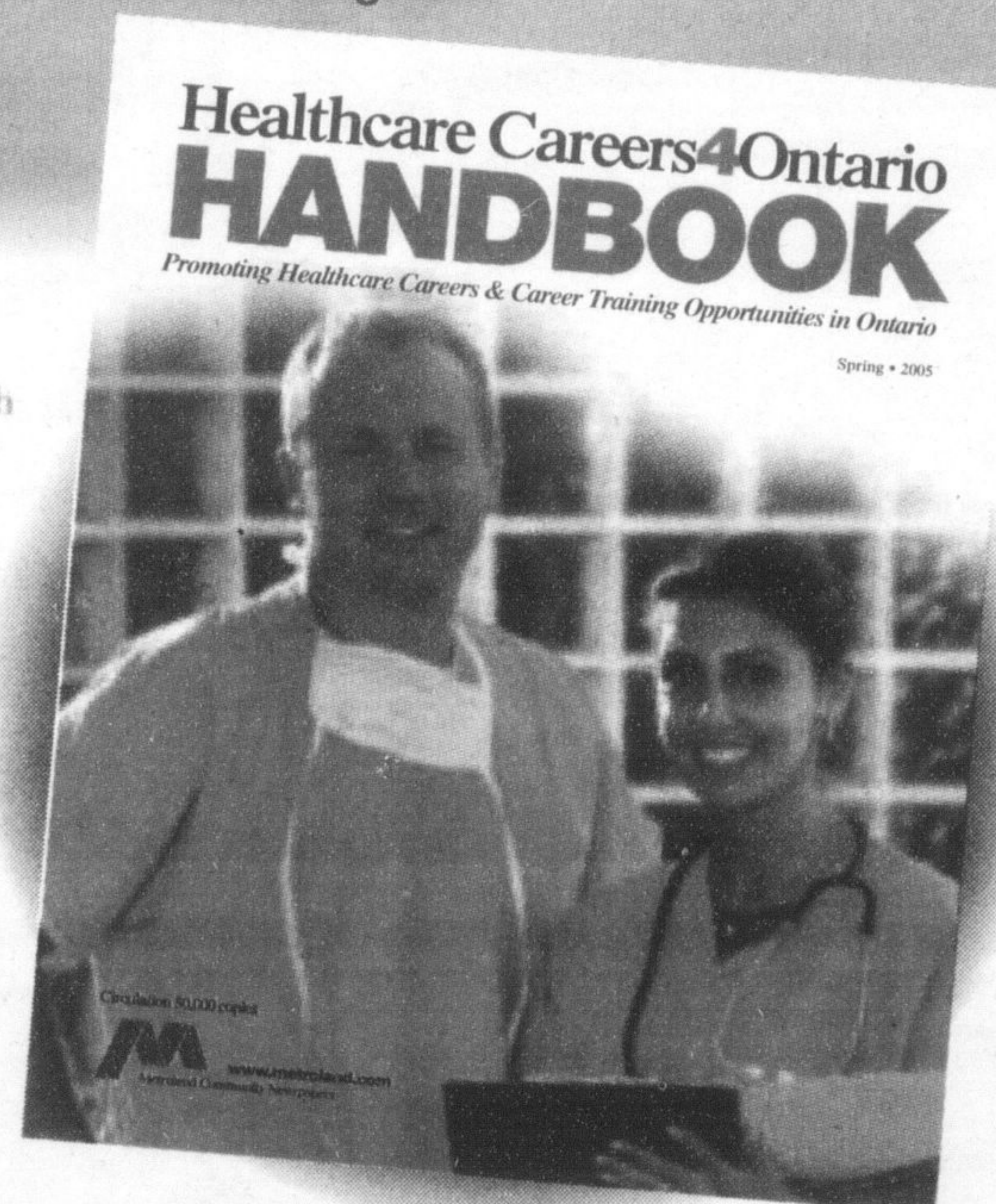
Promoted in over 50 Metroland Community Newspapers and in the Fall Issue of Career Choices 2005 Career and Education Magazine

Silver Publication Sponsor:

**Bayshore**  
Home Health

**BOOKING AND MATERIAL DEADLINE:**  
Friday, September 16, 2005

To reserve your space, call:



416-493-1300 ext. 276, 288, 237  
careers4ontario@metroland.com

Metroland Printing, Publishing and Distributing Ltd.

METROLAND PRINTING PUBLISHING & DISTRIBUTING LTD. • 10 TEMPO AVE. • WILLOWDALE, ON • M2H 2N8

**Kick Up Your Heels!**



Breast Cancer Support Services Inc.

party in **Pink**

BY women FOR women

Friday, October 14th, 2005 • 6:30 p.m.  
Holiday Inn Burlington, Hotel & Conference Center  
3063 South Service Road

**Get PUMPED...and join us for:**

- Colourful Live Entertainment - featuring the Sweater Puppets
- Dancing with your gal pals (shake your *bootee*)
- Shopping in our fashionable *shoetique* and auctions
- Food, fun, and *toe-tapping* raffles all in support of

**Breast Cancer Support Services**

Tickets go on sale **September 6, 2005** and will sell out fast!

Hosted by CityTV's Anne Mroczkowski  
\$60.00

905.634.2333 or 905.632.2271

www.partyinpink.ca www.breastcancersupport.org

LANCASTER GROUP



The Canadian **Champion**

INVESTORS GROUP FINANCIAL SERVICES INC.