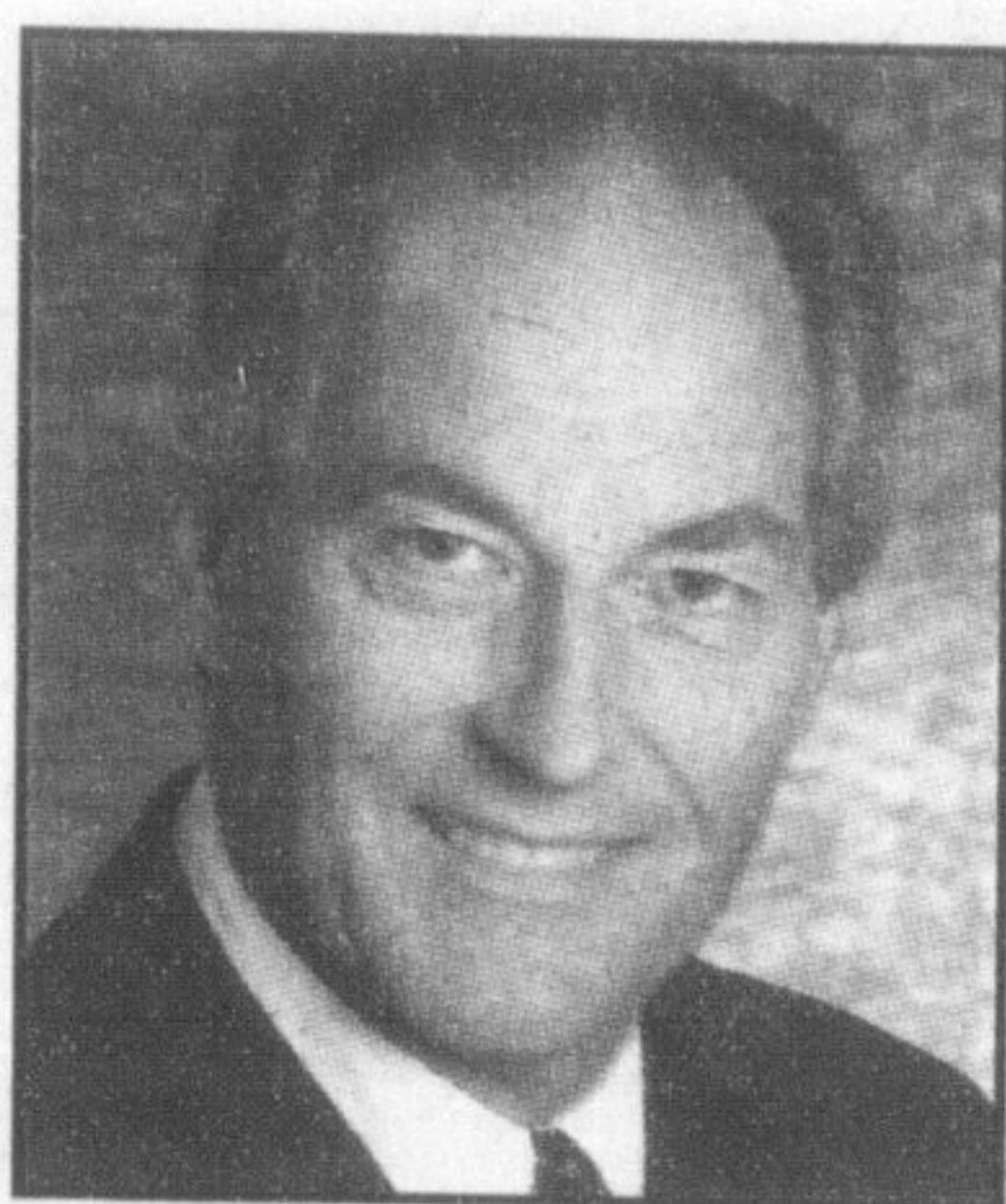


Politicians meet with farming community to discuss Mad Cow

Halton MPP Ted Chudleigh recently got a taste of what's needed in the coming months to continue supporting local beef farmers as they work to recover from the Mad Cow disease crisis.

Mr. Chudleigh met with Ontario Conservative Leader John Tory and Waterloo-Wellington MPP Ted Arnott Wednesday at the farm of Ontario Cattlemen's Association past president Ron Wooddisse to hear about the financial losses beef farmers have endured due to the closure of the



Ted Chudleigh

reaffirming the need for support from governments at all lev-

els," said Mr. Arnott. "Our farm leaders need to know we're in this with them and we'll continue to support them. As MPPs representing rural areas, we need to set aside partisan differences when our farm families are struggling through a crisis."

He went on to give Mr. Wooddisse and the Cattlemen's Association credit for keeping the Mad Cow issue at the forefront and for pushing when necessary to represent farmers' needs and interests.

United States' border to Ontario's beef imports. "Our meeting accomplished a lot in terms of continued support from governments at all lev-

Watch artists at work

Crawford Lake Conservation Area invites the whole family to experience a living, breathing art show.

Visitors are given the opportunity to watch artists work in the 'Crawford Lake through the Eyes of an Artist' exhibit, which began yesterday and continues until Sunday.

The event takes place from 10 a.m. to 4 p.m. each day and includes an exhibit featuring local artists Marion Detlor, Barbara Jones, Eileen Menzel, Jenny Panda, Christine Proctor, Terry Rammell and Linda Roe.

Visitors are invited to interact with the artists, who are creating new pieces inspired by Crawford Lake in the studio located in the renovated Gathering Place. Existing works by the artists are also on display and for sale.

All activities are included with the cost of admission.

Crawford Lake Conservation Area is located at the corner of Steeles Avenue and Guelph Line.

For more information, call (905) 854-0234 or visit www.conservationhalton.on.ca.

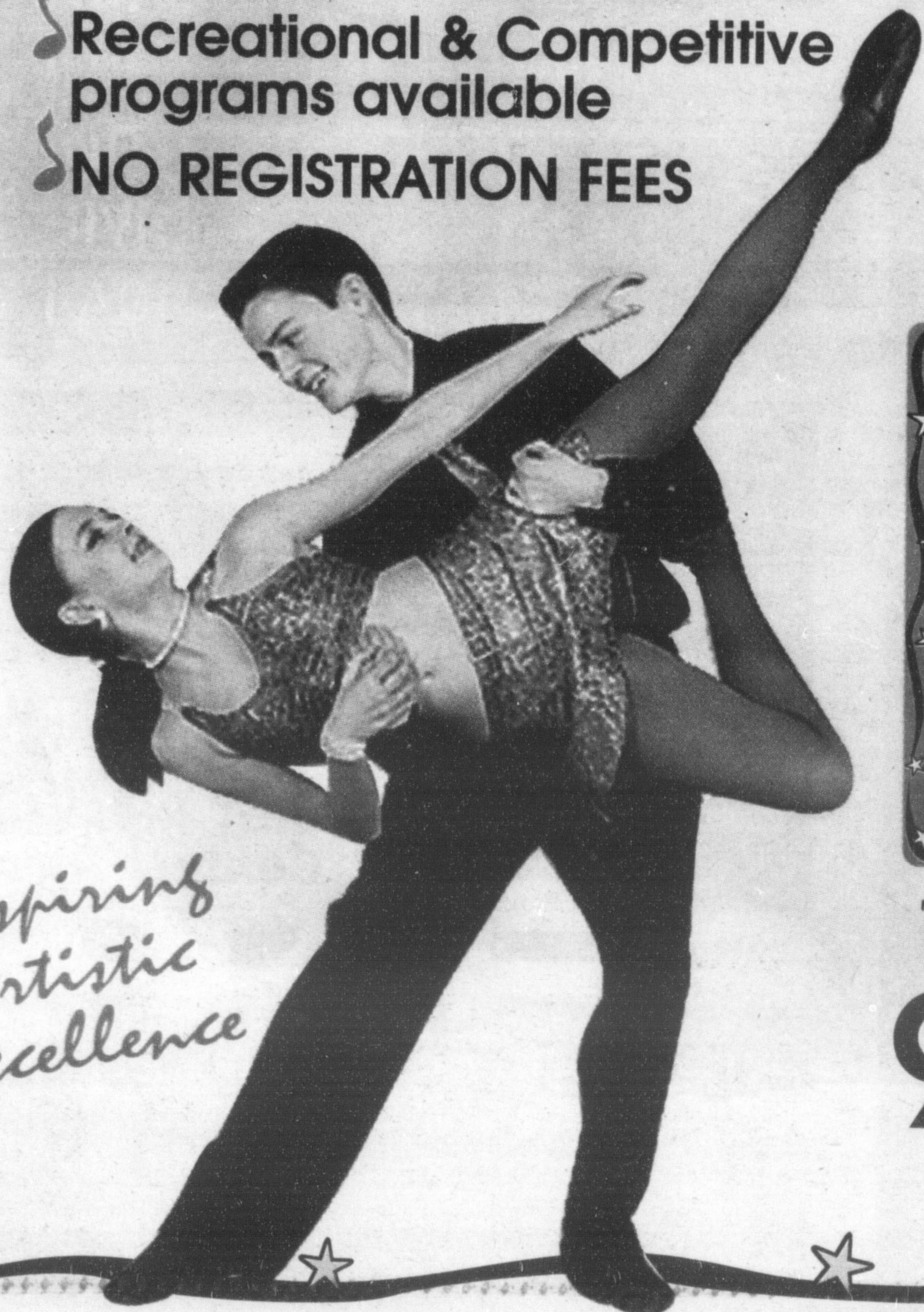


Dance Elite

STUDIO FOR THE ARTS

- ♪ Dance Classes ~ Ages 2 to Adult
- ♪ New Program: Triple Threat Music Theatre Sing~Dance~Act
- Classes for the Whole Family (Ages 7-Adult)
- ♪ Ballroom
- ♪ Yoga
- ♪ Private & Group Vocal Classes
- ♪ BOYS 1/2 PRICE
- ♪ Recreational & Competitive programs available
- ♪ NO REGISTRATION FEES

Motivating young minds to be the best they can be



Inspiring Artistic Excellence

FALL REGISTRATION

Aug. 18 3-8pm

Aug. 29 - Sept. 1 .. 1-7pm

Sept. 6 - 8 1-7pm

at the studio

180 Nipissing Road, Units #5-8

905.878.5736

www.danceelite.ca