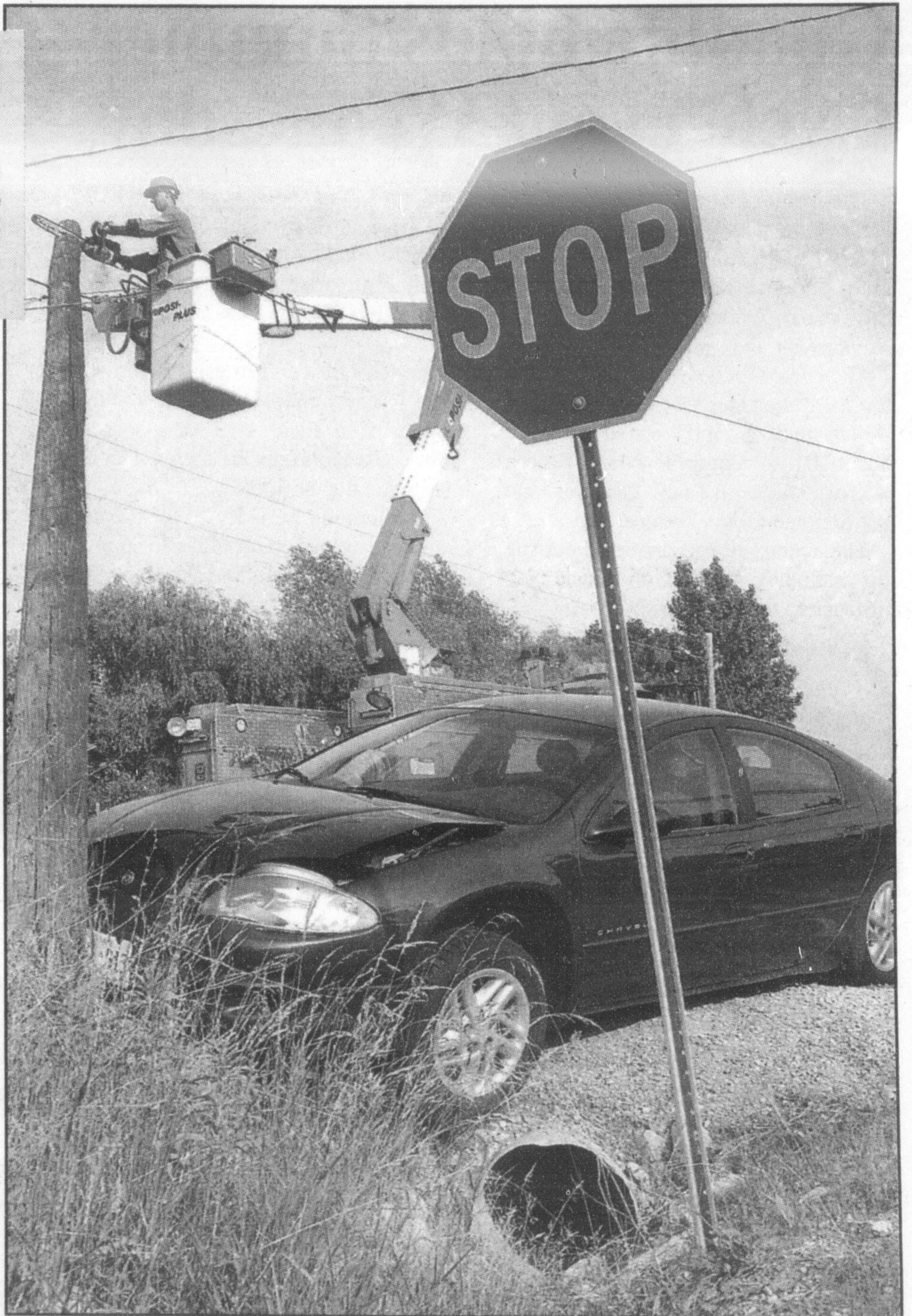


✓ Clean-up crew

Hydro crews work to remove a downed hydro pole and wires off of a Chrysler Intrepid that crashed into the pole after missing another vehicle at Steeles Avenue and Tremaine Road late Monday afternoon. There were no injuries caused by the accident, which resulted in a traffic violation charge for the driver of the Intrepid, a 37-year-old Oakville woman.

Photo by GRAHAM PAINE



The Regional
Municipality of Halton
A Partnership That Works!

Halton
A World Class Place To Be

Canada's Top
100
Employers
2005
FEATURED IN MACLEAN'S

PUBLIC NOTICE

Steeles Avenue (Regional Road 8) at Fifth Line (N) Intersection Re-alignment and Road Works Town Of Halton Hills

The Planning and Public Works Committee for the Regional Municipality of Halton proposes at its meeting on Wednesday, July 6th, 2005 to recommend to Regional Council at its meeting of Wednesday, July 13th, 2005 to pass a by-law pursuant to the Municipal Act, S.O. 2001, Chapter 25, as amended, for the re-alignment of the existing T-intersection of Fifth Line (N) at Steeles Avenue (Regional Road 8) and the construction of an eastbound left-turn lane, in the Town of Halton Hills. These road improvements are required to service the proposed development of the lands north of Steeles Avenue (Regional Road 8) in conjunction with the approved Highway 401 Integrated Planning Project and Official Plan Amendment, Town of Halton Hills. As a result of this re-alignment, the existing intersection of Fifth Line (N) at Steeles Avenue (Regional Road 8) will be closed when the new intersection is completed and opened to traffic.

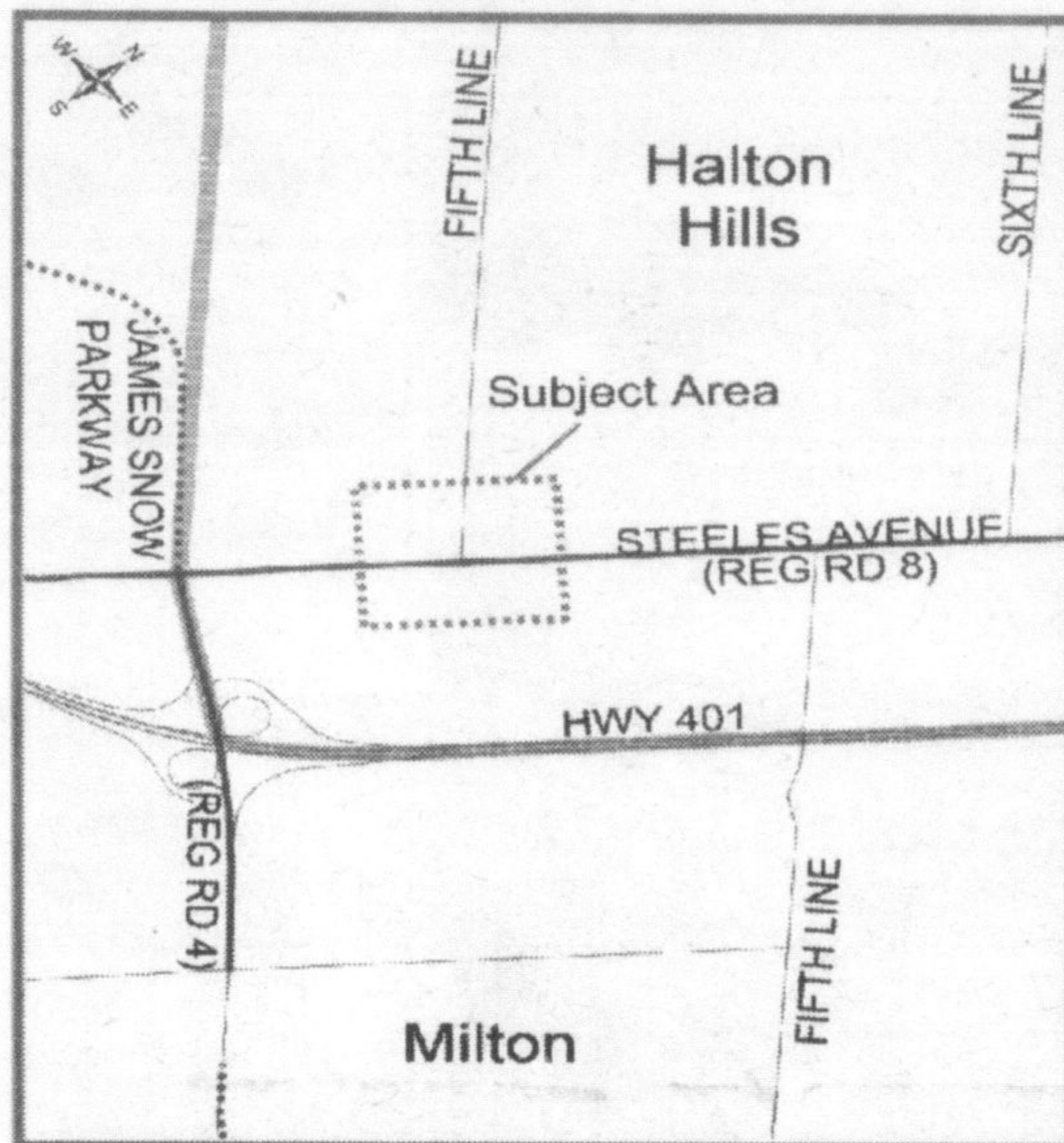
Construction drawings showing the proposed work may be reviewed at the Planning & Public Works Department, Halton Regional Centre, 1151 Bronte Road, Oakville.

For further information, or to arrange an appointment to review the drawings, please contact Ms. Lisa Zinkewich, B.E.S, Transportation Co-ordinator at extension 7556.

Toll Free: 1-866-4HALTON
(1-866-442-5866)

E-mail: zinkewichl@region.halton.on.ca

Peter M. Crockett, P. Eng.,
Commissioner, Planning & Public Works



www.region.halton.on.ca/ppw/planningroads
This notice issued June 24, 2005

Post Inn Village and Oakville North EMS station Official Opening



Chairman
Joyce Savolline

You are invited to celebrate the official opening of Halton Region's newest facilities - Post Inn Village Long-Term Care Home and the Oakville North Emergency Medical Services (EMS) Station. The event will be held at Post Inn Village, located at 203 Georgian Drive, on Thursday July 7th, 2005 from 2 - 4 p.m. Visitors may enjoy a tour of the facilities and refreshments.

Post Inn Village is a non-profit, state of the art long-term care facility that is home to 228 residents. Adjacent to Post Inn is the Oakville North EMS Station, which was built as part of Halton Region's commitment to pre-hospital patient care delivery in the area.

For more information, please contact Halton Region at 905-825-6000 or toll free at 1-866-4HALTON (1-866-442-5866).

Halton Regional Meeting Schedule:

- July 5th 9:30 a.m. - Health & Social Services Committee
- July 6th 9:30 a.m. - Planning & Public Works Committee
- July 6th 1:30 p.m. - Administration & Finance Committee
- July 13th 9:30 a.m. - Regional Council

1151 Bronte Road, Oakville, ON L6M 3L1
905-825-6000 Toll free: 1-866-4HALTON (1-866-442-5866) TTY: 905-827-9833
or visit us at: www.region.halton.on.ca

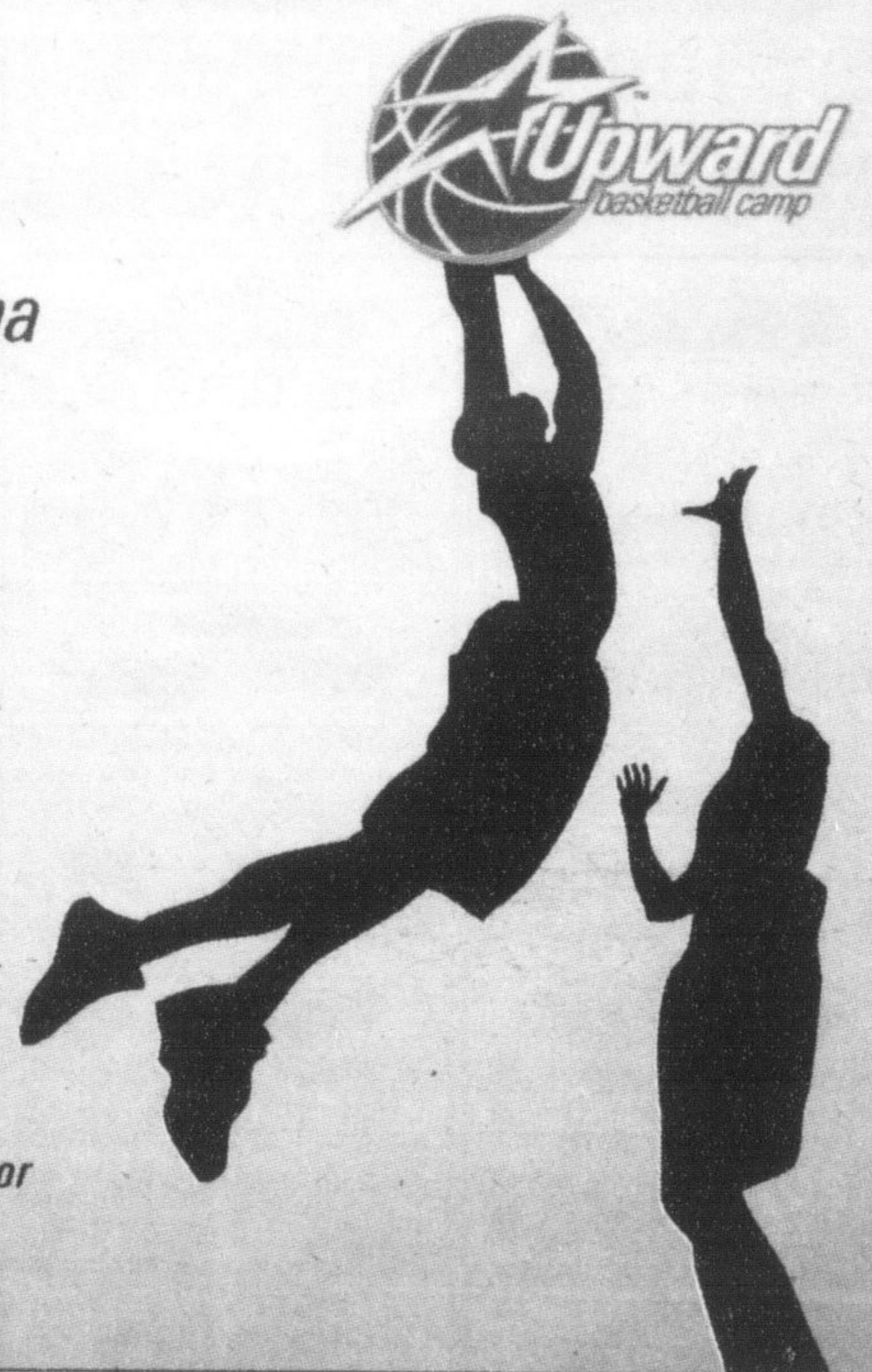
Milton Memorial Arena
on Thompson Road

Grades 1-6
July 25-29

9am-3pm
(bring a bag lunch)
Cost: \$65.00

(scholarships available based
on financial need)

For more info or to register
www.thesanctuary.ca/milton or
905-257-3987



A fun-filled, activity-based, half-day camp

Aug. 29-Sept. 2, 2005
9:00 am - 12:00 noon
Tansley Woods Community Center
Burlington
For children from age 3 to
those entering grade 6



A fun-filled, activity
based, half-day camp

August 2-5th, 2005
8:00 am-1:00 pm
Oakville Entertainment Centrum
(AMC Winston Churchill)
Grades 1-6

email: office@thesanctuary.ca
phone: 905-257-3987
www.thesanctuary.ca

The Sanctuary
A Church for Your Heart, Mind & Spirit
OAKVILLE - BURLINGTON - MILTON