



CANADA'S BEST DRIVES START HERE!



3.9%
PURCHASE FINANCING
NOW FOR 60 MONTHS

LEASE FOR \$199
PER MONTH FOR 48 MONTHS WITH \$3,321 DOWN. FREIGHT AND P.D.E. INCLUDED.

2005 Corolla CE
\$17,625 MSRP

Fuel consumption: Hwy 5.3L/100 km (53 mpg)
City 7.1L/100 km (40 mpg)

- 1.8 L, 130 hp engine • 5-speed manual transmission • A/C
- AM/FM stereo CD • Power locks and mirrors • Keyless entry & more

1.9%
PURCHASE FINANCING

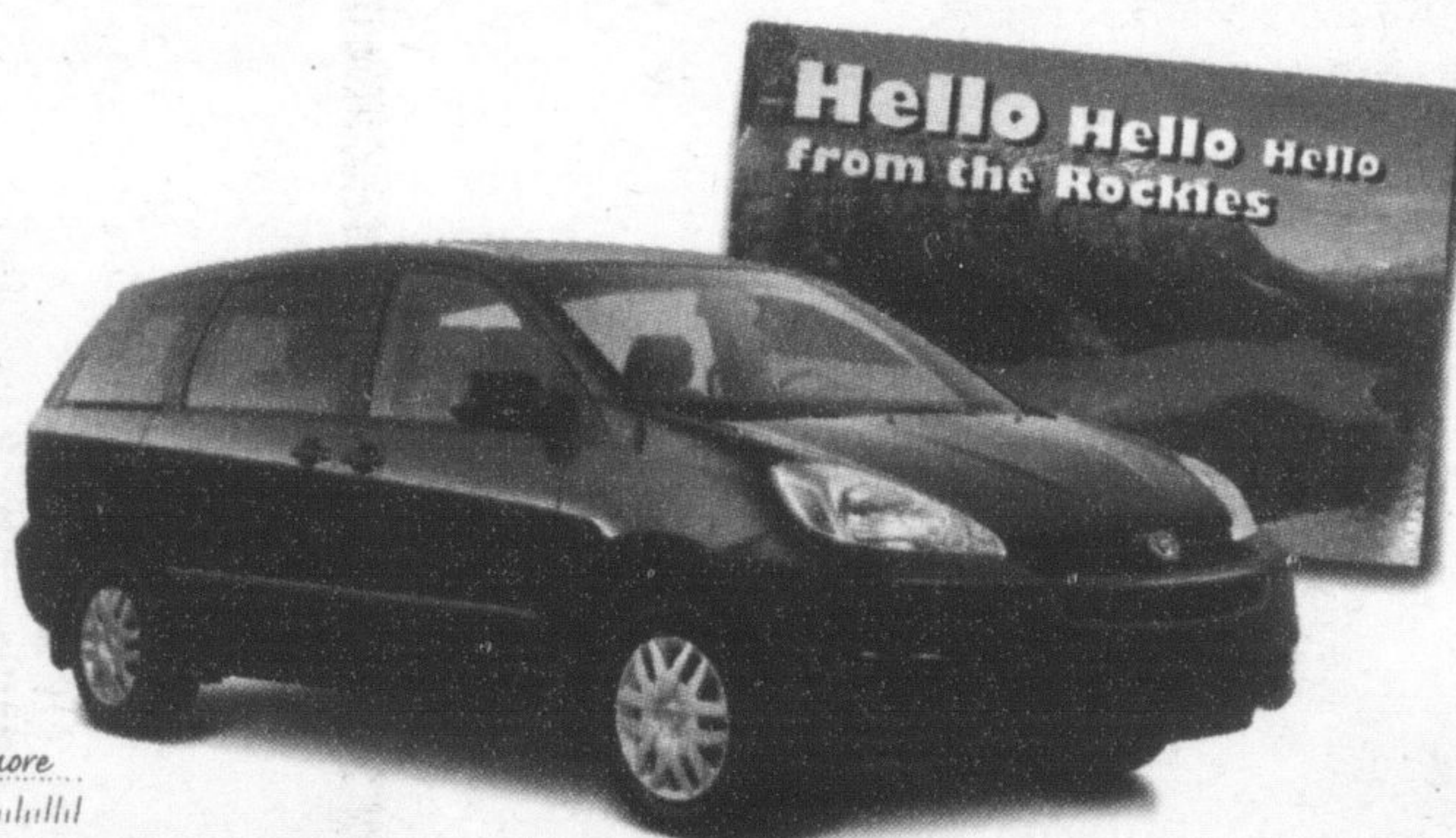
LEASE FOR \$299
PER MONTH FOR 48 MONTHS WITH \$6,989 DOWN. FREIGHT AND P.D.E. INCLUDED.

2005 Sienna CE

\$30,000 MSRP

Fuel consumption: Hwy 8.2L/100 km (34 mpg)
City 12.4L/100 km (23 mpg)

- 3.3 L, 230 hp engine • 5-speed automatic transmission • ABS • A/C
- Power windows, locks and mirrors • Dual sliding doors • Keyless entry & more



3.9%
PURCHASE FINANCING

LEASE FOR \$225
PER MONTH FOR 48 MONTHS WITH \$3,335 DOWN. FREIGHT AND P.D.E. INCLUDED.

2005 Matrix

\$19,755 MSRP

Fuel consumption: Hwy 5.9L/100 km (48 mpg)
City 7.9L/100 km (36 mpg)

- 1.8 L, 130 hp engine • 5-speed manual transmission • A/C • Keyless entry with hatch release • AM/FM stereo CD • 16" Aluminum alloy wheels & more

ENERGUIDE MOST FUEL-EFFICIENT VEHICLE IN ITS CLASS*



1.9%
PURCHASE FINANCING

LEASE FOR \$419
PER MONTH FOR 48 MONTHS WITH \$5,547 DOWN. FREIGHT AND P.D.E. INCLUDED.

2005 Highlander 4WD V6

\$36,900 MSRP

Fuel consumption: Hwy 9.0L/100 km (31 mpg)
City 12.7L/100 km (22 mpg)

- 3.3 L, 230 hp, V6 engine • 5-speed automatic transmission • ABS • A/C
- Power windows, locks and mirrors • AM/FM stereo CD cassette & more



1.9%
PURCHASE FINANCING

LEASE FOR \$279
PER MONTH FOR 48 MONTHS WITH \$4,109 DOWN. FREIGHT AND P.D.E. INCLUDED.

2005 Camry LE

\$24,990 MSRP

Fuel consumption: Hwy 6.4L/100 km (44 mpg)
City 10.0L/100 km (28 mpg)

- 2.4 L, 160 hp engine • 5-speed automatic transmission • A/C
- Power windows, locks and mirrors • Keyless entry with trunk release
- AM/FM stereo CD & more



1.9% PURCHASE FINANCING* ALSO AVAILABLE ON RAV4, TUNDRA, 4RUNNER, AND SEQUOIA.



MILTON TOYOTA

400 Steeles Avenue 905 875-1700
www.miltontoyota.com

* Leasing plans from Toyota Financial Services. O.A.C. Offers valid on 2005 Corolla (Model BR32EM), Sienna (Model ZA30CPA), Matrix (Model HP21APA), and Camry (Model BE32KAA). Freight and P.D.E. not included in MSRP. Based on 48-month lease rate of 3.5% APR on Corolla and Matrix, 3.9% APR on Camry, 4.4% APR on Sienna, and 4.9% APR on Highlander. License, registration fees, insurance and taxes extra. Lease includes freight and P.D.E. cost of \$1,060/\$1,310/\$1,060/\$1,310. Down payment or trade equivalent of \$3,321/\$6,999/\$3,335/\$4,109 plus first payment due at lease inception. Security deposit of \$250/\$350/\$275/\$500/\$325. Total lease obligation of \$12,872/\$8,821/\$51,601/\$14,824/\$26,059.11/\$17,497.03 and purchase option price of \$7,402/\$9,200/\$8,494/\$9,167/\$12,745.50 based on a maximum of 96,000 KMS. Additional KM charge of \$0.71/107/15/10 if applicable. MSRP of \$17,625/\$30,000/\$19,755/\$36,900/\$24,990. † Financing plans from Toyota Financial Services. O.A.C. Purchase Financing offers valid on 2005 Corolla (Model BR32EM), Sienna (Model ZA30CPA), Matrix (Model HP21APA), and Camry (Model BE32KAA). Financing includes freight and P.D.E. cost of \$1,060/\$1,310/\$1,060/\$1,310. License, insurance, taxes and registration are extra and down payment may be required. Finance example: \$20,000 at 1.9%/3.9%/3.9% per annum equals \$571.98/\$450.69/\$367.43 per month for 36/48/60 months. C.O.B. is \$591.28/\$1,633.12/\$2,045.80 for a total obligation of \$20,591.28/\$21,633.12/\$22,045.80 and down payment may be required. 1.9%/3.9%/3.9% no limit purchase financing for up to 36/48/60 months available on the 2005 Camry, RAV4, Highlander, Sienna, Tundra, 4Runner, Sequoia / Matrix / and Corolla. †† Based on 2005 Fuel Consumption Guide ratings published by Natural Resources Canada. All rights are reserved. These are limited time offers. Please see your participating Toyota Dealer for complete details. Dealer may sell/lease for less.

Parents go to Region with safety concerns

By MELANIE HENNESSEY

The Champion

Local parents calling for beefed up school bus safety measures on Trafalgar Road celebrated a small but significant victory last week after the Region agreed to erect the bus-related signs they requested.

The Sam Sherratt Home and School Association sent out a letter recently asking for large signs to be installed along Trafalgar Road between Britannia Road and Lower Base Line — a four-lane road.

The association requested the signs outline the requirement for traffic to stop in both directions for buses and the fines associated with not stopping.

The letter also called for an increased police presence at bus pick-up and drop-off times.

Members of the association have reported seeing vehicles not stop for buses on numerous occasions.

Halton's Manager of Transportation Services Edward Soldo told The Champion Wednesday that staff have no problem with erecting the signs within a couple of weeks, but he wasn't sure how many or what the exact wording would be.

"We'll put up some additional safety measures — anything we can do to raise the awareness," he said.

This came as good news to Ruth Rae-Hunt, president of the association. She said the dangerous traffic situation first came to her attention when she was driving home from work one day northbound on Trafalgar Road.

When she saw a bus heading south toward her stop to let some Sam Sherratt students off, she couldn't believe what the other vehicles on the road did.

"I was the only one who stopped going northbound," she said, noting she even saw a car coming up beside the bus just keep driving through. "It's a hazardous situation for students, parents and other drivers."

Speaking with other parents, Ms Rae-Hunt soon learned this isn't an uncommon occurrence.

Jackie Lacenaire is one of those parents who's seen first-hand how dangerous the situation is becoming for everyone involved.

Since she lives on Trafalgar between Britannia Road and Lower Base Line, she's seen a couple of car crashes due to people not stopping for the bus.

She said the accidents happened because one driver stopped for the bus, but the person behind them didn't.

"Pieces of metal flew everywhere," she said, noting her 10-year-old daughter wasn't even halfway on the bus when these crashes happened. "It's very dangerous — they don't stop."

Ms Rae-Hunt said she thinks most people simply aren't aware that on a four-lane road that doesn't have a centre median, drivers traveling both ways are required to stop for the bus.

Halton Regional Police Superintendent Joe Taylor told The Champion he thinks people also aren't aware of the fine associated with not stopping for a bus — \$500, plus six demerit points off your driver's licence.

He said the association's complaint is of concern to the police, noting the group's letter has been forwarded along to the regional traffic bureau and also to the

• see TRAFALGAR on page A15