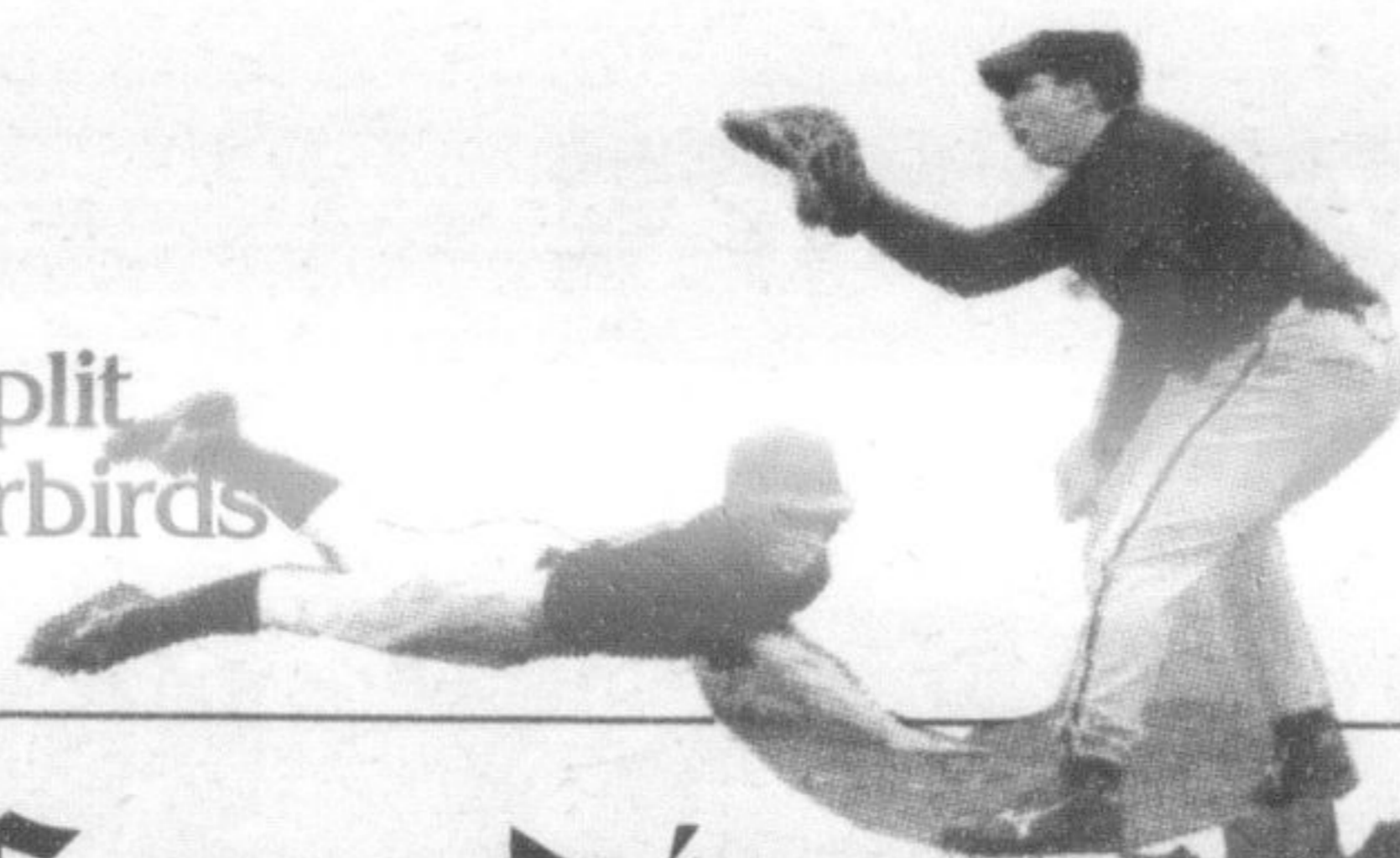


Best Homes

Real Estate
See what's on the market inside

SPORTS

HAC earns split with Thunderbirds
Page A24



COMMUNITY

Community Living celebrates golden anniversary
Page A8



MILTON PUBLIC LIBRARY

MILTON PAINT & DECOR
Corner of ONTARIO & STEELES
WE CARRY
PARA PAINTS, milkbarn, Sherwin Williams
482 Steeles Ave. E.
905-878-0774
• Mon - Wed 7:30am - 6:00pm
• Thurs - Fri 7:30am - 7:00pm
• Sat - 9:00am - 5:00pm
Proudly Canadian

The Canadian Champion

LIBERTY CASH
CASH ADVANCES
ASSISTING YOU WITH YOUR SHORT-TERM FINANCIAL NEEDS
905.693.0413
327 Bronte St. S., Milton

A METROLAND COMMUNITY NEWSPAPER VOL. 146 NO. 29 TUESDAY, JUNE 21, 2005 \$1.00 (GST included) 52 PAGES "Using Communication to Build Better Communities"



Lighting up the fair grounds

Relay for Life participants walk the illuminated path in memory of lost loved ones during the Canadian Cancer Society fundraiser at the Milton Fair Grounds Friday evening. The event continued until early Saturday morning. See more photos from the event on page 7.

Photo by SABRINA BYRNES

School trustee demands answers

By JASON MISNER
Special to The Champion

Halton Hills Trustee Ethel Gardiner has demanded a report detailing exactly how much money was spent on a lawyer, court reporter and two plainclothes police officers involved in a couple of controversial public school board meetings last month.

At a recent Halton District School Board meeting, Ms Gardiner asked that a report be tabled at tomorrow's board meeting outlining the cost of the legal and protective services.

She told The Post — The Champion's sister newspaper — in an interview that she asked for a breakdown of the costs because she has been approached by at least three constituents who are concerned by the price and how it will be paid.

"I think it's important that information be shared

"I think it's important that information be shared with the public. We were given a figure of \$10,000 and I would like to see that it's accurate."
.....
ETHEL GARDINER

with the public," she said.
"We were given a figure of \$10,000 and I would like to see that it's accurate. I think the only way to get those answers is to bring that report forward once those invoices come in."

Peter Lauwers of the firm Miller Thomson was hired by board Chair Paul Tate and Vice-Chair and Burlington Trustee Peggy Russell to provide his legal opinion about the validity of policy governance at a special board meeting May 16.

Policy governance — which underwent major changes during a raucous board meeting May 18 — was introduced to the board about four years ago. Within the model, trustees set broad strategic targets for staff under the management of the education director. It has been a contentious issue among some trustees who felt it limited their decision-making abilities.

Mr. Tate had said he became aware that the board might be operating illegally under policy governance and he felt an opinion was needed as quickly as possible.

• see NOT on page A15

Inside

CommentA6
BusinessA13-A14
Champion Country . .A17-A21
ClassifiedA26-A30
DatelineA32-A33

MILTON TOYOTA
www.miltontoyota.com

GORRUD'S AUTO GROUP
www.gorrudsautogroup.com

National Car Rental

Wallace
PONTIAC • BUICK • CADILLAC

2005 PONTIAC G6
3.5L 200-hp V6 engine, 4-spd auto with o/d, remote keyless entry, A/C, cruise control, 4 wheel disc brakes, 16" twin 5-spoke alum. wheels, 6 speaker CD stereo, power locks, windows, mirrors, tilt/telescopic adjustable steering wheel, fog lights

LEASE FROM ONLY **\$268** /mth

CASH PURCHASE PRICE **\$24,988**

Plus all applicable taxes & admin fee, 48 mth lease. O.A.C. No security deposit.

Wallace 801 Main St. E., Milton Mon - Thurs. 9-9pm, Fri & Sat 9-6pm Service Open Sat. 8:30-2 pm 905-878-2355