

✓ Special thank-you

Maria Sewell (left) of Deborah's Home and Mayor Gord Krantz present a stained glass piece to Christine and Cory Opsteen in recognition of their long-time financial support of Independent Living Halton. Each year the Opsteens hold a garage sale and donate the proceeds - with the 15th annual fundraiser coming up this summer.

Photo by GRAHAM PAINE



WE'VE LOWERED THE COST OF LIVING IT UP!

2005 Sentra

Instock Only!



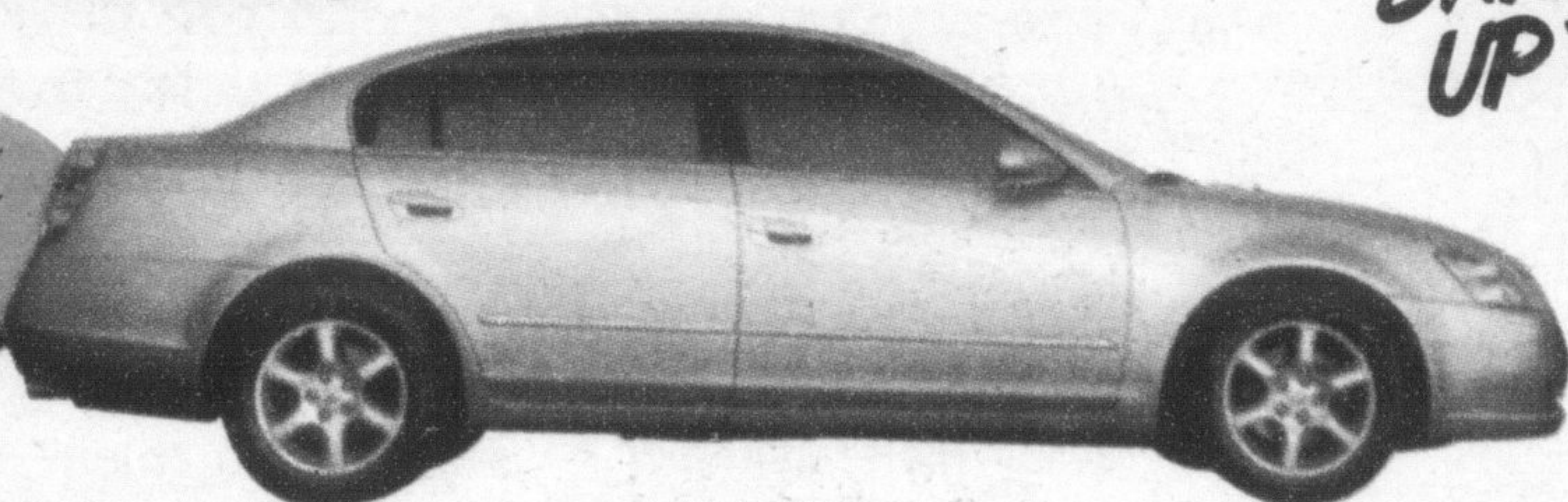
SAVINGS UP TO...

\$1500 OFF

"Vehicles qualify for all special finance rates."

2005 Altima

Instock Only!



SAVINGS UP TO...

\$2000 OFF

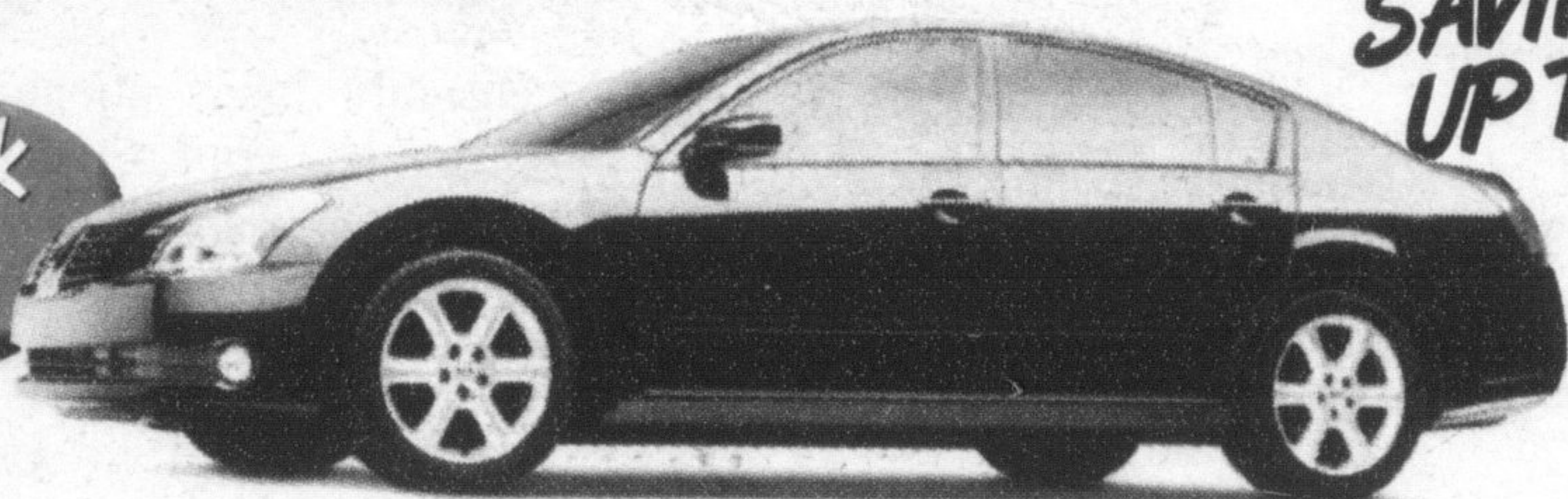
PLUS + **\$1000 GAS CARD**

TOTAL **\$3000 OFF**

"Vehicles qualify for all special finance rates."

2005 Maxima

Instock Only!



SAVINGS UP TO...

\$3000 OFF

"Vehicles qualify for all special finance rates."

2005 Xtrail

Instock Only!



SAVINGS UP TO...

\$2000 OFF

"Vehicles qualify for all special finance rates."

NISSAN

Head Office

Demos

2005 Pathfinder LE

Storm grey, 8500 kms

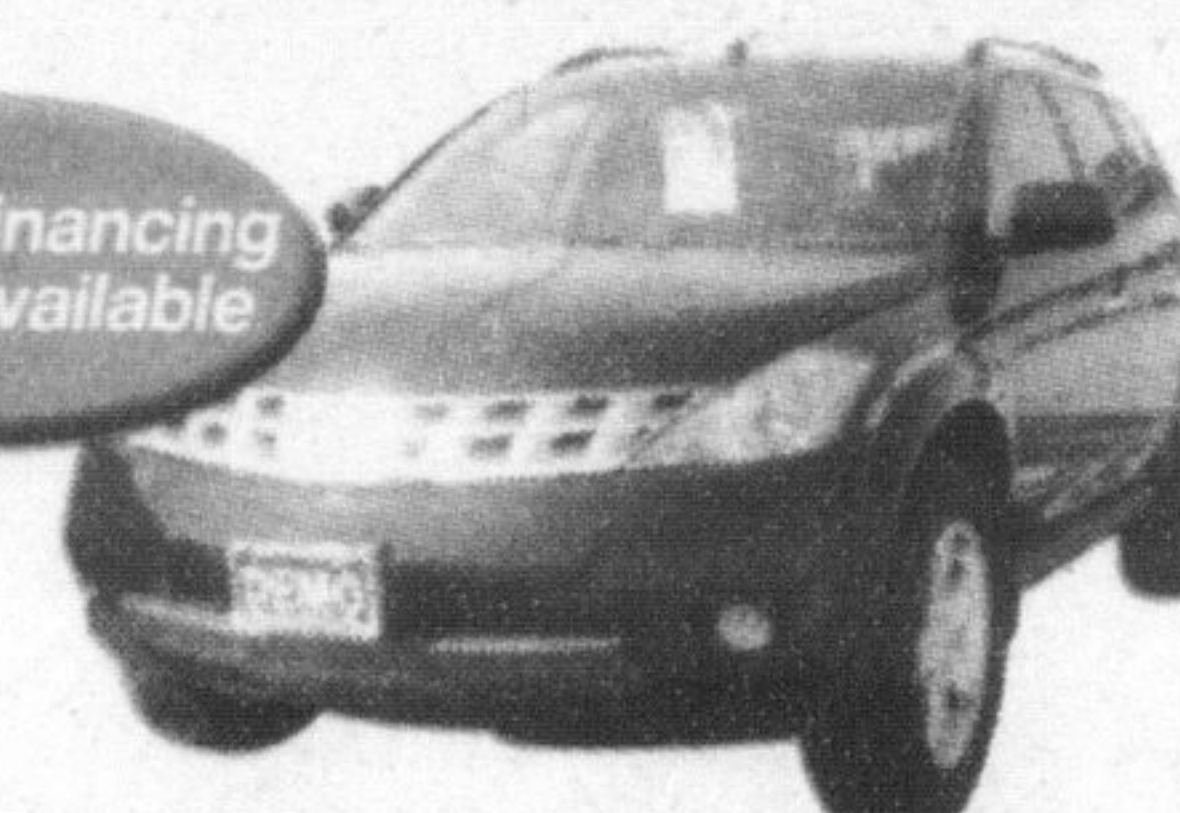
1.8% Financing Available



\$43,995

2005 Murano SL

1.8% Financing Available



\$36,995

2005 Pathfinder SE

"Premium Package" Silver, 11500 kms

1.8% Financing Available



\$39,995

2005 Murano SL AWD

with sunroof blue, 11500 kms

1.8% Financing Available



\$37,995

** All head office demo's are based on \$2000 down, 24,000 km per year Pathfinder & Murano 4.9% ALR. All leases are through Nissan Canada Finance excess km @10c per km & are OAC.

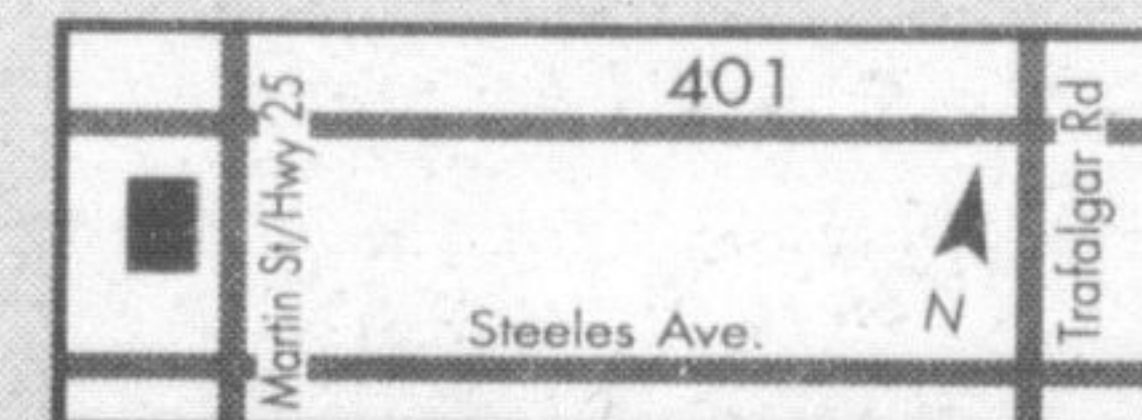
NISSAN GRAD PROGRAM

Milton's
**NORTH END
NISSAN**

LTD.

610 MARTIN STREET, MILTON
905-878-4137

SALES DEPT. HOURS:
Mon.-Thurs. 9:00 - 9:00
Fri. 9:00 - 6:00
Sat. 9:00 - 5:00



www.nissan.ca



SHIFT