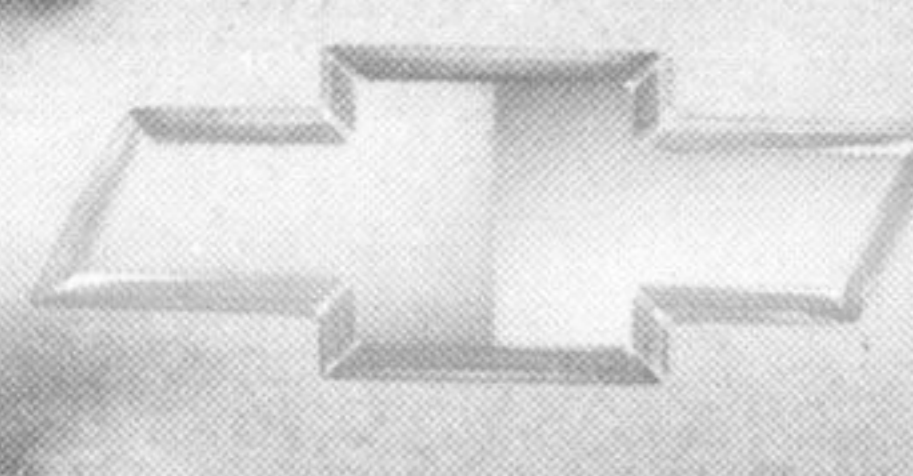


For the latest information, visit us at gmc.ca or call us at 1-800-GM-DRIVE. *With purchase or lease of virtually all 2005 new or demonstrator in-stock models delivered between May 25 and August 2, 2005, inclusively and with payment of an additional \$0.01, customers receive a Petro-Canada Preferred Price card. The \$0.20 discount includes applicable taxes. Cards valid as of 72 hours after delivery and until August 31, 2007 or until 2500L are used up, whichever comes first. Cards are valid only at Petro-Canada locations and other approved locations, and are not redeemable for cash. All 2005 vehicles are eligible except the following models: Cavalier/Sunfire, Blazer/Jimmy, Medium Duty Trucks (including GMT560 Family 283 & 350 and W-Series), HUMMER, Cadillac, SAAB. See dealer for conditions and details. **Based on a 24 month lease for Equinox LS R7C. Annual cost of borrowing is 0.5% to 0.5% per annum. Option to purchase at lease end is \$17,427/\$19,044, plus applicable taxes. †Based on a 48 month lease for Equinox LS R7C. Annual cost of borrowing is 3.9%. Option to purchase at lease end is \$13,070, plus applicable taxes. **Annual kilometre limit is 20,000 km, \$0.12 per excess kilometre. Other lease options are available. Dealers are free to set individual prices. Freight (\$995), license, insurance, registration, PPSA, administration fees and taxes not included. Offers apply as indicated to the lease of 2005 new or demonstrator models, and applies only to qualified retail customers in the Ontario Chevrolet Dealer Marketing Association area only (including Outaouais and excluding Northwestern Ontario). Dealer trade may be required. Limited quantities of 2005 models are available. Limited time offers which may not be combined with other offers. See your dealer for conditions and details. †Based on available competitive brochure information for the Ford Escape XLS, Honda CR-V LX, and Toyota RAV4 base. †I.D. Power and Associates 2004 U.S. Automotive Performance, Execution and Layout (APEAL) StudySM. Study based on 102,951 U.S. consumer responses. www.jdpower.com ©U.S. Government star ratings are part of the National Highway Traffic Safety Administration's (NHTSA's) New Car Assessment Program (NCAP). For more information on safety ratings, go to www.safercar.gov. †Registered trademark of General Motors Corporation. TD Canada Trust licensed user of mark. Visa International Service Association/TD Canada Trust and GM licensed user of mark. Visa Trade-mark of The Toronto-Dominion Bank.



FILL IT UP EVENT

20¢ OFF

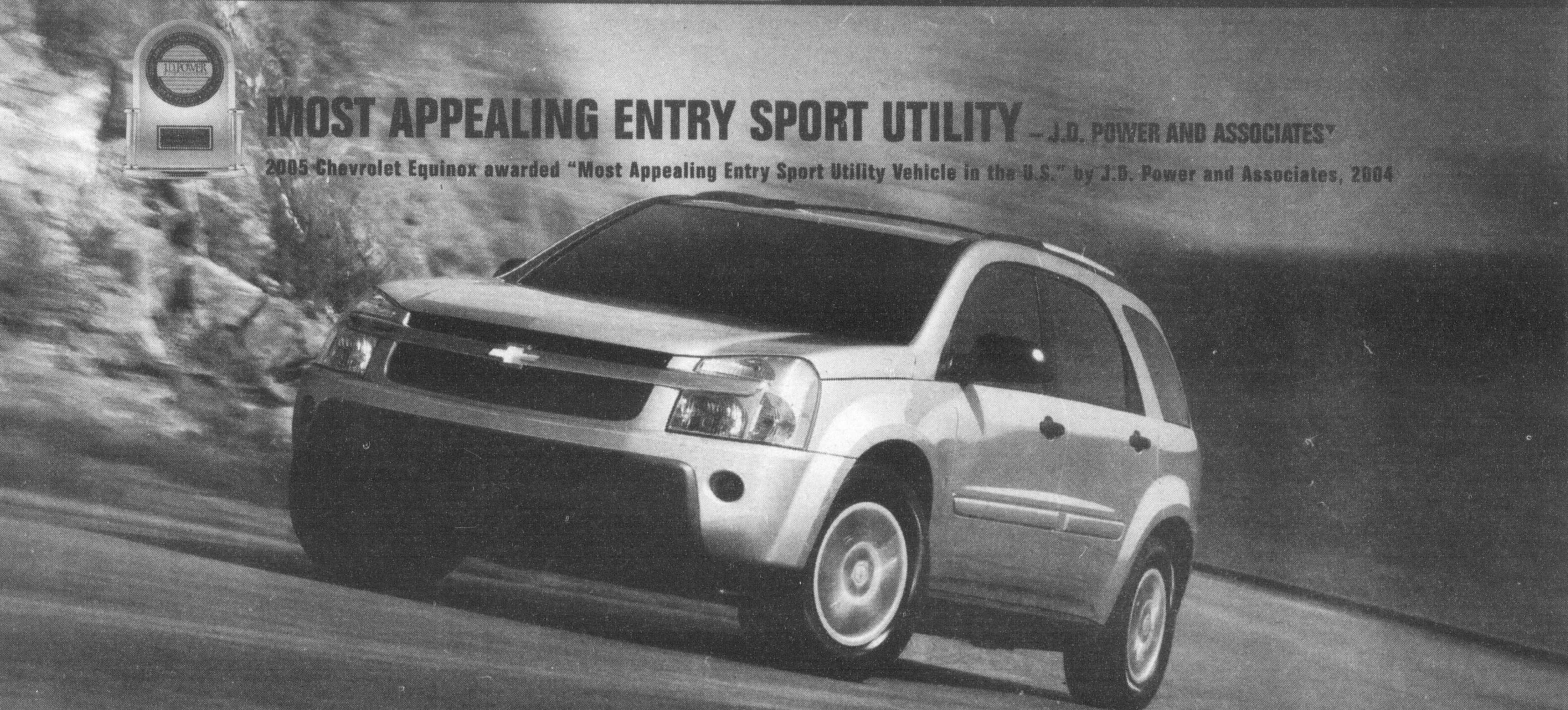
PER LITRE FOR A YEAR

UP TO 2,500 LITRES*

EXCLUSIVE TO GM

There's no better time to celebrate our exciting new line-up of Chevrolet models. Save at the pump plus get 0% purchase financing on virtually all models. These great offers won't last, so don't delay!

THUMBS UP FROM OUR MOST IMPORTANT CRITICS: OUR CUSTOMERS



MOST APPEALING ENTRY SPORT UTILITY – J.D. POWER AND ASSOCIATES*

2005 Chevrolet Equinox awarded "Most Appealing Entry Sport Utility Vehicle in the U.S." by J.D. Power and Associates, 2004

CHEVROLET EQUINOX

"No one matches the Equinox's overall comfort, convenience and versatility." *Jeremy Cato, Globe & Mail*

\$239**

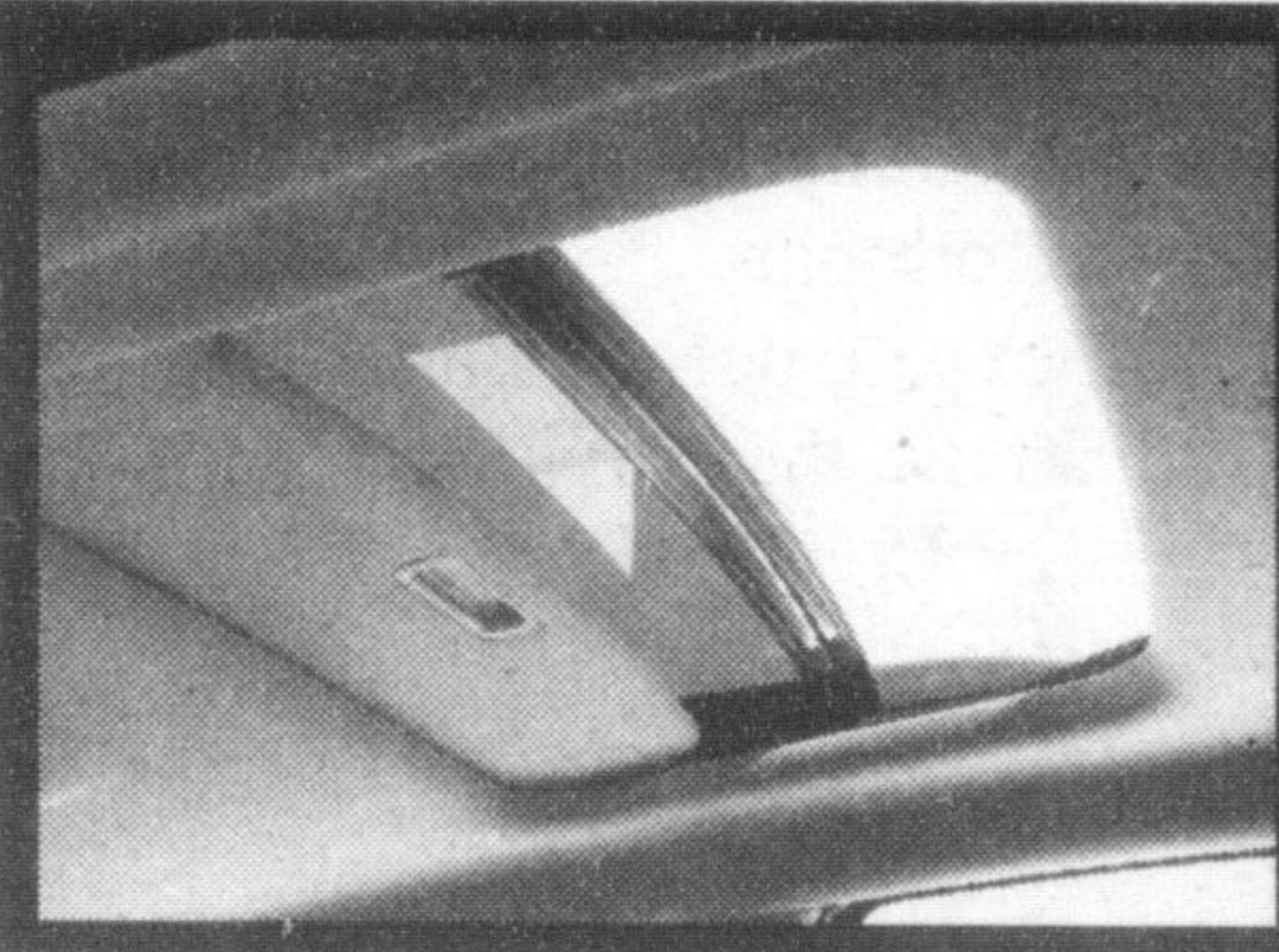
PER MONTH WITH \$4,425 DOWN

24 MONTH SMARTLEASE

Lease the Equinox R7C for 48 months*

Down Payment	Lease Payment
\$0	\$364
\$1,500	\$330
\$3,000	\$297
\$4,425	\$265

- Equinox LS (R7C)**
- 3.4L 185 HP SFI V6 Engine
 - 5-Speed Automatic
 - Air Conditioning
 - CD Stereo
 - Power Locks/Windows/Mirrors
 - 16" Aluminum Wheels
 - Cruise Control
 - Multi-Flex™ Rear Seating – 60/40 Split Folding, Reclining and Sliding Bench (with 8" of Travel)
 - Fold-Flat Front Passenger Seat
 - Multi-Level Cargo Area with Removable Panels



OR LEASE THE EQUINOX LT (R7A) FOR 24 MONTHS AND GET A SUNROOF, AM/FM STEREO WITH 6 DISC CD PLAYER AND PREMIUM 7 SPEAKER SOUND SYSTEM AND MORE FOR

\$15 MORE PER MONTH**

★★★★★

HIGHEST GOVERNMENT SAFETY RATING

The Chevrolet Equinox received a 5-Star rating for the driver and front passenger in the frontal crash test and for front and rear seat occupants in the side-impact crash test.[†]

HOW EQUINOX STACKS UP

FEATURES	CHEVROLET EQUINOX LS	FORD ESCAPE XLS	HONDA CR-V LX	TOYOTA RAV-4 BASE
SAFETY	NHTSA Safety Rating Frontal, Driver and Passenger [†]	★★★★	★★★★	★★★★ (with SAB)
	NHTSA Safety Rating Side, Driver and Passenger [†]	★★★★	★★★★	★★★★ (with SAB)
	Fog Lamps	Yes	No	No
PERFORMANCE	Engine HP	3.4L 185 HP V6	2.3L 153 HP I4	2.4L 160 HP I4
	Transmission	5-Speed Automatic	5-Speed Manual	5-Speed Manual
	Wheels	16"	15"	16"
COMFORT AND CONVENIENCE	Remote Keyless Entry	Yes	Yes	Yes
	Air Conditioning	Yes	No	Yes
	Rear Legroom	40.2"	36.3"	39.4"
SPACE AND CAPABILITY	Cargo Volume	35.2 cu. ft.	29.3 cu. ft.	33.5 cu. ft.
	Roof Rails	Yes	Yes	No
	Trailering (when properly equipped)	1588 kg (3500 lbs)	680 kg (1500 lbs)	680 kg (1500 lbs)

†Based on available competitive print brochures.

CHECK OUT EQUINOX TODAY AT YOUR ONTARIO CHEVROLET DEALER.

