

Dateline

• from DATELINE on page 21

carpooling arranged. Its **Downsizers Weight Loss Club** takes place at 10 a.m. The cost is \$2 for members and \$4 for non-members. For more information, call (905) 875-1681.

Allendale long-term care centre, 185 Ontario St. S., holds an **information meeting** at 6:30 p.m. in the bar/café for students interested in volunteering in its Summer Student Volunteer Program. For more information, call (905) 825-6000, ext. 8025.

Big Brothers Big Sisters of Halton holds an **information session** from 7 to 8 p.m. at 464 Morden Rd. in Oakville for those interested in

volunteering. There are 73 kids awaiting mentors. For more information, call (905) 339-2355.

Wednesday June 15

Milton Meals on Wheels holds a **luncheon** at 11:30 a.m. at 80 Ontario St. N. The cost is \$5. Transportation and assistance can be arranged. For more information or to reserve a seat, call (905) 878-6699.

The Women's Centre, suite 210 in Hopedale Mall at Rebecca Street and Third Line, in Oakville holds its free **Abuse Support Group** from 6 to 8 p.m. To register or for more information, call (905) 847-5520.

The Milton Seniors' Activity Centre, 500 Childs Dr., holds **contract bridge** at 9:30 a.m. The cost is \$2 for members and \$4 for non-members. It serves a **hot lunch** from 11:30 a.m. to 12:45 p.m. The cost is \$6. Reserve by Monday. And its **Evening Clogging** is held at 6:45 p.m. for beginners and 7:45 p.m. for intermediate cloggers. For more information, call (905) 875-1681.

Thursday June 16

The Milton Historical Society holds a **pot luck dinner** at 7:30 p.m. at the Waldie Blacksmith Shop, 16 James St.

VON Alzheimer Services offers its monthly **support group** for caregivers of people with Alzheimer's disease and related disorders in the community room upstairs at Loblaws from 2 to 3:30 p.m. For information, call (905) 847-9559.

The Fine Arts Society of Milton's **Evening Group of Artists** meets from 7 to 10 p.m. The informal environment provides artists with an opportunity to exercise their drawing skills. For more information, call Janis at (905) 854-5753.

Milton District Hospital holds a **breastfeeding clinic** with a certified lactation consultant from 7 to 9 p.m. To make an appointment, call Jean Gallen at (905) 878-2383, ext. 7030.

The Regional Municipality of Halton

A Partnership That Works!



NOTICE OF PUBLIC INFORMATION CENTRE #1

Regional Road 25 Transportation Corridor Highway 401 to north of Campbellville Road Town of Milton

Class Environmental Assessment Study

The Regional Municipality of Halton is carrying out a Class Environmental Assessment to consider a wide range of options for transportation corridor improvements to satisfy future travel demands on Regional Road 25, from Highway 401 to just north of Campbellville Road, in the Town of Milton (see map below). The need to satisfy north-south capacity requirements in this transportation corridor has been identified in previous studies including the Region of Halton Transportation Master Plan (2004). This study is being conducted in compliance with Schedule C of the Municipal Class Environmental Assessment (June 2000), which is approved under the Ontario Environmental Assessment Act.

A key component of the study will be consultation with interested stakeholders (public and regulatory agencies) at two Public Information Centres (PICs). The first PIC has been arranged for:

- Date:** Wednesday, June 15, 2005
- Time:** 6:30 p.m. - 7:00 p.m. Drop-in centre
7:00 p.m. - 8:00 p.m. Presentation followed by question and answer session
- Place:** Milton Sports Centre, Banquet Room
605 Santa Maria Boulevard, Milton

The purpose of the PIC is to review and obtain public input after reviewing the problem being addressed, background information, and the alternatives being considered. Anyone with an interest in the study is invited to attend and participate. If you cannot attend and would like to provide comments, please forward them by **Wednesday, June 29, 2005** to the Regional Municipality of Halton at the address below. Following the PIC, the study findings will be reviewed in light of comments received and the preferred alternative will be determined. A second PIC will be scheduled for September 2005.

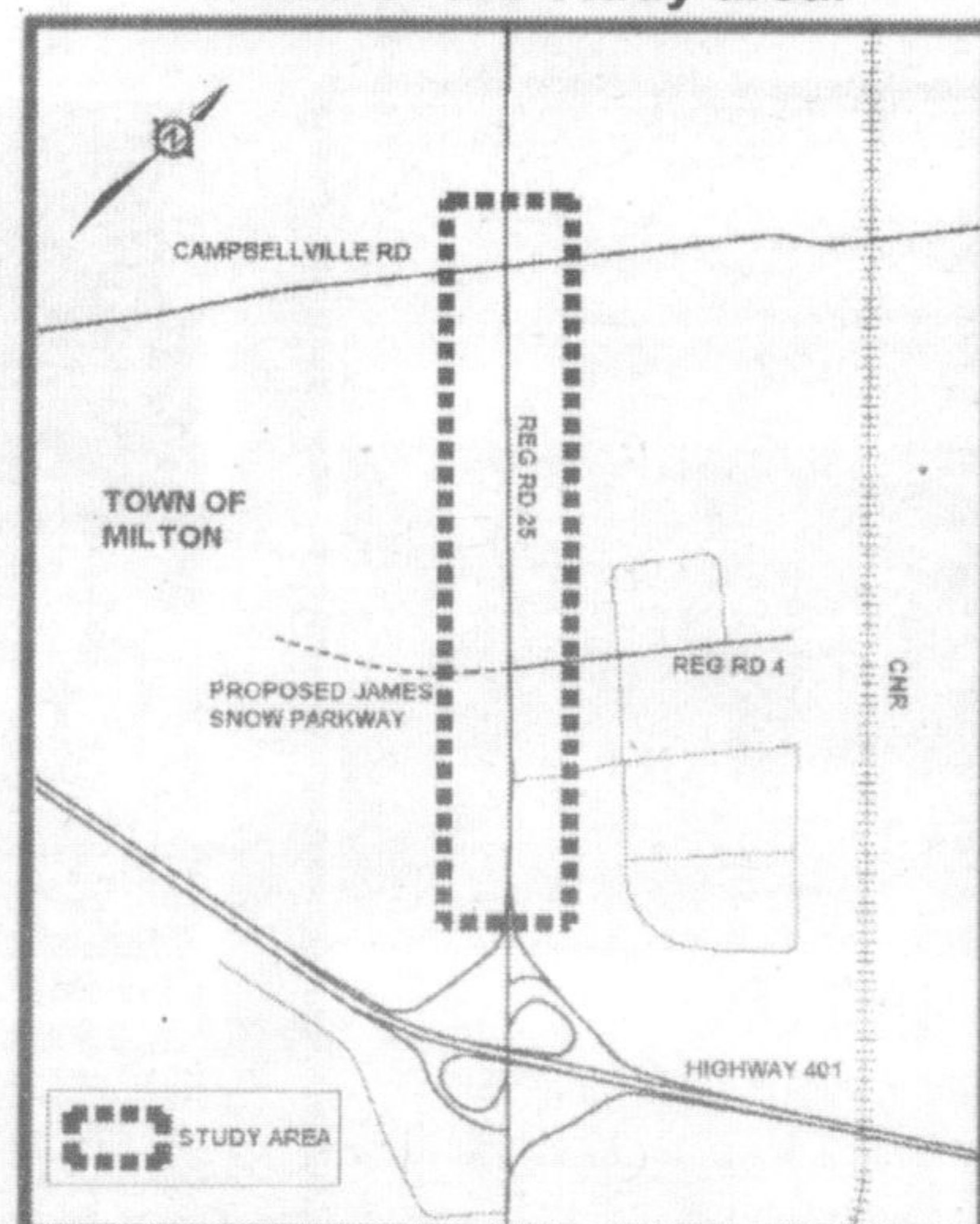
Information requests or questions may be directed to:

Lisa Zinkewich, B.E.S
Project Manager
Regional Municipality of Halton
1151 Bronte Road
Oakville, Ontario L6M 3L1
Phone: 905-825-6000, ext. 7556
Fax: 905-825-8822
Email: zinkewichl@region.halton.on.ca

Scott Thorburn, P.Eng
Consultant Project Manager
URS Canada Inc.
75 Commerce Valley Drive East,
Markham, Ontario, L3T 7N9
Phone: 905-882-4401 ext. 534
Fax: 905-882-4399
Email: scott_thorburn@urscorp.com

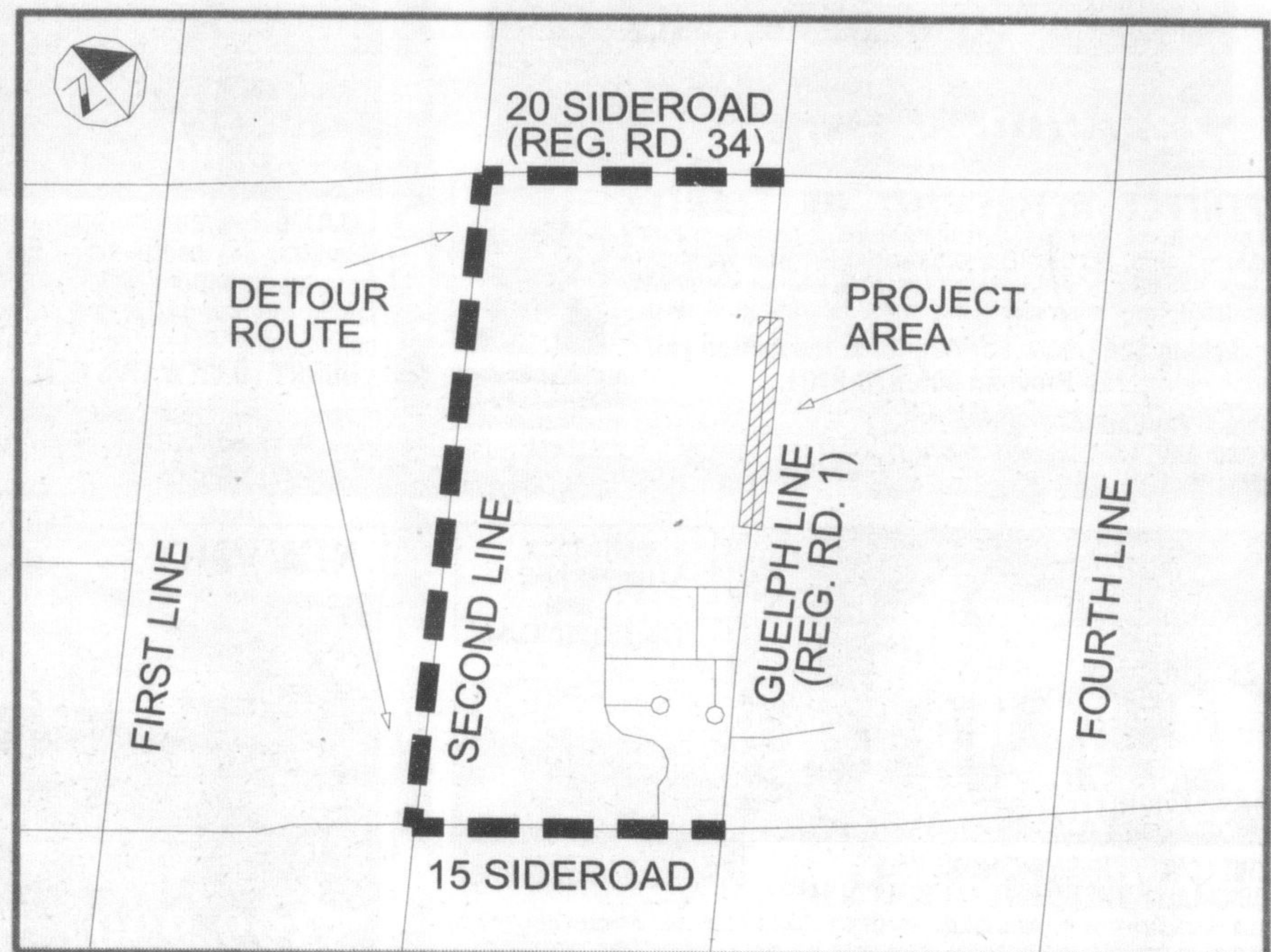
This Notice first issued on June 3, 2005
www.region.halton.on.ca/ppw/planningroads

The map below shows the approximate limits of the study area.



NOTICE OF CONSTRUCTION AND ROAD CLOSURE

ROAD RECONSTRUCTION ON GUELPH LINE (REGIONAL ROAD 1) BETWEEN 15 SIDEROAD AND 20 SIDEROAD TOWN OF MILTON



CONTRACT NUMBER:	R-2078B-05
SCHEDULED START DATE:	JUNE 6, 2005
SCHEDULED COMPLETION DATE:	AUGUST 31, 2005
CONSTRUCTION SUPERVISOR:	LEONARD VERWEY, EXT. 7616

Congratulations ESAC on 20th Anniversary



Chairman
Joyce Savoline

Halton Region would like to congratulate the Elderly Services Advisory Committee (ESAC) on their 20th anniversary. ESAC continues to be a valuable resource for Regional Council by providing information on seniors' issues that assists Council in making informed decisions on behalf of seniors of Halton. ESAC aims to enhance the quality of life for seniors by improving access to services and helping seniors stay healthy and independent. If you would like more information on how to become a member of ESAC or about their 20th anniversary, please contact Sue Haggith at 905-825-6000, ext. 7767.

Halton Regional Meeting Schedule:

- June 14th 9:30 a.m. - Health & Social Services Committee
- June 15th 9:30 a.m. - Planning & Public Works Committee
- June 15th 1:30 p.m. - Administration & Finance Committee