

Champion Country

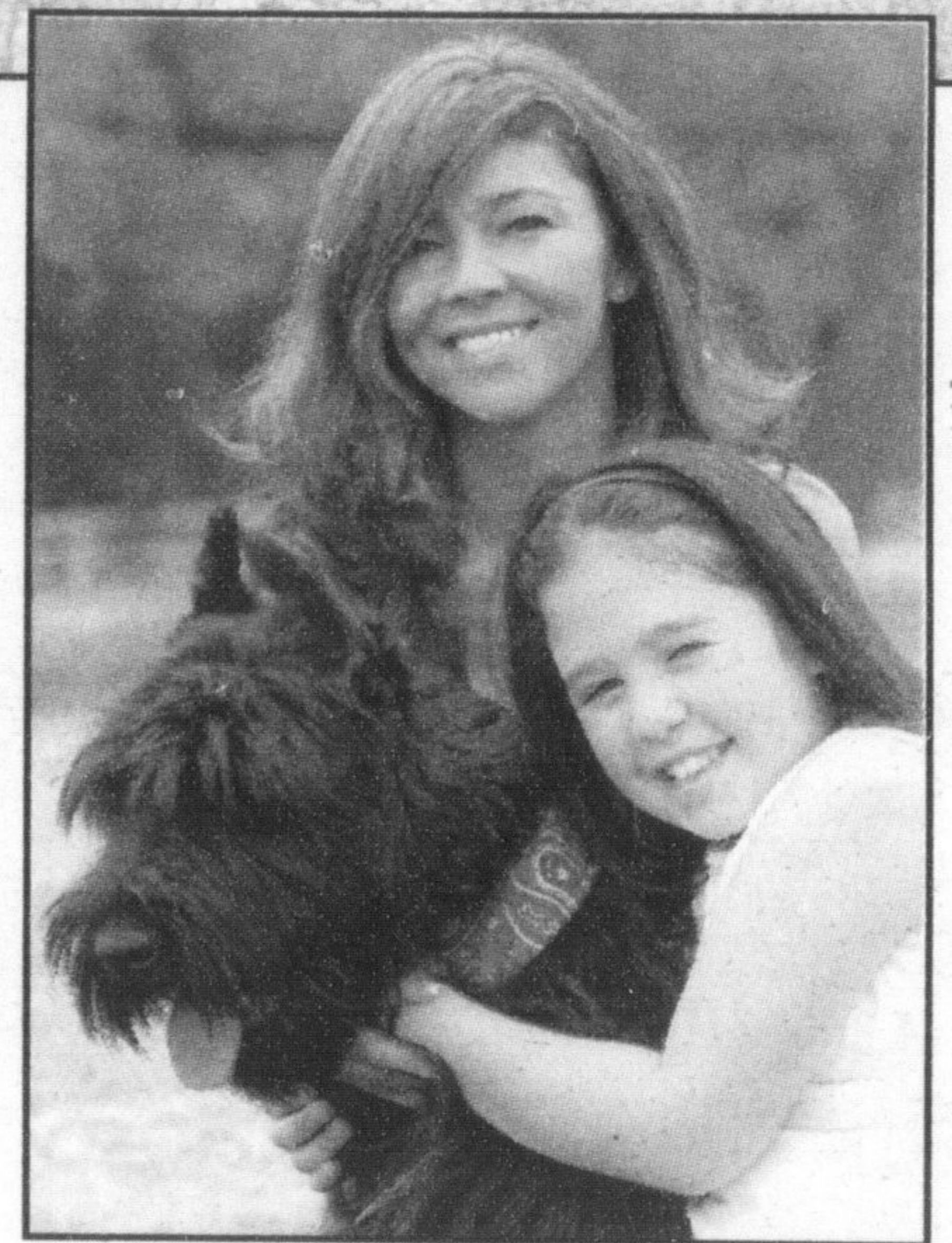
Covering Rural Halton & Wellington County



✓ Dog day afternoon

Above, 11-year-old Rachael Aragona takes her dog Schultz for a run — or is it the other way around? — during the inaugural Giant Schnauzer Picnic at Hornby Park Saturday afternoon. At left, mother Ann Aragona teaches Schultz to sit and shake a paw. At right, mother and daughter give their furry friend some attention. More than 50 owners and their dogs attended the event, which served as a fundraiser for the Giant Schnauzer Rescue and included games, demonstrations and nutritional information.

Photos by GRAHAM PAINE



A Public Course with a Country Club Style Atmosphere

CROSSWINDS
GOLF & COUNTRY CLUB

NOW OPEN

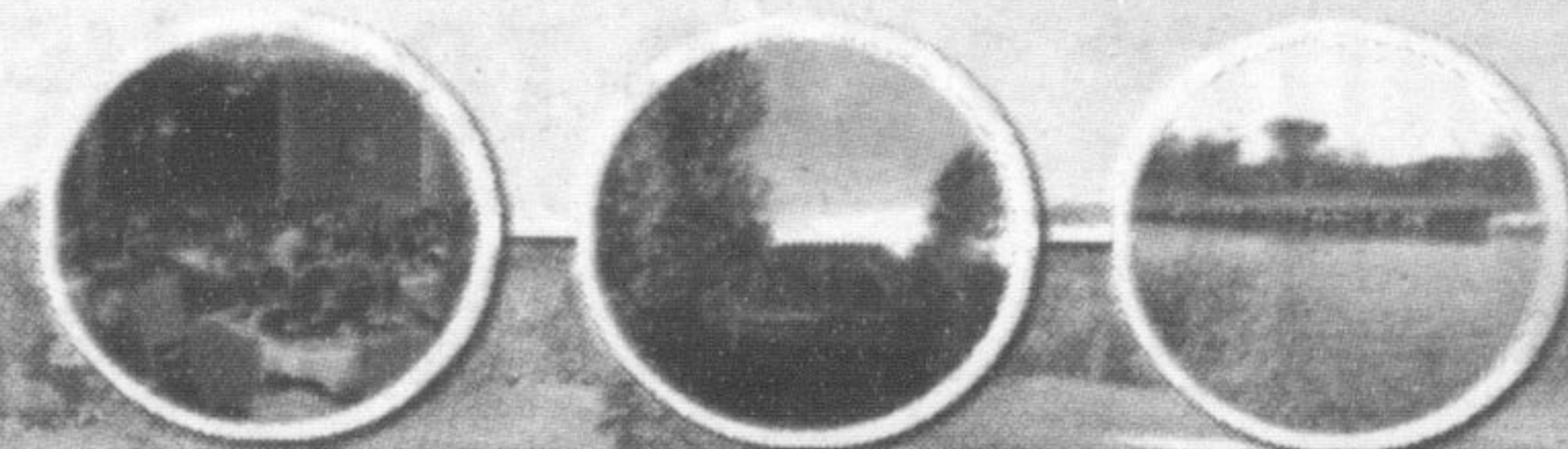
6621 Guelph Line
(Just south of Derry Rd.)

(905) 319-5991

www.crosswindsgolf.com

Featuring an 18 hole Championship Golf Course, Fully Licensed Lounge/Bar with Executive Chef, Driving Range and Practice Facility, Tournaments, Weddings and Special Event Packages.

*Rated 2nd toughest golf course in the GTA, May 2004, Fairways Magazine



Monday to Thursday \$60

Friday to Sunday and Holidays \$70

Earlybird (Every Weekday before 8:30am) \$45

Twilight (Everyday after 3pm) \$45

Hwy 401

Derry Rd.

Crosswinds

N

Lowville

Guelph Line

Dundas (Hwy 5)

QEW