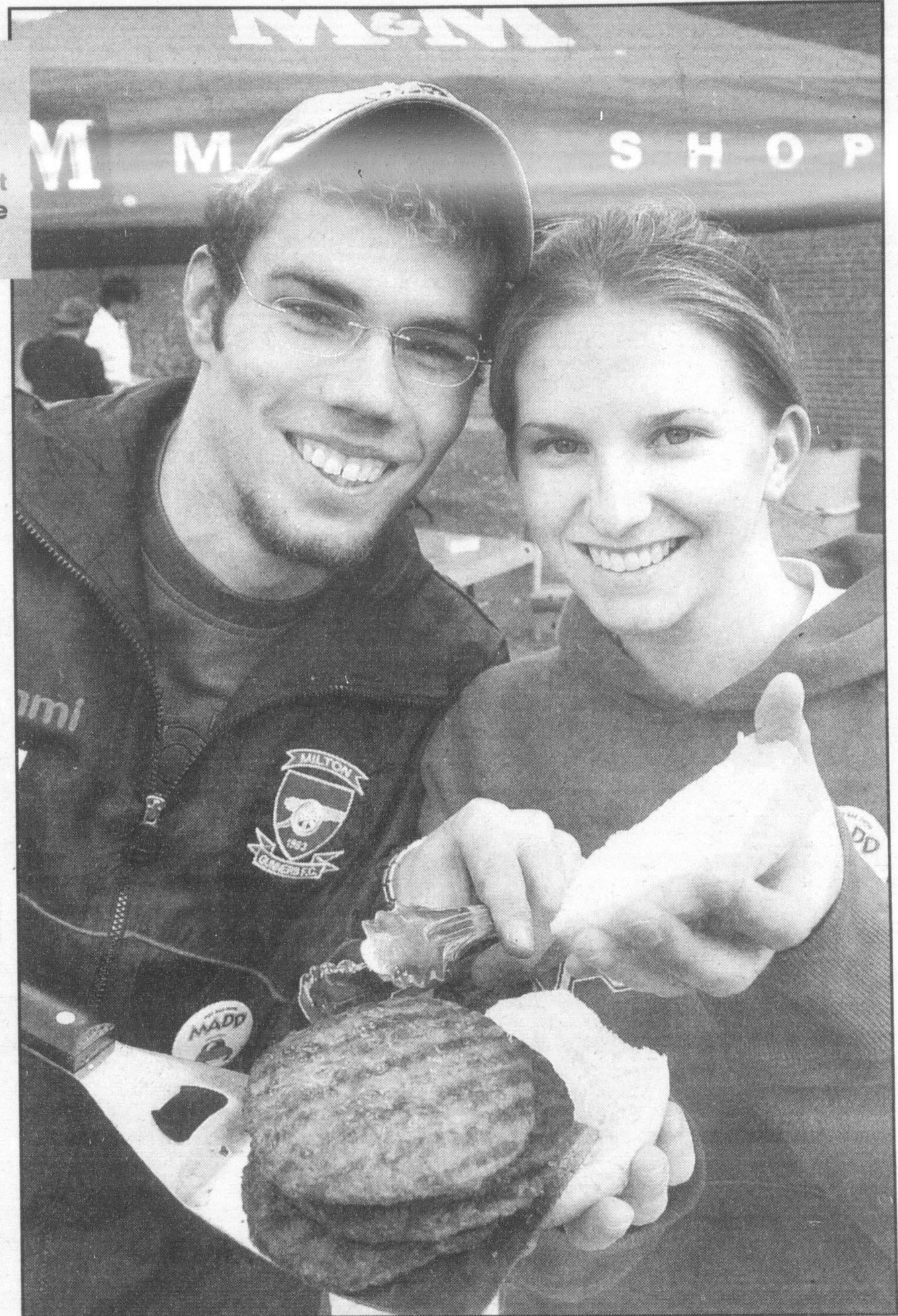


Serving up some tasty treats

Students Kyle Smith and Andrea Johnston serve up burgers at E.C. Drury High School's recent fundraiser for MADD's Halton chapter. M&M Meat Shops donated the use of the barbecue and the burgers, while Loblaws chipped in with the buns for the event, which was organized by Kyle.



The Regional Municipality of Halton
A Partnership That Works!



NOTICE OF PUBLIC INFORMATION CENTRE #1

New Burnhamthorpe Road (Regional Road 27) Transportation Corridor and Potential Future Bridge Crossing of Sixteen Mile Creek, Town of Oakville Class Environmental Assessment Study

The Regional Municipality of Halton has initiated a Class Environmental Assessment for transportation improvements in North Oakville, particularly in the vicinity of Burnhamthorpe Road (Regional Road 27) to satisfy east-west travel demands in the Town of Oakville (refer to study area map shown below). The need to satisfy east-west capacity requirements has been identified in studies such as the Halton Transportation Master Plan (2004). The study is being conducted in compliance with Schedule C of the *Municipal Class Environmental Assessment* (June 2000), which is approved under the Ontario Environmental Assessment Act.

A Public Information Centre (PIC) is planned to provide further information to the public and interested stakeholders and to receive input and feedback on the Study activities completed to date. The following information will be available at the PIC: transportation issues and opportunities; and the assessment of a range of alternative solutions, including:

- Upgrading capacity of existing roadways (Ex. Dundas Street widening to beyond 6 lanes);
- Upgrading capacity of Burnhamthorpe Road including a potential crossing of Sixteen Mile Creek;
- Increased transit services/facilities;
- Reduction in auto usage (Transportation Demand Management);
- Optimization of the existing road network (Transportation Systems Management); and
- Combinations of the above.

The preliminary preferred alternative solution will be presented at this PIC. **Route alternatives will be investigated during the next phase of the Study.** The second PIC, anticipated to be held in early 2006, will present the route alternatives and the preliminary preferred design. The first PIC is scheduled for:

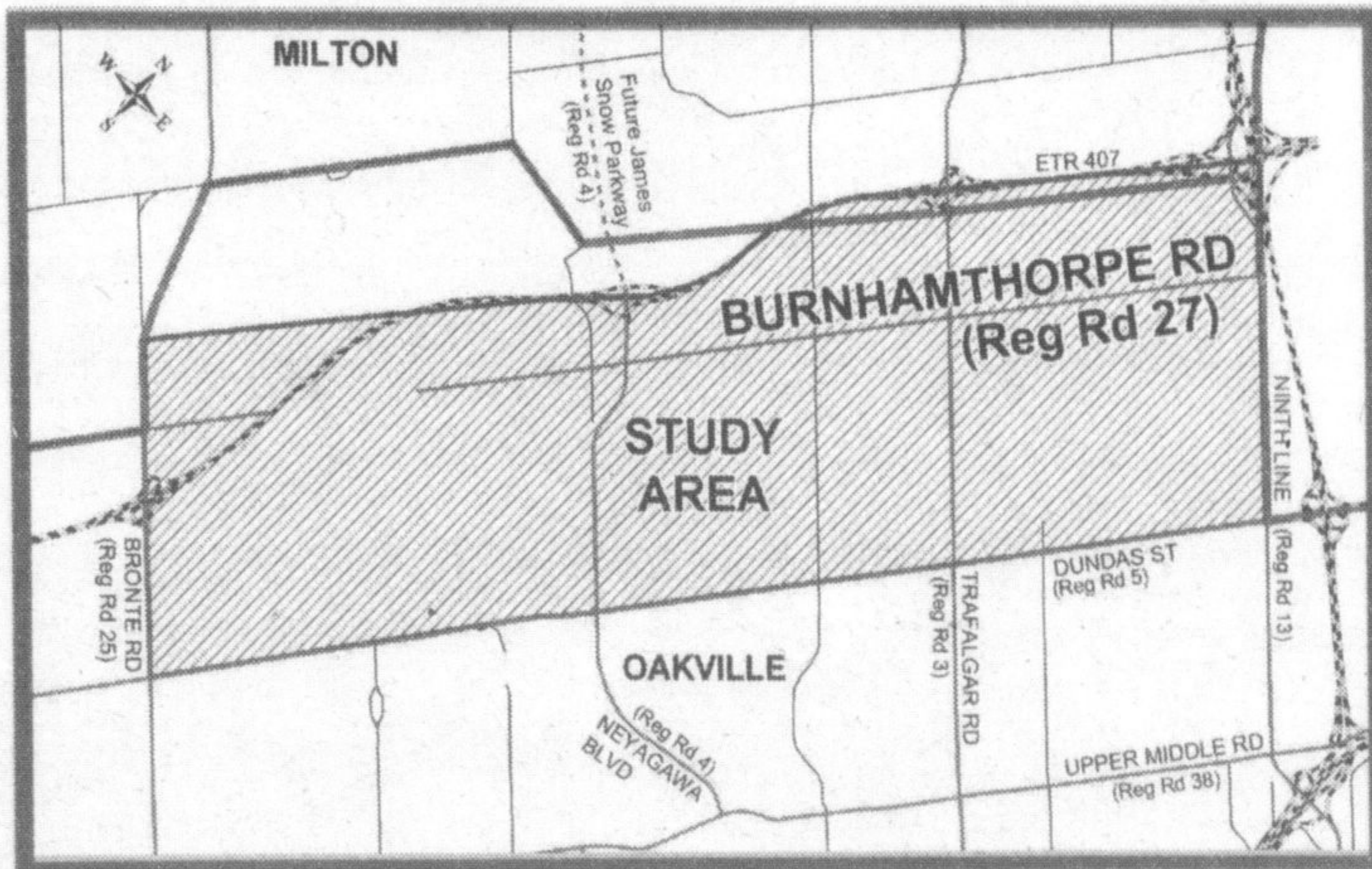
Thursday, June 9, 2005
King's Christian Collegiate - Gymnasium
528 Burnhamthorpe Road West, Oakville
6:00 p.m. to 9:00 p.m.
Open House: 6:00 p.m. to 7:15 p.m.
Presentation at 7:15 p.m., followed by a question and answer period

If you are unable to attend the PIC and wish to fill out a comment sheet or require additional information please contact:

Mr. Edward Soldo, P.Eng.
Manager, Transportation Services
Regional Municipality of Halton
Phone: 905 825-6000, ext. 7475
Fax: 905 825-8822
Email: soldoe@region.halton.on.ca

Mr. Mike Delsey, P. Eng.
Consultant Project Manager
TSH Engineers Architects and Planners
300 Water Street
Whitby, Ontario L1N 9J2
Phone: 1-800 668-1983
Fax: 905 668-0221
Email: mdelsey@tsh.ca

The map below shows the approximate limits of the study area.

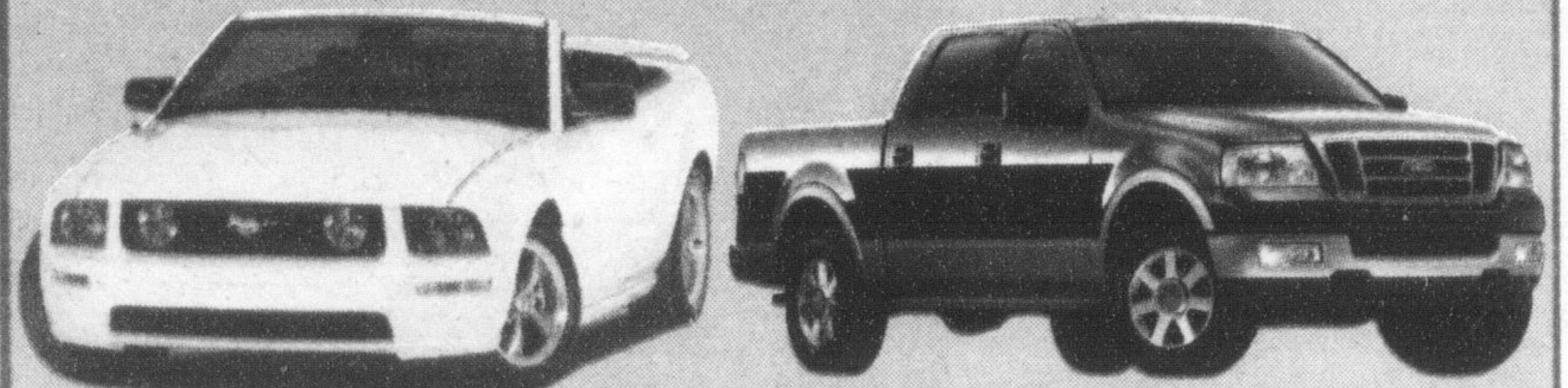


This notice first issued on May 26, 2005 www.region.halton.on.ca/ppw/planningroads

1151 Bronte Road, Oakville, ON L6M 3L1
905-825-6000 Toll free: 1-866-4HALTON (1-866-442-5866) TTY: 905-827-9833
or visit us at: www.region.halton.on.ca



Outstanding Value On Our Entire Line-Up!



BLUE OVAL
LEASE
FINANCING
FROM
0.9%

BLUE OVAL
PURCHASE
FINANCING
FROM
0%

BLUE OVAL
PURCHASE
CREDIT
UP TO
\$7,000

* Selected models + Selected terms, OAC see Dealer for Details

GALLINGER
FORD LINCOLN
655 MAIN STREET EAST, MILTON
www.gallingerford.com
A Tradition of Value & Trust since 1967

