

Report focuses on planning responsible growth in Halton

A recent report from the Federation of Canadian Municipalities (FCM) highlights Halton's need to continue planning responsibly for the region's growth.

Following on the heels of the Provincial Greater Golden Horseshoe Growth Plan, the report from the FCM Quality of Life Reporting System — Growth, the Economy and the Urban Environment — reaffirmed Halton's focus on the key issues necessary for its residents to continue enjoying a high quality of life.

The report examines population and household growth, income and economic growth, municipal solid waste management, transportation and air quality and municipal water supply and water quality.

These areas are reflected in Halton's approach to planning for the future that focuses on the three pillars of sustainable development: the economy, the environment and social equity. FCM's report serves to underscore the importance of using these three criteria to ensure responsible growth.

"Halton Region has always taken a proactive approach, looking ahead to ensure we can meet the demands of future growth so Halton remains a great place to live and work," said Regional Chairman Joyce Savoline.

"This includes identifying oppor-

tunities to maximize our efficiencies, utilize new technologies and develop strong, defensible policies that support our environment and high quality of life."

Halton Region's 2004-2006 Strategic Plan addresses many of the same areas outlined in FCM's report and reflects Halton's ongoing commitment to responsible growth that balances both the urban and rural needs of residents.

This includes planning a comprehensive transportation system, working with other orders of government, businesses and the community to improve local air quality, continuing to provide safe drinking water to local residents and businesses and remaining a leader in waste management practices by continuing to promote and implement programs that will extend the lifespan of Halton's landfill.

Examples of how Halton is addressing growth in the region include:

- The work performed by Halton Region's Joint Municipal Waste Management Committee through updating the Region's Solid Waste Management Strategy to ensure Halton remains a leader in the area of waste management.

- Halton Region and its residents have worked hard to achieve a waste diversion rate of 41.6 per cent — meaning almost 42 per cent of all residential waste collected is

diverted away from Halton's landfill — one of the highest diversion rates in Canada.

- The adoption of Amendment 25 to the Regional Official Plan (OPA 25), concluding a four-year review process. OPA25 achieves a new planning vision that sets a firm urban boundary to accommodate growth to the year 2021, addresses the need for housing choices for all incomes and stages of life, supports Halton's farming community, enhances the greenlands system, commits to improvements in air and water quality and promotes alternate methods of transportation, such as public transit, cycling, and walking.

- The establishment of the Halton Regional Cycling Committee to help ensure the voices of Halton's cyclists are heard and taken into account, especially when implementing cycling-related recommendations included in the Halton Transportation Master Plan. This committee will help ensure that the needs of Halton's cycling community are incorporated where possible into future road enhancements, maintenance and development. A safe and convenient infrastructure will encourage more people to cycle.

For more information on the Growth, the Economy and the Urban Environment report visit the FCM Web site at www.fcm.ca.



2005 Pontiac Sunfire



- 2.2L 140 HP Ecotec Engine
- 4-Speed Automatic
- 5 yr/100,000 km
- Air Conditioning
- Powertrain warranty with \$0 deductible, deterrent system, 60/40 split folding rear seat

PURCHASE PRICE
\$11,998

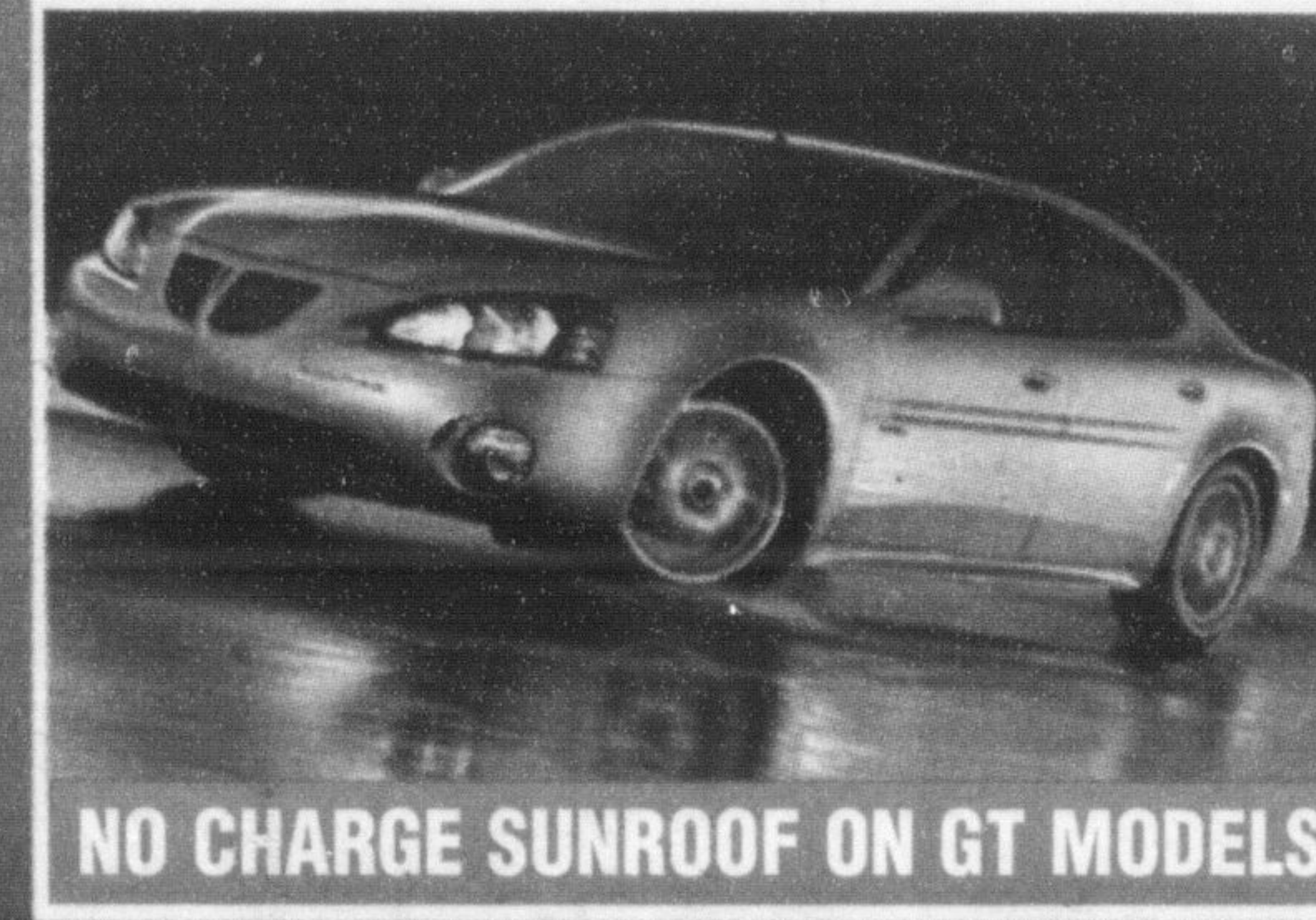
2005 Pontiac Montana SV6



- Montana SV6 RWB R7D
- 3.5L 200-HP V6 Engine
- 4-speed automatic transmission
- 4-wheel disc brakes with ABS
- CD/MP3 player
- Remote keyless entry
- A/C, Power locks/windows/mirrors
- 50/50 fold flat rear seat
- Deep tinted glass
- 5-year/100,000km GM Powertrain
- Warranty with \$0 Deductible*

SMARTLEASE
\$240*
PER MONTH
PURCHASE PRICE
\$20,998

2005 Pontiac Grand Prix



- 200 HP V6 engine
- A/C • Cruise control
- Security package (remote keyless entry with trunk release, panic feature & audible/visible theft deterrent system)
- Power windows
- Power remote control mirrors

SMARTLEASE
\$236*
PER MONTH
PURCHASE PRICE
\$27,258

2005 Pontiac Pursuit



- 2.2L 145-HP ECOTEC Engine
- 4-speed auto with overdrive
- Air Conditioning
- Spoiler, 15" wheels
- CD Stereo
- Tilt adjustable Steering column
- 60/40 Split folding rear seat
- 5-year/100,000km GM Powertrain warranty with \$0 deductible

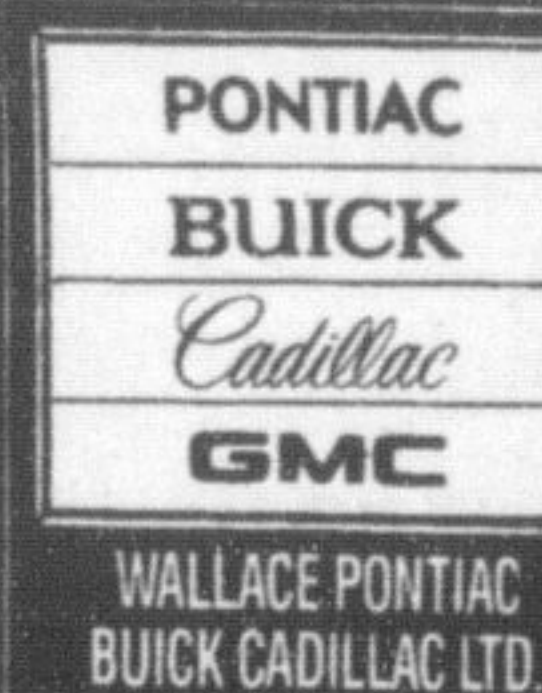
SMARTLEASE
\$174*
PER MONTH
PURCHASE PRICE
\$18,298

2005 GMC Sierra Nevada Crew Cab



- Vortec 5300 295-HP V8 Engine
- 4-speed auto with overdrive and tow/haul mode
- Full crew cab with 5'8" box, Deep tinted glass
- Autotrac automatic 4WD, 4-wheel ABS
- Locking differential, Dual zone A/C, Fog lights
- Tilt, cruise, power windows, locks with keyless remote, power mirrors rear defroster
- AM/FM/CD Player
- 17" 6-spoke Aluminum wheels

SMARTLEASE
\$309*
PER MONTH
PURCHASE PRICE
\$37,698



Wallace
PONTIAC • BUICK • CADILLAC
905-878-2355

801 MAIN ST. E. MILTON
MON. - THURS. 9:00 AM - 8:00 PM
FRI. & SAT. 9:00 AM - 6:00 PM

Smartlease are based on 48 months and include 80,000 km with \$0.12 over and are plus freight, down payment (Grand Prix \$3120, Pursuit \$2625, Montana SV6 \$4000, Nevada \$3425), license and applicable taxes down on approved credit. Cash prices are plus freight, taxes and license. All rebates assigned to dealer. See dealer for complete details. *\$1000 cash back incentive applied to above prices for 2005 Nevada Crew Cab.

La Rose
Italian Bakery and Delicatessen

Fresh Bread and Buns Baked daily 7 days a week!

Visit our Garden Centre NOW OPEN!

All Vegetable Plants \$1.29

Mountain Boxwood \$9.99
1 gallon pot

Come See Us At The...

ARTS MILTON FESTIVAL!!

We'll be serving up delicious sweets under the Taste of Milton Tent.

SATURDAY MAY 28, 2005 FROM 10AM-10PM AT THE MILTON FAIRGROUNDS

Bakery Special

Fresh... Baked Daily!

Vienna Stick Bread **69¢**
Loaf

7" Black Forest Cake **\$13.99**
Made with real 35% whipped cream

Produce Specials

Product of Ontario
No. 1 Grade Fresh... Asparagus **\$1.99**
lb.

Product of U.S.A.
No. 1 Grade Green Seedless Grapes **\$1.99**
lb.

Product of U.S.A.
No. 1 Grade Fresh... Tasty Peaches **99¢**
lb.

Deli Specials

Brandt's Oven Roasted Chicken Breast **\$5.99**
lb OR 1.32/100g

Brandt's Kolbassa Meatloaf **\$3.49**
lb OR .77/100g

Vera Mortadella **\$3.99**
lb OR .88/100g

Genoa Salami (Mild or Hot) **\$5.99**
lb OR 1.32/100g

SPECIALS IN EFFECT FROM TUES. MAY 24TH TO MONDAY MAY 30TH 2005.

327 Bronte Street S. • White Oaks Plaza
905-875-0303

Regular Store Hours
Mon.-Thurs. 8:30 am - 7 pm
Friday 8:30 am - 8 pm
Saturday 8:30 am - 6 pm
Sunday 9:00 am - 5 pm