

Business without advertising is like winking in the dark ~ You know what you're doing ~ but nobody else does!

HAIR
associates

INTRODUCES JENNA...
our new Junior hair stylist

Colour, Cut & Style for **\$50**

FOILS: Up to 3 Colours, Cut & Style for **\$100**



Please call for an appointment
162 Main St. E., Milton
905-878-2030

We believe... in helping. Anyone. Anywhere.



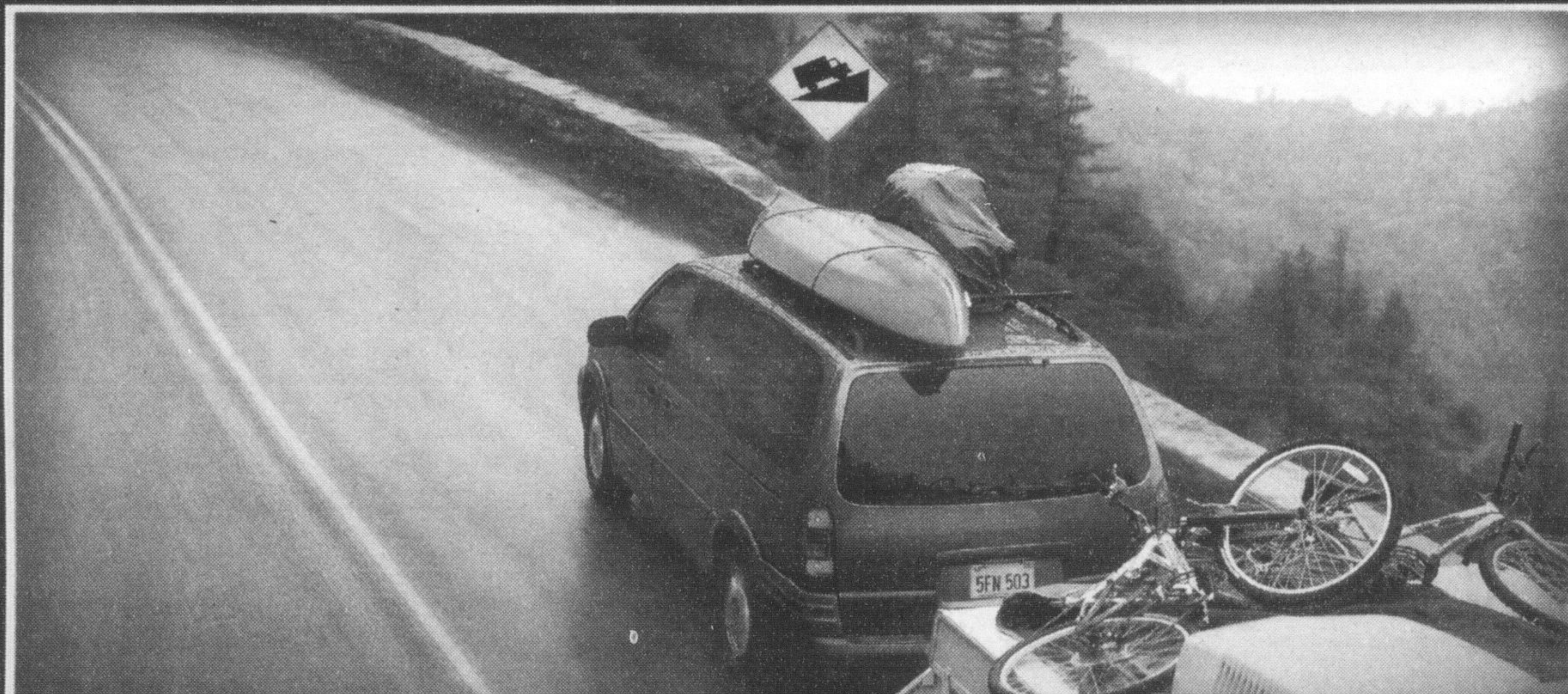
PLEASE GIVE
1-888-321-3433



Sampling their tasty treats

The 1st Campbellville Sparks are busy selling Girl Guide cookies, which feature the traditional vanilla and chocolate treats, during their spring campaign. Here, Sparks (from left) Samantha Wrigglesworth, Alyssa Sparling-Fiori and Bronte Martin indulge in a few of their favourites.

Photo by GRAHAM PAINE



THE MOMENT PROPER MAINTENANCE MATTERS

Your schedule can't afford brake problems. So take it to the people who know it best. Your GM Goodwrench technician gets it right the first time, so you can be on time.

BRAKE MAINTENANCE SERVICE

Clean debris & corrosion • lubricate caliper sliders/pins & backing plates • adjust parking brake cable (rear only) • road test

Front or rear disc brake
\$59.95[†]
plus tax

FRONT BRAKE PAD REPLACEMENT

Installation of new front pads or linings with GM-approved DuraStop® parts • brake fluid top-up • check lateral run out • limited lifetime warranty on pads • machining of rotors & correcting lateral run-out, extra if required • road test

Passenger cars from
\$119.95[†]
plus tax

Light duty trucks from
\$139.95[†]
plus tax

Our GM recommended maintenance schedule could significantly reduce your service visits. It's so comprehensive that just two inspections a year, plus regular oil changes keeps your vehicle protected and ready for anything. And no one does it better than the people who created it.

SEMI-ANNUAL MAINTENANCE SERVICE PACKAGE

Inspect: restraint system • throttle system • fuel system • automatic/manual transmission/transaxle • engine air cleaner filter • wiper blades • engine cooling system • brakes & tires • steering & suspension • exhaust system AND rotate your tires & lubricate weatherstrips

\$49.95[†]
plus tax

ANNUAL MAINTENANCE SERVICE PACKAGE

Includes: all services performed in the Semi-Annual Service PLUS: lubrication of body & key lock AND check: • starter switch • automatic transaxle shift lock control system • ignition transaxle lock • parking brake & automatic transaxle park mechanism

\$69.95[†]
plus tax

Exclusively at GM Dealerships.



Goodwrench Service

Right. On time.

CYPRESS INTIMATE APPAREL

now in bloom
sleepwear & clothing
by point zero

171 Main St. E. Milton
905-693-0932
www.cypressintimate.com

MILTON OPTICAL

MAY
FRAME SALE

LARGE SELECTION OF FRAMES AVAILABLE!

Sale Ends May 31/05. JAI KUDO

Carriage Square
15 Martin St., Milton **876-0556**

FREE TO AIR

- Pansat Receivers
- Dishes
- DISEQC Switches
- LNB's
- Installation Available

Milton Colour & Sound
18 Thompson Road
905-876-1175
miltoncolour@stn.net

We Service What We Sell
Repairs to All TVs & Stereos

1-800-GM-DRIVE goodwrench.gmcanada.com. †Offers not available in Thunder Bay, Fort Frances, Dryden, Terrace Bay and Kenora. LOF extra, if required. Participating GM Dealerships may set individual prices. Offers valid on select GM vehicles for a limited time only to retail customers. See Service Advisor for more details. •DuraStop is a registered trademark of ACDelco.