


BE A DESIGNATED DRIVER



Join the many people who agree not to drink alcoholic beverages...and to drive everyone in their group home safely.

Dateline

Saturday May 7

St. Paul's United Church, 123 Main St. E., holds a **plant sale** from 7:30 a.m. to noon. Perennials cost \$2.50 each or 10 varieties for \$22. The church's UCW group holds its **Spring Tea** at 1 p.m. with guest speaker Bonnie Simonato speaking on 'How to be Your Own Best Gardener.' Tickets cost \$6 and include light refreshments.

The Milton and District Horticultural Society holds its **Spring Flower Show** at Allendale in the auditorium.

The Women's Centre, 210-1515 Rebecca St., in Oakville holds its four-week **Steps to Successful Parenting** workshop from 10 a.m. to noon. The cost is \$35. For more information or to register, call (905) 847-

5520.

The Salvation Army, 100 Nipissing Rd., unit 3, holds its **yoga workout** from 9:30 to 10:45 a.m. and its **book club** from 11 a.m. to noon. For more information, call (289) 242-1432 or e-mail jen@khicommunity.com.

Euchre takes place at the Hornby cooperative nursery school at 7:30 p.m. Everyone's welcome to attend.

The Milton Lawn Bowling Club on Commercial Street holds its "**More-Than-a-Garage-Sale**" fundraiser from 8 a.m. to 1 p.m. with plants, a bake sale, household items, a 50-50 draw, a silent auction and more. For more information, call (905) 878-6802.

The Halton Region Museum presents its **Hearthside series** from 6 to 11 p.m. with

an evening of musical entertainment featuring The Daredevils of Soul and dinner in the historic Hearth Room. Doors open at 6 p.m. and dinner is at 7 p.m. Tickets cost \$45 per person and are available by calling (905) 875-2200, ext. 21 in advance or visiting www.region.halton.on.ca/museum.

The Milton Kinettes hold a **charity barbecue** in support of cystic fibrosis in the Loblaws parking lot from 11 a.m. to 3 p.m.

Saturday May 7 - 8

St. Paul's United Church, 123 Main St. E., holds its **Elvis Gospel Concert** with Stephen Kabakos at 7:30 p.m. Saturday and 3 p.m. Sunday. Tickets cost \$22.50 and are available by calling Jack White at (905) 878-6807 or the church office at (905) 878-8895.

Monday May 9

The Town of Milton's Community Services Department holds **registration** for a new co-ed beach volleyball league for people 18 and older at the Milton Leisure

Centre, 1100 Main St. E., from 6:30 to 9 p.m. For more information, visit www.milton.ca, e-mail recreation@milton.ca or call (905) 878-7252, ext. 2754.

Wellspring Halton-Peel, a support network for cancer patients and their families, holds its drop-in **Lymphoma Support Group** from 7 to 8:30 p.m. at 2545 Sixth Line in Oakville. For more information, call (905) 257-1988.

The Milton Seniors' Activity Centre, 500 Childs Dr., holds its **CyberCafé** from 1 to 4 p.m. The cost is \$2 for members and \$4 for non-members. For more information, call (905) 875-1681.

The **Milton Lawn Bowling Club** on Commercial Street invites the public to try out the sport at 7:15 p.m.

The **Oakville Osteoporosis Group** meets at 1:30 p.m. at St. Michael's Church, 181 Sewell Dr., in Oakville with a speaker discussing incontinence. For more information, call Phyllis Spillone at (905) 829-4863.

Tuesday May 10

Milton District Hospital and the Halton Region Health Department present '**From Puberty to Pregnancy — A Symposium on Health for the Young Adult Woman.**' • see more DATELINE on page 16

NISSAN

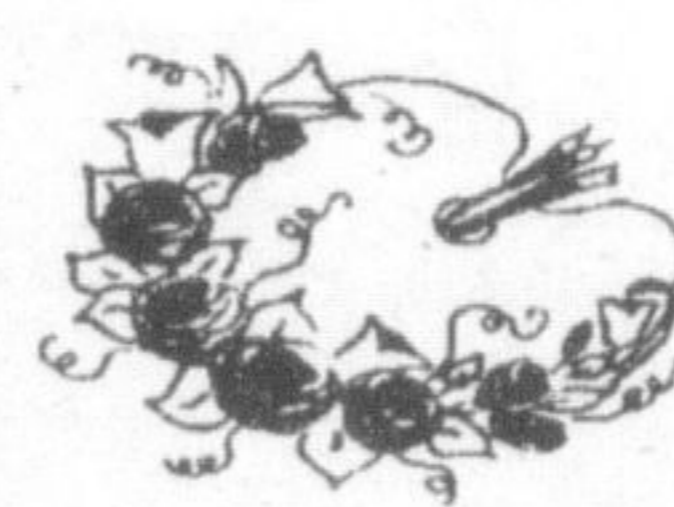
President's Award of Merit

2004 WINNER

HIGHEST HONOUR FOR DEALER EXCELLENCE

North End Nissan

610 Martin Street,
Milton



Paintin' Friends

Decorative Art Studio

77 Mill St. E., Acton

(10 minutes west of Georgetown on Hwy #7)

OPEN HOUSE & REGISTRATION DATES

Thurs. May 5 10:00 am - 9:00 pm
Fri. May 6 10:00 am - 9:00 pm
Sat. May 7 10:00 am - 5:00 pm

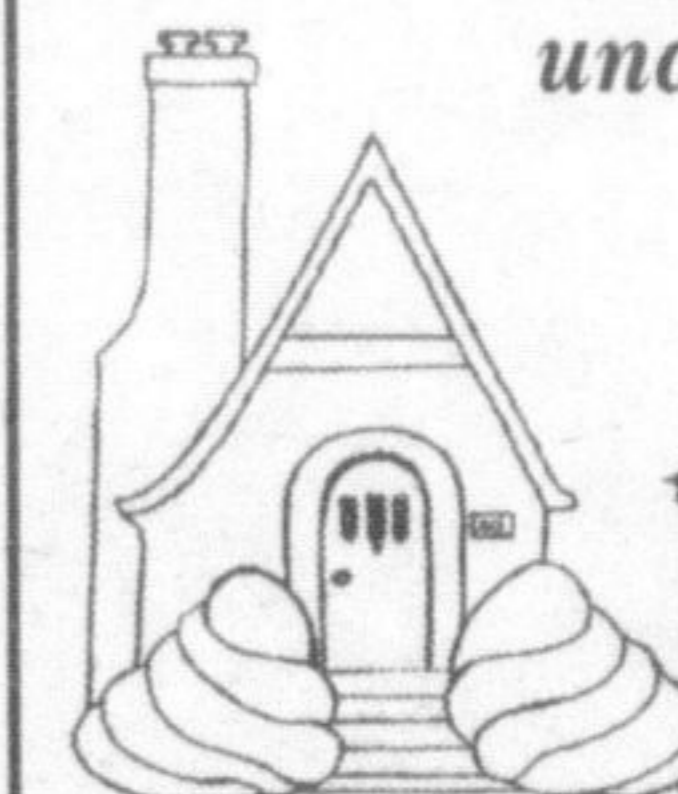
BEGINNER'S CLASSES START MAY 24

519-853-0777

www.paintinfriends.ca

FAMILY CHIROPRACTIC CARE

under my roof



Dr. Angelika Koeth

311 Martin Street, Milton

(905) 878-5165

The Q-Tip principal - Quit taking it personally!

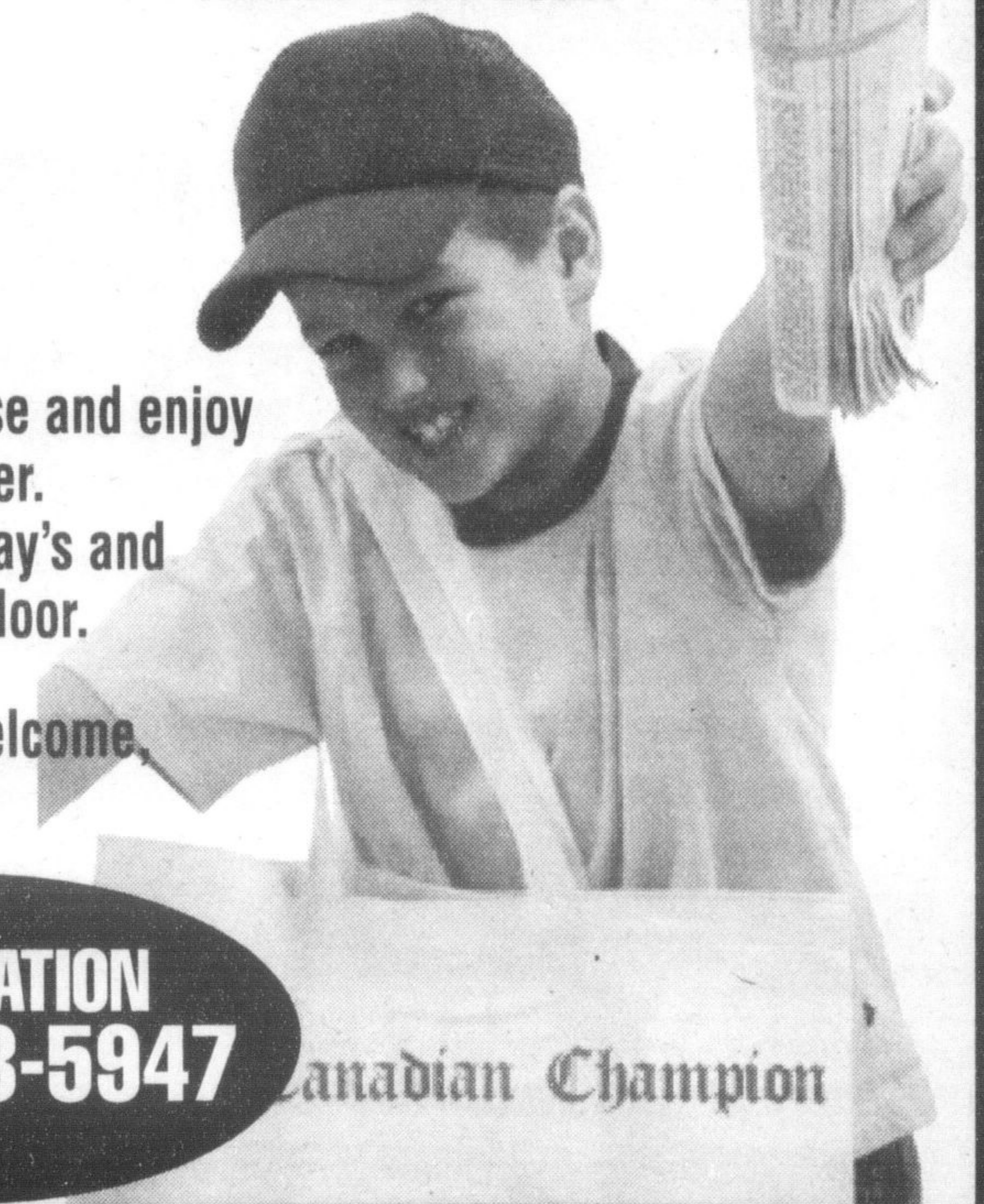
MILTON IS GROWING AGAIN... AND WE ARE LOOKING FOR CARRIERS TO DELIVER THE MILTON CHAMPION ON THE FOLLOWING STREETS:

Maple Ave.
Birch Ave.
Woodward Ave.
Fourth Line
Caves Court
Martin Street
Hartley Blvd.

McNabb Cres.
Cabot Trail
Traham Bell Court

Get some exercise and enjoy the spring weather. Deliveries Tuesday's and Friday's door to door.

Adult Carriers welcome. Contact Sandy



CIRCULATION 905-878-5947

Canadian Champion