

Regional council endorses response to growth plan

A second municipal and regional response paper to the Province's draft growth plan that forecasts a population of 800,000 in Halton by 2031 has been endorsed by Halton council and is off to the Minister of Public Infrastructure Renewal.

The plan builds on the Places to Grow discussion paper released by the Ministry of Public Infrastructure Renewal last July. It's a document aimed at stopping urban sprawl and focusing compact development on 25 urban growth centres, including downtown Milton, midtown Oakville and downtown Burlington.

The joint response that council approved Wednesday says Halton and its municipalities fully support the plan's vision and guiding principles.

A presentation from Halton Director of

Planning and Transportation Jane Clohecy noted the response also says:

- Infrastructure building must give priority to building transit connecting urban centres.

- A vision for Ontario agriculture must be developed to understand the value and future of farming in the Greater Golden Horseshoe.

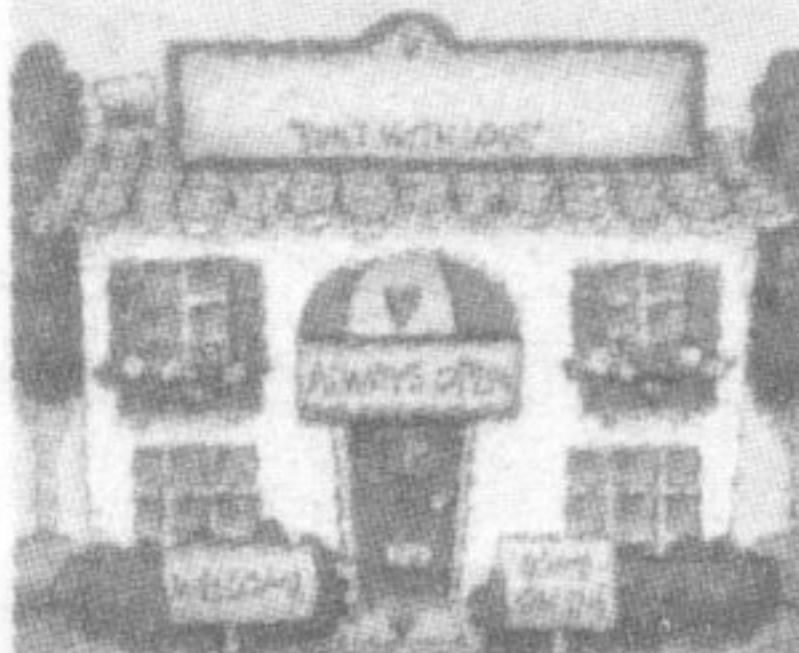
- Affordable housing will require sustainable funding and incentives.

- Sub-area growth strategies must not duplicate current municipal planning.

- The Region should be responsible for distribution of growth among the local municipalities.

For more information on the plan, visit www.placestogrow.pir.gov.on.ca or www.region.halton.on.ca.

Baba's Attic



unique decorating

home & garden

new & used furniture



905-693-9401
184 Main St

Sonja Williamson
Owner-Decorator

Theft attempted at Wal-Mart

Police are investigating whether an attempted theft at Wal-Mart last week is connected to a number of similar incidents across Ontario.

Police said they were called to the Steeles Avenue department store at about 4:30 p.m. April 28 after store investigators witnessed two men removing Sony PSPs (hand-held PlayStation units) from a locked display case.

Two suspects were arrested as they attempted to evade police. Sony PSPs and equipment for unlocking display cases was found at the scene.

What appeared to be "illegal substances" were also found during the course of the

investigation, said Sgt. Jeff Corey of Halton Regional Police.

Police are investigating links between this theft and others executed in a similar manner in stores across southern Ontario, Sgt. Corey said, adding he suspects a group of "professional thieves."

A 35-year-old Toronto man and a 26-year-old Scarborough man have each been charged with theft under \$5,000, possession of stolen goods under \$5,000, possession of burglary tools and possession of drugs. The Toronto man has also been charged with obstructing police by using a false name and two counts of breach of probation.

Showcase Milton

...more than a Home and Leisure Show!

See us at
Booth #234

2005 Pontiac Sunfire



- 2.2L 140 HP Ecotec Engine
- 4-Speed Automatic
- 5 yr/100,000 km
- Air Conditioning
- Powertrain warranty with \$0 deductible, deterrent system, 60/40 split folding rear seat

SMARTLEASE
\$177*
PER MONTH

PURCHASE PRICE
\$12,988

2005 Pontiac Montana SV6

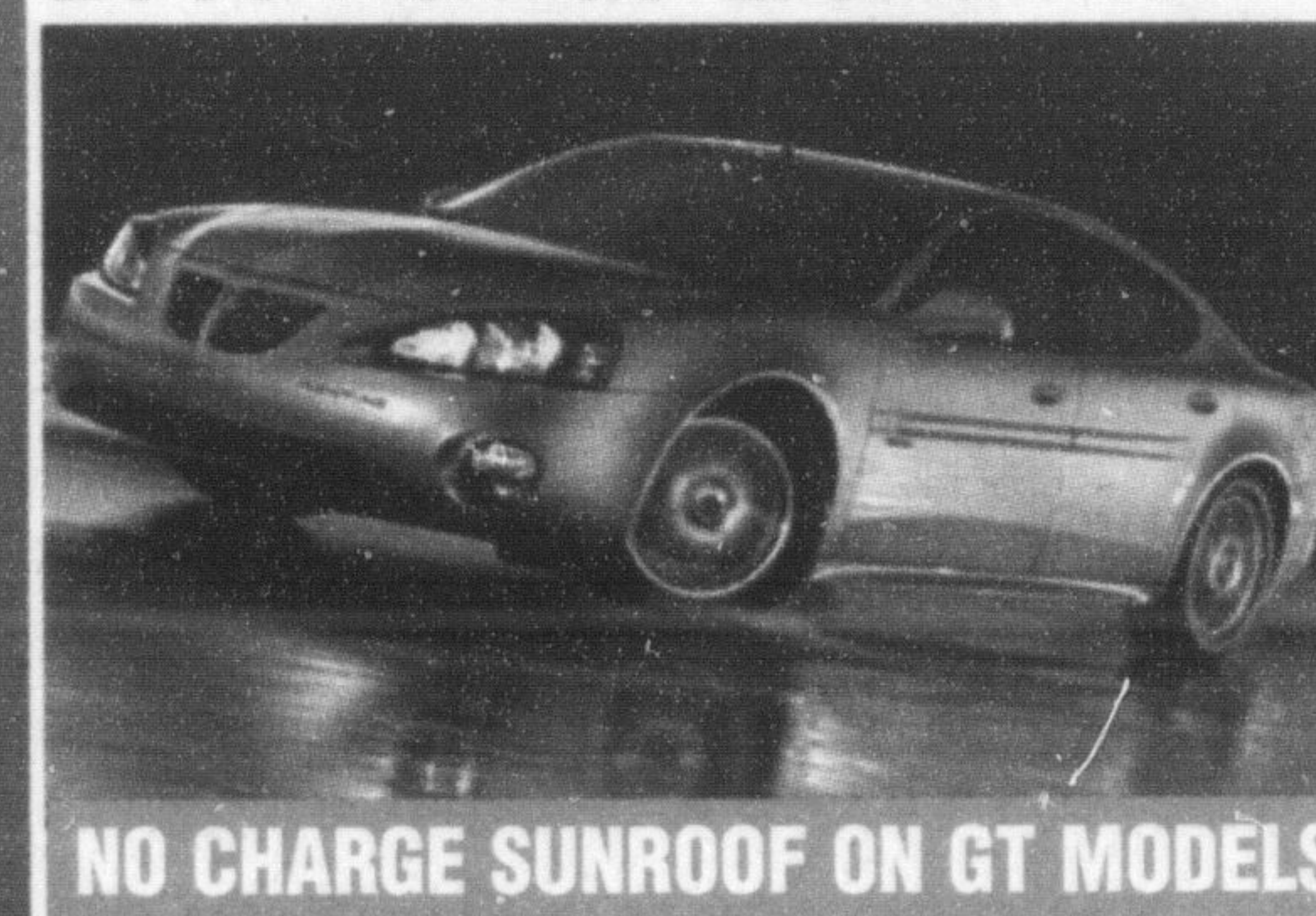


- Montana SV6 RWB R7D
- 3.5L 200-HP V6 Engine
- 4-speed automatic transmission
- 4-wheel disc brakes with ABS
- CD/MP3 player
- Remote keyless entry
- A/C, Power locks/windows/mirrors
- 50/50 fold flat rear seat
- Deep tinted glass
- 5-year/100,000km GM Powertrain
- Warranty with \$0 Deductible*

SMARTLEASE
\$240*
PER MONTH

PURCHASE PRICE
\$20,798

2005 Pontiac Grand Prix



- 200 HP V6 engine
- A/C • Cruise control
- Security package (remote keyless entry with trunk release, panic feature & audible/visible theft deterrent system)
- Power windows
- Power remote control mirrors

SMARTLEASE
\$274*
PER MONTH

PURCHASE PRICE
\$25,218

NO CHARGE SUNROOF ON GT MODELS

2005 Pontiac Pursuit



- 2.2L 145-HP ECOTEC Engine
- 4-speed auto with overdrive
- Air Conditioning
- Spoiler, 15" wheels
- CD Stereo
- Tilt adjustable Steering column
- 60/40 Split folding rear seat
- 5-year/100,000km GM Powertrain warranty with \$0 deductible

SMARTLEASE
\$188*
PER MONTH

PURCHASE PRICE
\$18,298

2005 GMC Sierra Nevada Crew Cab

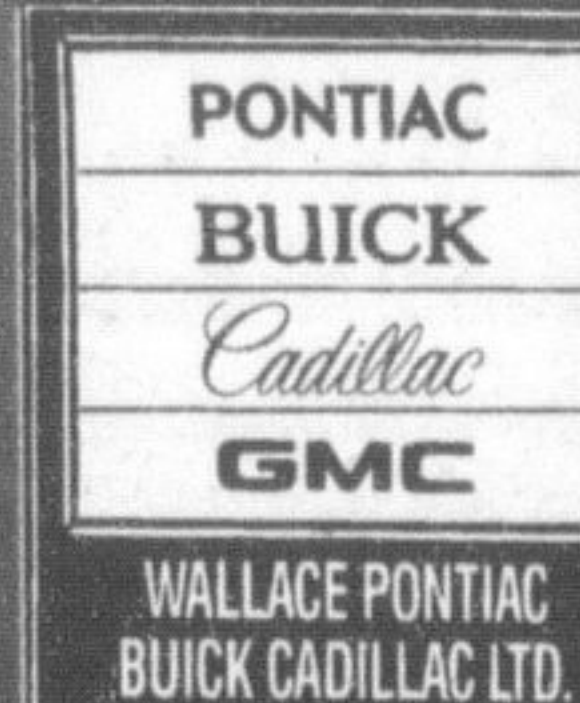


- Vortec 5300 295-HP V8 Engine
- 4-speed auto with overdrive and tow/haul mode
- Full crew cab with 5'8" box, Deep tinted glass
- Autotrac automatic 4WD, 4-wheel ABS
- Locking differential, Dual zone A/C, Fog lights
- Tilt, cruise, power windows, locks with keyless remote, power mirrors rear defroster
- AM/FM/CD Player
- 17" 6-spoke Aluminum wheels

SMARTLEASE
\$309*
PER MONTH

PURCHASE PRICE
\$37,698

SPECIAL EDITION \$1000 CASHBACK



Wallace

PONTIAC • BUICK • CADILLAC

905-878-2355

801 MAIN ST. E. MILTON
MON. - THURS. 9:00 AM - 8:00 PM
FRI. & SAT. 9:00 AM - 6:00 PM

TOLL FREE 1-888-878-2354

SmartLease are based on 48 miles and include 80,000 km with \$0.12 over and are plus freight, down payment (Grand Prix \$2300, Pursuit \$2625, Montana SV6 \$4000, Nevada \$3425, Sunfire \$3300) license and applicable taxes down on approved credit. Cash prices are plus freight, taxes and license. All rebates assigned to dealer. See dealer for complete details. OAC: *1000 cash back incentive applied to above prices for 2005 Nevada Crew Cab.

La Rose

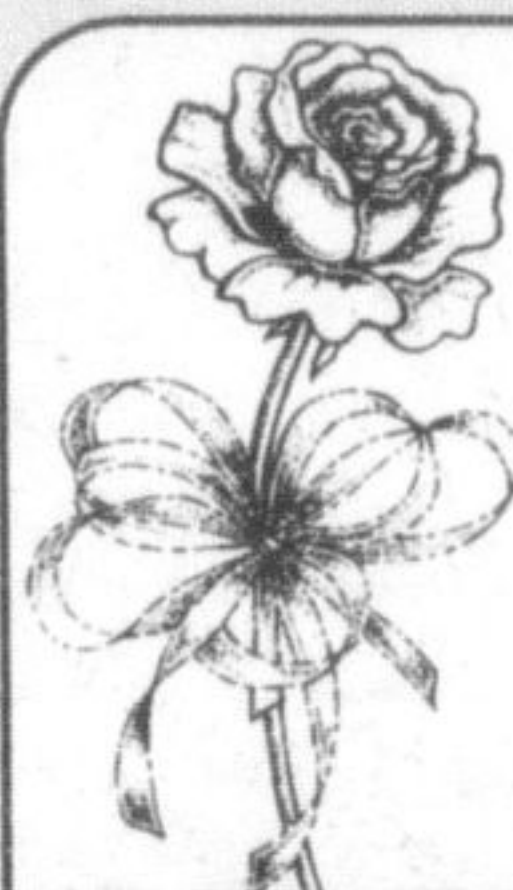
Italian Bakery and Delicatessen

Fresh Bread and Buns Baked daily 7 days a week!

Bakery Special

Light Rye Bread
Plain or Caraway

\$1.49 **\$2.69**
Small Loaf Large Loaf



Treat your Mom on Mother's Day!

Indulge in our decadent Cakes and Pastries all made fresh on premises!
Imported Chocolates, Great Giftware, Hanging Baskets & Fresh Cut Flowers!

Garden Centre
OPENING THIS WEEKEND!

Deli Specials

Brandt's Corned Beef **\$3.49**
lb OR .77/100g

Brandt's Kolbassa Coil **\$3.49**
lb OR .77/100g

Casa Italia Lean Milano Salami **\$5.99**
lb OR 1.32/100g

Balderson Marble Cheddar Cheese **\$4.99**
lb OR 1.10/100g

Produce Specials

Product of U.S.A., No. 1 Grade
Fresh... ROMAINE LETTUCE **\$1.29**
ea.



Product of Ont., No. 1 Grade
Fresh... Hot House TOMATOES **\$1.49**
lb.



Product of Chile, No. 1 Grade
Fresh... Sweet Seedless Green GRAPES **\$1.49**
lb.



Fresh from the Tropics
No. 1 Grade
Golden PINEAPPLES **\$2.99**
ea.



SPECIALS IN EFFECT FROM TUES. MAY 3RD TO MONDAY MAY 9TH 2005.

327 Bronte Street S. • White Oaks Plaza
905-875-0303

Regular Store Hours
Mon.-Thurs. 8:30 am - 7 pm
Friday 8:30 am - 8 pm
Saturday 8:30 am - 6 pm
Sunday 9:00 am - 5 pm