

PURCHASE FOR

\$19,988*

OR LEASE FOR

\$199††

A MONTH FOR
48 MONTHS WITH
\$4,995 DOWN PAYMENT.
\$0 SECURITY DEPOSIT.



2005 DODGE CARAVAN

- 3.3L 180hp V6 engine • Air conditioning • Speed Control • Coloured keyed fascias
- Power window, locks & mirrors • AM/FM/CD stereo
- Multistage driver & front passenger air bags • Sentry-Key™ Engine Immobilizer
- City: 12.2L/100 km (23 mpg) • Hwy: 8.2L/100 km (34 mpg)

2005 DODGE CARAVAN SPECIAL EDITION

- ADDED FEATURES INCLUDE:**
- Power rear quarter vents
 - Door trim with map pocket • Body-colour liftgate bar • One-touch down power driver window • Unique "Reflex" wheel covers • Deluxe insulation
 - Tachometer • Body-colour door handles • Special Edition badging

AN \$880 VALUE!

INCLUDES



2005 CHRYSLER 300

- 3.5L 250 HP High-Output V6 engine • 4 spd automatic transmission • anti-lock 4-wheel disc brakes with all-speed traction control • rear-wheel drive with electronic stability program (ESP™) • air conditioning • power windows, door locks & mirrors (heated, fold-away) • fog lamps • AM/FM stereo radio, CD player with changer controls • remote keyless entry • Sentry-Key™ engine immobilizer • speed control • advanced, multistage driver and front-passenger air bags with occupant classification system (OCS) • Made in Canada

PURCHASE FOR
\$29,995*

OR CHOOSE
\$399†† A MONTH FOR
48 MONTHS WITH
\$0 DOWN PAYMENT.
\$0 SECURITY DEPOSIT.



2005 CHRYSLER SEBRING SEDAN

- 2.4L 180 HP V6 engine • Coloured keyed fascias • Air conditioning • Speed control
- Power windows, locks and mirrors • AM/FM/CD stereo • Sentry-Key™ engine immobilizer
- Multistaged driver & front passenger air bags

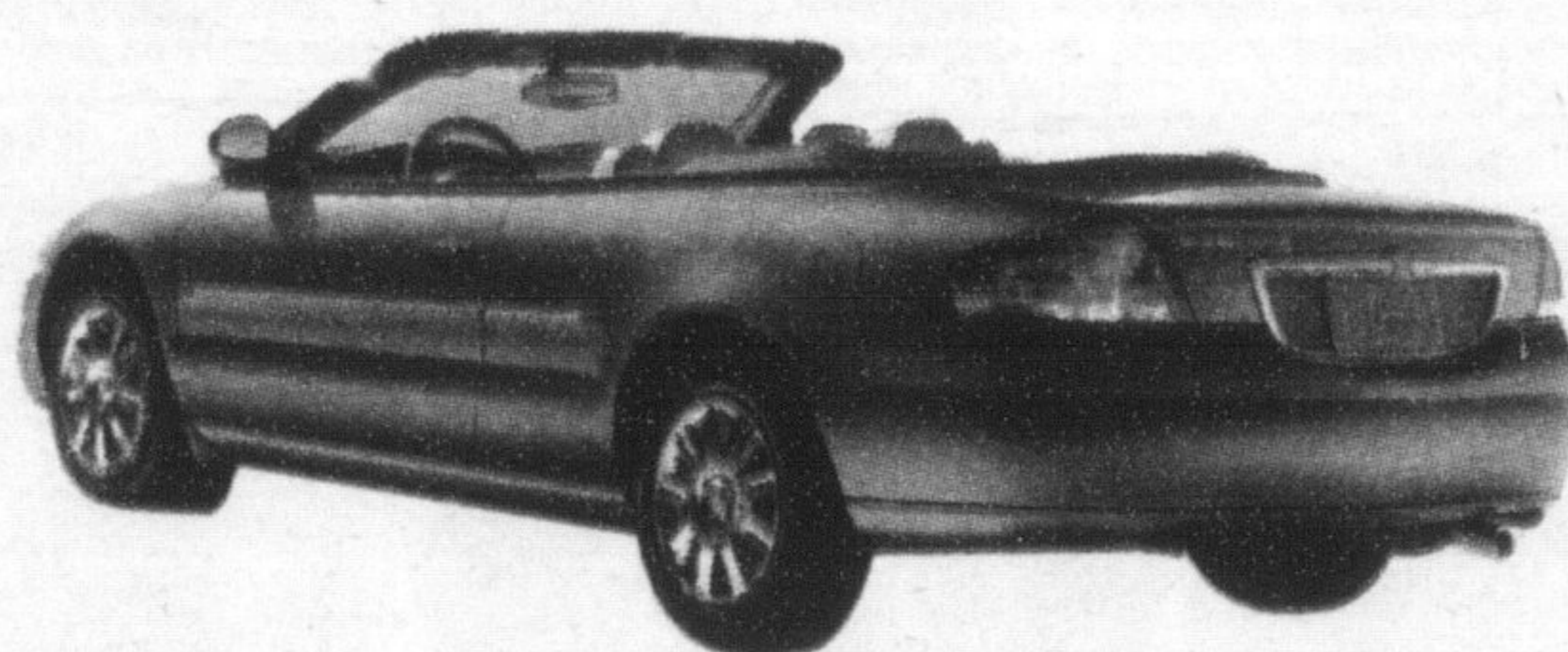
PURCHASE FOR
\$18,998* OR CHOOSE
0% PURCHASE FINANCING
FOR 60 MONTHS

ENJOY FREE AIR CONDITIONING IN OUR FLEET OF CONVERTIBLES!



2005 CHRYSLER PT CRUISER TOURING CONVERTIBLE

- 2.4L 150 HP DOHC 4-cyl engine • 5 spd manual transmission • security alarm • air conditioning
- AM/FM stereo with CD player and six premium speakers • Touring suspension
- power windows, locks and mirrors • remote keyless entry
- 50/50 split, fold-and-tumble™ rear seats • 16" brushed aluminum wheels
- power convertible top • next-generation driver and front passenger air bags



2005 CHRYSLER SEBRING CONVERTIBLE

- 2.7L 200 HP DOHC V6 engine • 4 spd automatic transmission • air conditioning
- power windows, locks and mirrors • power operated convertible top • speed control
- AM/FM stereo with single CD player and six speakers • 4 wheel disc brakes • touring suspension
- 16" cast aluminum wheels • Sentry-Key™ engine immobilizer
- next generation driver and front passenger air bags



2005 CHRYSLER CROSSFIRE ROADSTER LTD.

- 3.2L 215 HP SOHC V6 engine • 5 spd automatic transmission with auto/stick™
- dual-zone semi-automatic temperature control • power windows, locks and mirrors
- 240-watt AM/FM/CD stereo with six Infinity™ speakers • 4-wheel disc brakes with ABS
- rear-wheel drive with electronic stability program (ESP™) • power operated convertible top
- next generation driver and front-passenger air bags

CHOOSE 0% PURCHASE FINANCING ON MOST NEW 2005 CHRYSLER VEHICLES



500 BRONTE ST. S.

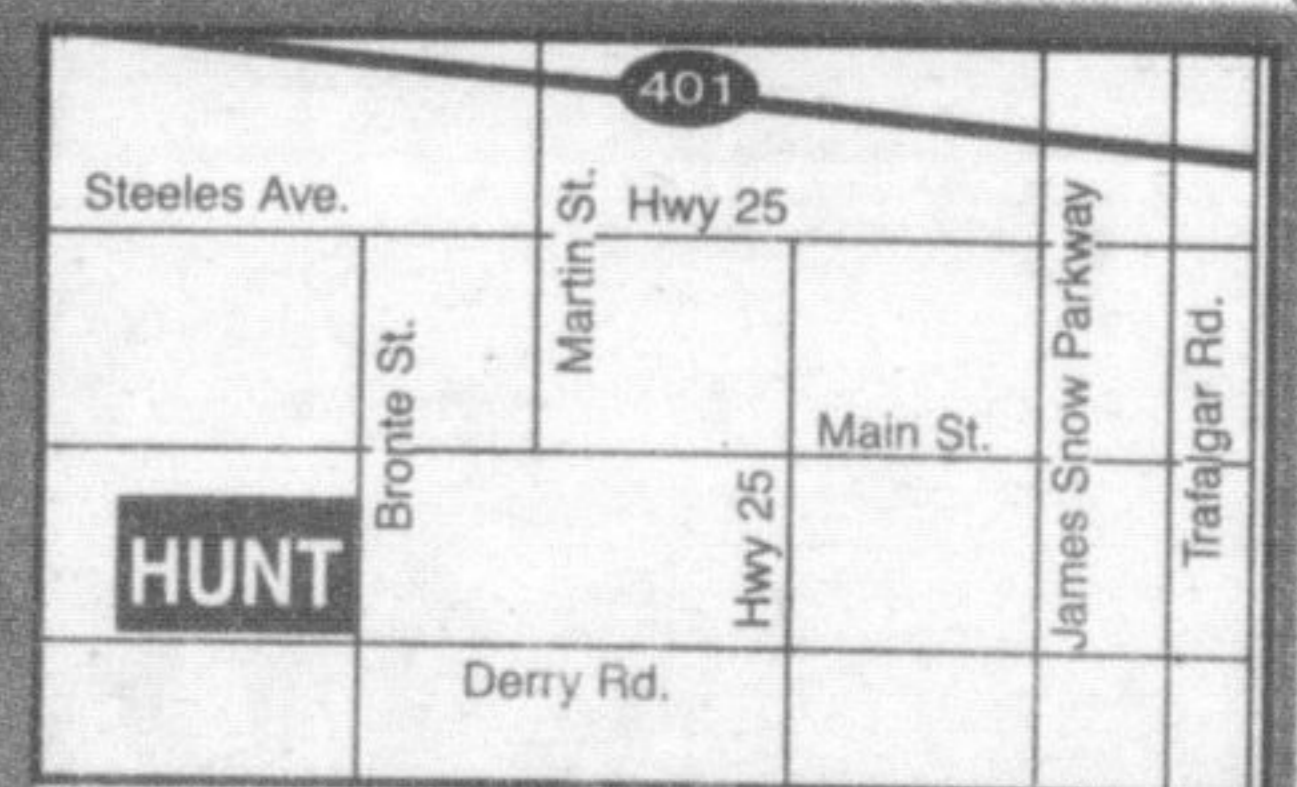
www.huntchrysler.ca

SERVICE/PARTS: www.huntchrysler.com

Milton:
Toll Free:
Email:

(905) 876-2580
1-866-848-8816
sales@huntchrysler.com

SALES: Mon-Thurs 9-9, Fri. 9-6, Sat. 9-5
SERVICE: Mon-Fri 8-5, Tues. 8-8, Sat. 8-12



Wise customers read the fine print. * These are limited time offers which may not be combined with any other offer and apply to retail deliveries of new in-stock 2005 Chrysler Sebring Sedan, PT Cruiser, Dodge Caravan models equipped as described. Prices and total obligations listed exclude freight (\$1200 for Caravan) licence, insurance, applicable taxes, registration, retailer charges and \$50 PPSA. Offers are subject to change without notice. Retailer order/trade may be necessary. Financing and leasing are subject to approval by Chrysler Financial. See retailer for completed details and conditions. † Cash purchase prices apply only to 2005 Chrysler Sebring Sedan (24H), Dodge Caravan (28S), 2005 Chrysler 300 (26H) [300C model shown, MSRP \$42,995], and cannot be combined with purchase financing. † Leases are based on 48 mth terms for 2005 Dodge Caravan (28S) total lease obligation is \$14,547 @0% ALR. Chrysler PT Cruiser (27D): total lease obligation is \$13,488 @ 0.8% ALR. Lease is based on 60 mth term for total lease obligation is \$11,640 @ 0.3% ALR. first month's payment, freight and %50 PPSA are due at lease inception. Kms limited to 81,600 for 48-mth leases and 102,000 for 60-mth leases with a charge of \$.15/km for excess kms. See dealer for details.

FINANCING PROVIDED BY
Chrysler Financial