

**CANADA'S HOTTEST PRODUCTS**

**Hunt**  
Chrysler Jeep



Introducing  
The All New....



**2005 Dodge DAKOTA CLUB CAB**

- 4x2 • V8 • Auto
- STPlus 26C Package

LEASE FOR **\$159/mth** FOR 30 MONTHS WITH \$3995 DOWN

Choose from our four... **POPULAR VEHICLES... ALL PRICED UNDER \$20,000!**

**2005 Dodge CARAVAN**



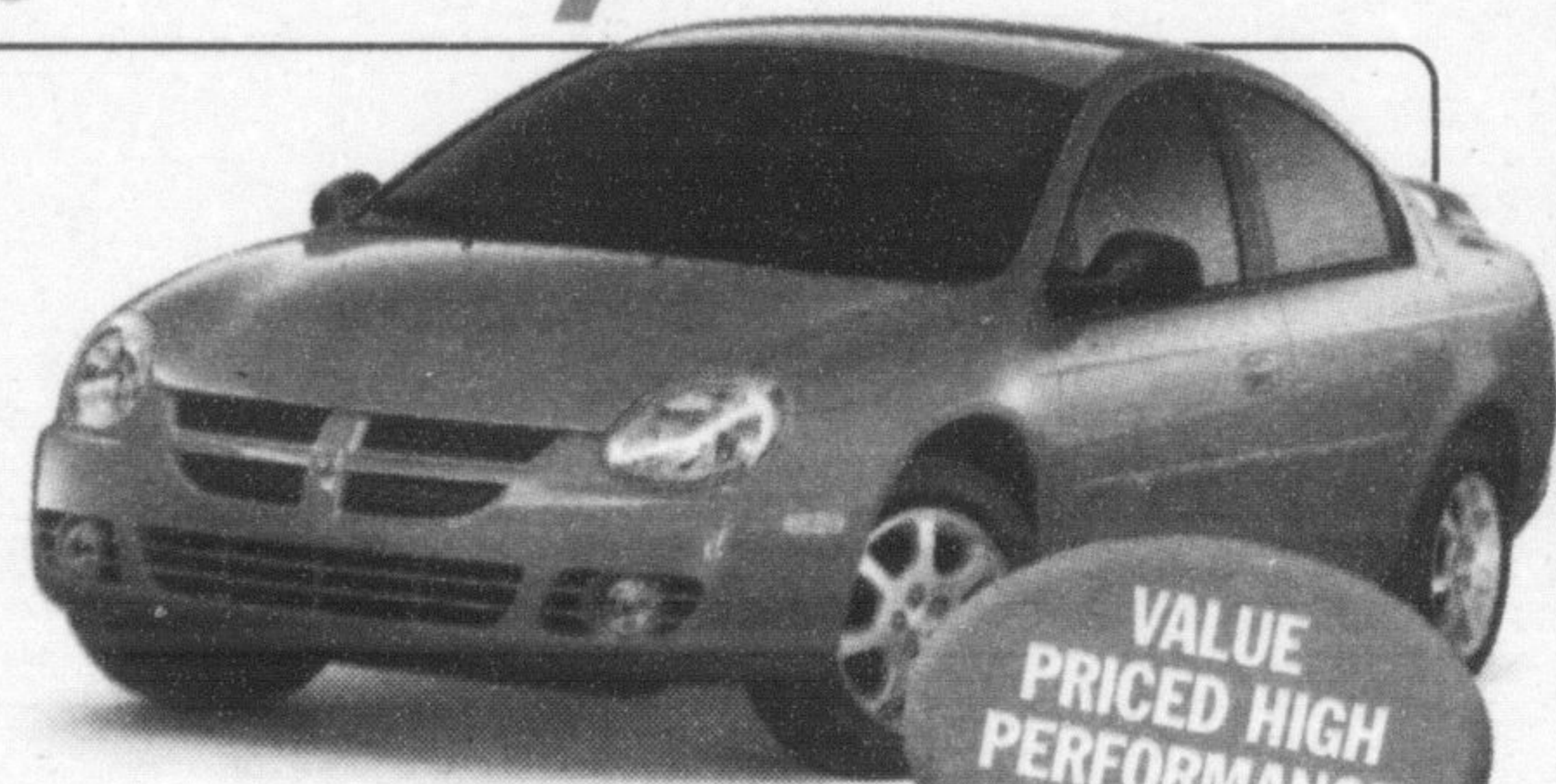
- 3.3L 180hp V6 engine
- Air conditioning • Speed Control
- Coloured keyed fascias
- Power window, locks & mirrors
- AM/FM/CD stereo
- Multistage driver & front passenger air bags
- Sentry-Key™ Engine Immobilizer
- City: 12.2L/100 km (23 mpg)
- Hwy: 8.2L/100 km (34 mpg)

**2005 Dodge CARAVAN SPECIAL EDITION**  
ADDED FEATURES INCLUDE • Power rear quarter vents • Door trim with map pocket • Body-colour liftgate bar • One-touch down power driver window • Unique "Reflex" wheel covers • Deluxe insulation • Tachometer • Body-colour door handles • Special Edition badging

**AN \$880 VALUE!**

LEASE **\$199<sup>†</sup>** PER MTH/48 MTHS \$4,995 DOWN OR EQUIVALENT TRADE \$0 SECURITY DEPOSIT OR CASH PURCHASE **\$19,988\***

**2005 Dodge SX 2.0**



- 132 HP 2.0L SOHC 16V engine
- 5-spd manual transmission
- AM/FM/CD stereo with CD changer controls & six premium speakers
- Fog lamps • Tilt steering
- Sentry-Key™ Engine Immobilizer
- Next-generation driver and front passenger air bags

**VALUE PRICED HIGH PERFORMANCE VEHICLE!**

LEASE **\$199<sup>†</sup>** A MONTH FOR 60 MONTHS WITH 0 DOWN, 0 SECURITY DEPOSIT OR CASH PURCHASE **\$12,988\***

**2005 Chrysler PT CRUISER**



- 2.4L 150 HP DOHC 4 cyl engine
- 5-spd manual transmission
- Fold-and-Tumble™/removable rear seats • Sentry-Key™ engine immobilizer • AM/FM stereo with CD player, CD changer controls and six premium speakers
- Tilt steering • 15" steel wheels with covers/bright lug nut caps
- Next generation driver and front passenger air bags

**FUNCTIONALITY, POWER & STYLE!**

LEASE **\$281<sup>†</sup>** A MONTH FOR 48 MONTHS WITH 0 DOWN, 0 SECURITY DEPOSIT OR CASH PURCHASE **\$15,988\*** FINANCING 60 MTHS **0%**

**2005 Chrysler SEBRING**



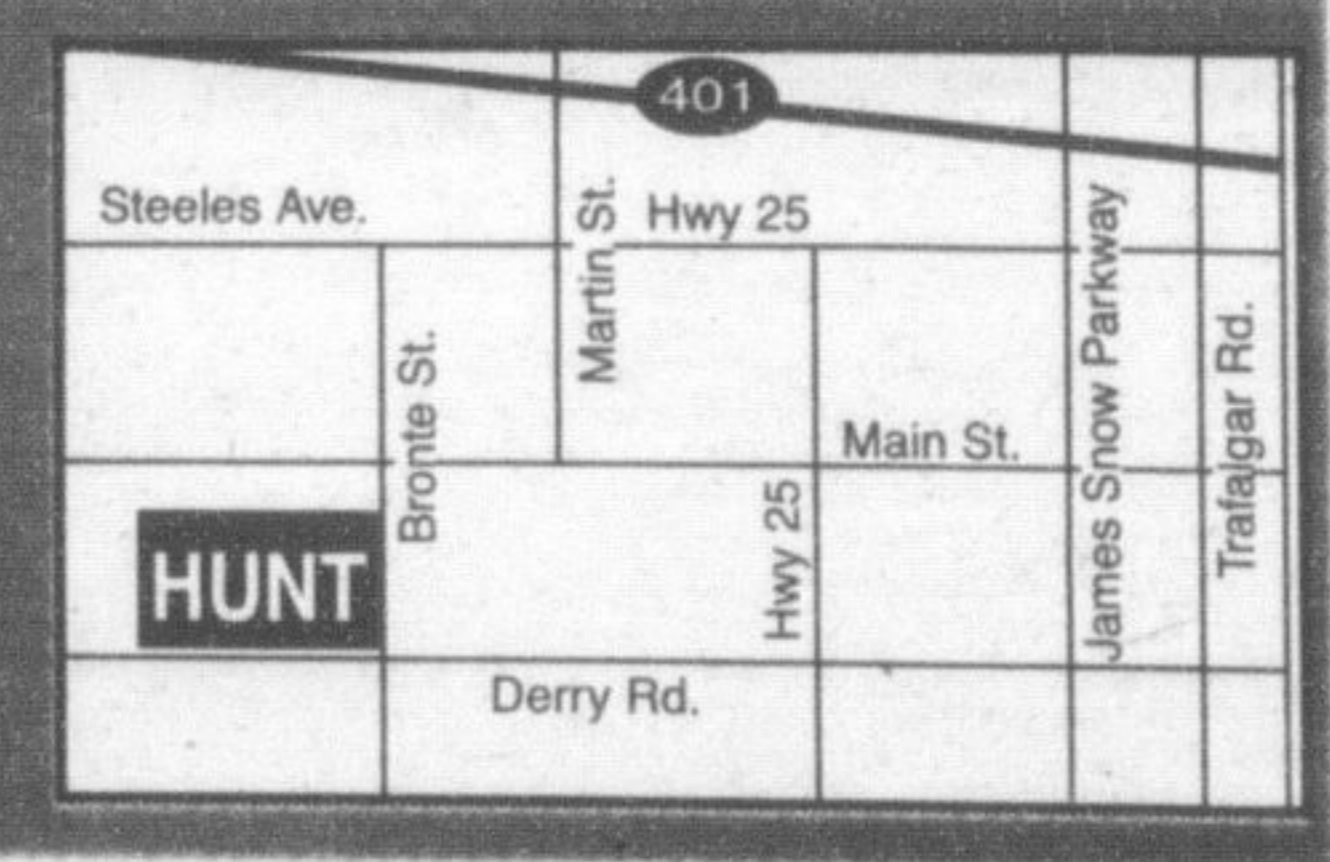
- 3.3L 180 HP V6 engine
- Coloured keyed fascias
- Air conditioning • Speed control
- Power windows, locks and mirrors
- AM/FM/CD stereo • Sentry-Key™ engine immobilizer
- Multistaged driver & front passenger air bags

CASH PURCHASE **\$18,998\***

**Hunt**  
Chrysler Jeep  
FIVE STAR Dealership

**500 BRONTE ST. S.**  
www.huntchrysler.ca SERVICE/PARTS: www.huntchrysler.com

Milton: (905) 876-2580  
Toll Free: 1-866-848-8816  
Email: sales@huntchrysler.com  
SALES: Mon-Thurs 9-9, Fri. 9-6, Sat. 9-5  
SERVICE: Mon-Fri 8-5, Tues. 8-8, Sat. 8-12



Wise customers read the fine print. † These are limited time offers which may not be combined with any other offer and apply to retail deliveries of new in-stock 2005 Chrysler Sebring Sedan, PT Cruiser, Dodge Caravan, SX 2.0 models equipped as described. Prices and total obligations listed exclude freight (\$1200 for Caravan, \$1050 for PT Cruiser, \$1000 for SX 2.0 and Sebring), licence, insurance, applicable taxes, registration, retailer charges and \$50 PPSA. Offers are subject to change without notice. Retailer order/trade may be necessary. Financing and leasing are subject to approval by Chrysler Financial. See retailer for completed details and conditions. \* Cash purchase prices apply only to 2005 Chrysler Sebring Sedan (244), Dodge Caravan (235), PT Cruiser (270), SX 2.0 (210) and cannot be combined with purchase financing. † Leases are based on 48 mth terms for 2005 Dodge Caravan (285 total lease obligation is \$14,547 @ 0% ALR, Chrysler PT Cruiser (270): total lease obligation is \$13,488 @ 0.6% ALR, Lease is based on 60 mth term for 2005 Dodge SX 2.0 (210): total lease obligation is \$11,640 @ 0.3% ALR, first month's payment, freight and %50 PPSA are due at lease inception. Kms limited to 81,600 for 48-mth leases and 102,000 for 60-mth leases with a charge of \$15/km for excess kms. See dealer for details. FINANCING PROVIDED BY Chrysler Financial