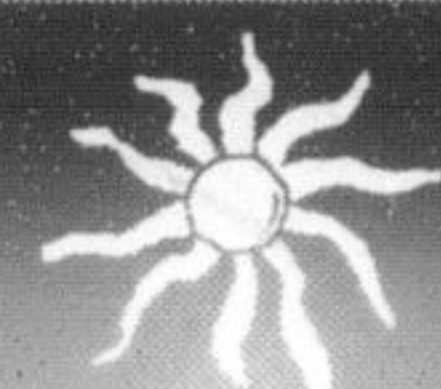
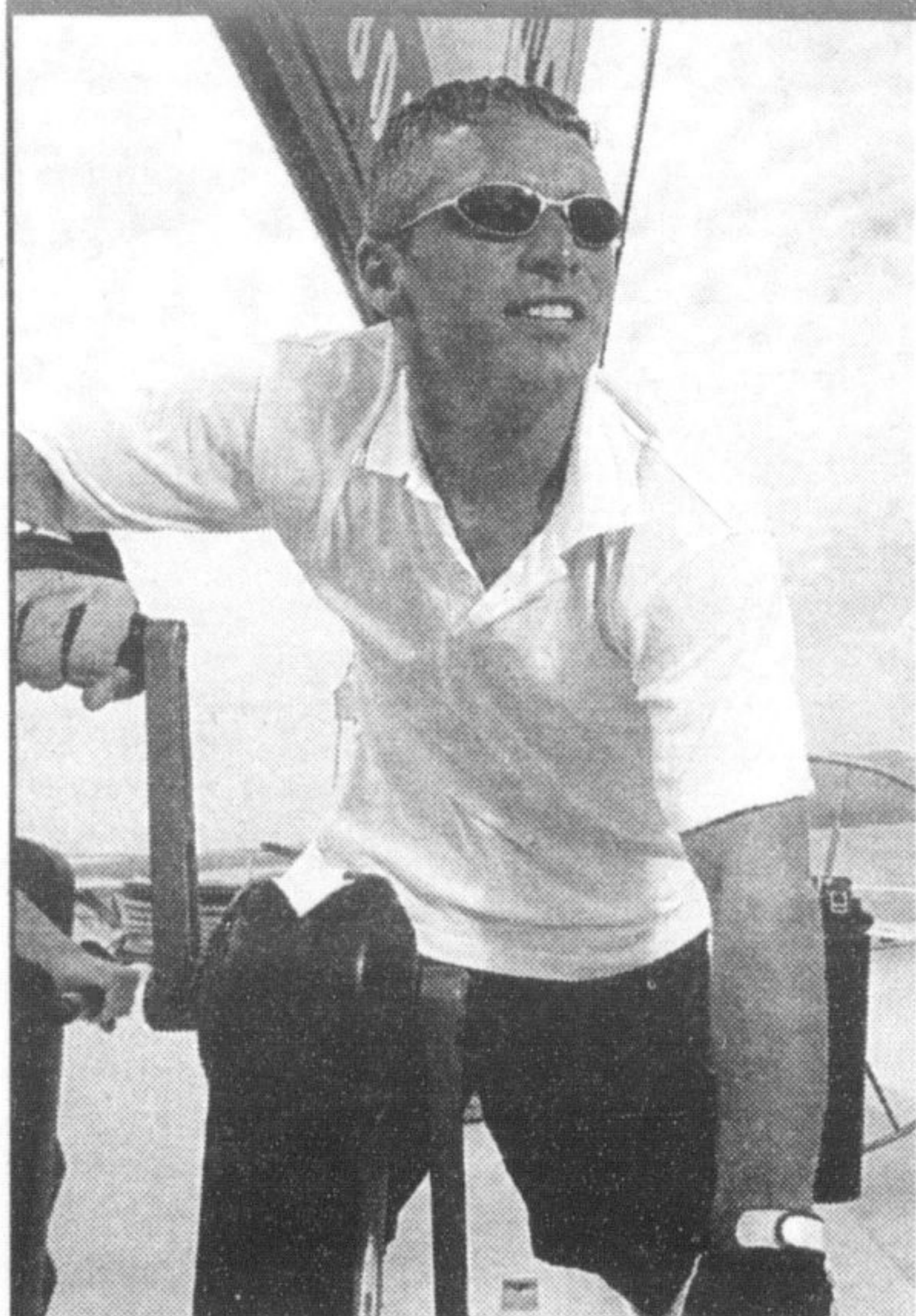
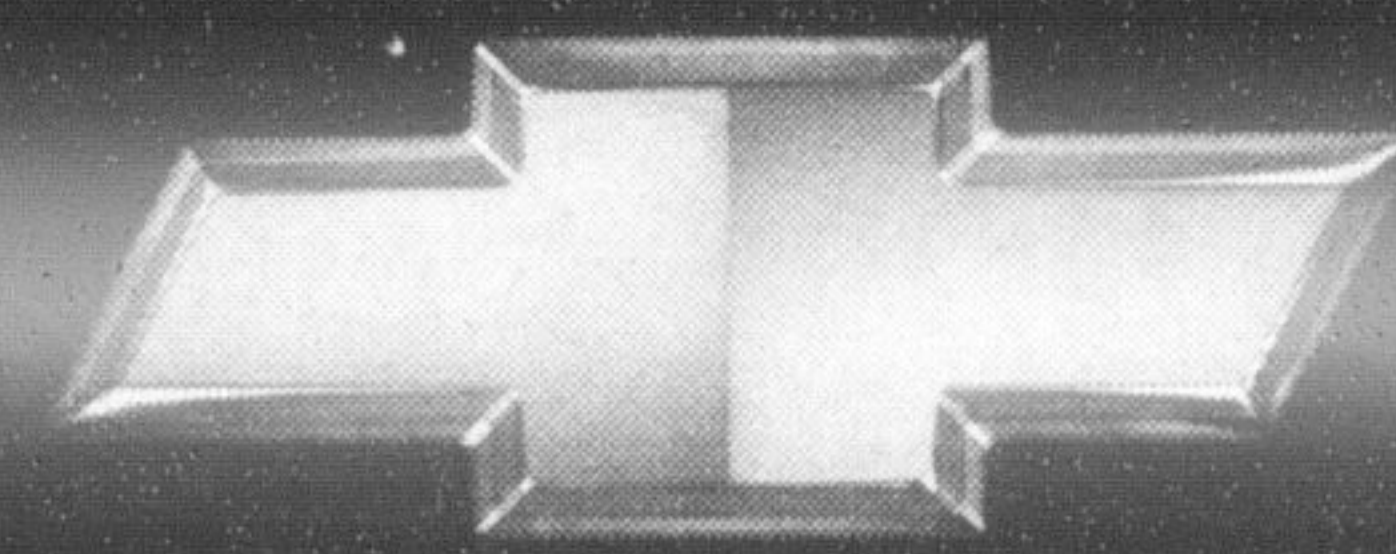


For the latest information, visit us at gmcandada.com, drop by your local Chevrolet Dealer or call us at 1-800-GM-DRIVE. *Based on a 48 month lease for Equinox LS R7C/Equinox LT R7A. Annual kilometre limit 20,000 km, \$0.12 per excess kilometre. A down payment or trade of \$4,150/\$4,150 required. Annual cost of borrowing of 3.9%/3.9% per annum. Option to purchase at lease end is \$13,361/\$14,600, plus applicable taxes. Other lease options are available. Dealers are free to set individual prices. Freight (\$995/\$995), license, insurance, registration, PPSA, administration fees and taxes not included. Offer applies to the lease of 2005 new or demonstrator models, and applies only to qualified retail customers in the Ontario Chevrolet Dealer Marketing Association area only (including Outaouais and excluding Northwestern Ontario). Dealer order or trade may not be combined with other offers. See your dealer for conditions and details. †Based on available competitive brochure information for the Ford Escape XLS, Honda CR-V LX and Toyota RAV4 Base. †J.D. Power and Associates 2004 U.S. Automotive Performance, Execution and Layout (APEAL) StudySM. Study based on 102,951 U.S. consumer responses. www.jdpower.com. †U.S. Government star ratings are part of the National Highway Traffic Safety Administration's (NHTSA's) New Car Assessment Program (NCAP). For more information on safety ratings, go to www.safercar.gov. †Registered trademark of General Motors Corporation. TD Canada Trust licensed user of mark. †Trade-mark of The Toronto-Dominion Bank. †Based on a 48 month lease for Equinox LS R7C/Equinox LT R7A. Annual kilometre limit 20,000 km, \$0.12 per excess kilometre. A down payment or trade of \$4,150/\$4,150 required. Annual cost of borrowing of 3.9%/3.9% per annum. Option to purchase at lease end is \$13,361/\$14,600, plus applicable taxes. Other lease options are available. Dealers are free to set individual prices. Freight (\$995/\$995), license, insurance, registration, PPSA, administration fees and taxes not included. Offer applies to the lease of 2005 new or demonstrator models, and applies only to qualified retail customers in the Ontario Chevrolet Dealer Marketing Association area only (including Outaouais and excluding Northwestern Ontario). Dealer order or trade may not be combined with other offers. See your dealer for conditions and details. †Based on available competitive brochure information for the Ford Escape XLS, Honda CR-V LX and Toyota RAV4 Base. †J.D. Power and Associates 2004 U.S. Automotive Performance, Execution and Layout (APEAL) StudySM. Study based on 102,951 U.S. consumer responses. www.jdpower.com. †U.S. Government star ratings are part of the National Highway Traffic Safety Administration's (NHTSA's) New Car Assessment Program (NCAP). For more information on safety ratings, go to www.safercar.gov. †Registered trademark of General Motors Corporation. TD Canada Trust licensed user of mark. †Trade-mark of The Toronto-Dominion Bank.

2005 CHEVROLET EQUINOX



THINK SPRING.
GET INTO
THE EQUINOX.



SET YOUR SIGHTS HIGHER.

"No one matches the Equinox's overall comfort, convenience and versatility." *Jeremy Cato, Globe & Mail*

STANDARD
AIR, AUTO AND
V6
POWER



Equinox LT with 17" wheels shown

\$265* SMARTLEASE
PER MONTH
WITH \$4,150 DOWN

Equinox LS (R7C)

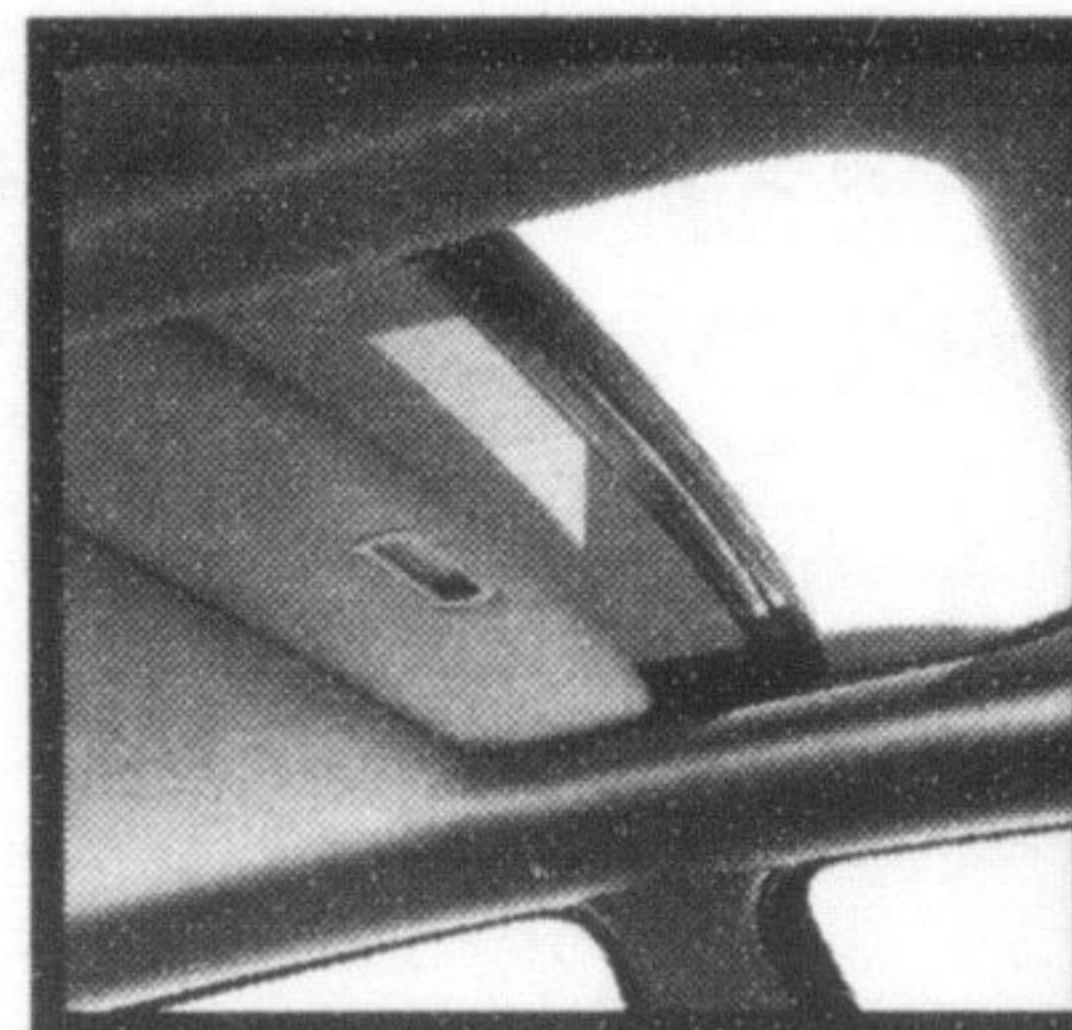
- 3.4L 185 HP SFI V6 Engine • 5-Speed Automatic
- Air Conditioning • CD Stereo • Power Locks/Windows/Mirrors
- 16" Aluminum Wheels • Cruise Control
- Multi-Flex™ Rear Seating – 60/40 Split Folding, Reclining and Sliding Bench (with 8" of Travel)
- Fold-Flat Front Passenger Seat
- Multi-Level Cargo Area with Removable Panels

★★★★★
**HIGHEST GOVERNMENT
SAFETY RATING**

The Chevrolet Equinox received a 5-Star rating for the driver and front passenger in the frontal crash test and for front and rear seat occupants in the side-impact crash test.†



Most Appealing Entry Sport Utility Vehicle in the U.S.†



LEASE THE EQUINOX LT (R7A) AND GET A SUNROOF, AM/FM STEREO WITH 6 DISC CD PLAYER AND PREMIUM 7 SPEAKER SOUND SYSTEM AND MORE FOR **\$20 MORE PER MONTH***

HOW EQUINOX STACKS UP

FEATURES	CHEVROLET EQUINOX LS	FORD ESCAPE XLS	HONDA CR-V LX	TOYOTA RAV4 BASE	
SAFETY	NHTSA Safety Rating Frontal, Driver and Passenger†	★★★★	★★★★	★★★★ (with SAB)	★★★★
	NHTSA Safety Rating Side, Driver and Passenger†	★★★★	★★★★	★★★★ (with SAB)	★★★★
PERFORMANCE	Fog Lamps	Yes	No	No	No
	Engine HP	3.4L 185 HP V6	2.3L 153 HP I4	2.4L 160 HP I4	2.4L 161 HP I4
	Transmission	5-Speed Automatic	5-Speed Manual	5-Speed Manual	5-Speed Manual
	Wheels	16"	15"	16"	16"
COMFORT AND CONVENIENCE	Remote Keyless Entry	Yes	Yes	Yes	No
	Air Conditioning	Yes	No	Yes	No
	Rear Legroom	40.2"	36.3"	39.4"	32.6"
SPACE AND CAPABILITY	Cargo Volume	35.2 cu. ft.	29.3 cu. ft.	33.5 cu. ft.	23.9 cu. ft.
	Roof Rails	Yes	Yes	No	No
	Trailer towing (when properly equipped)	1500 kg (3500 lbs)	680 kg (1500 lbs)	680 kg (1500 lbs)	680 kg (1500 lbs)

†Based on available competitive print brochures.

CHECK OUT EQUINOX TODAY AT YOUR ONTARIO CHEVROLET DEALER.

