  
CHEVY TRUCKS

# ROCK THE NATION | EVENT



 **SILVERADO**  
SPECIAL EDITION

**GET A \$1000 BONUS**  
WITH THE PURCHASE OR LEASE OF THE  
**SILVERADO SPECIAL EDITION CREW.**

**Enjoy the standards...**

Vortec 5300 295 HP V8 Engine • 4-Speed Automatic Transmission with Overdrive and Tow-Haul Mode • Full Crew Cab with 5'8" Box • Autotrac Automatic 4WD • 4-Wheel ABS • Locking Differential • Dual Zone Air Conditioning • Tilt, Cruise, Power Windows, Power Locks with Keyless Remote, Power Mirrors • Rear Defroster • AM/FM CD Stereo • Electrochromic Rearview Mirror

**PLUS THE SILVERADO SPECIAL EDITION CREW GETS YOU...**  
17-Inch 6-Spoke Aluminum Wheels • Deep Tinted Glass  
• Fog Lights • Chrome Tubular Side Steps • Z71 Off-Road Suspension Package • Trailing Special Equipment Package

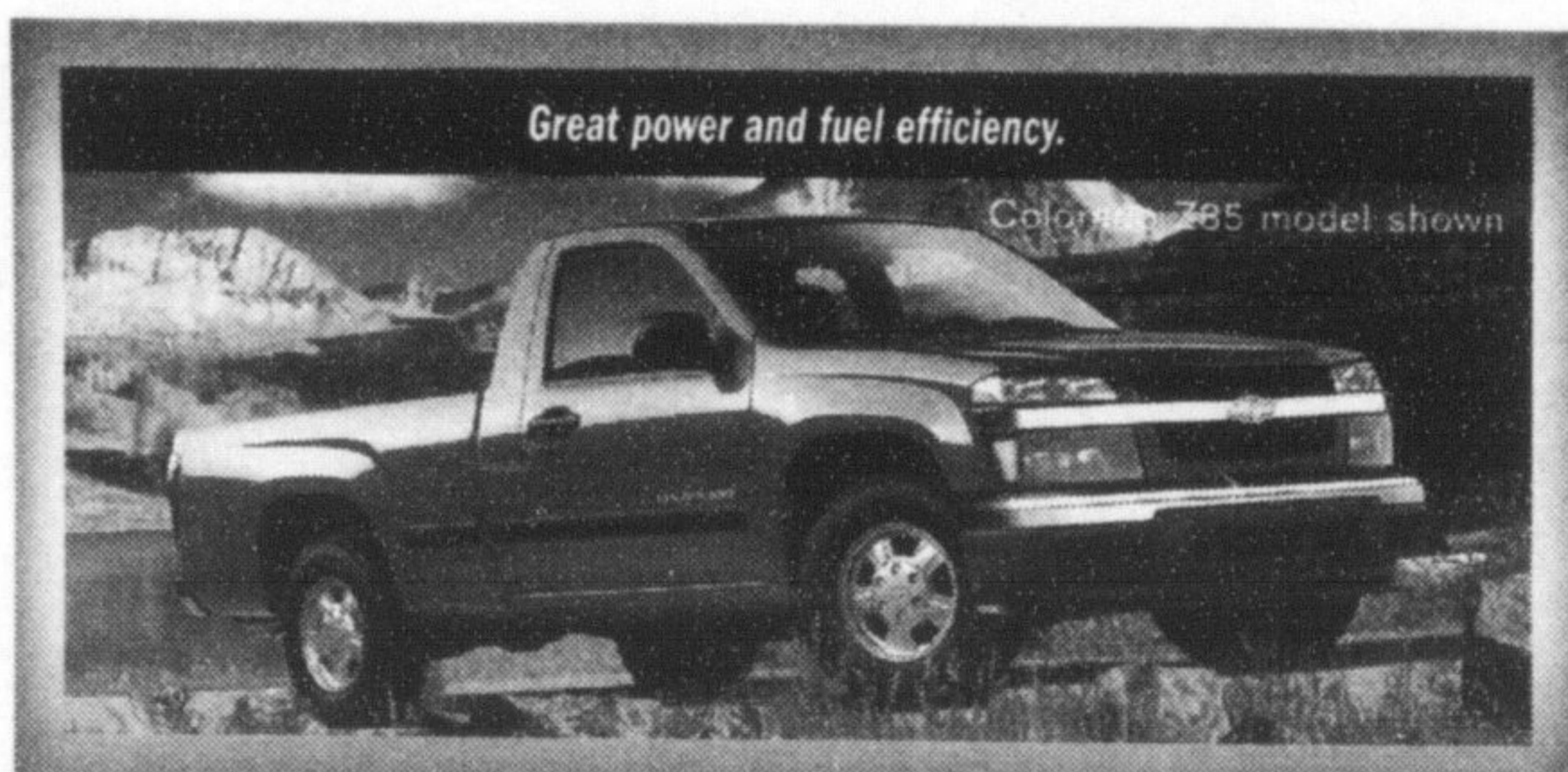
<p>SMARTLEASE</p> <p><b>\$358</b>*/MO</p> <p>WITH \$3,420 DOWN PAYMENT INCLUDES \$1000 BONUS**</p>	<p>OR</p> <p><b>0%</b>†</p> <p>PURCHASE FINANCING</p>	<p>Down Payment</p> <p>\$0</p>	<p>Lease Payment</p> <p>\$459</p>
		<p>\$1,500</p>	<p>\$415</p>
		<p>\$3,000</p>	<p>\$371</p>

**SILVERADO STACKS UP.**

Feature	Chevy	Ford	Dodge
Model	Silverado LS 1500 Crew Cab	F150 XLT Super Crew	Ram SLT 1500 Quad Cab
Standard Engine	Vortec 5300 V8	Triton 4.6L V8	4.7L Magnum V8
HP	295	231	235
Torque	335	293	300
Fuel Economy: L/100 km	City/Hwy. 15.8/11.6	City/Hwy. 17.3/12.4	City/Hwy. 17.2/12.1
MPG	(18/24)	(16/23)	(16/23)
Max Towing	3810 kg. (8400 lb.)	2948 kg. (6500 lb.)	3243 kg. (7150 lb.)
Autotrac-Automatic 4WD	STD.	N/A	N/A
Locking Rear Differential	STD.	N/A	N/A
Dual Zone Air Conditioning	STD.	DUAL N/A	DUAL N/A

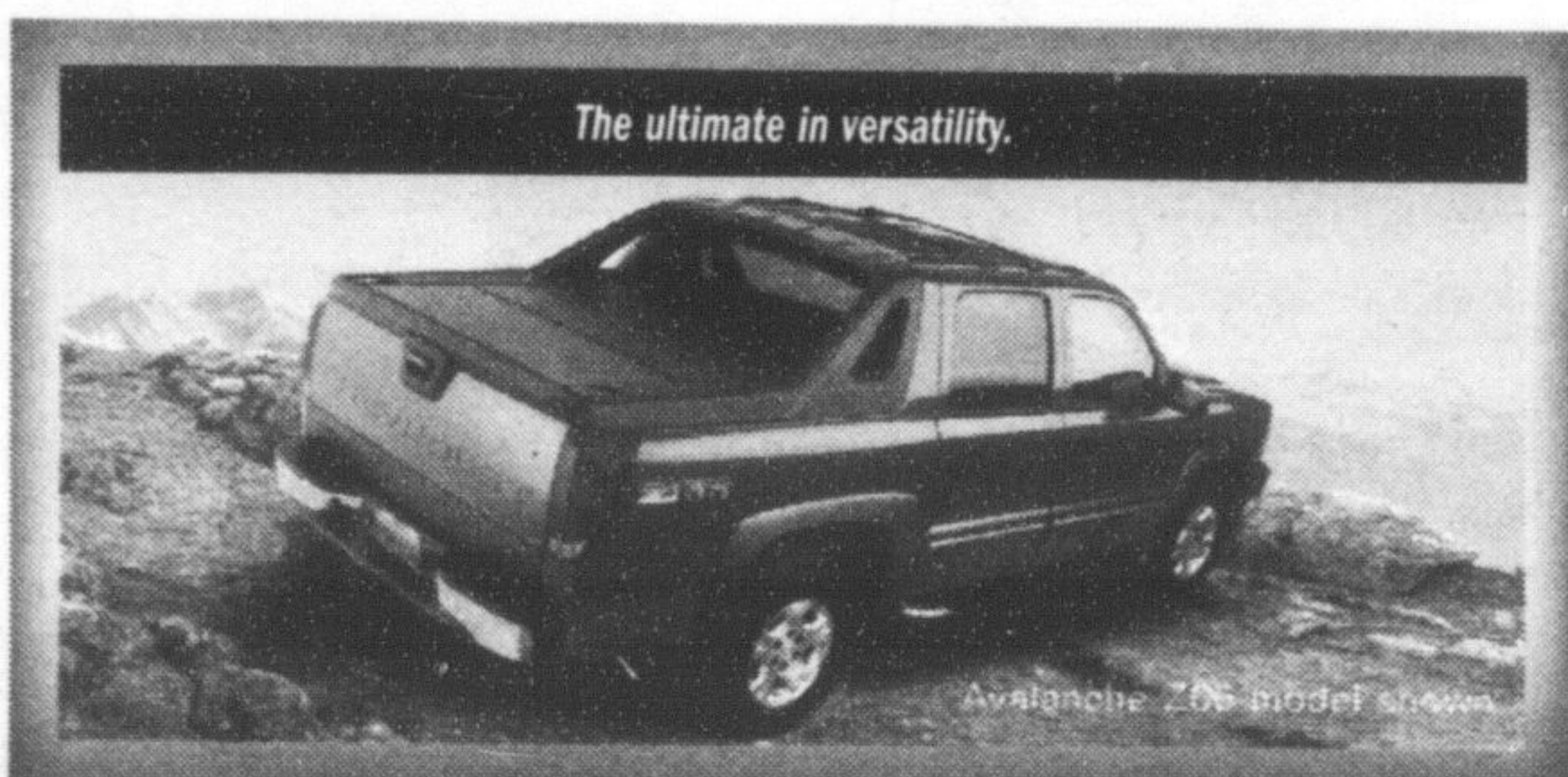
\*Based on available competitive brochure information.

**CHEVY SILVERADO 1500 CREW HAS MORE STANDARD HORSEPOWER, TORQUE AND TOWING CAPACITY THAN FORD OR DODGE 1/2 TON CREWS!**



Great power and fuel efficiency.

Colorado 2.8 model shown



The ultimate in versatility.

Avalanche 2.8 model shown

 **COLORADO**

- Standard Features include: Vortec 2800 175 HP Engine  
• 5-Speed Manual Transmission with Overdrive • 4-Wheel ABS  
• PassLock™ Security System • 60/40 Split Bench Seat  
• 15" Steel Wheels

STARTING FROM  
**\$18,615\*** AND **0%**† PURCHASE FINANCING

 **AVALANCHE**

- Avalanche R7A • Vortec 5300 295 HP V8 Engine • 4-Speed Automatic Transmission with Overdrive and Tow/Haul Mode  
• Autotrac Automatic 4WD • Dual Zone Air Conditioning • Industry-Exclusive Convert-A-Cab™ System with Folding Midgate™ • 3-Piece Removable Rigid Cargo Cover • Removable Rear Window  
• Chromed Stainless Steel Tubular Side Steps • Trailing Special Equipment Package • Inside Rear View Mirror with Compass

SMARTLEASE  
**\$391**\*/MO OR **0%**† PURCHASE FINANCING  
WITH \$3,420 DOWN PAYMENT



For the latest information, visit us at [gmcanada.com](http://gmcanada.com), drop by your local Chevrolet Dealer or call us at 1-800-GM-DRIVE. \*Based on a 36 month lease. A down payment or trade of \$3,420/\$3,420 (2005 Silverado Crew Cab 4WD R7A/2005 Avalanche 1500 4WD R7A) is required. Annual cost of borrowing of 4.4%/2.9% per annum. Option to purchase at lease end is \$26,542/\$27,565 plus applicable taxes. Annual kilometre limit of 20,000 km, \$0.12 per excess kilometre. Other lease options available. \*\*\$1,000 credit is exclusive of applicable taxes and is reflected in offers in this advertisement. †Based on starting from price of 2005 Colorado Base Regular Cab 2WD. ‡0% purchase financing on approved GMAC credit only. Term up to 48/36/48 months available. Down payment, trade and/or security deposit may be required. Monthly payment and cost of borrowing will vary depending on amount borrowed and down payment/trade. Example: \$10,000 at 0% APR, the monthly payment is \$208.33/\$277.78 for 48/36 months. Cost of borrowing is \$0 total obligation is \$10,000. \*†\*\*Freight (\$1,100/\$995/\$1,100) licence, insurance, registration, PPSA, administration fees and taxes not included. Offers apply as indicated. Dealer order or trade may be required. Limited quantities of Silverado Special Edition models available. Offers apply to qualified retail customers in the Ontario Chevrolet Dealer Marketing Association area only (including Outaouais and excluding Northwestern Ontario). Dealers are free to set individual prices. Limited time offers which may not be combined with other offers. See your dealer for conditions and details. ††Based on available competitive information for the Ford F-150 XLT with Triton 4.6L V8 and Dodge Ram SLT with 4.7L Magnum V8 and Natural Resources Canada Fuel Consumption Guide Ratings. ©Registered trademark of General Motors Corporation. TD Canada Trust licensed user of mark. Visa International Service Association/TD Canada Trust and GM licensed user of marks. ©Trade-mark of The Toronto-Dominion Bank.