


FIRST AID Canadian Red Cross

People who take first aid training reduce their personal injuries by up to 30%.



Plenty of March Break activities to keep kids busy

"I'm bored." What parent doesn't dread hearing that phrase, especially over the March Break?

In Milton, there's lots going on over the break for parents and their children, and

many of the activities are free. Read on for some suggestions to the age-old dilemma of how to keep your energetic kids busy. They might even learn something — but you might want to keep that part a secret.

Conservation Halton

Conservation Halton's parks are offering plenty of March Break activities.

Sunday, Crawford Lake's annual

Sweetwater Day Celebration will take place from 10 a.m. to 4 p.m. There'll be activities for the kids, hands-on maple syrup-making demonstrations, longhouse lore and more.

The maple syrup celebrations will continue throughout the week at Crawford Lake, with its Sweetwater Season event, which will run Monday to March 18 from 10 a.m. to 4 p.m. Participants will be able to watch Native-style maple demonstrations in the reconstructed Iroquoian Village. There'll also be plenty of corn-bread dripping with fresh maple syrup, a seasonal discovery hunt and crafts.

From Monday to March 18 at Mountsberg, families will be able to take part in its MapleTowns program from 10 a.m. to 4 p.m. daily. This'll include horse-drawn sleigh rides and demonstrations at the sugar bush evaporator and candy-making house. The pancake pavilion will cater to families' taste buds, and maple syrup will be on sale. Birds of Prey demonstrations will take place throughout the day, and kids will also be able to visit the PlayBarn.

Glen Eden Ski and Snowboard Centre will be offering extended hours at its tube park. From Monday to March 19, the tube run will be open from 10 a.m. to 9 p.m. Be sure to visit Glen Eden's Web site for snow conditions before leaving home.

Kids interested in Glen Eden's Adventure Camp Packages can visit its Web site for lesson availability and prices. The packages include lessons with professional instructors.

For more information on any of these activities, including park directions, visit www.conservationhalton.on.ca or call (905) 336-1158. To find out more about Glen Eden and its Adventure Camp, visit www.gleneden.on.ca or call (905) 878-5011.

Milton Mall

Milton Mall has an activity for each day of the March Break.

Saturday, Milton Public Library will hold its Family Storytime at the mall starting at 10:30 a.m. to kick off the week.

Monday and next Tuesday at 11 a.m. and 1 p.m., it will stage princess shows with the beautiful Belle appearing Monday and Cinderella Tuesday. The princesses will sing songs from their movies and invite audience members to sing and dance along with them on stage.

Also next Tuesday, from 10:30 a.m. to noon, the Ontario Early Years Centre will hold its Pre-school Drop-In and Parenting Information program near the food court.

On March 16 at 11 a.m., local author and

• see MILTON on page 5

GALLINGER Ford LINCOLN

Value and Trust since 1967



2005 FOCUS ZX5 SES

2.0L DOHC Engine, automatic trans-axle, A/C, P/W, P/L, Tachometer, Speed control and tilt, fog lamps, heated seats, sport wheels, silver ext, MSRP \$23,925; Stk# A5062

RED CARPET LEASE /36 MTHS

\$278 *\$0 DOWN

OR

CASH PRICE

\$17,993



2005 F-150 4X4 SUPERCAB XLT

5.4L V8, Auto O/D, A/C, P/W, P/L, Speed control and tilt, 7200 GVWR pkg, trailer tow pkg, tubular running boards, electric shift 4 X 4, Alum Wheels, two tone paint, Oxford white and beige ext, MSRP \$42,415; Stk# F5063

RED CARPET LEASE /36 MTHS

\$415 *\$1000 DOWN

OR

CASH PRICE

\$35,904

ADVANTAGES OF



PURCHASE PLANS

"SHORT TERM"

RED CARPET LEASE

- Enjoy driving a new vehicle every couple of years.
- Ford guarantees the buy back price.
- Minimize financial commitment.

- "A" - Current Employee
- "Z" - Retired Employee
- "X" - Friends & Neighbours

Always Welcome!

2004 FREESTYLE SPORT WAGON



CASH PRICE

\$24,631

4.2L V6, Auto O/D, A/C, P/W, P/L, Speed control and tilt, adjustable foot pedals, quad captains chairs, privacy glass, sport wheels, Vibrant white ext, MSRP \$35,420; Stg# W4002

2004 LINCOLN NAVIGATOR ULTIMATE



CASH PRICE

\$64,999

5.4L V8, Auto O/D, A/C, P/W, P/L, Speed control and tilt, Leather trim, power lift gate, power fold down third seat, Advance Trac, power running boards, power moon roof, Navigation system, chrome wheels, LOADED!!!, black ext, MSRP \$80,610; Stg#0726

*All prices plus freight + all applicable taxes. No Admin Fee. RCL - 36 months, 20,000 kms per year. No security deposit with purchase of Wear Care. Limited time offer. See dealer for details. Rebates included. MSRP for reference only.

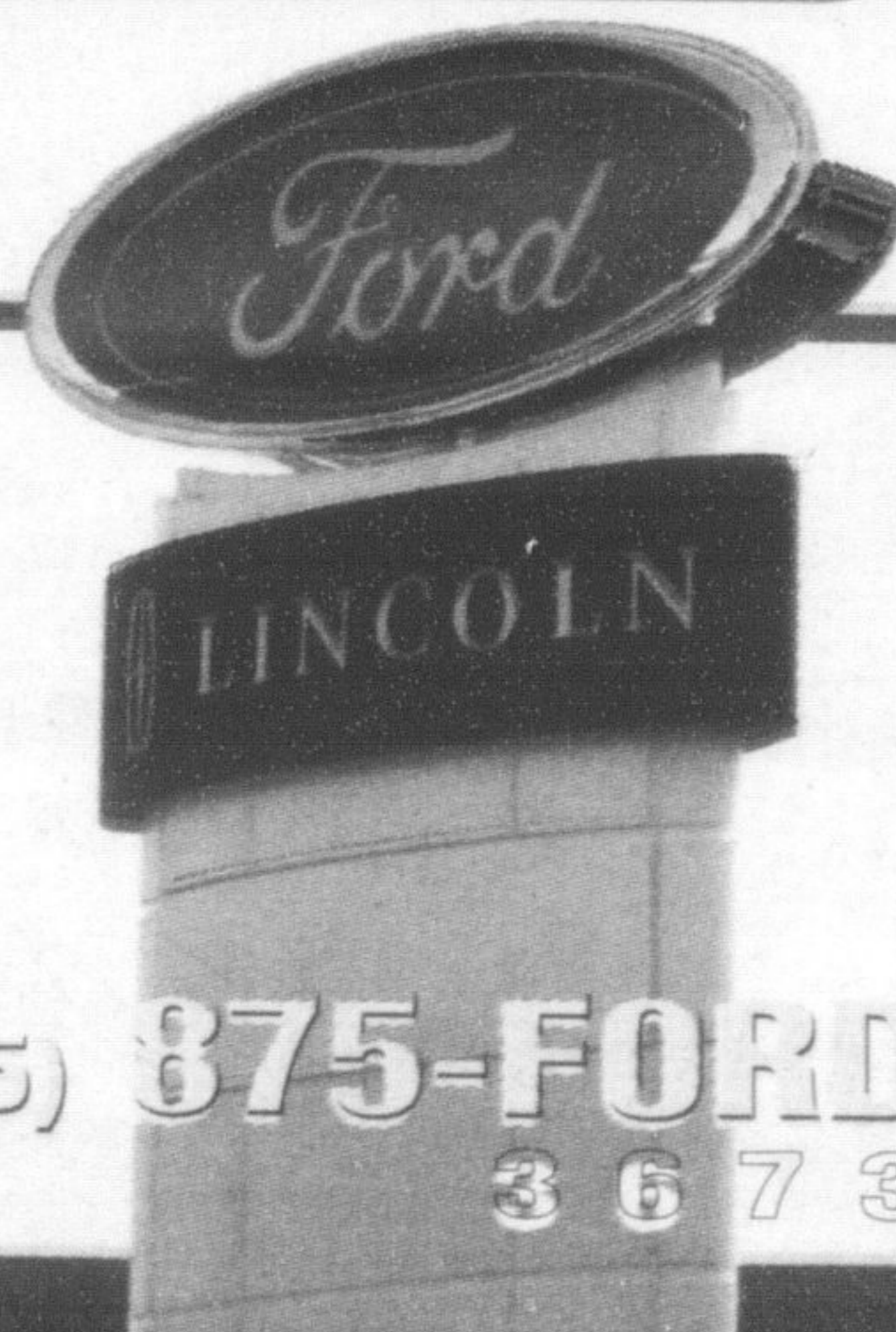
GALLINGER FORD LINCOLN

655 MAIN STREET EAST. MILTON

www.gallingerford.com

A Tradition of Value & Trust since 1967

SALES • LEASING • SERVICE • PARTS • COLLISION CENTRE



(905) 875-FORD 3673

HUGE PIANO SALE LIVING ARTS CENTRE

4141 Living Arts Dr., Mississauga

March 11, 12 & 13

Fri. 12-9pm Sat. 10-6pm Sun. 10-5pm

- 10 Year Warranty
- Free first tuning
- Free bench
- Free delivery



Financing Available. O.A.C.

New and Used Pianos & Digitals including: Niemeyer, Kawai, Samick, Yamaha, Young Chang.

For Info Call or Visit: www.pianos.ca

1-800-281-7172