



Photos by PETER C. McCUSKER

Long-standing service honoured

Above, Halton Region Police Service's (from left) Sgt. Steve Carroll and Sgt. Gary Pokoradi of Milton's 12 Division and District One (Milton and Halton Hills) Operations Inspector Ron Welsh receive 30-year Police Exemplary Service Medals Thursday evening at the Burlington Convention Centre. At left, Const. Charles Gardner of Milton receives his 35-year medal.

Murder suspects back in court February 24

Two men charged with first-degree murder in connection with the slaying of a Milton resident will appear in Burlington court via video February 24 to be spoken to.

This was decided at their video appearance last month at Ontario Court of Justice in Burlington.

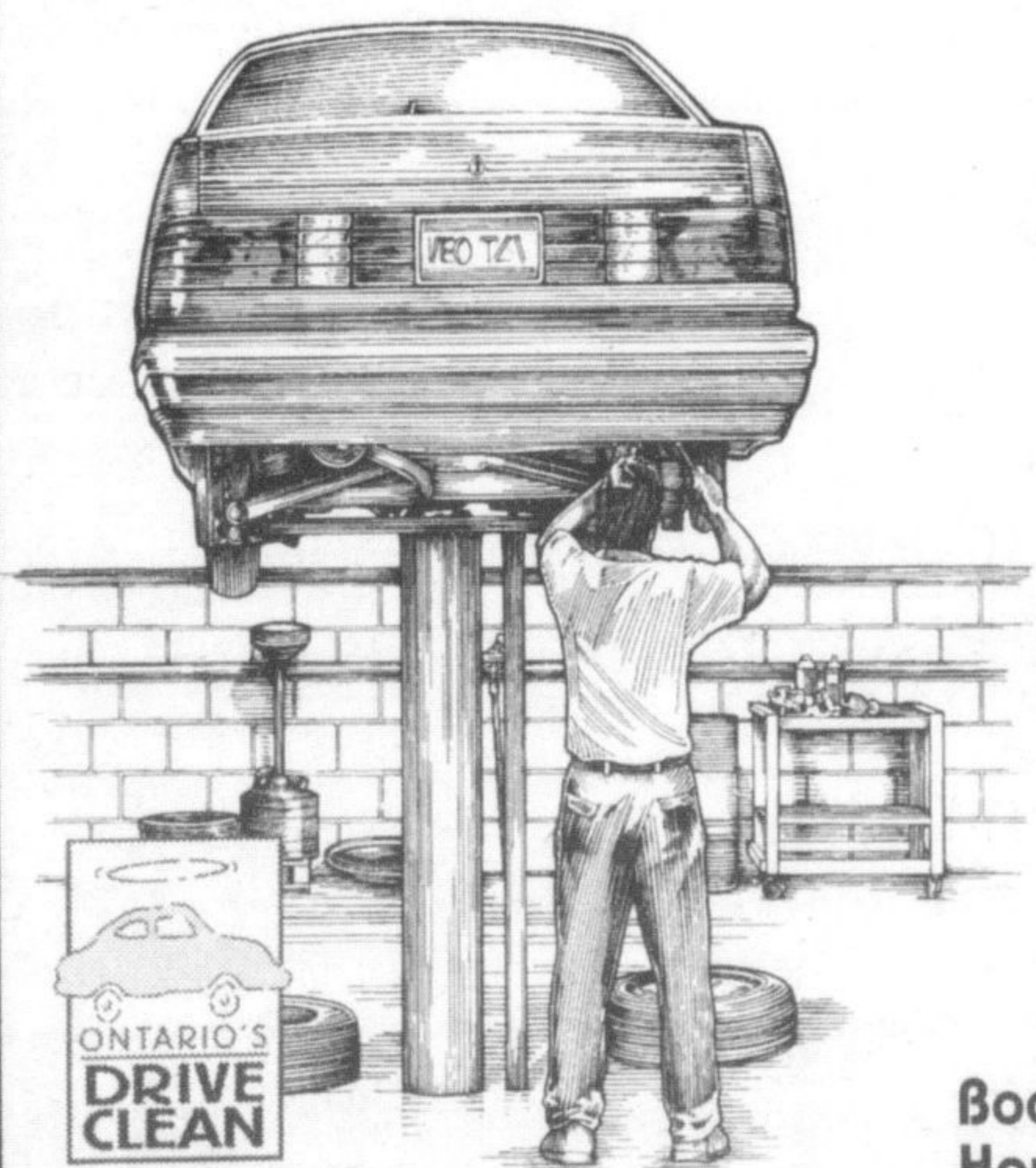
Brian Stockton, 48, was found dead in a

flaming car June 17 behind Traffix transport company on Regional Road 25, north of Hwy. 401.

Halton Hills resident Michael James McDonough, 39, and Mississauga's John Kevin McClatchey, 47, were charged with first-degree murder in June of last year. They were arrested the day after the murder at their homes.

WINTER IS HERE...

TUNE UP & WINTERIZE All Makes & Models



- Brake Service
- Steering & Suspension
- MOT Safety Inspection
- Computer Diagnostics
- Tires
- Air Conditioning Service
- Auto Electric and Charging Systems
- General Repairs

Book your service appointment today!
Hours: Mon-Fri 8:00-5:30 pm
Sat 9:00-12:00 noon

K&B AUTO SERVICE

715 Main Street E. Milton 876-3148



KEVIN BLACKLOCK

Drive Away Today In Your New RICHARDSON CHEVROLET



RICHARDSON CHEVROLET

is proud to announce the appointment of PAUL AMENDOLA as Used Car Manager. Paul brings with him, over 30 years experience in the car industry.

ATTENTION All Smart Lease Customers

If your current lease matures between Feb. 1st & Oct 31, '05, GM will absorb up to 3 of your remaining payments with the purchase or lease of a new vehicle through GMAC.

SEE DEALER FOR COMPLETE DETAILS. OFFER ENDS MARCH 31, 2005.

0% FINANCING AVAILABLE

up to 36 months on Virtually all 2005 Models. O.A.C. & up to 72 months on 2005 Cavalier. O.A.C.

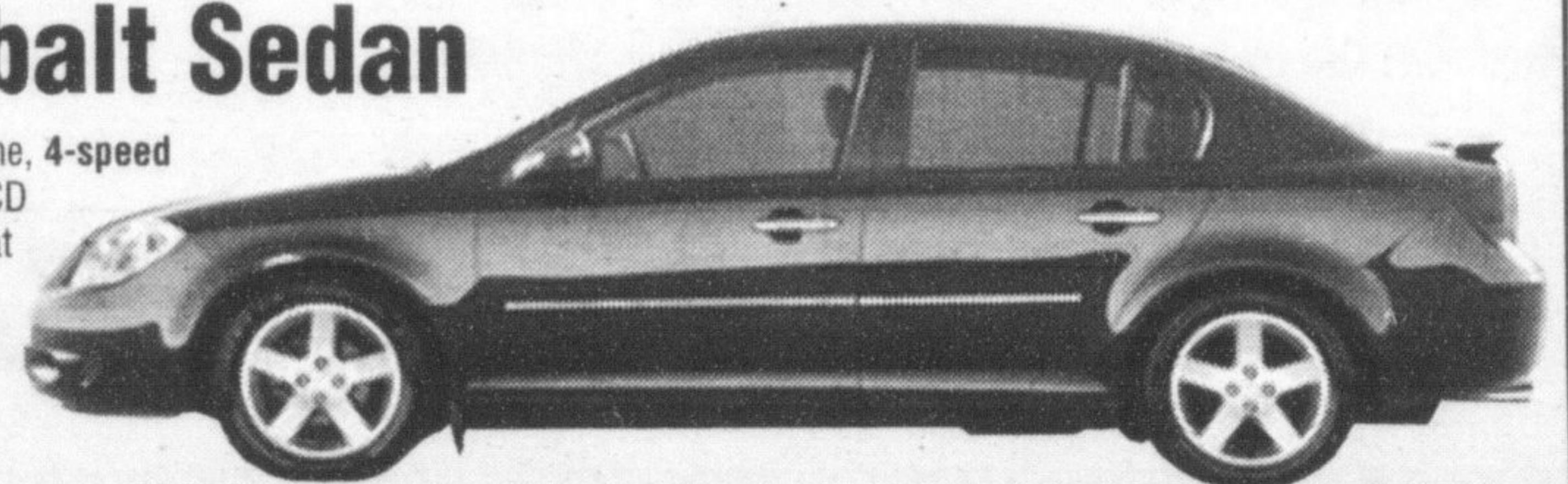
CHEVROLET 2005 Cobalt Sedan

2.2 L ECOTEC dual overhead cam 4-cylinder engine, 4-speed automatic, air conditioning, AM/FM stereo with CD player, 15" wheels, tilt steering column, driver seat height adjuster, front driver and right passenger dual-stage air bags, & much more.

SMART LEASE \$189*

Per mth/48 mths. \$2,260 Down Payment. \$950 Freight, \$0 Security Deposit.

DOWN	MONTHLY	TOTAL DUE @ SIGN
\$0	\$239	\$1,453
\$1,500	\$206	\$3,141
\$3,000	\$173	\$4,828



PURCHASE FINANCING 0%

Up to 36 months

PURCHASE CASH PRICE \$17,995*

Excludes Freight & Taxes.

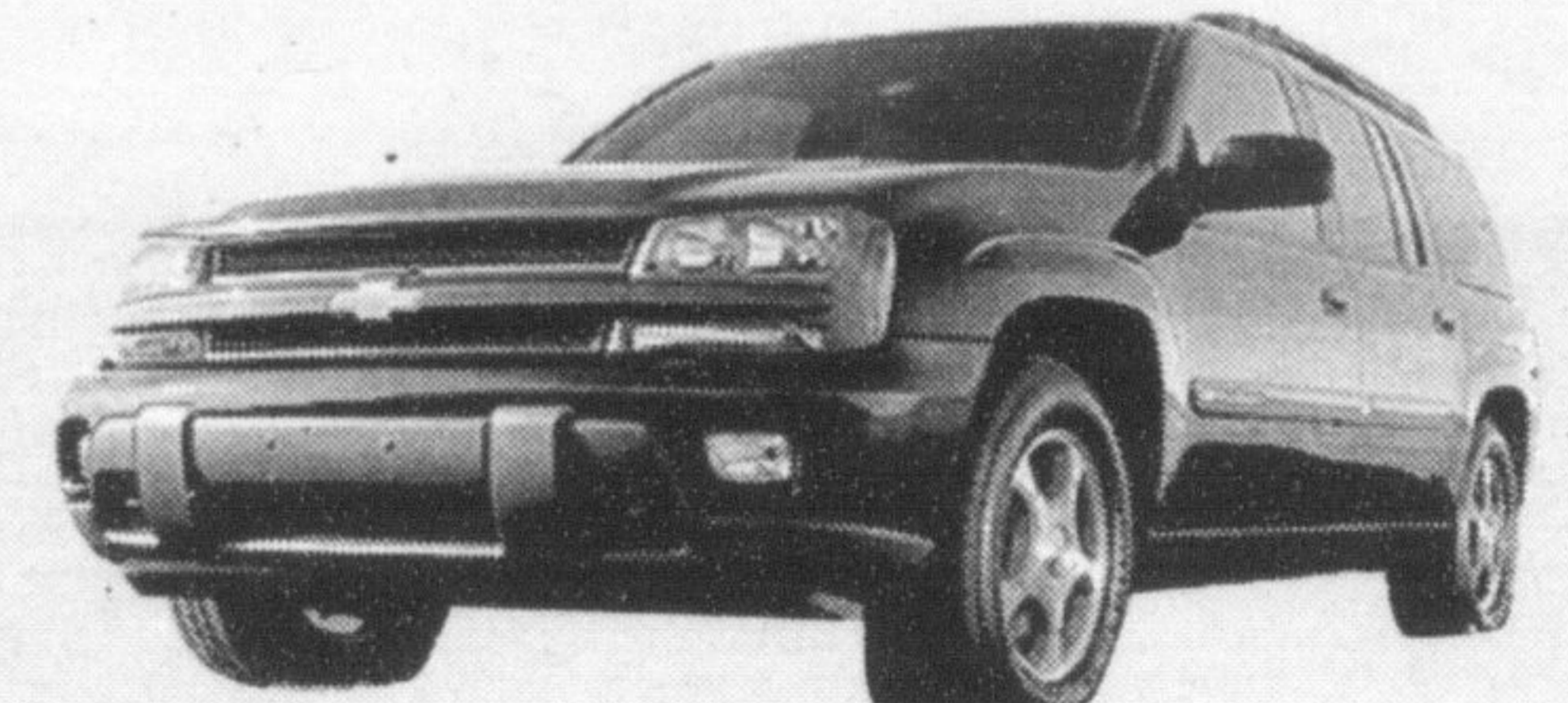
CHEVROLET 2005 Trailblazer

Vortec 4200 275 HP engine, 4-speed automatic transmission with overdrive, autotrac automatic 4WD, dual zone air conditioning, CD stereo, OnStar™, power locks/windows/heated mirrors, remote keyless entry, cruise, 16" alum wheels, 4 wheel ABS

SMART LEASE \$351*

Per mth/48 mths. \$4,940 Down Payment. \$1,050 Freight, \$0 Security Deposit.

DOWN	MONTHLY	TOTAL DUE @ SIGN
\$0	\$459	\$2,253
\$1,500	\$426	\$3,940
\$3,000	\$393	\$5,627



PURCHASE FINANCING 0%

Up to 36 months

PURCHASE CASH PRICE \$38,016*

Excludes Freight & Taxes.

CHEVROLET 2005 Cavalier VL Sedan

2.2L 140 HP ECOTEC engine, 4-speed automatic transmission, air conditioning, theft deterrent system, 60/40 split folding rear seat 5-Year/100,000 km GM Powertrain Warranty with \$0 Deductible

SMART LEASE \$177*

Per mth/48 mths. \$2,940 Down Payment. \$930 Freight, \$0 Security Deposit.

DOWN	MONTHLY	TOTAL DUE @ SIGN
\$0	\$239	\$1,431
\$1,500	\$208	\$3,358
\$3,000	\$176	\$4,808



PURCHASE FINANCING 0%

Up to 72 months

PURCHASE CASH PRICE \$12,998*

Excludes Freight & Taxes.

*Taxes and administration fees extra. See dealer for details.

RICHARDSON CHEVROLET 878-2393

HWY. 25 S. AT DERRY RD., MILTON



Serving Milton For Over 3 Generations

The sensible way to buy a car or truck

401	401
Steeles Ave.	Main St.
Derry Rd	HWY 25 S. MILTON ST.
HWY 5 Dundas	HWY 25 S. MILTON ST.
	DEW