

OUR 21ST ANNUAL SALE IS ON NOW.

PLEASE ENTER THE LOT IN AN ORDERLY FASHION.

SALE EXTENDED!

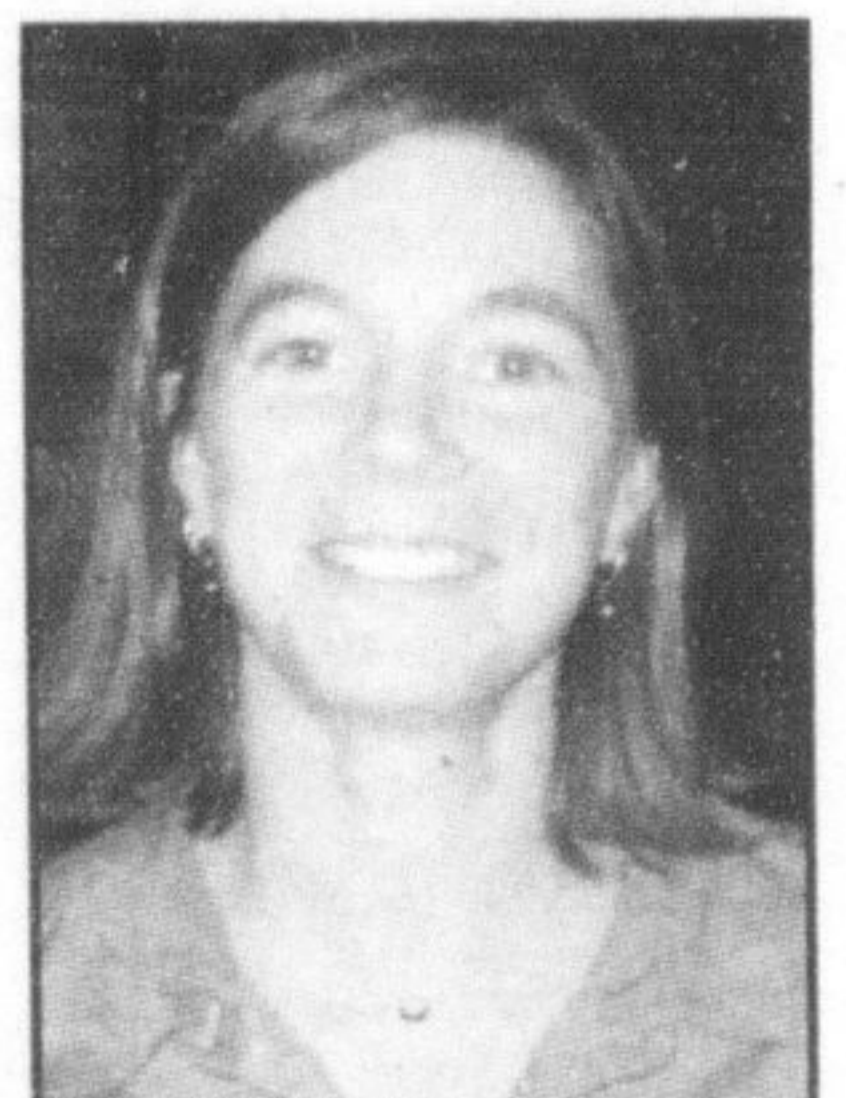
Here's just a sample of over 250 vehicles we have in stock.

YEAR	MAKE	MODEL	MILEAGE	SALE PRICE	YEAR	MAKE	MODEL	MILEAGE	SALE PRICE
2004	Hyundai	Santa Fe GL			2003	Pontiac	Sunfire SLX		
2004	Ford	Freestar SE			2003	Ford	F-150 XLT X-Cab 4x4 Flareside STX		
2001	Dodge	Ram SLT X-Cab 4x4							
2004	BMW	530i	9,850	\$57,995	2004	Jeep	Grand Cherokee Laredo Trail Rated	39,614	\$26,990
2003	Buick	Regal LS	27,494	\$20,990	2004	Mazda	6 GS GFX Pkg	51,169	\$22,889
2002	Buick	Century Custom	50,841	\$13,990					
2004	Cadillac	CTS	32,246	\$36,590	2004	Hyundai	Santa Fe GL	59,421	Just Arrived
2002	Cadillac	Seville SLS	84,665	\$21,968	2001	Hyundai	Accent GS	79,618	\$6,595
2004	Chevrolet	Impala LS	30,227	\$22,995	2001	Hyundai	Elantra VE	79,925	\$8,995
2003	Chevrolet	Silverado LS X-Cab 4x4 Ton	43,806	\$28,773	2001	Hyundai	Sonata GL	58,276	\$10,892
2003	Chevrolet	Sonoma LS X-Cab Extreme	23,069	\$20,698					
2003	Chevrolet	Trailblazer LS 4x4	40,300	\$22,995	2002	Mercury	Cougar V6	85,286	\$11,995
2002	Chevrolet	Malibu LS	63,314	\$11,990					
2002	Chevrolet	Silverado LS X-Cab 4x4	67,412	\$23,955	2004	Nissan	Altima 2.5S	25,404	\$20,461
2002	Chevrolet	Silverado LS X-Cab 2WD	46,793	\$21,990	2003	Nissan	Pathfinder SE	46,113	\$27,915
2002	Chevrolet	Venture	97,958	\$11,482	2002	Nissan	Sentra GXE	32,044	\$12,865
2002	Chevrolet	Venture Extended	80,550	\$11,990	2001	Nissan	Sentra GXE	88,337	\$9,950
					2001	Nissan	Sentra SE 2.0	72,637	\$11,899
2004	Chrysler	Intrepid SE	36,394	\$14,889					
2004	Chrysler	Pacifica 2WD	26,170	\$25,888	2003	Oldsmobile	Alero GX	26,575	\$11,990
2004	Chrysler	Sebring Touring	35,322	\$14,932					
2004	Dodge	Grand Caravan Anniversary Edition	65,828	\$18,874	2004	Pontiac	Grand Prix GT1	13,431	\$20,672
2003	Dodge	Grand Caravan Sport	60,096	\$17,995	2003	Pontiac	Grand AM GT	49,802	\$15,995
2003	Dodge	Ram SLT Quad Cab 4x4	51,630	\$26,990	2003	Pontiac	Grand Prix GT	111,859	\$12,864
2002	Dodge	Caravan SE	62,946	\$13,695	2003	Pontiac	Grand Prix GT	73,944	\$16,995
2002	Dodge	Dakota Quad Cab Sport	102,142	\$17,499	2002	Pontiac	Grand AM SE	74,857	\$10,990
2002	Dodge	Grand Caravan Sport	60,754	\$15,699	2002	Pontiac	Grand AM GT	62,056	\$14,860
					2002	Pontiac	Grand AM GT	54,088	\$14,692
					2002	Pontiac	Sunfire SLX	56,001	\$8,995
2004	Ford	Explorer Limited	18,767	\$34,995	2004	Toyota	4Runner SR5	23,600	\$34,995
2004	Ford	Freestar SE	40,223	\$16,750	2004	Toyota	Camry LE	45,676	\$19,999
2004	Ford	Taurus SEL	49,501	\$16,995	2004	Toyota	Celica	3,000	\$27,990
2003	Ford	Windstar Sport	75,498	\$15,595	2004	Toyota	Corolla Sport Pkg	19,945	\$21,998
2003	Ford	Windstar LTD	52,621	\$19,999	2004	Toyota	Corolla S	26,658	\$19,995
2002	Ford	Explorer XLT	72,798	\$20,994	2004	Toyota	Corolla CE	48,215	\$14,965
2002	Ford	F150 Crew Cab 4x4 King Ranch	77,333	\$28,798	2004	Toyota	Corolla CE	46,265	\$14,965
2002	Ford	Focus SE	62,297	\$9,995	2004	Toyota	Echo	18,597	\$15,495
2002	Ford	Focus SE	43,882	\$12,995	2004	Toyota	Matrix XRS	49,522	\$21,752
2002	Ford	Focus Wagon SE	50,498	\$11,965	2004	Toyota	Sienna LE	38,761	\$31,580
2002	Ford	Focus Wagon SE	62,294	\$12,888	2004	Toyota	Sienna CE	36,314	\$26,522
2002	Ford	Focus Wagon SE	70,102	\$12,792	2004	Toyota	Sienna CE	53,915	\$25,999
					2004	Toyota	Solara SLE Convertible	2,058	\$35,695
2004	GMC	Jimmy SLS 4x4	35,476	\$22,388	2004	Toyota	Tacoma X-Cab 4x4 TRD Off Road	18,675	\$29,995
2004	GMC	Sierra SLE X-Cab Z71	24,297	\$29,995	2004	Toyota	Tacoma Double Cab 4x4	12,405	\$31,598
2002	GMC	Jimmy SLS 4x4	61,939	\$15,950	2003	Toyota	Corolla Sport 'B' Pkg	89,851	\$16,889
2002	GMC	Sierra _ Ton HD Crew Cab SLE 4x4	69,763	\$27,639	2003	Toyota	Matrix XRS	58,278	\$19,398
					2003	Toyota	Tundra X-Cab 4x4	43,644	\$33,995
2002	Honda	Civic LX Sport	71,549	\$15,698	2002	Toyota	Camry XLE	95,479	\$18,933
2002	Honda	Odyssey EXL	76,360	\$24,995	2002	Toyota	Corolla CE Plus	50,464	\$13,895
					2002	Toyota	Corolla CE Plus	77,729	\$13,495
2001	Jaguar	S-Type 4.0	65,931	\$26,995	2002	Toyota	Corolla CE	85,182	\$13,495
					2002	Toyota	Rav4 'B' Pkg	55,300	\$20,895
					2002	Toyota	Sienna LE	99,546	\$19,398

Impaired charges pending in death of former Miltonian

By **STEPHANIE THIESSEN**
The Champion

As the shock begins to wear-off for family and friends left reeling from the death of a former Milton resident, both anger and joy are settling in its place — anger over her death, joy over her life.



Paula Ashby

Paula Ashby, 29, was killed in an auto collision December 12 en route to her job in Calgary.

Const. Jeff Leimer of Calgary police allege alcohol and speed were factors in her death. Six or seven criminal charges are expected to be laid within the next week against the 20-year-old man driving the car that smashed into Ms Ashby's Honda Accord after he allegedly ran a stop sign, Const. Leimer said.

Ms Ashby's father, Campbellville resident Robert Ashby, said the family is suffering added stress by the long wait for the charges.

"We've been told (by police) they're being extremely careful to dot the 'I's and cross the 'T's, but it's beginning to wear on us a bit," he said in an interview from Vancouver.

He added, "They assured us they're coming."

Hundreds of Ms Ashby's friends attended two recent memorial services held in Calgary — at the fitness centre where she worked — and in nearby Canmore.

Friends — including Stanley Williams, who spoke at the Calgary service — touched on her vibrant nature and zest for life.

"She would often give me a kind word or two, which would always be a lift for my spirits," Mr. Williams said in his tribute.

Ms Ashby grew up in Milton and attended Milton District High School where she was known for her athletic abilities, good grades and kindness.

Her sister, 27-year-old Campbellville resident Lesley Ashby, said Paula had no shortage of friends because she knew how to be a friend.

"Paula was hugely popular and admired by her peers and respected by her teachers at Milton District High School."

It's important, Lesley said, that people in Milton know how her sister allegedly died to send a strong message about drinking and driving.

Bryan Camani, now retired, was head of the phys-ed department at Milton District for the five years Ms Ashby attended the school.

She left quite a mark, he said, particularly since she was named Athlete of the Year two years in a row — 1992 and 1993. Her photo continues to hang at the school to mark the accomplishments — a lasting tribute.

With her involvement in badminton, bas-
• see **ASHBY** on page 17

With deals this good, customers tend to get a little enthusiastic. It's no wonder because every one of our cars is carefully selected and must pass our 140-point mechanical, appearance and detail inspection before it ever goes on the lot. If it fails, we won't sell it. We back that up with a 30-day or 2500 km exchange policy, a 6-month or 10,000 km powertrain warranty and a 30-day mechanical warranty. And we put it in writing. So relax. There are enough cars and deals for everyone until the end of January.

410 STEELES AVE. IN MILTON 905-875-2277 GORRUDSAUTOGROUP.COM

GORRUD'S AUTO

DON'T MISS OUR BIG ANNUAL SALE!