



Do you know a bad driver?

Discovery Channel TV show seeking Milton nominees for new series aimed at turning bad drivers into good ones

Milton could soon hold a rather unfavourable distinction.

A new television series entitled Canada's Worst Driver is set to begin production this spring, and will visit a number of Canadian communities in January and February — including this one — to find prospective candidates.

Milton was picked for its high rate of motor vehicle accidents per capita. According to the Ontario Ministry of Transportation figures, the town had a whopping 770 auto collisions in 2002 alone — making it a particularly risky area, and an especially appealing one for the show's producers.

Globally, Canada ranks as one of the worst countries for car acci-

dents — falling far short of places like Germany, China and the United Kingdom.

Hosted by the Discovery Channel, series producer Guy O'Sullivan — director of the award-winning Tommy Douglas segment of CBC's The Greatest Canadian — encourages everyone to nominate their favourite worst driver for the prime-time show, which will air over eight one-hour episodes.

With the help of a panel of experts — including an advanced driver instructor, a motor accident investigator and a behavioural psychologist — Canada's Worst Driver will strive to turn nervous and occasionally confused drivers

into confident motorists.

"The statistics paint a dismal portrait of this nation's drivers," said Mr. O'Sullivan. "A recent Leger Marketing report reveals that two out of 10 Canadians are frightened when traveling in a car with their spouse, while the Ontario Road and Safety Annual Report indicates that over 60 per cent of accidents happen in broad daylight and almost 80 per cent occur in clear weather conditions.

"Clearly, there is an urgent need to identify the contributing factors to poor driving and to make a real effort to correct them. Our program aims to do just that. We've devised a fun way to help hapless drivers overcome their handicaps and make Canada's roadways safer."

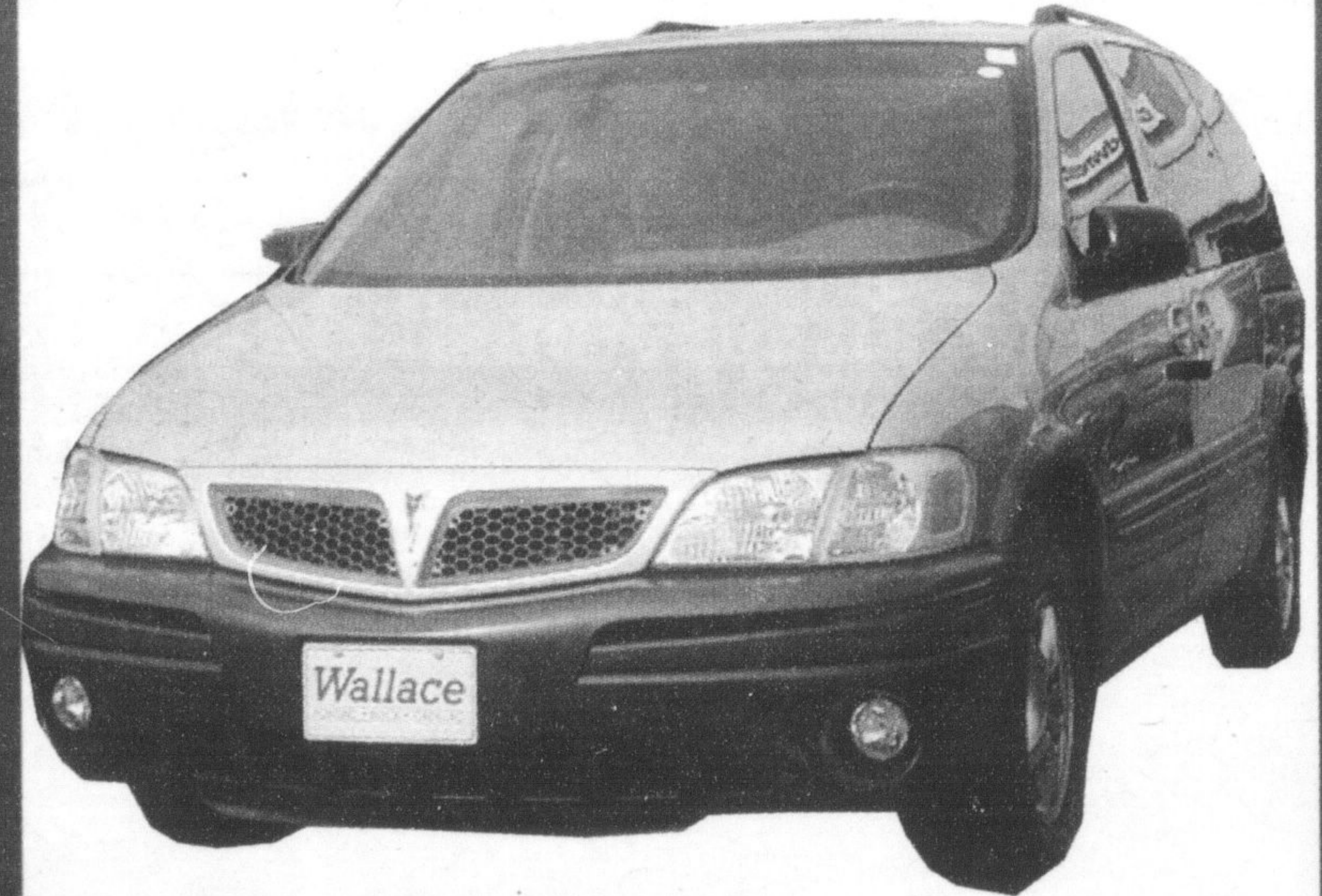
To nominate a candidate for Canada's Worst Driver, call (416) 598-9120 or e-mail canadastworstdriver@yahoo.ca.

HAPPY NEW YEAR

Wallace

PONTIAC • BUICK • CADILLAC

A NEW YEAR, A NEW CAR!



2005 PONTIAC MONTANA EXTENDED

Fully equipped with DVD Player

LEASE FROM ONLY **\$389**/mth

Plus all applicable taxes & admin fee, 48 mth lease. O.A.C.



2005 PONTIAC G6

3.5L 200-hp V6 engine, 4-spd auto with o/d, remote keyless entry, A/C, cruise control, 4 wheel disc brakes, 16" twin 5-spoke alum. wheels, 6 speaker CD stereo, pwr locks, windows, mirrors, tilt/telescopic adjustable steering wheel, fog lights

LEASE FROM ONLY **\$279**/mth

Plus all applicable taxes & admin fee, 48 mth lease. No security deposit



2005 GMC SIERRA CREW CAB

2500 HD diesel, leather, fully loaded

LEASE FROM ONLY **\$785**/mth

Plus all applicable taxes & admin fee, 36 mth lease. O.A.C.

PONTIAC
BUICK
Cadillac
GMC
WALLACE PONTIAC
BUICK CADILLAC LTD.

Wallace

PONTIAC • BUICK • CADILLAC

905-878-2355

801 MAIN ST. E. MILTON

MON. - THURS.
9:00 AM - 8:00 PM
FRI. & SAT.
9:00 AM - 6:00 PM

TOLL FREE 1-888-878-2354

See your dealer for conditions and details.

LaRose

Italian Bakery and Delicatessen

Fresh Bread and Buns Baked daily 7 days a week!

Bakery Specials

Fresh... Baked Daily!

Fresh... Pizza Dough **59¢** ea. SAVE 40¢

Fresh... Baked Daily!

Kaiser Buns **\$1.69** dozen or .15 ea.

Deli Specials

Brandt's Cooked Roast Beef **\$3.99** lb OR .88/100g

Brandt's Montreal Smoked Meat **\$3.99** lb OR .88/100g

Brandt's Cooked All Beef Salami & Vienna Cooked Salami Sausage **\$2.99** lb OR .66/100g

Produce Specials

Product of USA, No. 1 Grade Fresh... Field Tomatoes **99¢** lb.

Product of USA, No. 1 Grade Fresh... Broccoli **99¢** bunch

Product of Costa Rica, No. 1 Grade Fresh... Sweet... Golden Pineapples **\$2.99** ea.

Product of Italy, No. 1 Grade, Fresh... Large Size... Chestnuts **\$1.99** lb.

SPECIALS IN EFFECT FROM TUES. JAN 4TH TO MON. JAN. 10TH, 2005.

327 Bronte Street S. • White Oaks Plaza

905-875-0303

Regular Store Hours

Mon.-Thurs. 8:30 am - 7 pm
Friday 8:30 am - 8 pm
Saturday 8:30 am - 6 pm
Sunday 9:00 am - 5 pm