

YEAR END SALE EVENT

THE YEAR'S BEST DEALS. HURRY, LIMITED TIME.

'TIS THE SEASON TO MAKE NO PAYMENTS.

TWO FREE LEASE PAYMENTS

THE SPECIAL EDITION
2005 SENTRA 1.8

LEASE FROM
\$199
/MONTH FOR 60 MTHS

Downpayment or equivalent trade of \$1,440 (Freight and PDE included)
0 DOWNPAYMENTS LEASES ALSO AVAILABLE. 3.8%*
OR CHOOSE PURCHASE FINANCING STARTING AT **3.8%***
AND MAKE NO PAYMENTS FOR 90 DAYS



Well equipped at **\$16,998 MSRP** • 126-HP Engine • Air Conditioning • CD/AM/FM Audio System • Power Trunk Release • Power Windows, Locks, and Outside Mirrors • Remote Keyless Entry System • And More...

FREE + **FREE** + **\$500** + **\$700** + **\$0** = **GREAT VALUE**
1ST LEASE PAYMENT 2ND LEASE PAYMENT GAS CARD* IN EXTRA VALUE** SECURITY DEPOSIT

THE 2005 ALTIMA 2.5 S EXTRA
The Cure for the Common Car

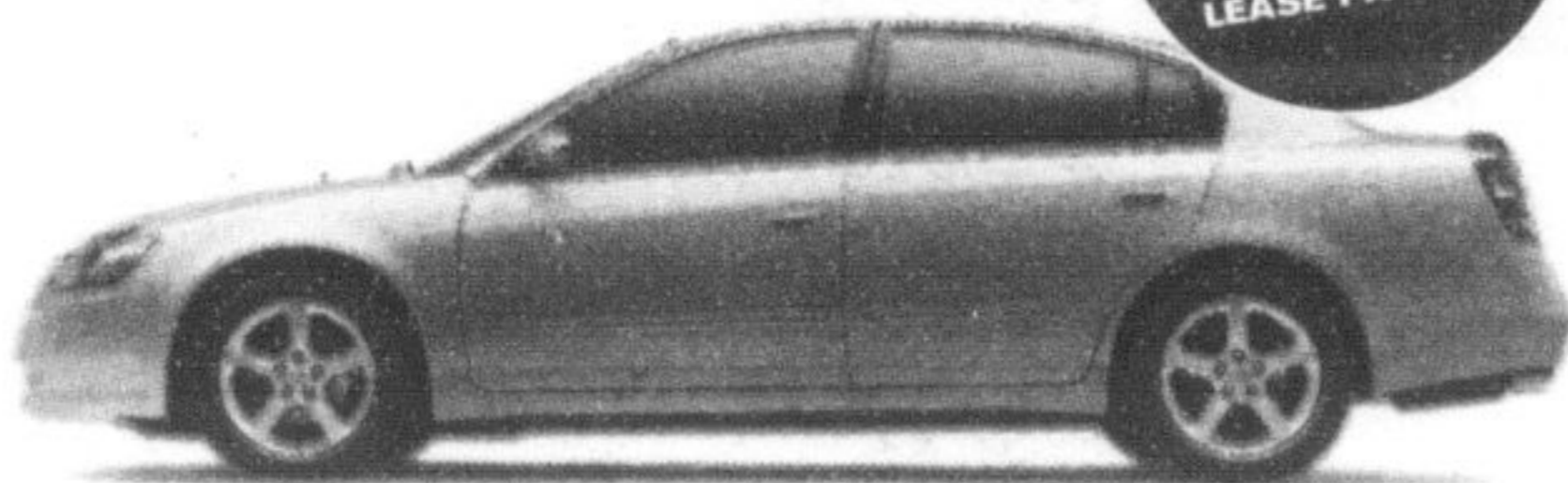
Well equipped at **\$25,298 MSRP**

- 175-HP 2.5-Litre DOHC Engine (V6 available) • Automatic Transmission
- Air Conditioning • Power Locks, Windows and Heated Outside Mirrors
- Remote Keyless Entry System • CD/AM/FM Audio System (w/6-speakers)
- Leather Wrapped Steering Wheel • And More...

LEASE FROM
\$269
/MONTH FOR 48 MTHS

Downpayment or equivalent trade of \$4,190 (Freight and PDE included)
0 SECURITY DEPOSIT
OR CHOOSE PURCHASE FINANCING STARTING AT **1.8%***
AND MAKE NO PAYMENTS FOR 90 DAYS*

PLUS
\$1,000



TWO FREE LEASE PAYMENTS

THE NEW 2005 ALL-WHEEL DRIVE X-TRAIL
One of the most fuel-efficient SUV's

Well equipped at **\$27,200 MSRP**

- 165 HP 2.5 L DOHC Engine • 6 Speaker AM/FM/CD Audio System
- Cruise Control • 4 Wheel Vented Disc Brakes with ABS • Air Conditioning
- Power Windows, Locks, and Heated Outside Mirrors • And More...

LEASE FROM
\$279
/MONTH FOR 48 MTHS

Downpayment or equivalent trade of \$4,690 (Freight and PDE included)
0 SECURITY DEPOSIT
OR CHOOSE PURCHASE FINANCING STARTING AT **3.8%***
AND MAKE NO PAYMENTS FOR 90 DAYS*

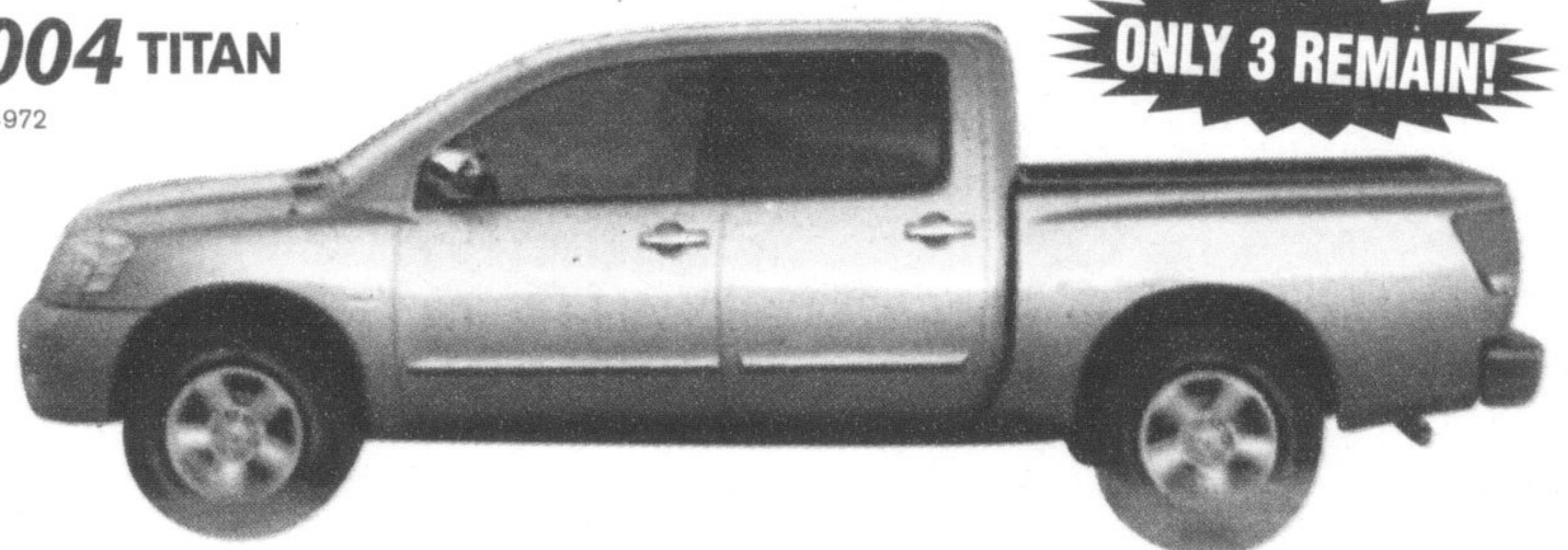


TWO FREE LEASE PAYMENTS

NO FINANCE PAYMENTS FOR 90 DAYS
ON REMAINING 2004'S

2004 TITAN
Stk T4972

ONLY 3 REMAIN!



LEASE FROM
\$399
/MONTH FOR 48 MTHS

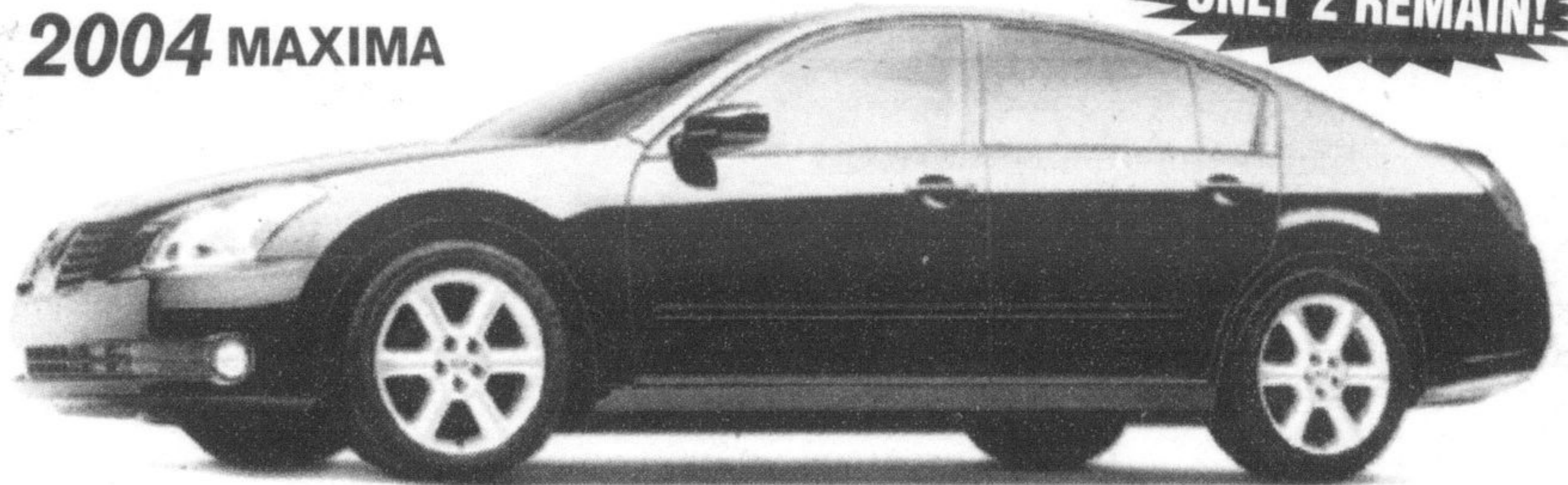
24,000 km/year with a residual of \$12,760
0 DOWN FREIGHT INCL. 1.9%*
LEASE FINANCING STARTING AT **1.9%***
AND MAKE NO PAYMENTS FOR 90 DAYS

~~MSRP \$31,900~~
SALE PRICE
\$28,380

*TAXES, ADM & REGISTRATON FEE EXTRA

2004 MAXIMA

ONLY 2 REMAIN!



LEASE FROM
\$469
/MONTH FOR 48 MTHS

24,000 km/year with a residual of \$17,116
0 DOWN FREIGHT INCL. 3.6%*
LEASE FINANCING STARTING AT **3.6%***
AND MAKE NO PAYMENTS FOR 90 DAYS

~~MSRP \$38,900~~
SALE PRICE
\$34,900

*TAXES, ADM & REGISTRATON FEE EXTRA

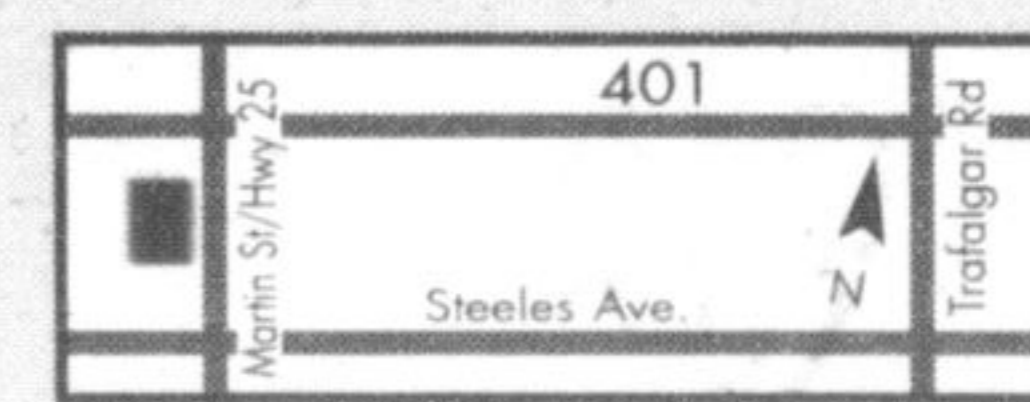
▲ A pre-paid Petro-Canada \$500 gas card as bonus (with the donation of one cent) with purchase or lease of in-stock new and demo 2004 or 2005 Sentra models delivered on or before January 03, 2005. Gas card expires November 2006. Gas Card cannot be redeemed for cash at dealerships and cannot be used for tobacco purchases. See dealer for full details. All offers are O.A.C. available for a limited time, may change without notice and cannot be combined with any other offers. Offers apply to new 2005 Nissan Sentra Special Edition (C4CG55 AA00), Altima Extra (T4RG75 CK10), X-Trail XE (Y6RG55 AA00). 148 month lease on Altima, X-Trail with ALR's of 4.6%/4.0%; 60 month lease on Sentra with ALR of 3.8%. Leases based on a maximum of 24,000 km per year with excess charged at \$0.10/km. Licence, insurance, registration fees, PPSA, security deposit, and taxes are extra and must be paid at the time of transaction. Dealer may sell/lease for less. Dealer order/trade may be necessary. First payment due 90 days from delivery date. No interest for 60 days. *1.8%/3.8% purchase financing available for 36 months on 2005 Altima Extra/2005 X-Trail XE; 3.8% available for 48 months on 2005 Sentra Special Edition. Financing examples: \$20,000 at 1.8%/3.8% per annum for 36 months equals \$571.11/\$588.70 per month. COB is \$559.85/\$1,193.27 for an obligation total of \$20,559.85/\$21,193.27. \$15,000 at 3.8% per annum for 48 months equals \$337.35 per month. COB is \$1,192.56 for an obligation total of \$16,192.56. **\$700 in added value represents price difference between 2004 Sentra Value Option Package and 2005 Special Edition; \$1,000 in extra value reflects price difference between 2.5 S model versus 2.5 S Extra model. #Nissan Graduate Program available on 2004 Sentra, Altima, Xterra and 2005 Sentra, Altima and X-Trail models. Vehicles not exactly as shown and used for illustration purposes only. The Nissan names, logos, product names, feature names, and slogans are trademarks owned by or licensed to Nissan Motor Co. Ltd and/or its North American subsidiaries.

NISSAN GRAD PROGRAM*

Milton's
NORTH END NISSAN LTD.

610 MARTIN STREET, MILTON
905-878-4137

SALES DEPT. HOURS:
Mon.-Thurs. 9:00 - 9:00
Fri. 9:00 - 6:00
Sat. 9:00 - 5:00



www.nissan.ca



SHIFT

1998 ALTIMA GXE

- Auto • Silver
- 80,000 km
- Stk 4952A

\$9,380

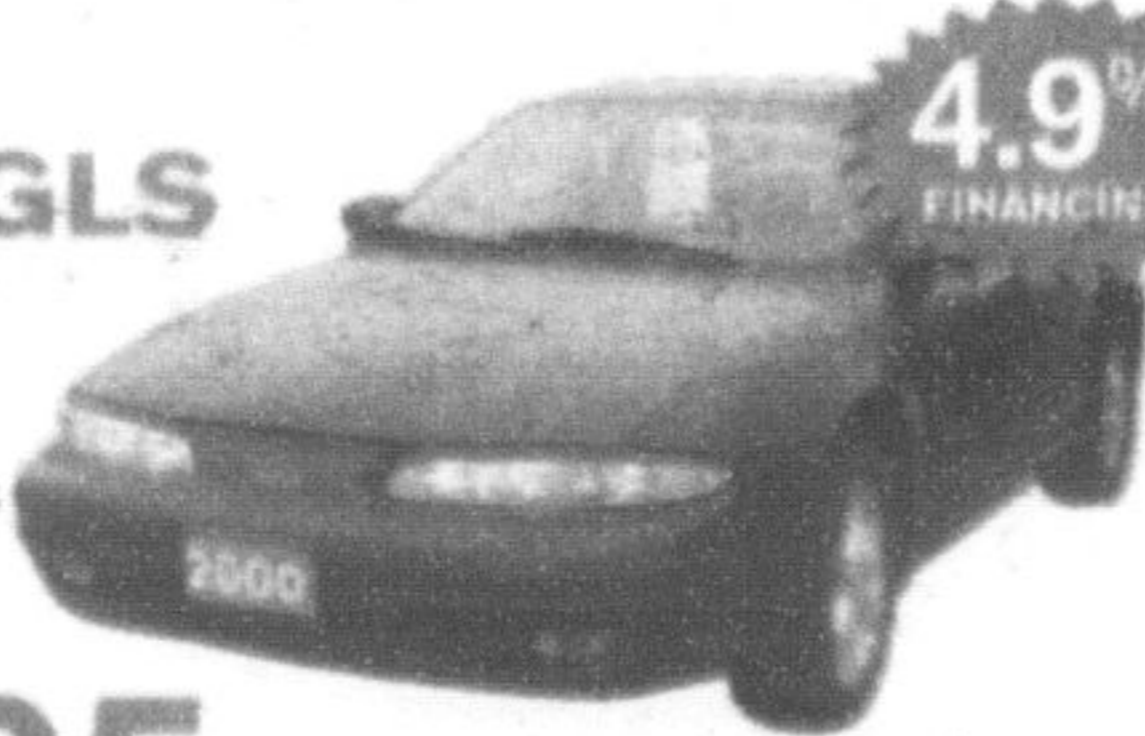


4.9% FINANCING

2000 ALERO GLS

- 2 dr • loaded
- green • 98,000 kms
- Stk P20288

\$9,995



4.9% FINANCING

2001 MILLENIA S

- Loaded • roof
- black • 90,000 kms
- Stk 4731A

\$18,880



4.9% FINANCING

2003 PATHFINDER CHILKOOT

- Auto • pewter
- 53,000 kms
- Stk P20286

\$24,950



4.9% FINANCING