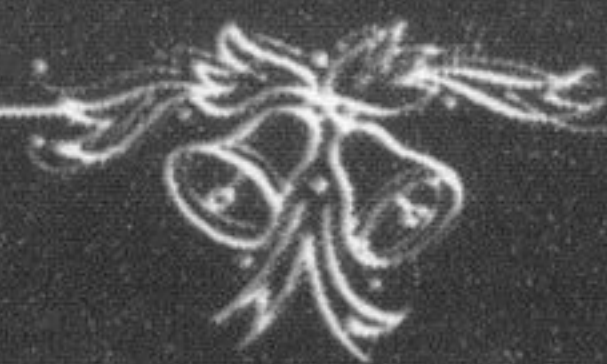
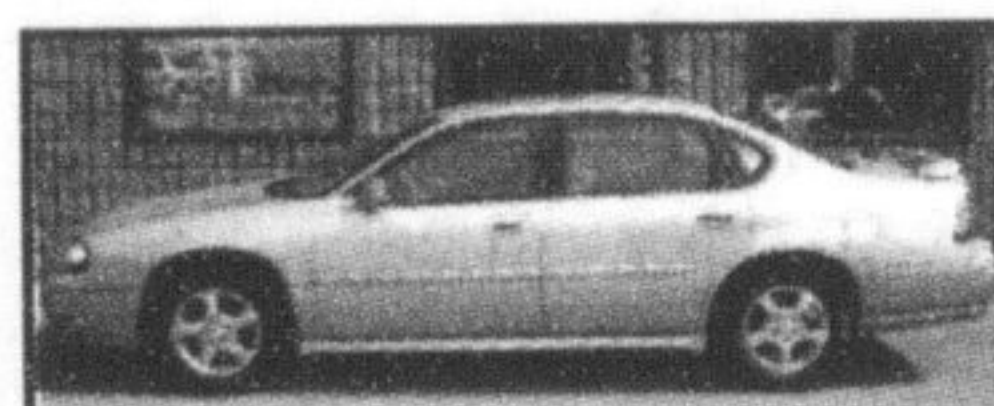


CAN'T GET ENOUGH OF THAT GREAT DEAL ON A USED CAR SMELL?



Here's just a sample of over 250 vehicles we have in stock.



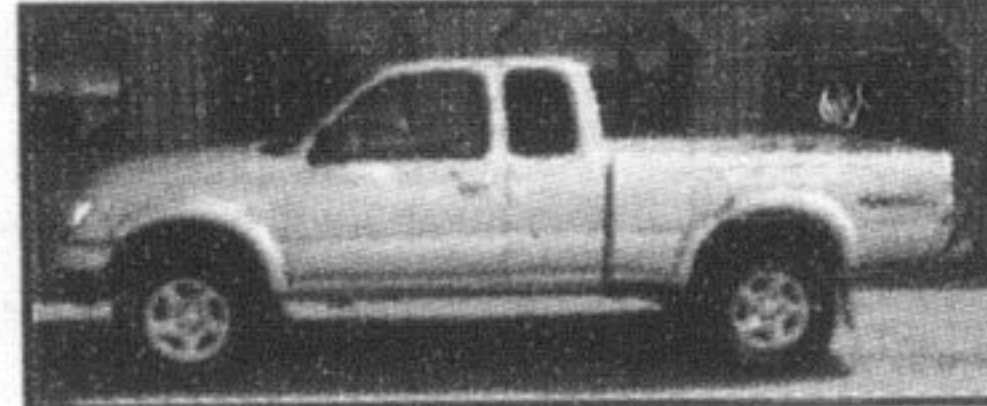
2004 Chev Impala, absolutely loaded only 30,000 km \$23,437.



2004 Sienna CE, rear air & heat, save on freight & ar tax 36,000 km \$26,522



2003 GM Yukon SLT, loaded including 3rd seat \$29,992



2004 Tacoma X-Cab 4x4 TRD-Offroad Demo, only 18,000km \$29,995



2002 Cadillac SLS, has options including chrome rims, 84,000km \$21,968

YEAR	MAKE	MODEL	MILEAGE	SALE PRICE	2004	2004	2004	2004	2004
					Lexus	GX470 Ultra Premium Pkg	9,400	\$67,995	
					MAZDA				
2004					Mazda	6 GS GFX Pkg	51,169	\$22,889	
2000					Mazda	Protégé SE	50,826	\$11,995	
					MERCUY				
2002	Cadillac	Seville SLS	84,665	\$21,968	2002	Mercury	Cougar V6	85,286	\$11,995
					NISSAN				
2004	Chevrolet	Impala LS	30,227	\$23,487	2004	Nissan	Altima 2.5 S	32,578	\$20,461
2003	Chevrolet	Sonoma LS X-Cab Extreme	23,069	\$20,698	2003	Nissan	Pathfinder SE	46,113	\$27,915
2003	Chevrolet	Silverado LS, Xcab, 4x4, 3/4 Ton	43,806	\$28,773	2002	Nissan	Sentra GXE	32,044	\$12,865
2002	Chevrolet	Malibu LS	63,314	\$12,990	2001	Nissan	Sentra GXE	88,337	\$10,860
2002	Chevrolet	Venture Extended	80,550	\$12,990	2001	Nissan	Maxima SE 20th Anniversary	59,603	\$20,991
2002	Chevrolet	Silverado LS X-Cab 2WD	46,793	\$21,990	2001	Nissan	Pathfinder LE	60,365	\$23,984
2002	Chevrolet				1997	Nissan	Pathfinder	131,469	\$11,950
					OLDSMOBILE				
2004	Chrysler	Sebring Touring	33,451	\$14,864	2003	Oldsmobile	Alero GX	26,575	\$12,758
2004	Chrysler	Intrepid SE	36,394	\$14,889	2002	Oldsmobile	Alero GL	57,602	\$12,690
2004	Chrysler	Sebring Touring 4 Dr.	33,710	\$14,999	2002	Oldsmobile	Alero GLS	50,883	\$14,990
2000	Chrysler	Town & Country Ltd.	148,477	\$12,688					
					PONTIAC				
2003	Dodge	RAM SLT Quad Cab 4x4	51,630	\$26,990	2004	Pontiac	Montana Extended	34,881	\$18,922
2002	Dodge	Caravan SE	62,946	\$13,695	2003	Pontiac	Sunfire	53,178	\$10,990
2002	Dodge	Grand Caravan Sport	70,114	\$15,498	2002	Pontiac	Grand AM SE	74,857	\$11,990
2002	Dodge	Grand Caravan Sport	60,754	\$15,699	2001	Pontiac	Montana Extended	85,823	\$13,898
2002	Dodge	Dakota Quad Cab / 2WD	102,142	\$17,499					
					TOYOTA				
2004	Ford	F150 STX Regular Cab 2WD Flareside	00288	\$25,662	2004	Toyota	Corolla CE	48,716	\$14,965
2003	Ford	Windstar LX	70,494	\$14,888	2004	Toyota	Echo	18,597	\$15,495
2003	Ford	F150 XLT X-Cab 4x4 Flareside STX	41,800	\$24,999	2004	Toyota	Camry LE	38,459	\$19,890
2002	Ford	Focus SE	62,297	\$10,993	2004	Toyota	Camry LE	35,791	\$19,890
2002	Ford	Focus Wagon SE	50,498	\$11,965	2004	Toyota	Matrix XRS	49,522	\$21,752
2002	Ford	Explorer XLT 4X4	72,798	\$20,994	2004	Toyota	Corolla Sport Pkg	19,945	\$21,998
2002	Ford	F150 XLT X-Cab 4x4 Off Road	57,726	\$22,994	2004	Toyota	Camry LE	16,377	\$22,758
2002	Ford	F150 Crew Cab 4x4 King Ranch	77,333	\$28,798	2004	Toyota	Camry LE V6	37,399	\$24,683
					2004	Toyota	Tacoma Double Cab 4x4	12,405	\$31,598
					2004	Toyota	Solara SLE Convertible	1,565	\$35,695
					2004	Toyota	Highlander B Pkg	12,521	\$35,995
					2003	Toyota	Corolla LE	38,848	\$15,999
					2003	Toyota	Corolla Sport B Pkg	89,851	\$16,889
					2003	Toyota	Corolla LE B Pkg	44,089	\$19,595
					2003	Toyota	Highlander V6 AWD	31,274	\$27,948
					2003	Toyota	Tundra LTD 4x4 X-Cab	43,644	\$33,995
					2002	Toyota	Corolla CE Plus	50,464	\$13,895
					2002	Toyota	RAV4 B Pkg	55,300	\$20,895
					2001	Toyota	Highlander A Pkg	86,810	\$24,873
					2000	Toyota	Sienna LE	111,882	\$15,992
					VOLKSWAGEN				
2004	Lexus	ES330 Premium Luxury Pkg	5,300	\$44,995	2002	Volkswagen	Jetta GLS 1.8 Turbo	95,600	\$16,998
2004	Lexus	RX330 Ultra Premium Pkg	8,000	\$56,995					

HERE ARE SOME GREAT VEHICLES FOR UNDER \$10,000

OPEN SUNDAYS
11:00 AM TO 4:00 PM

CHEVROLET					PONTIAC				
2001	Chevrolet	Cavalier	94,796	\$7,990	2002	Pontiac	Sunfire SFI	56,082	\$9,989
1998	Chevrolet	Trail Blazer	160,140	\$7,950	2001	Pontiac	Sunfire	71,019	\$8,888
					2000	Pontiac	Grand AM SE	150,466	\$7,995
					1999	Pontiac	Grand AM SE	116,573	\$6,995
CHRYSLER					SATURN				
2000	Chrysler	Neon LE	92,417	\$6,999	1998	Saturn	SW2	114,327	\$6,995
2000	Chrysler	Neon LX	95,438	\$8,595					
DODGE					TOYOTA				
1998	Dodge	Caravan SE	146,178	\$7,595	1999	Toyota	Corolla CE	114,503	\$9,595
					1997	Toyota	RAV4 AWD	145,149	\$9,995
HYUNDAI					VOLKSWAGEN				
2000	Hyundai	Tiburon	112,408	\$9,495	1999	Volkswagen	Jetta	141,108	\$7,550
2000	Hyundai	Accent GS	71,902	\$5,999	1997	Volkswagen	Golf CL	107,088	\$7,992
OLDSMOBILE									
2000	Oldsmobile	Silhouette GL Extended	151,612	\$9,995					

Every one of our cars is carefully selected and must pass our 110-point mechanical, appearance and detail inspection before it ever goes on the lot. If it fails, we won't sell it. We back that up with a 30-day or 2500 km exchange policy, a 6-month or 10,000 km powertrain warranty and a 30-day mechanical warranty. And we put it in writing. When you've been giving great warranties on a wide selection vehicles every year for 21 years, you get used to the smell great deals.

410 STEELES AVE. IN MILTON 905-875-2277 GORRUDSAUTOGROUP.COM

GORRUD'S AUTO

OUR 21ST ANNUAL SALE IS ON NOW!

Drive "going pretty good"

Salvation Army
to help about 130
families through
holiday season

By MELANIE HENNESSEY
The Champion

Food and toys are steadily rolling in at the Milton Salvation Army as the local charity gears up for the Christmas rush.

"We're up and running, and it's going pretty good," said Family Service Worker Laurie Good. "Lots of toys are coming in, and food."

Ms Good said there's nothing the local Salvation Army is really lacking right now, but any non-perishable food donations would be appreciated.

Recently, Milton firefighters helped kick-start the holiday giving season by holding a food drive that brought in about 34,000 pounds of food for the Salvation Army.

"We rely mainly on the annual firefighters' food drive," Ms Good said. "It (the food) pretty much lasts to the next food drive."

She noted that there's also lots of private donations coming in as well.

"The town is very generous, as usual," she said.

Even though Milton has and continues to experience tremendous growth, Ms Good said she hasn't seen an increase in the number of families coming in.

Each year, the Milton Salvation Army puts a Christmas meal on the table and presents under the tree for between 130 and 150 families, with Ms Good predicting the numbers will lean closer to 130 this year.

"It fluctuates up and down each year," she said.

Those looking to use the Salvation Army's services are asked to bring in identification and personal information like proof of income.

"We want to make sure we give to those that are truly in need," Ms Good said.

This week, the Salvation Army's toy store will be set up at its Nipissing Road location, where Ms Good said children's gifts will be organized by age and sex appropriateness. Clients can browse through and get their Christmas shopping done, and then pick up goodies for a holiday meal.

To make a donation to the Salvation Army, stop by the above-mentioned address or look for the various drop-off points around town. Those who usually take their donations to Milton Mall should note the drop-off spot has been moved to the food court.

The Champion is also raising money for the Salvation Army through the Christmas Bureau Fund. So far, about \$13,200 has been raised. But, more donations are needed to reach this year's goal of \$30,000. Those wishing to donate should make cheques payable to the Christmas Bureau Fund and drop them off at The Champion office, 191 Main St. E.

Melanie Hennessey can be reached at mhennessey@miltoncanadianchampion.com