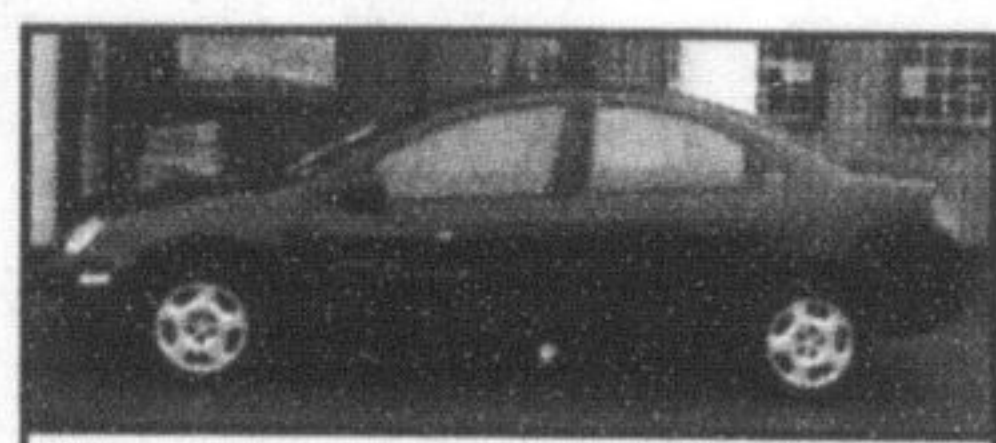


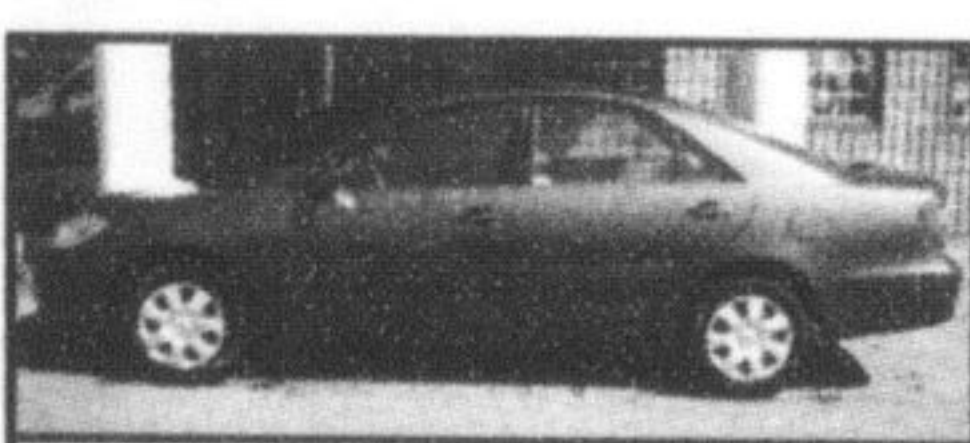
OUR 21ST ANNUAL SALE IS ON NOW.

PLEASE ENTER THE LOT IN AN ORDERLY FASHION.

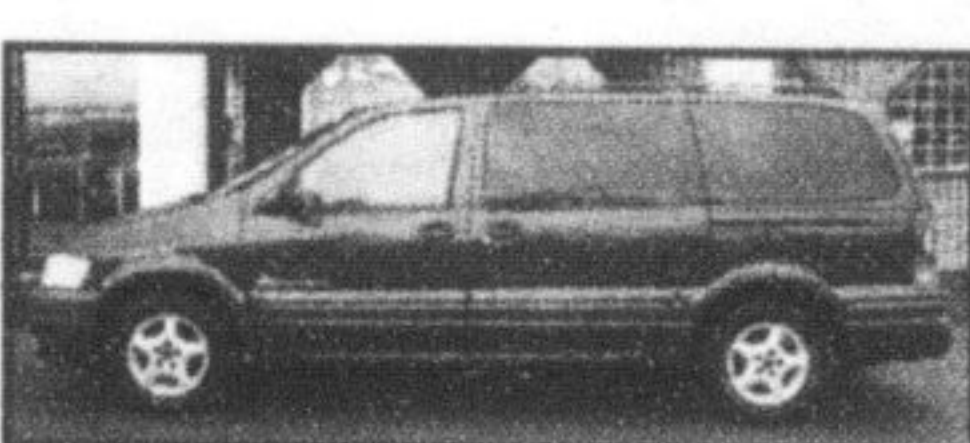
Here's just a sample of over 250 vehicles we have in stock.



2000 Chrysler Neon LE (only 92,000km auto & air conditioning) \$6,999



2004 Toyota Camry LE (only 45,000km)



2004 Pontiac Montana Extended (only 34,000km rear air conditioning) \$18,922



2002 Ford Focus SE (auto, air, pw, pl, balance of Ford warranty) \$10,993



2003 Oldsmobile Alero 4dr. (only 26,000km) \$12,758

YEAR	MAKE	MODEL	MILEAGE	SALE PRICE	2000	2000	2000	2000	2000
2000	Audi	A6 2.8 Quattro	79,741	\$23,870	Jeep	Cherokee Sport	112,408	\$12,990	
2000	Cadillac	Seville SLS	84,665	\$21,968	MAZDA	6 GS GFX Pkg.	51,169	\$22,889	
2001	Cadillac	Deville DTS	85,512	\$21,995	2000	Protégé SE (power moonroof)	50,826	\$11,995	
2004	Chevrolet	Impala LS (leather & moonroof)	30,227	\$23,487	NISSAN				
2003	Chevrolet	Silverado LS X-Cab 4x4 ? Ton	43,806	\$28,773	2004	Altima 2.5S	25,404	\$20,461	
2003	Chevrolet	Sonoma LS X-Cab Extreme	23,069	\$20,698	2004	Altima SE 3.5 (leather, moonroof)	31,470	\$25,888	
2002	Chevrolet	Malibu LS (leather & moonroof)	63,314	\$12,990	2003	Pathfinder SE	46,113	\$27,915	
2002	Chevrolet	Silverado LS X-Cab 2WD	46,793	\$21,990	2002	Sentra GXE	32,044	\$12,865	
2002	Chevrolet	Silverado LS X-Cab 4x4	67,412	\$24,955	2001	Maxima SE 20th Anniversary	59,603	\$20,991	
2002	Chevrolet	Venture	97,958	\$11,482	2001	Pathfinder LE	60,365	\$23,984	
2002	Chevrolet	Venture Extended	80,550	\$12,990	2001	Sentra GXE	88,337	\$10,860	
2001	Chevrolet	Tahoe LS 4x4 (leather & third seat)	64,052	\$25,990	1998	Pathfinder SE (leather, moonroof)	147,697	\$12,995	
2004	Chrysler	Sebring Touring	35,322	\$14,932	1997	Pathfinder SE (leather, moonroof)	131,469	\$11,950	
2000	Chrysler	Town & Country Ltd.	148,477	\$12,688	OLDSMOBILE				
2003	Dodge	Ram SLT Quad Cab 4x4	51,630	\$26,990	2002	Alero GL	57,602	\$12,690	
2002	Dodge	Dakota Quad Cab Sport	102,142	\$17,499	2000	Silhouette Premier Extended	95,842	\$13,784	
2002	Dodge	Grand Caravan Sport	60,754	\$15,699	PONTIAC				
2001	Dodge	Caravan Sport (quad seats)	89,453	\$11,695	2003	Grand Prix GT	31,035	\$17,998	
2003	Ford	F150 XLT X-Cab 4x4 Flareside STX	41,800	\$24,999	2003	Sunfire	53,178	\$10,990	
2003	Ford	Windstar LX	70,494	\$14,999	2002	Grand AM SE	74,857	\$11,990	
2002	Ford	Explorer XLT 4x4	72,798	\$20,994	2002	Grand AM GT	62,221	\$14,498	
2002	Ford	F150 Crew Cab 4x4 King Ranch	77,333	\$28,798	2001	Grand Prix GT	59,967	\$14,958	
2002	Ford	Focus Wagon SE	50,498	\$11,965	2001	Montana Extended	85,823	\$13,898	
2004	GMC	Jimmy SLS 4x4	40,855	\$21,859	TOYOTA				
2004	GMC	Sierra SLE X-Cab Z71	40,819	\$27,992	2004	Camry LE	38,459	\$19,890	
2003	GMC	Yukon SLT 4x4	71,692	\$29,992	2004	Corolla CE	46,265	\$14,965	
2002	GMC	Sierra 1/2 Ton HD Crew Cab SLE 4x4	69,763	\$27,639	2004	Sienna CE	53,915	\$25,999	
2000	GMC	Safari SLT AWD	71,364	\$17,690	2003	Corolla LE	38,848	\$15,999	
2003	Honda	Odyssey EX	56,624	\$25,998	2003	Corolla Sport 'B' Pkg	89,851	\$16,889	
2002	Honda	Civic LX Sport	71,549	\$15,698	2003	Corolla Sport	69,763	\$17,873	
2001	Infiniti	QX4	72,470	\$26,873	2003	Highlander V6 AWD	31,274	\$27,948	
2001	Jeep	Grand Cherokee 60th Anniversary	69,398	\$24,892	2003	Matrix XRS	58,278	\$19,398	
2001	Jeep	Grand Cherokee Laredo	79,015	\$18,560	2003	Tundra Ltd. Ext Cab 4x4	43,644	\$33,995	
					2002	Camry XLE	95,479	\$18,933	
					2002	Camry LE	62,678	\$17,989	
					2002	Corolla CE Plus	50,464	\$13,895	
					2002	Rav4 'B' Pkg	55,300	\$20,895	
					2001	Sienna LE	99,546	\$19,398	
					2000	Highlander V-6 All wheel drive	84,958	\$24,760	
					2000	Sienna LE	98,479	\$17,884	
					2000	Sienna LE	111,882	\$15,992	
					VOLKSWAGEN				
					2002	Volkswagen Jetta GLS 1.8 Turbo	95,600	\$16,998	

HERE ARE SOME GREAT VEHICLES FOR UNDER \$10,000

OPEN SUNDAYS
11:00 AM TO 4:00 PM

2001	Chevrolet	Cavalier	94,796	\$7,990	2002	Pontiac Sunfire	56,082	\$9,989
2001	Chrysler	Neon LE	92,417	\$6,999	2002	Pontiac Sunfire SFI	56,001	\$9,898
2001	Chrysler	Neon LX	95,438	\$8,995	2001	Pontiac Sunfire	71,019	\$8,888
1998	Dodge	Caravan SE	146,178	\$7,595	1998	Saturn SC1	139,773	\$5,995
2000	Hyundai	Accent GS	71,902	\$5,999	1998	Saturn SW1	141,508	\$5,395
2000	Hyundai	Tiburon SE	112,796	\$9,495	1998	Saturn SW2	114,327	\$6,995
2001	Nissan	Sentra XE	66,230	\$9,510	1999	Toyota Corolla CE	114,503	\$9,595
2000	Oldsmobile	Silhouette GL Extended	151,612	\$9,995	1997	Toyota Rav4 AWD	145,149	\$9,995
					1997	Volkswagen	107,088	\$7,992

With deals this good, customers tend to get a little enthusiastic. It's no wonder because every one of our cars is carefully selected and must pass our 110-point mechanical, appearance and detail inspection before it ever goes on the lot. If it fails, we won't sell it. We back that up with a 30-day or 2500 km exchange policy, a 6-month or 10,000 km powertrain warranty and a 30-day mechanical warranty. And we put it in writing. So relax. There are enough cars and deals for everyone until the end of January.

410 STEELES AVE. IN MILTON 905-875-2277 GORRUDSAUTOGROUP.COM

GORRUD'S AUTO

DON'T MISS OUR BIG ANNUAL SALE!

Town may implement new user fees: study

By MELANIE HENNESSEY
The Champion

The Town could soon implement new fees for things like burning permits and substantially hike the costs for other services it already charges for.

The proposed user fees and accompanying study came before Milton council Monday night during the public meeting portion of the session for consideration and will be back on the table for adoption December 20.

"User fees have been a very important source of revenue," Town Director of Corporate Services Jim McQueen said.

In fact, a report from Mr. McQueen predicted the updated fees could generate an \$800,000 increase in revenues next year.

A fee review started in the summer to decide if some costs should be increased, decreased or stay the same. To determine this and decide if the fees are reasonable, a comparison was done of similar fees within the market, quality of service provided and the user's ability to pay, Mr. McQueen's report detailed.

Of note is the new fees being recommended by Town staff, such as for a burning permit, which could soon cost \$25.

"This fee covers the cost associated with preparation of the permit and logging the issuance," the report said.

Licensing fees of \$111 for pawn brokers and second-hand dealers, \$135 for personal services businesses and \$245 for a taxi/limo broker are also proposed.

Some of largest fee increases come from the planning and development department, with a potential \$9,320 hike for an Official Plan amendment, \$22,580 increase for a vacant land condo/subdivision review and a whopping \$55,920 jump for a large site plan approval.

The planning fees raised concerns for some local developer groups, such as the Halton division of the Urban Development Institute (UDI).

Glen Wellings of the UDI local chapter told council the fees are "staggering" when it comes to small-scale developments.

"I think these fees could serve as a deterrent," he said, adding that he foresees the Town receiving calls from people saying they simply can't afford the planning costs.

He said UDI also has serious concerns with the fee review process and that he was only provided with a copy of the consultant's report Monday night.

"This is insufficient stakeholder consultation," he said.

Paula Tenuta from the Greater Toronto Home Builders' Association shared similar thoughts with Mr. Wellings, noting the impact the fees could have on small builders.

She asked that council delay adoption of the bylaw or remove the planning fee section.

Council received the report on the fees for information. A subsequent report will be presented at the December 20 meeting with information on fees in the community, engineering and corporate services departments.

For more information on the proposed user fees, visit www.milton.ca.

Melanie Hennessey can be reached at mhennessey@miltoncanadianchampion.com.