



## Are you connected to your community?

Get all the news from Milton, Oakville, Burlington and surrounding areas quickly and conveniently online and on your schedule.

www.haltonsearch.com **24/7**

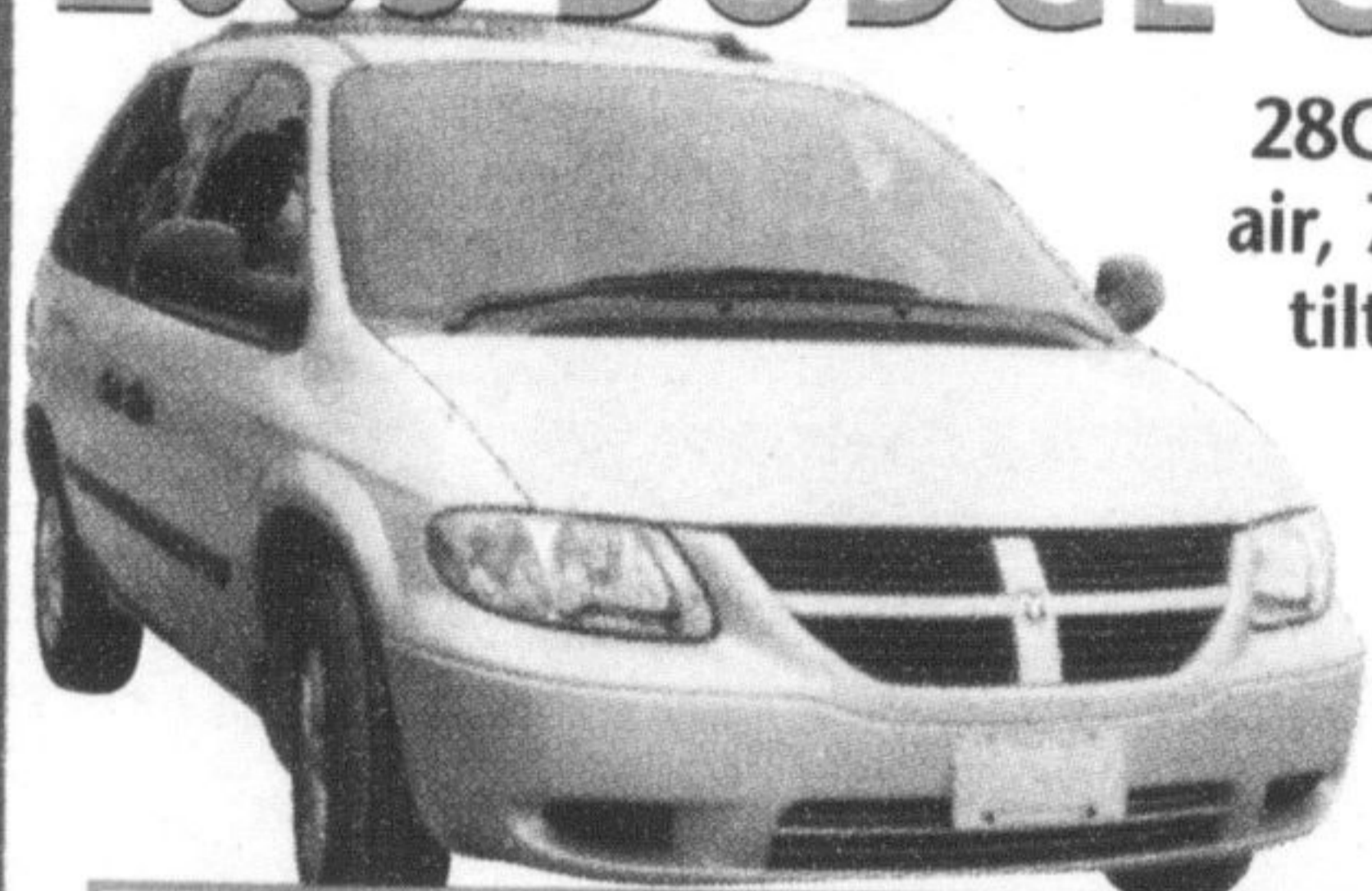
Visit us on the web at [www.miltonchrysler.com](http://www.miltonchrysler.com)



# DODGE RULES!



## 2005 DODGE CARAVAN



28C Pkg - 3.3L V6, auto, air, 7 pass, AM/ FM/ CD, tilt, cruise, P.windows - d.locks, roof rack, 4 door, sunscreen glass, floor mats & much more. Stk# 219114

Zero Down Payment **\$277\*** /month 48 month Gold Key Lease

## 2005 DODGE GRAND CARAVAN



28G Pkg - Stow N' Go seat system, 3.3L V6, auto O/D, air, AM/FM/CD, quadseats, 7 pass, ABS, keyless entry, pw, pl, p. mirrors & rear vent windows, tilt, cruise, deluxe insulation group, premium door panels, roof rack, sunscreen glass & much more. Stk#268626 & 285676

STOW'N/GO Zero Down Payment **\$329\*** /month 48 month Gold Key Lease

## ACTION CLEARANCE SALE ON EVERY REMAINING 2004 VEHICLE

**0%** PURCHASE FINANCING UP TO 60 MONTHS PLUS UP TO **\$2000 OFF** OR **Save The PST & GST** ON ALL OF OUR IN STOCK 2004'S!

EVERY 2004 WINDSHIELD 'BEST PRICE'

## BRAND NEW 2005 DODGE RAM QUAD CAB SLT 4X4



26G-5.7L, Hemi 345HP Auto, CD, 4wheel ABS, Trailer Tow Package, tilt, cruise, power windows, door locks & mirrors. Loaded - Great selection in stock. Stk#121081

YEAH, IT'S GOT A HEMI! Zero Down Payment **\$399\*** /month 39 month Gold Key Lease

## SAVE THOUSANDS OF \$\$ OVER BRAND NEW V.S. OUR LOW KM'S 2004'S

<p>2004 CHRYSLER SEBRING TOURING</p> <p>Stk# 296501 MSRP New \$27,400</p> <p>Call for details. Former Daily Rental.</p> <p>USED PRICE <b>\$15,777</b> BI-WEEKLY <b>\$123</b></p>	<p>2004 CHRYSLER SEBRING TOURING</p> <p>Stk# 329407 MSRP New \$27,400</p> <p>Call for details. Former Daily Rental.</p> <p>USED PRICE <b>\$15,777</b> BI-WEEKLY <b>\$123</b></p>	<p>2004 CHRYSLER INTREPID SE</p> <p>Stk# 665607 MSRP New \$26,400</p> <p>Call for details. Former Daily Rental.</p> <p>USED PRICE <b>\$15,777</b> BI-WEEKLY <b>\$123</b></p>	<p>2004 CHRYSLER INTREPID SXT</p> <p>Stk# 29800 MSRP New \$29,800</p> <p>Call for details. Former Daily Rental.</p> <p>USED PRICE <b>\$16,777</b> BI-WEEKLY <b>\$133</b></p>	<p>2004 CHRYSLER INTREPID SXT</p> <p>Stk# 666103 MSRP New \$29,800</p> <p>Call for details. Former Daily Rental.</p> <p>USED PRICE <b>\$16,777</b> BI-WEEKLY <b>\$133</b></p>
<p>2004 CHRYSLER 300M</p> <p>Stk# 668827 MSRP New \$42,000</p> <p>Call for details. Former Daily Rental.</p> <p>USED PRICE <b>\$23,777</b> BI-WEEKLY <b>\$197</b></p>	<p>2004 CHRYSLER 300M</p> <p>Stk# 668843 MSRP New \$42,000</p> <p>Call for details. Former Daily Rental.</p> <p>USED PRICE <b>\$22,777</b> BI-WEEKLY <b>\$187</b></p>	<p>2004 CHRYSLER CONCORDE LXI</p> <p>Stk# 669873 MSRP New \$33,200</p> <p>Call for details. Former Daily Rental.</p> <p>USED PRICE <b>\$19,777</b> BI-WEEKLY <b>\$160</b></p>	<p>2004 JEEP RUBICON</p> <p>Stk# 705816 MSRP New \$35,000</p> <p>Call for details.</p> <p>USED PRICE <b>\$25,777</b> BI-WEEKLY <b>\$215</b></p>	<p>2004 JEEP RUBICON</p> <p>Stk# 710873 MSRP New \$35,000</p> <p>Call for details.</p> <p>USED PRICE <b>\$26,777</b> BI-WEEKLY <b>\$225</b></p>

ALL VEHICLES INCLUDE THE BALANCE OF CHRYSLERS 3/60 BASIC + 7/115 POWERTRAIN WARRANTY

**#1 Rated Chrysler dealer in Ontario in Customer Sales Satisfaction**



Sean Gibson



Joe De Oliveira



James Elwood



Ray Dunbar



Gerry Misak



Anwar Karim



Phil Ciantar

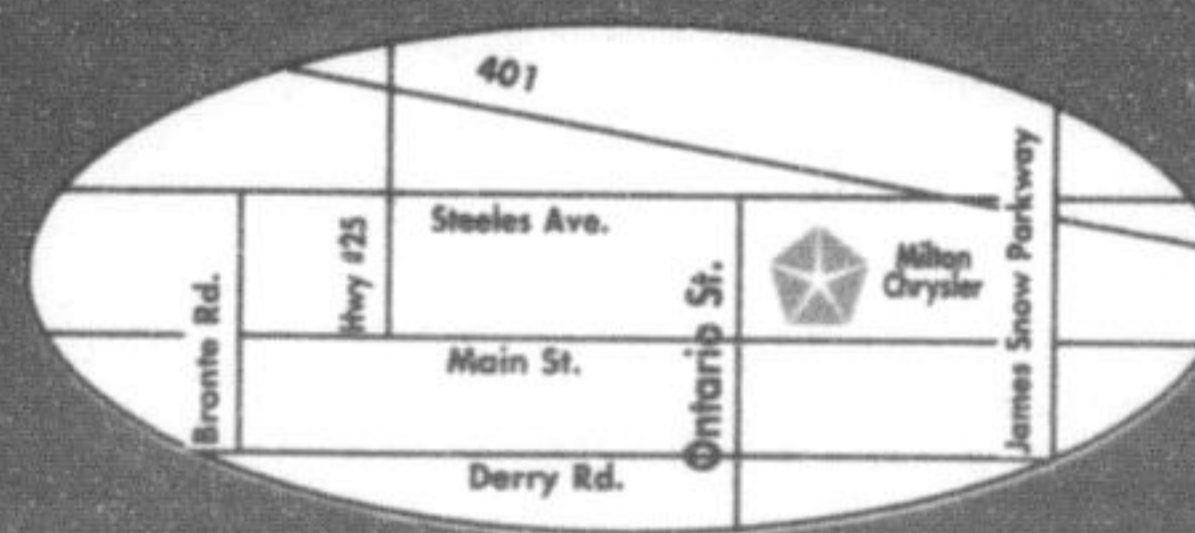


CHRYSLER • DODGE • JEEP

905-878-8877

81 ONTARIO ST. N. MILTON

Visit us at [www.miltonchrysler.com](http://www.miltonchrysler.com)



**1** BLOCK NORTH OF THE MILTON MALL

## Regional budget hard to follow, says Furik

• from HALTON on page 3

Ron Furik said the regional budget "is very difficult to follow."

"We thought we were providing council with the kind of document council wants to see," said Halton CAO Brent Marshall.

Regional and Burlington Councillor Mike Wallace said there's been significant improvements in the budget over the years in terms of its presentability.

Councillors also pointed out items in the budget they feel should be cut.

Mr. Wallace recommended not approving a new business development analyst position at a cost of \$76,887.

"For this budget, I'm not convinced we need this position," he said.

Mr. MacIsaac moved a motion to remove the position, but it lost on a tie.

Regional and Burlington Councillor Jack Dennison said he didn't want to see the Region spend money on more air quality monitoring stations — a recommendation that came out of the strategic plan approved earlier this year.

"It won't change the air quality one iota. I'd rather see the money spent on things that actually improve air quality," he said.

Halton Medical Officer of Health Dr. Bob Nosal said the Region always needs the base data on air quality.

Mr. Wallace said he's also not excited about spending money to acquire land for new ambulance stations in Milton and Oakville and said staff should look at land the Region or Towns own.

"I'd like to see we've done our due diligence," he said.

Ground is expected to break for a new station in south Milton in 2008, with \$200,000 budgeted for land acquisition. In southeast Oakville, construction is anticipated for 2006, with \$300,000 set aside for land.

The budget will come before the budget review committee December 13, and then regional council December 15 for adoption.

Melanie Hennessey can be reached at [mhennessey@miltoncanadianchampion.com](mailto:mhennessey@miltoncanadianchampion.com).

## Situations eye-opening for family

• from MANY on page 9

also offers monthly support meetings for hosts, as well as around-the-clock support whenever a youth is placed.

Ms Dove notes that hosts may either be single people or have families.

"We're really just looking for people who have good intentions and are interested in working with the agency in supporting these kids," she says.

Ms Joseph says it has been eye-opening for her and her family to see the circumstances some of Halton's youth have faced in their young lives.

It has also helped her own kids recognize how truly fortunate they really are to have a supportive, intact family.

"We can all shift this off as being somebody else's problem," she says, "but when you look at it, how can you say 'no'?"

\*Lease payments terms as shown. Due at lease signing, first payment, freight, taxes, admin fee & licence. 20,400 annual km allowance. Excess km charge: 15¢ plus taxes. Optional buyback. O.A.C. #Based on year end 2003 SSI Reports for our dealer group. +Save the PST & GST (Discounts equal to PST & GST) + low finance & lease rates are mutually exclusive and many not be combined. O.A.C. See dealer for details. †All prices plus all taxes and admin fee. ‡Payment based on 7.75% finance rate and 72 mth payments bi-weekly with \$3000 or equal value trade in. O.A.C. See dealer for details.