

Dateline

• from **DATELINE** on page 16
Burlington Art Centre in the AIC Gallery at 2 p.m. with poets presenting their poetry about an exhibit featuring artists B. Amos Murphy and James Paterson. For more information, visit <http://www.federationofpoets.com/burlington.htm>.

Monday Nov. 15

The Milton and District Horticultural Society celebrates its final meeting of the year with a **pot luck dinner** at the Royal Canadian Legion, 21 Charles St.

The Milton Seniors' Activity Centre, 500 Childs Dr., holds its new **Cyber-Café** from 1 to 4 p.m. The cost is \$2 for members and \$4 for non-members. For more information, call (905) 875-1681.

Tuesday Nov. 16

The MS Society of Halton holds its **annual meeting** at 7 p.m. at the Sunrise Senior Centre, 5401 Lakeshore Rd., in Burlington. For more information, call (905) 681-8770 or 1-800-211-8322.

The KHi Community of the Salvation Army, 100 Nipissing Rd., suite 3, holds **Busy Hands, Creative Minds**, a group for busy toddlers and their caregivers with crafts, songs, stories and field trips. It takes place from 9:30 to 11 a.m. Call (289) 242-1432.

Improve communication and leadership skills with the **Milton Toastmasters**. Everyone is welcome to attend the meeting at the Royal Canadian Legion, 21 Charles St. (upper level), at 7:30 p.m. For information, call Allan Lahue at (905) 877-3441.

Help for Parents, a parent support group, meets in Oakville. This non-denominational self-support group helps parents of children who are in trouble at home, at school or with the law or who are abusive or taking drugs. The group is a member of Association of Parent Support Groups in Ontario. For more information, call 1-800-488-5666 or visit www.apsgo.ca.

Calling New Parents, a free program for parents and babies aged 6 months and younger, meets with a public health nurse to discuss parenting and infant care. The group meets at the Ontario Early Years Centre, 917 Nipissing Rd., from 1:30 to 3:30 p.m. For more information, call (905) 825-6000, ext. 7299.

Milton District Hospital holds a **breastfeeding clinic** with a certified lactation consultant from 9:30 to 11:30 a.m. To make an appointment, call Jean Gallen at (905) 878-2383, ext. 7030.

St. John Ambulance meets from 7 to 9 p.m. at the community centre in Norval. New volunteers

are welcome. For more information, call (905) 877-7658.

TOPS (Take Off Pounds Sensibly) meets at 6:15 p.m. at the Milton Seniors' Activity Centre, 500 Childs Dr. This is a non-profit, non-commercial weight-loss support group that provides motivation, support and friendship. A minimal charge applies. For more information, call Nancy Nowak at (905) 878-4025 or visit www.tops.org.

The Women's Centre, 210-1515 Rebecca St. in Oakville, holds its **Social Group for Spanish Speaking Women** from 12:30 to 2:30 p.m. To register or for more information, call (905) 847-5520.

Wellspring Halton-Peel, a support network for cancer patients and their families, holds **gentle yoga** from 1:30 to 3 p.m. at 2545 Sixth Line in Oakville. For more information, call (905) 257-1988.

The Milton Seniors' Activity Centre, 500 Childs Dr., holds its **Evening Euchre Party** at 7:30 p.m. The cost is \$2.50. It also holds **Intermediate Line Dancing** at 7 p.m. The cost is \$3.50 for members and \$5.50 for non-members. Its **Downsizers Weight Loss Club** takes place at 10 a.m. The cost is \$2 for members and \$4 for non-members. For more information on these activities, call (905) 875-1681.

OPEN 7 DAYS A WEEK

Fine Oak

QUALITY OAK, PINE AND MAPLE FURNITURE



Things

OF CAMPBELLVILLE

STORE HOURS 10am-5pm

Est. 1989

SOUTHERN ONTARIO IS COMING HOME TO FINE OAK THINGS




FEATURED:

New Mission Pine bedroom in distressed look.

Also bedrooms in Maple & Oak.

Several stains to choose from.

Quick delivery.

Oak, Pine & Maple Furniture still in time for Christmas

Come see our bedroom gallery including our new shaker style solid pine.

VISA

MasterCard

SOUTH OF 401 AT GUELPH LINE, CAMPBELLVILLE (905) 854-0649

www.fineoakthings.com



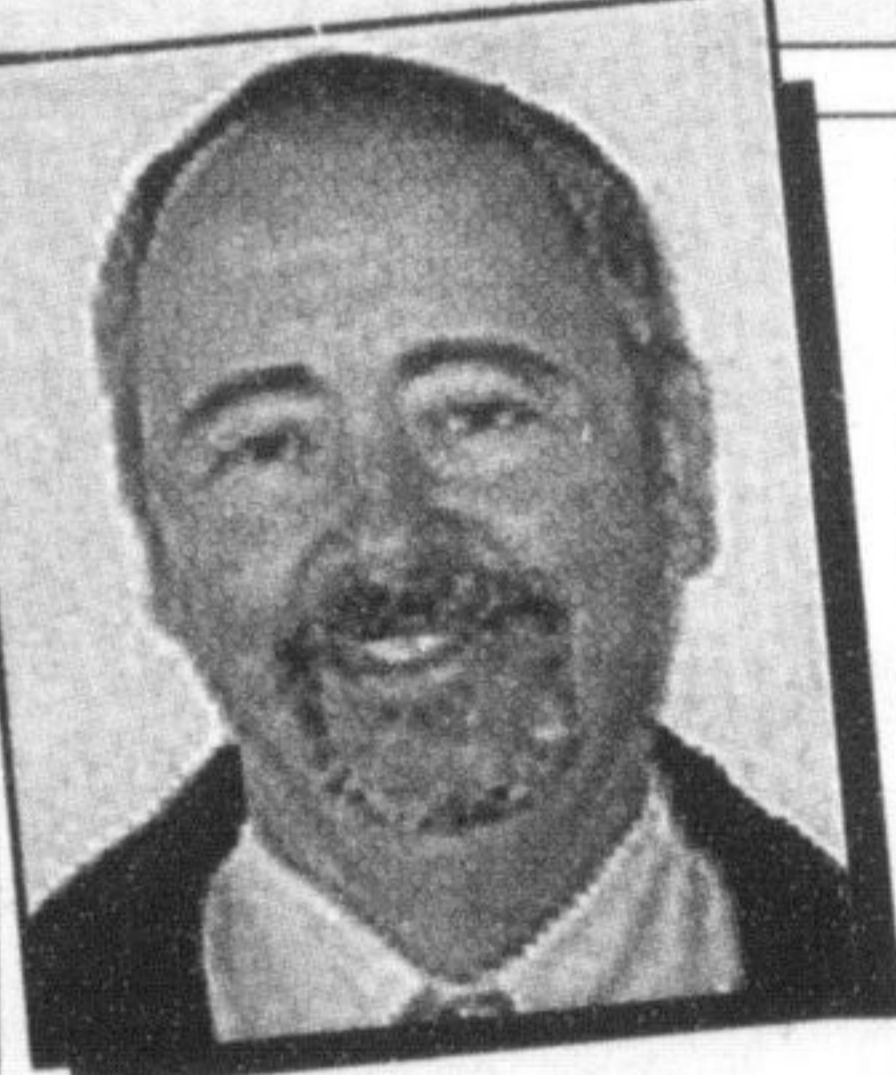

100% AMISH MADE SOLID OAK FURNITURE

Visit Our Over 6,000 Sq. Ft. Showroom • Areas Largest Selection of Oak Buffets, Hutches, China Cabinets, Bookcases & Accessories

HaltonSearch.com

GALLINGER PRE-OWNED

We Make It Af. *Ford* able



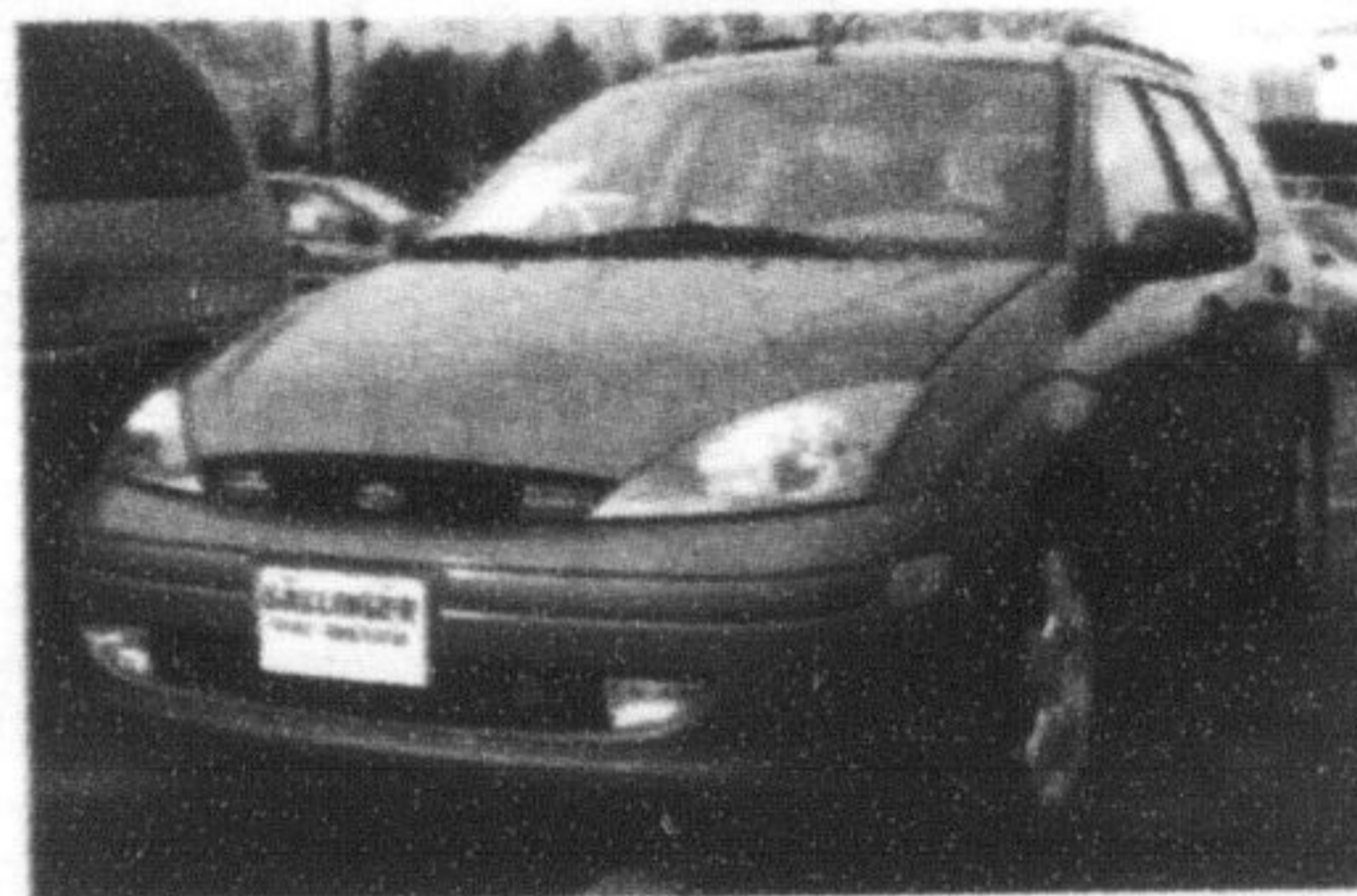
Robert "Rob" Farrant has been living in Milton for over 23 years and has worked here for over 8 years as a sales and leasing consultant. His hobbies include motorcycling, golf and curling. Come on in and see Rob and he will be more than helpful on your next vehicle purchase.

ROB'S PICK OF THE WEEK...

2004 FORD FOCUS ZTW

Auto
Pwr conv. grp.
Moonroof
Leather, loaded
Balance of factory warranty
Under 14,000 km
Stk#2319A

\$18,950



Check out our new car showing next week. Nov. 17 - 20th. Featuring the NEW Ford "500", Ford "Freestyle" and the new "Mustang."

*Plus applicable taxes and admin fee.

GALLINGER

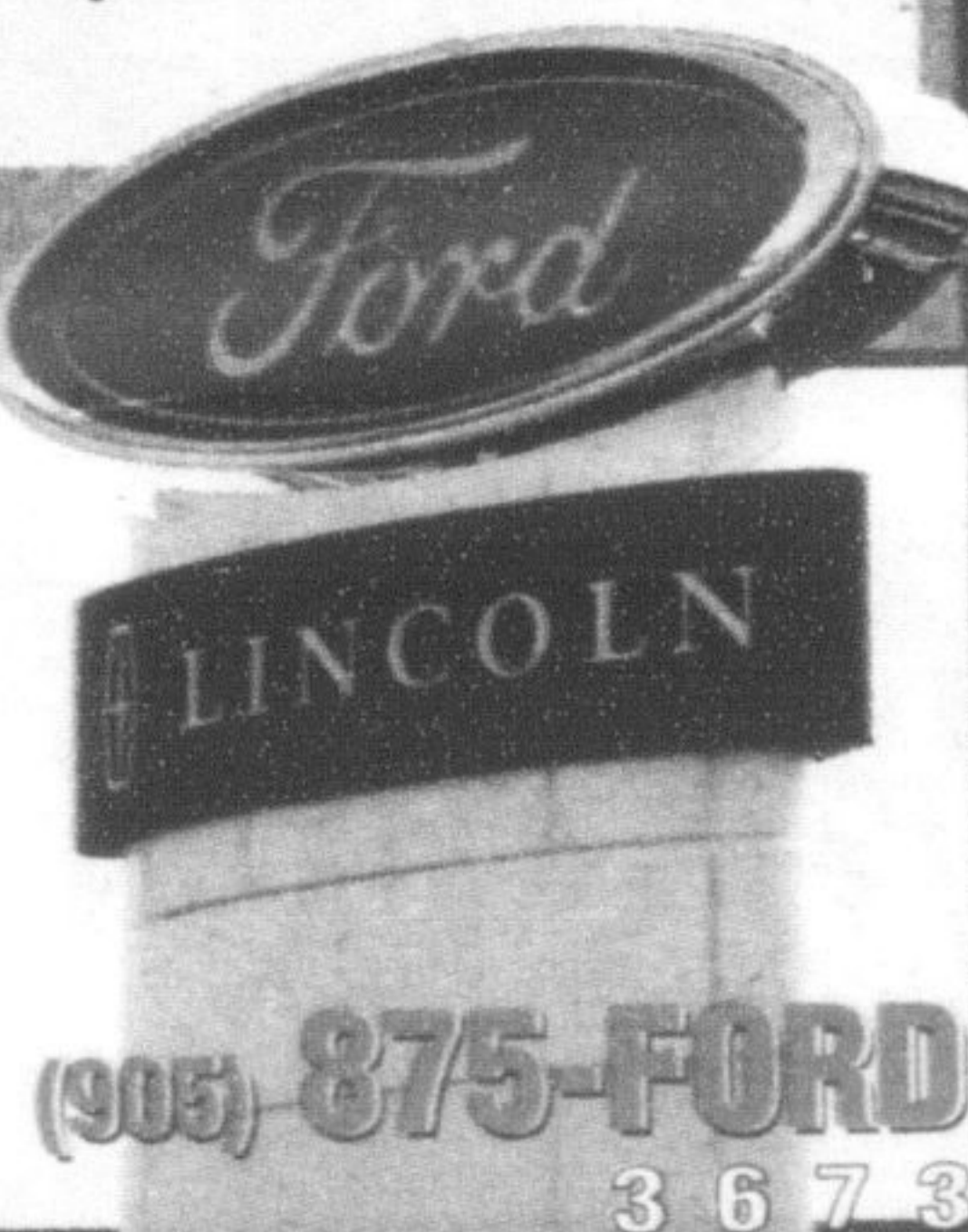
FORD LINCOLN

655 MAIN STREET EAST, MILTON

www.gallingerford.com

A Tradition of Value & Trust since 1967

SALES • LEASING • SERVICE • PARTS • COLLISION CENTRE



IMPROVE THE VIEW



TORWIN

WINDOWS & DOORS

PRESENTS:

- HunterDouglas Blinds
- Torwin Blinds
- Shad-O-Matic Shutters
- Drapery and Upholstery
- Colour Consultation

Fabrics by Maxwell • Kravets • Robert Allen
Alendel • Joanne Fabrics • Equis

Our design consultants will be happy to help you with your decorating project.

Take advantage of our fabulous specials.
Book your appointment today.

Telephone: 905-338-3453

25-60%
OFF!